



YOKO TECHNOLOGY CORP.

# COMPANY OVERVIEW



YOKO TECHNOLOGY CORP.

# YOKO Company Presentation

By Nacho Lee  
Account Manager

\*\*\*\*\*

YOKO Technology Corp  
No.199, Lide St., Jhonghe City, Taipei County 235,  
Taiwan, R.O.C.

Tel: 886 2 8228 6161 # 723

Fax: 886 2 8228 6880

<http://www.yoko-tech.com>

Email: [nacho@yoko-tech.com](mailto:nacho@yoko-tech.com)

\*\*\*\*\*



YOKO TECHNOLOGY CORP.

- **Company Introduction**
- **Product Developing Procedure**
- **Factory Introduction**
- **Quality Control Management**
- **Product Introduction & Roadmap**

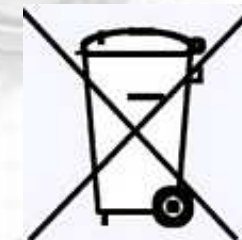
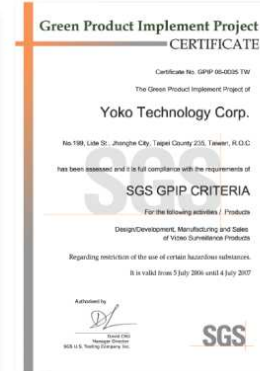


# Company Introduction



YOKO TECHNOLOGY CORP.

- Establishment: 1992
- Capital: US\$ 32 Million
- Public Listed Company: in 2004
- Employees (Headquarter) : 300 (RD:70, PD:60)
- 2009 Sales Turnover: US\$ 63 Million  
**(US\$ 70 Million 2010 Estimation)**
- No. 24 / Top Security 50 2008  
No. 31 / Top Security 50 2009
- ISO-9001: 2000 certification from TUV in 2002
- Major Product Line:  
**CCTV Camera**  
**DVR**  
**PSR (Portable Security Recorder)**  
**IP Surveillance TTL Solution**



**ISO-9001: 2000 certification from TUV in 2002**



09'	08'	Company	Headquarters	Product Group	Total Revenue (\$US Millions)		Revenue Growth
					2008	2007	2007-2008
1	2	ADT SECURITY	U.S.	Multiple	\$2,821.0	\$2,734.0	3.2%
2	3	BOSCH SECURITY SYSTEMS	Germany	Multiple	\$2,062.7	\$2,026.2	1.8%
3	5	FLIR SYSTEMS	U.S.	Video Surveillance	\$1,077.0	\$779.4	38.2%
4	7	VICTOR COMPANY OF JAPAN (JVC)	Japan	Video Surveillance	\$709.7	\$696.6	1.9%
5	4	ASSA ABLOY (GLOBAL TECHNOLOGIES)	Sweden	Access Control	\$694.2	\$699.6	-0.8%
6	6	TAMRON	Japan	Video Surveillance	\$680.7	\$742.4	-8.3%
7	8	L-1 IDENTITY SOLUTIONS	U.S.	Biometrics	\$562.9	\$389.5	44.5%
8	9	AIPHONE	Japan	Access Control	\$387.9	\$452.8	-14.4%
9	10	POSDATA	Korea	Video Surveillance	\$308.8	\$298.7	3.4%
10	11	AXIS COMMUNICATIONS	Sweden	Video Surveillance	\$267.9	\$217.5	23.2%
11	New	RCG	Hong Kong, China	Biometrics	\$258.4	\$185.6	39.2%
12	13	HIKVISION DIGITAL TECHNOLOGY	China	Video Surveillance	\$255.1	\$173.4	47.1%
13	12	NEDAP	Netherlands	Multiple	\$208.3	\$212.4	-2.0%
14	17	NICE SYSTEMS	Israel	Video Surveillance	\$148.6	\$122.9	20.9%
15	14	HITRON SYSTEMS	Korea	Video Surveillance	\$132.0	\$121.2	8.9%
16	16	AVTECH	Taiwan	Video Surveillance	\$125.8	\$131.5	-4.3%
17	18	COGENT SYSTEMS	U.S.	Biometrics	\$125.7	\$105.8	18.8%
18	21	MARCH NETWORKS	Canada	Video Surveillance	\$93.6	\$87.3	7.2%
19	32	DAHUA TECHNOLOGY	China	Video Surveillance	\$92.5	\$59.3	55.9%
20	19	EVERFOCUS ELECTRONICS	Taiwan	Video Surveillance	\$86.4	\$100.3	-13.9%
21	29	CNB TECHNOLOGY	Korea	Video Surveillance	\$85.9	\$61.3	40.1%
22	26	VISONIC	Israel	Intrusion Detection	\$84.9	\$74.4	14.2%
23	20	FERMAX	Spain	Access Control	\$80.2	\$85.9	-6.6%
24	22	CHINA SECURITY & SURVEILLANCE TECHNOLOGY (CSST)	China	Multiple	\$78.6	\$80.9	-2.9%
25	23	COMMAX	Korea	Video Surveillance	\$77.9	\$68.0	14.6%
26	27	MAGAL SECURITY SYSTEMS	Israel	Multiple	\$70.4	\$72.4	-2.8%
27	New	NAPCO SECURITY SYSTEMS	U.S.	Multiple	\$68.4	\$66.2	3.3%
28	28	VICON	U.S.	Video Surveillance	\$66.9	\$69.1	-3.1%
29	25	IDIS	Korea	Video Surveillance	\$66.4	\$63.8	4.0%
30	34	GEUTEBRÜCK	Germany	Video Surveillance	\$61.3	\$53.3	15.0%
31	24	YOKO TECHNOLOGY	Taiwan	Video Surveillance	\$60.2	\$73.8	-18.4%



CHNOLOGY CORP.

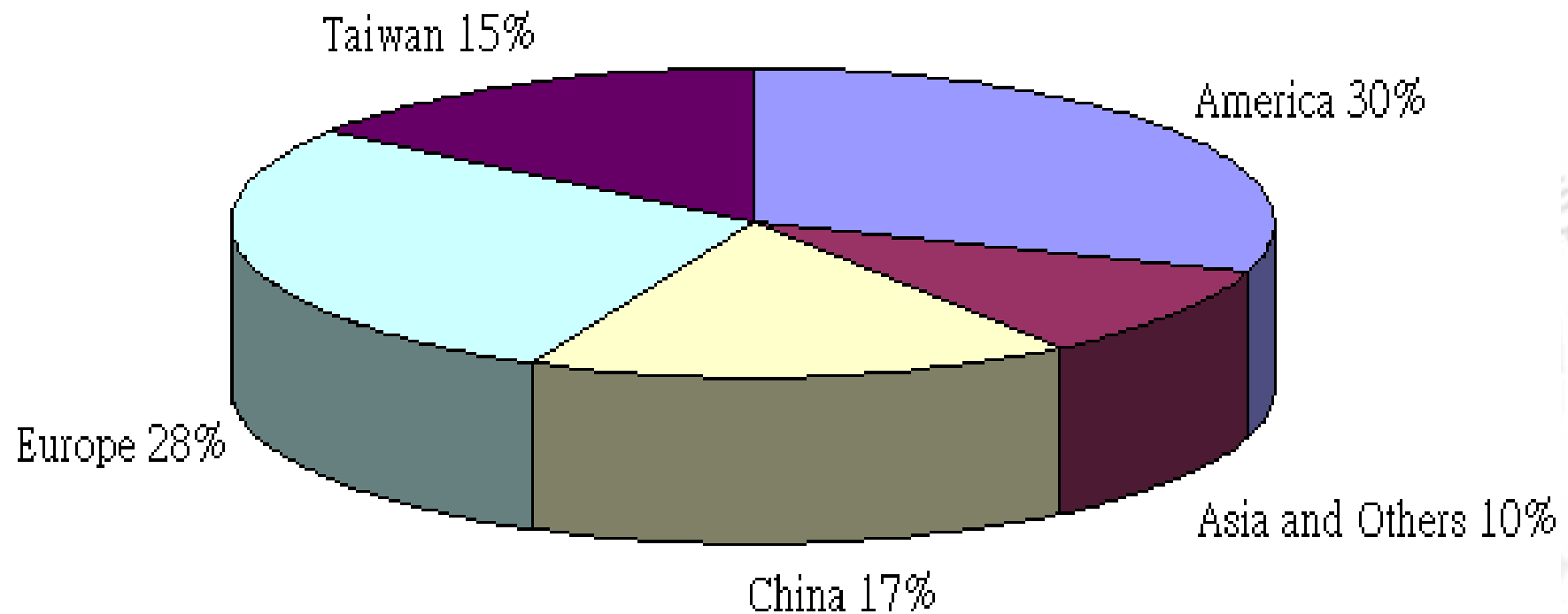


# Company Introduction



YOKO TECHNOLOGY CORP.

## Revenue Allocation by Territory in 2009

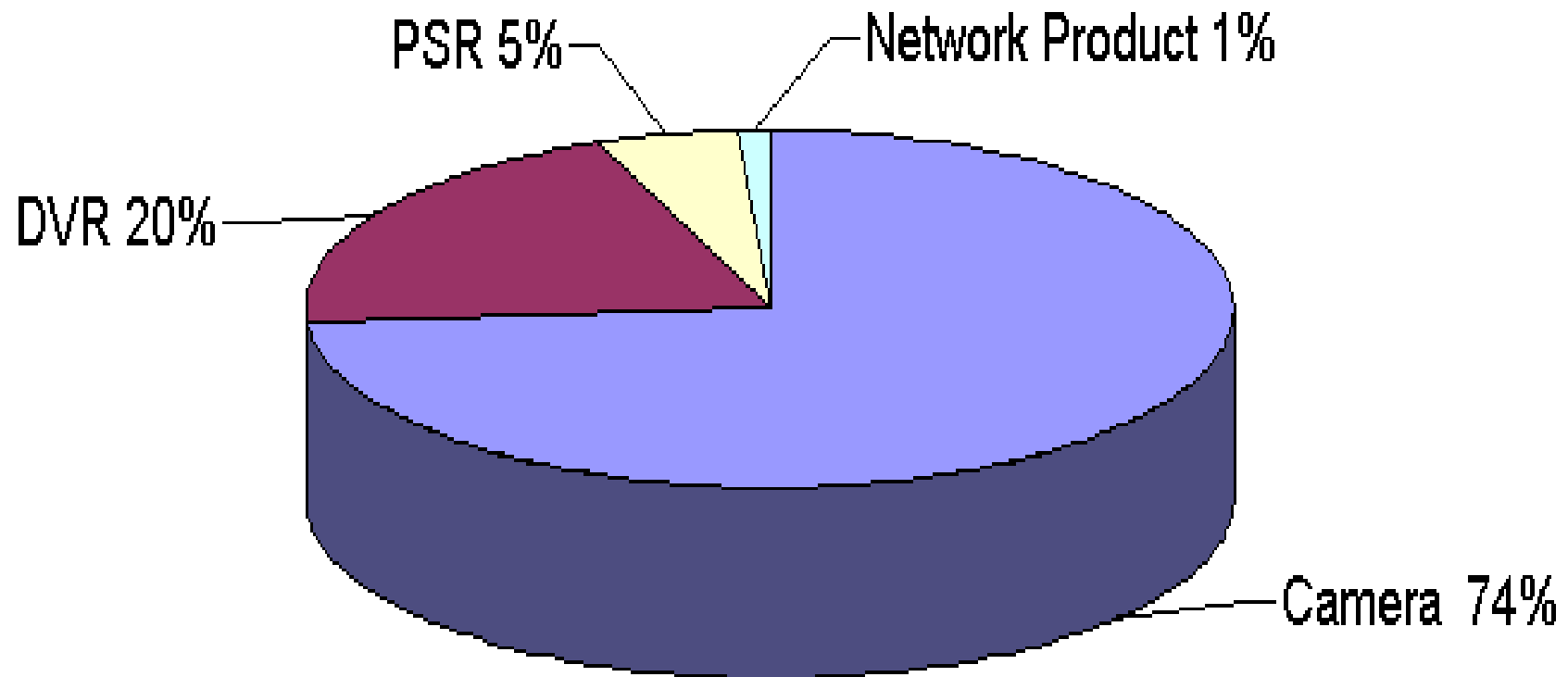


# Company Introduction



YOKO TECHNOLOGY CORP.

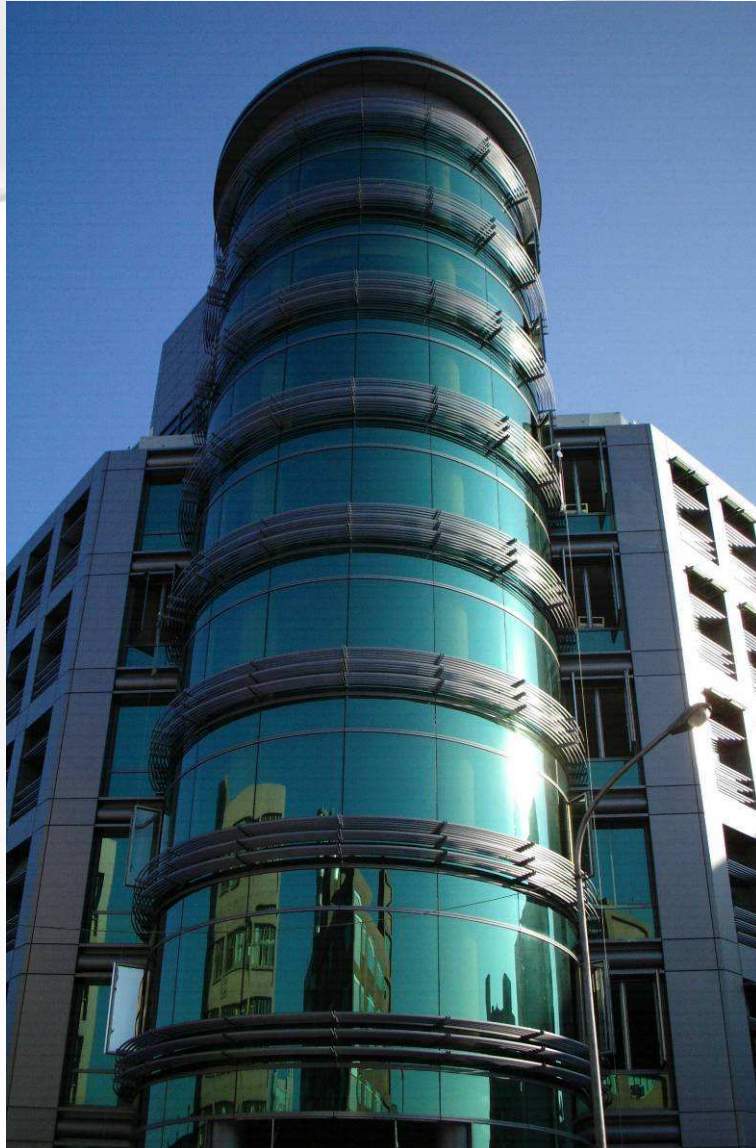
## Revenue Allocation by Product in 2009



# YOKO Headquarter



YOKO TECHNOLOGY CORP.



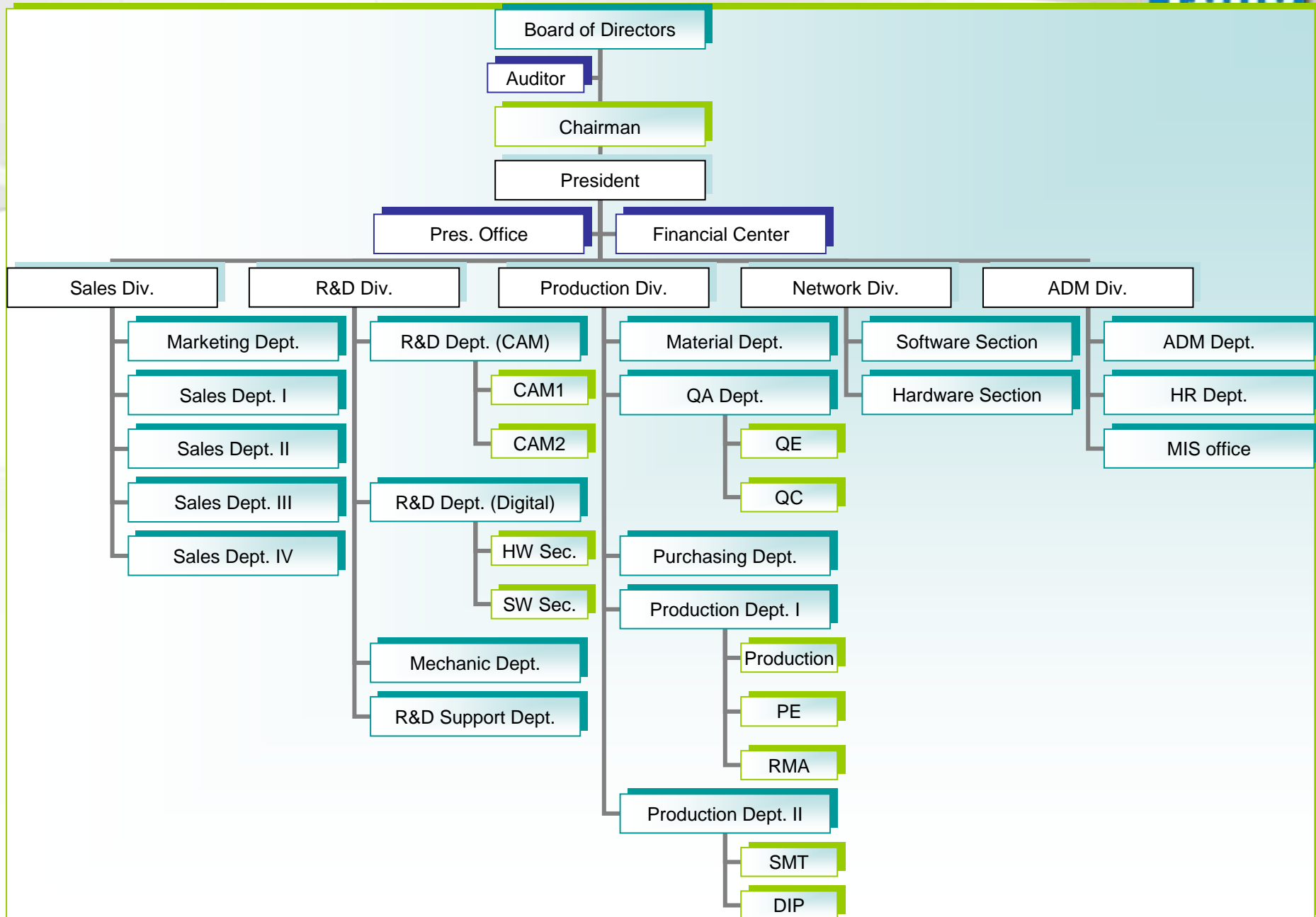
## ◆ 2005 Sep. Move to New Enterprise Building

Headquarter relocated to No.199, Lide St.,  
Jhonghe City, Taipei Country.

- 49,812 square feet
- 8 floors & 3 basements
- Sales Dept./ RD Dept./ QC Dept./  
Production Line/ Warehouse



# Organization Structure



# Company Introduction



YOKO TECHNOLOGY CORP.

## Core Competence - Camera

- The biggest manufacturer of CCTV Camera in Asia
- Sufficient Supply; No shortage concern
- Diversity & Innovation
- Elastic Production Mechanism
- Full range of product :  
Speed Dome Camera, Auto Focus Zoom Camera,  
Box Camera, IR Camera, Dome Camera, Board Camera
- High quality at very competitive price
- OEM & ODM Experience
- **Production Capacity: 150K pcs monthly (500 pcs PTZ)**

# Company Introduction



YOKO TECHNOLOGY CORP.

## Core Competence - DVR

- **Full Product Lines & Diversity**
  - **4/8/16ch, same platform**
  - **H.264 / MJPEG**
  - **Multiplex, Triplex, Simplex**
  - **Standalone DVR**
- **High stability & reliability**
- **User-friendly operation**
- **Multi-language OSD version**
- **Competitive price to win more market share**
- **Production Capacity: 20K pcs monthly (7K~8K current)**

# Company Introduction



YOKO TECHNOLOGY CORP.

## Core Competence – IP Surveillance

- Total Solution Provider
- Offering and taking different types of video inputs
  - IP Camera
  - Analog Camera + Video Server
  - Analog Camera + DVR
  - Others...
- SecuCon CMS to centralize monitoring and control
- NVR storage for recording, backup and IVS
- SDK available to any projects and tenders



# Company Introduction



YOKO TECHNOLOGY CORP.

## **YOKO, Your Right Choice !**

- **To provide low cost and value-added products.**
- **Strong R&D team to provide the full range of CCTV products.**
- **The best solution for your “one-stop shopping” source.**
- **Strong Relationships with sensor and chipset vendors.**
- **Dedicated Project Team to coordinate with customers closely.**

*We Design & Make What's on Your Mind*



# YOKO Awards



YOKO TECHNOLOGY CORP.

## ◆2003

**WORLD'S TOP 50 SECURITY COMPANIES** (by A&S Magazine)

## ◆2004

Taiwan's **TOP 50 HIGH ROE MANUFACTURERS** (by Commonwealth magazine)

Taiwan's **TOP 1000 MANUFACTURERS** (by Commonwealth magazine)

Taiwan's **TOP 50 HIGH ROA MANUFACTURERS** (by Commonwealth magazine)

## ◆2005

YOKO SecuMate Portable Security Recorder "**BEST NEW COMMUNICATION PRODUCT**" (2005 IFSEC Security Industry innovation Awards)

## ◆2006

**No. 6 of the DVR and No. 5 of the camera brand** ranking (of the "Taiwan security and surveillance top 10 DVR and Camera brands")

Ranked **No.32 of Top Security 50** (by A&S Magazine)

## ◆2007

Ranked **No.28 of Top Security 50** (by A&S Magazine)

## ◆2008

Ranked **No.24 of Top Security 50** (by A&S Magazine)

# Factory Introduction



YOKO TECHNOLOGY CORP.

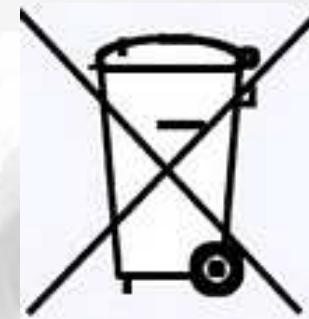
## ◆ **Factory Operation**

- ✓ ***4 Production Lines***
- ✓ ***2 SMT Lines***
- ✓ ***1 DIP Line***



## ◆ **Monthly Production Capacity**

- ✓ ***150K cameras***
- ✓ ***20K DVRs***



# Factory Introduction

**-SMT-**



YOKO TECHNOLOGY CORP.



**PCB  
Loader**

**Solder  
Printing**

**High-Speed  
Mounter**

**Multi-Fun.  
Mounter**

**Solder  
Reflow**

**Visual  
Inspection**



# Factory Introduction



YOKO TECHNOLOGY CORP.

**-DIP-**



**Manual Insertion**



**Visual Inspection**



**Wave Soldering**



**Pre-Test (Boot up)**



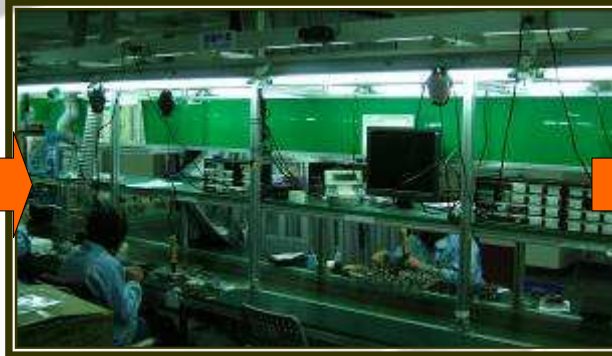
**Inspection & Touch up**

# Factory Introduction

## -Assembly-



YOKO TECHNOLOGY CORP.



**Hand Soldering**

**Sub-Assembly**

**Pre-Test**



**Packing**

**Final-Test**

**Final-Assembly**

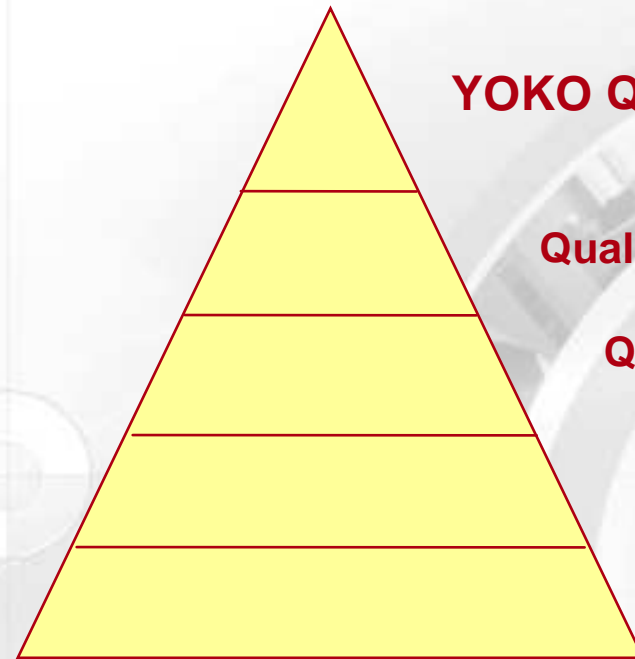


# Quality Management System



YOKO TECHNOLOGY CORP.

## ISO 9001



**YOKO Quality Policy**

**Quality Manual**

**Quality Procedure**

**Working Instruction**

**Quality Record**

- . July. 1997 ISO 9002 Certificate From TUV
- . July. 1999 ISO 9002 Certificate From TUV
- . July. 2002 ISO 9001:2000 Certificate From TUV
- . July. 2005 ISO 9001:2000 Certificate From TUV
- . July. 2008 ISO 9001:2000 Certificate From TUV

# Quality Control Management Certification



YOKO TECHNOLOGY CORP.



**CERTIFICATE**  
The Certification Body of TÜV Rheinland Group

certifies, in accordance with the TÜV Rheinland Group procedures, that the Company

**Yoko Technology Corp.**  
No. 199, Lide St., Jhonghe City, Taipei County 235, Taiwan

has established and applies a quality management system  
for the following scope :

**Design/Development, Manufacturing and Sales of Video Surveillance Products**

Through an Audit, Report No. 029185, proof has been furnished  
that the requirements according to the standard  
**ISO 9001:2000**  
are fulfilled.

The certificate is valid from 2008-06-01  
The certificate is valid until 2011-07-31  
Certificate Registration No. 01 100 822 029185




QMS 010 Quality Management QC610



TÜV Rheinland Taiwan Ltd.  
7F, No. 2, Sec. 3, Min Chuan E. Rd.,  
Taipei 104, Taiwan



www.tuv.com



**CERTIFICATE**

The TÜV CERT Certification Body  
of TÜV Industrie Service GmbH, TÜV Rheinland Group  
certifies in accordance with TÜV CERT procedures that:

**Yoko Technology Corp.**  
6F, 8-10F, No. 10, Lane 16, Sec 2, Sze Chuan Rd.,  
Pan-Chiao City, Taipei Hsien 220, Taiwan

has established and applies a quality management system for the scope of

**Design/Development, Manufacturing and Sales of Video Surveillance Products**

An audit was performed, Report No. 029185.  
Proof has been furnished that the requirements are fulfilled according to the standard

**DIN EN ISO 9001:2000**

The certificate is valid until 2008-07-31.  
Certificate Registration No. 01 100 029185





**Green Product Implement Project CERTIFICATE**

Certificate No. GPPI 05-0005 TW

The Green Product Implement Project of

**Yoko Technology Corp.**

No.199, Lide St., Jhonghe City, Taipei County 235, Taiwan, R.O.C

has been assessed and it is full compliance with the requirements of

**SGS GPIIP CRITERIA**

For the following activities / Products

Design/Development, Manufacturing and Sales  
of Video Surveillance Products

Regarding restriction of the use of certain hazardous substances.

It is valid from 5 July 2006 until 4 July 2007

Authorized by



David CNG  
Manager Director  
SGS U.S. Testing Company Inc.





# Product Introduction



YOKO TECHNOLOGY CORP.

- **CCTV Camera**
- **DVR (Standalone)**
- **Portable products (PSR/Capture Camera)**
- **IP Surveillance Solution**
- **Accessories (Lens/Housing/Bracket)**

# Product Introduction

## Camera Roadmap

Current

Q3 '09

Q4'09

	Current	Q3 '09	Q4'09
Speed Dome	<b>22x &amp; 35x (Sony + Hitachi)</b> Indoor -RYK-*E** Outdoor -RYK-*E**A (wall mount) -RYK-*E**B (Pendant mount)		Effio (WD) RYK-S413, 414 ▲
	<b>22x &amp; 35x (Sony + Hitachi)</b> Module -RYK-AF*** Box CAM -RYK-AF***A		Effio (WD) RYK-S411, 412 ▲
Box Cam Dome Cam IR Cam Hidden Cam	<b>Box Cam (SS3, HQ1, SS11X, SS11R, Sharp)</b> Standard -RYK-*X** ( X = 2, 5, 6, 7, C, G, J) Middle -RYK-*X** ( X = 1, 3, 8, 9) Hi-End -RYK-CA01DR, RYK-CA05DR	SS3 (WD) RYK-CA01DR ▲	Effio (WD) RYK-S401 ▲
	<b>Dome Cam (HQ1, SS11X, SS11R, Sharp)</b> BL type -RYK-*X** ( X = 3, 4, 9, G, J, N, T, Y) VF type -RYK-*X** ( X = 4, G, K, H, S) IR type -RYK-*X** ( X = G, K, H, S, Y)		Effio (WD) RYK-S402, 403 ▲
	<b>IR Cam (HQ1, SS11X, SS11R, Sharp)</b> ≤10M -RYK-*X** ( X = A, B) 20~30M -RYK-*X** ( X = L, Q, R, U) >30M -RYK-*X** ( X = F, V, W)	RYK-*B**/1 ▲	Effio (WD) RYK-S404 ▲
	<b>Hidden Cam (SS11X, SS11R, Sharp)</b> Mini type -RYK-*X** ( X = 1, 8, D) Bullet type -RYK-*X** ( X = 7) Others -RYK-*X** ( X = 5, 6)		
Board Cam	<b>22x26mm, 32x32mm (HQ1, SS11X, SS11R, Sharp)</b> Color (470 & 550 TVL) -RYK-2079, 2085, 2083 Color (380TVL) -RYK-2047, 2049, 2069, 2071 BW (420 & 600 TVL) -RYK-3041, 3043, 3063		

■ : Under Develop   ■ : MP   ▲ : MP schedule for new product

# Product Introduction

Chipset Roadmap

Current

Q4 '09

2010

	Current	Q4 '09	2010
High-End	<p><b>Sony CCD + Hitachi DSP</b> -1/4" Hi-Res. CCD -330 &amp; 470TVL -AF 22X &amp; 35X <span>Super HAD II</span></p> <p><b>SS-3WD</b> -550TVL -WDR, DSS, MASK</p>	<p><b>Effio</b> <span>Super HAD II</span> -650TVL -WDR, DNR, DSS, MASK - AF (Optional)</p>	<p><b>Effio-P</b> -650TVL - <math>\gamma</math> WD, DNR -HLC, DIS, Gamma...</p> <p><b>Effio-S</b> <span>Super HAD II</span> -650TVL - <math>\gamma</math> WD, DNR(2D&amp;3D)</p>
	<p><b>HQ1</b> <span>Super HAD II</span> -Hi-Res., 550TVL -FLK, MASK</p> <p><b>Sharp CCD + NEXT DSP</b> -Hi-Sen., 540TVL -FLK, Mirror, OSD, Mask</p> <p><b>SS11X</b> <span>Super HAD II</span> -Hi-Res., 470TVL</p>		<p><b>Effio-E</b> <span>Super HAD II</span> -650TVL - <math>\gamma</math> WD, DNR(2D)</p>
Economic	<p><b>SS11R</b> <span>Super HAD II</span> -380TVL</p> <p><b>SONY CCD + NEXT DSP</b> -420TVL</p>		

# Product Introduction



YOKO TECHNOLOGY CORP.

## DVR Roadmap

	Current	Q3 '09	Q4'09
<b>H.264</b>	<b>16CH</b> RYK-9256 480/240	RYK-9226 480/240	RYK-9236 480/480
	<b>8CH</b> RYK-9258 240/240	RYK-9228 240/240	
	<b>4CH</b> RYK-9254 120/120 (@HD1)    RYK-9220 120/120	RYK-9224 120/120	
<b>MJPEG</b>	<b>4CH</b> RYK-9822(N) 120/60    RYK-9823 120/60 (LAN)	RYK-9824 120/60	

  : Under Develop   
 ▲ : MP   
 NUBMER: LIVE / REC (NTSC)



# Product Introduction



YOKO TECHNOLOGY CORP.

## CCD Camera - Box Camera



WDR Camera



1/2" Hi-Sens. OSD Camera



Auto Focus Zoom Camera



35x/ 22x (ICR) Auto Focus Zoom Module



22x Auto Focus Zoom Module



Vari-Focal IR Camera

# Product Introduction



YOKO TECHNOLOGY CORP.

## CCD Camera - IR Camera



20M IR Camera



Vari-Focal IR Camera



IR Camera



20M/30M IR  
Camera



50M IR Camera



Dual CCD IR Camera

# Product Introduction



YOKO TECHNOLOGY CORP.

## CCD Camera - Hidden Camera



**Smoke Detector Camera**



**Bullet Camera**



**PIR Camera**



**Mini Camera**



**Mini Dome Camera**

# Product Introduction



YOKO TECHNOLOGY CORP.

## CCD Camera - Dome Camera



Outdoor Speed Dome Camera



Indoor Speed Dome Camera



Accessories : Bracket



Control Keyboard



# Product Introduction



YOKO TECHNOLOGY CORP.

## CCD Camera - Dome Camera



Mini Dome Camera



Mini Dome Camera  
Vandal Proof



20M IR Dome Camera



Space Dome  
Camera



IR Dome  
Camera



IR Vandal-proof  
Dome Camera



IR Vandal-proof  
Dome Camera

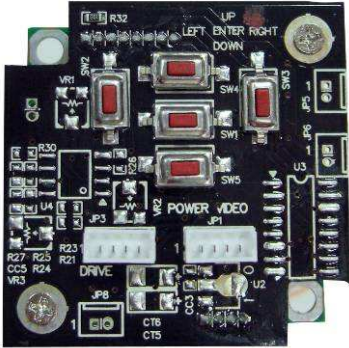








# Product Introduction



YOKO TECHNOLOGY CORP.

## CCD Camera - Board Camera

	 <p>• 22x26mm</p>	 <p>• 32x32mm</p>	 <p>• 32x32mm (Double Boards)</p>
<p><b>OSD Camera</b></p>	<p><b>Color Board Camera</b> <b>B/W Board Camera</b></p>		
<ul style="list-style-type: none"> <li>■ Hi-Sens. CCD</li> <li>■ OSD</li> <li>■ AES/AI</li> <li>■ Vari-Focal</li> </ul>	<p>■ 22x26mm</p>  <p>• Board Lens (2.5x3.6/4/8/12mm)</p>	<p>■ 32x32mm</p>  <p>• Pinhole Lens (5.5/3.7mm)</p>	<p>■ 32x32mm</p>  <p>• Cone Lens (3.7mm)</p>