

2023 H2 EN

PRODUCT BROCHURE

IP Surveillance Solutions



VIVOTEK

A Delta Group Company

Corporate

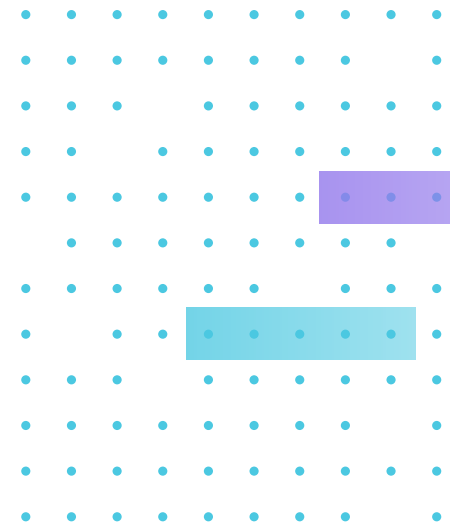
Making Society's Most Trusted Intelligent Surveillance Systems.

VIVOTEK

A Delta Group Company

As one of the world's most trusted IP surveillance solutions provider, we deliver intelligent security, control, and management for a safer society.

Founded in Taiwan in 2000, we are widely recognized for our expansive technical capabilities in imaging and audio, specializing in IP cameras, video management software, and edge based AI video analytics. In 2017, we joined the Delta Group, a global leader in power and thermal management solutions, to serve as the security and intelligence core of Delta Building Automation Business.



Global Presence

Via a global network of more than 200 distributors in more than 100 countries, we serve system integrators building intelligent solutions for end-users around the world. VIVOTEK Inc. (TAIEX: 3454) was listed on the TWSE in 2011, and we have established offices in the U.S., Netherlands, India, Mexico, and Japan.

We Get The Picture

With more than 20 years at the forefront of the industry, we've driven breakthroughs in R&D, and built a solid technological foundation for the industry. It's based on these two decades of experience that we have the expertise to know what keeps business owners and security operators up at night.

Smarter Is Safer

Our AI-powered video analytics deliver improved overviews and real-time insights, giving security operators the information they need, when they need it, to ensure safe and secure operations. With intelligent technologies integrated into our surveillance solutions, users have the peace of mind that their sensitive information is secured against prying eyes.

Trusted Quality

Choosing VIVOTEK means choosing quality you can trust. We develop, test, and manufacture our industry leading products, technologies, and solutions in-house, meeting the highest international standards and regulations for quality management and environmental responsibility.

Seamless Integration, Meaningful Connection

The most robust and effective solutions for keeping people, assets, and data safe require many varied technologies to work seamlessly together. Our innovative surveillance solutions unlock new possibilities for a wide range of vertical applications, leveraging our two decades of industry expertise and global strategic partnerships.



Contents

Advanced Technology

Smart Stream III	5
SNV II	5
Smart IR III	6
Smart IR II.....	6
Camera Link	6

Installation Aids

Modular Mechanical Design	7
Wi-Fi Installation	8

Security within Security

Security at the Edge	9
Cybersecurity Management Solution	10
Multi-Layered Protection for Surveillance Cameras	11

AI-Based Analytics

Smart Motion Detection	13
Smart VCA.....	13
Smart Tracking Advanced.....	14
Parking Violation Detection	14
Restricted Zone Detection.....	14

Deep Search

Attribute Search.....	16
Scene Search.....	16
Re-Search.....	16

Network Cameras

Naming Rule.....	18
------------------	----

SUPREME Series

4K Cameras	21
2MP Cameras	23
360° Fisheye Cameras.....	25
Multi-Sensor Cameras	27

VERSATILE Series

5MP 87-A-Series Cameras	31
5MP 89-v2-Series Cameras	33
2MP Cameras	35
Box Cameras.....	37
Speed Dome Cameras.....	39
Specialty Cameras	41

COMPETITIVE Series

Standard Cameras.....	45
Panoramic Cameras	49

Application Specific Solutions

Thermal Bullet Cameras	53
Correctional Facilities	55
Counting Solution	57
Facial Recognition.....	59
Network Audio.....	69
Media Converters	71

Network Video Recorders

Naming Rule.....	74
Core+ AI	75
Desktop NVR.....	77
Rack Mount NVR	79

PoE Network Products

Commercial Series.....	83
Industrial Series.....	85
Long Range Solution.....	86
Outdoor Series.....	86
PoE Accessories	87

Video Management Software

VAST Security Station	90
-----------------------------	----

Solution Integration Alliance

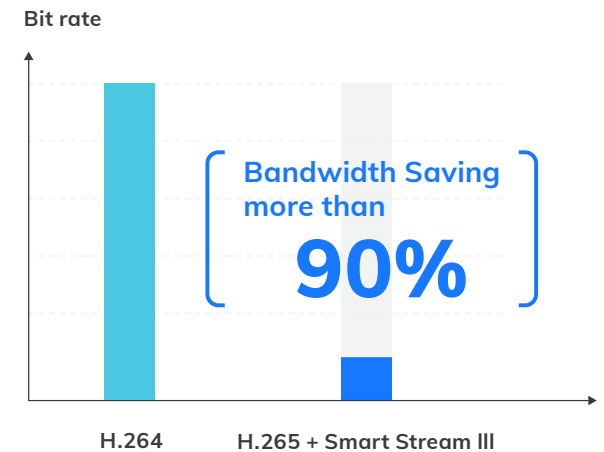
SIA.....	93
----------	----



Advanced Technology

Smart Stream III

VIVOTEK Smart Stream III combines Smart Codec, Dynamic Intra Frame Period, Scene Awareness and Smart FPS technologies to enable the cameras to optimize quality for desired regions and automatically adjust encoding, maximizing bandwidth usage efficiency and lowering storage requirements while maintaining high image quality.



SNV II

SNV stands for Supreme Night Visibility. VIVOTEK SNV II-label products incorporate carefully selected quality optical components and sophisticated image signal processing algorithms to reproduce high quality color images, even in very low-light conditions.



Smart IR III

AI-Based

Deep learning Adaptive IR illuminators based on objects of interest to achieve best evidence capture.

Object of Interest

- People
- Vehicles

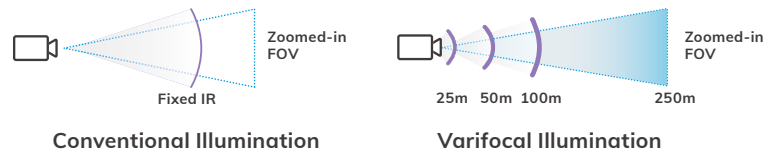


Smart IR II

Vari-Angle IR

Automatic IR angle adjustment to the optical zoom provides consistent IR images in all fields of view.

- Effortless IR angle adjustment
- Wide coverage field of view
- No IR hot spots
- Long-range IR illumination



Camera Link

Inter-camera communication to capture more details.

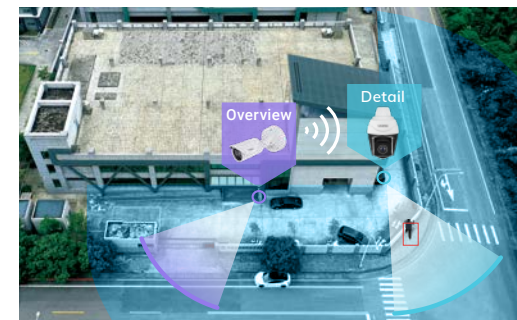
- Spotter camera detects activity at a pre-set location
- Alerts PTZ cameras to zoom onto pre-set location
- PTZ cameras capture clearer details



IB9367-EHT-v2
Wide Angle for overview
(Spotter)



SD9384-EHL
PTZ for Detail
(Go to preset location and track event)



Technologies

Installation Aids

Various Helpful Features to Simplify the Installation Process

Installation-friendly

Modular Mechanical Design

VIVOTEK's brand new mechanical design has made the installation process easier than ever before. The new modular design greatly reduces installation times and costs, allowing installers to take on more projects.

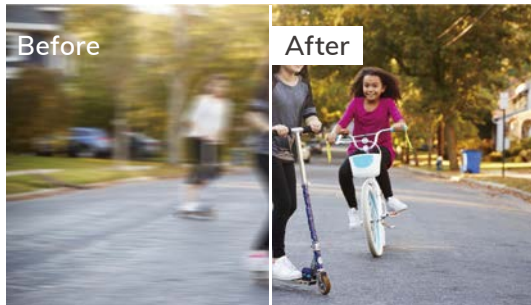


Wi-Fi Installation

USB Adapter
+
Wi-Fi Dongle

iViewer

Direct Network Access for Installation via USB Wi-Fi Adapter
*Available on selected models



Speed Focus
for clearer images around the clock



Automatic IR Angle Adjustment
for best possible IR image

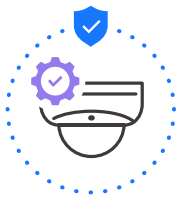


Visual Pixel Calculator
to achieve operational requirements
* Available on selected models

Technologies

Security within Security

Security at the Edge



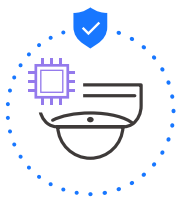
Secure Boot

Secure boot is a mechanism that protects the firmware of the product installed by VIVOTEK. During the camera boot up process, secure boot ensures that unauthenticated code is rejected and protects the camera system from attacks or infections by malicious external code.



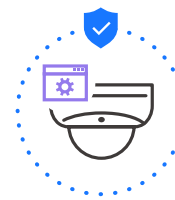
Secure Console

On the basis of secure boot, we updated the remote access security mechanism and disabled the console of the camera from the SSH and SFTP protocol, which defends the vulnerability of the system. Permission from VIVOTEK with key based authentication is the only way to access, providing a safer connection for the surveillance system.



Signed Firmware

VIVOTEK's signed firmware requires a digital signature in the firmware and verification of the signature by VIVOTEK, thereby ensuring that users can trust the firmware has not been tampered with. A device with signed firmware can validate the firmware before allowing installation.

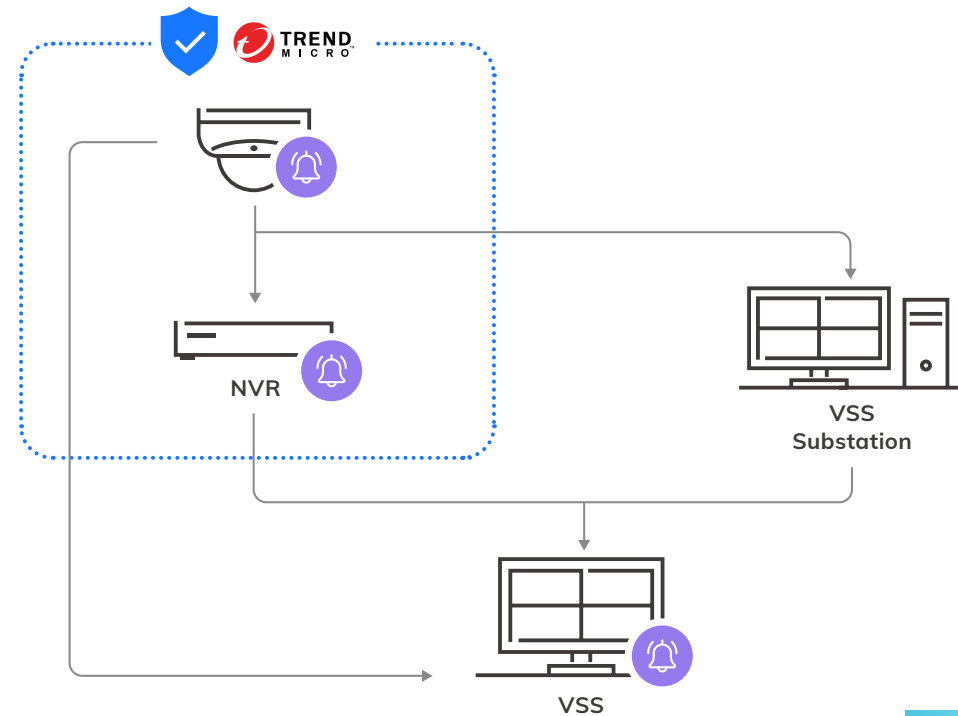


Secure VADP

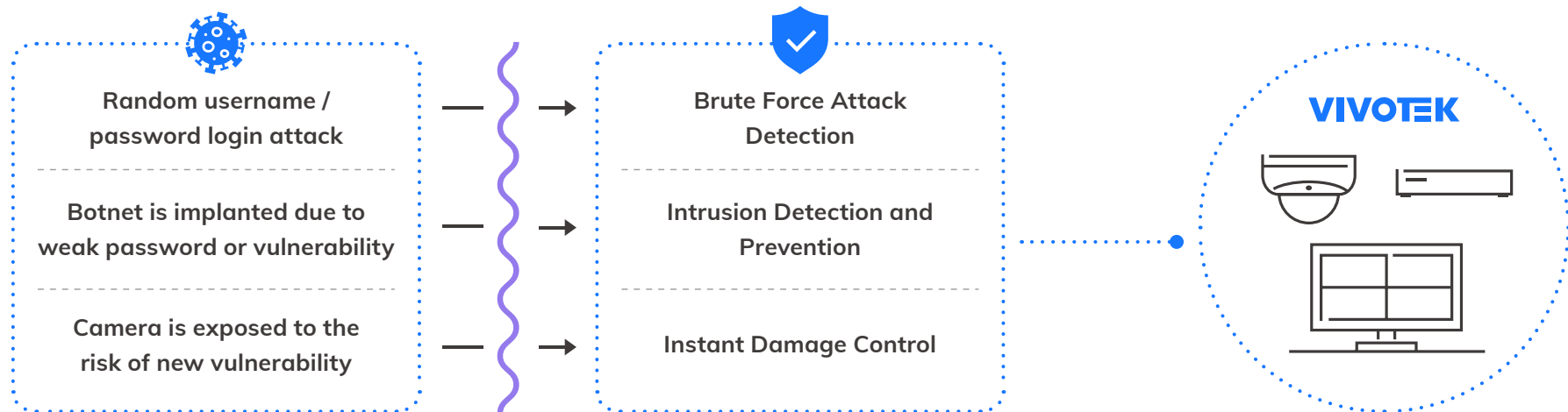
VIVOTEK Application Development Platform (VADP) provides an open platform that enables developers to add on features for specific scenarios or applications with VIVOTEK cameras. Securing the VADP with enhanced security is critical. Applying Secure VADP with digital signature and encryption capabilities makes it safer and more reliable for third-party integration.

Cybersecurity Management Solution

VIVOTEK's cybersecurity assurance efforts are built into the lifecycle of our products, including development, verification, manufacturing, delivery and service. We are constantly evaluating and enhancing our cybersecurity efforts in order to provide our valued customers with the highest quality and most reliable products. By cooperating with the world-renowned cybersecurity company, Trend Micro, and announcing the hardening procedure to users, VIVOTEK is committed to helping minimize and stopping such events from affecting our customers and products.



Multi-Layered Protection for Surveillance Cameras



Multi-Layered Protection with Trend Micro IoT Security

Multi-Layered Protection including Brute Force Attack Detection, Intrusion Detection and Prevention, and Instant Damage Control will automatically secure your network system with the latest signature upgrades.



Cybersecurity Alarm Management with Instant Alerts

Once event notifications in network cameras and VSS VMS have been set up, VIVOTEK's surveillance solution will be immediately alerted when cyberattacks occur.



Event Reports with Cyber Risk Dashboard

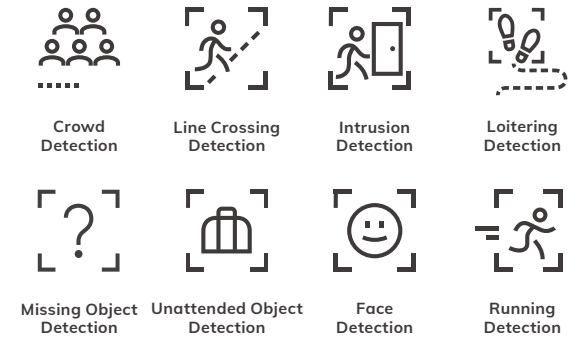
Quickly know attack trend and status, and acquire attack information in order to diagnose your network promptly on VSS and NVRs.



Analytics

AI-Based Analytics

Deep Learning Technology



Smart Motion
Detection

Smart Motion Detection

Recognize human activities with precision, with no negative impact from changes in lighting, shadows, adverse weather, or other factors. Smart Motion Detection greatly reduces the amount of false alarms, and provides continued intelligent protection of people.



Smart VCA

Smart VCA

The on-board Smart Video Content Analytics (VCA) suite includes 8 advanced video analytics, providing smart-edge cameras with the ability for advanced accuracy in people and object detection. It is easily configurable to meet diverse user application requirements.

- Crowd Detection
- Line Crossing Detection
- Intrusion Detection
- Loitering Detection
- Missing Object Detection
- Unattended Object Detection
- Face Detection
- Running Detection

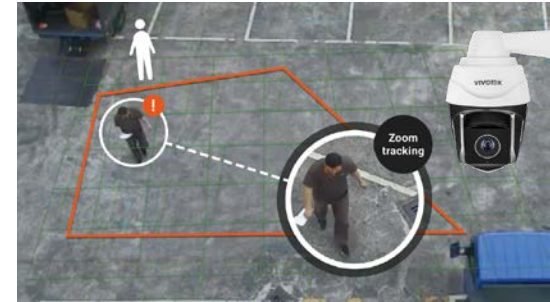


Smart Tracking
Advanced

Smart Tracking Advanced

Smart Tracking Advanced is an innovative Deep Learning Technology for VIVOTEK's new PTZ cameras designed to increase effectiveness when automatically tracking people in motion. It is especially effective for applications and situations in which individuals require special attention, such as bank vaults, or parking facilities after working hours.

- Line Crossing Detection
- Intrusion Detection
- Loitering Detection
- Face Detection

Parking Violation
Detection

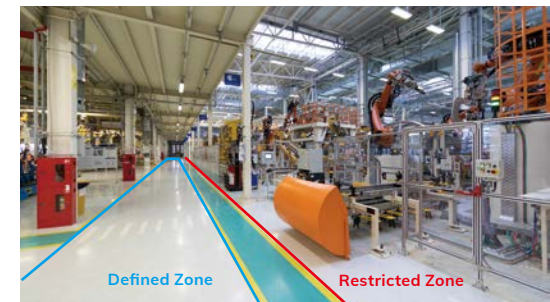
Parking Violation Detection

Parking Violation Detection can detect when vehicles stop inside a restricted area. Application scenarios include cars parking in restricted areas at the airport, bus & train stations, and bicycle lanes. Reduce traffic congestion through detecting illegally parked vehicles.

Restricted Zone
Detection

Restricted Zone Detection

Restricted Zone Detection ensures that people follow guidelines and rules in order to comply with safety procedures. Places such as laboratories, food processing, or construction zones often require equipment checks before entry. Restricted Zone Detection ensures that people follow the right procedure for entering these facilities.



Search

Deep Search

Powerful and Efficient Evidence Search with AI

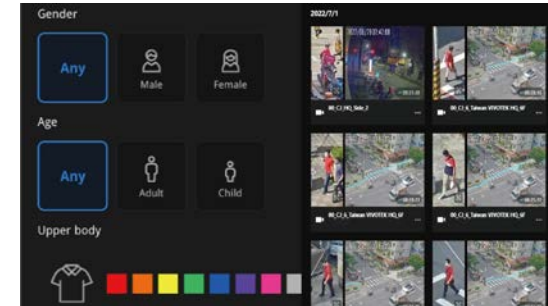


Deep Search is an AI-based post-event search functionality, featuring **Attribute Search**, **Scene Search**, and **Re-Search**. By accessing the metadata provided by VIVOTEK cameras with Vision Object Analytics, users no longer have to scroll through the video footage frame by frame. Factoring in multiple attributes and rules makes post-event search faster and easier. Available in VSS and new Core+ AI NVR's.



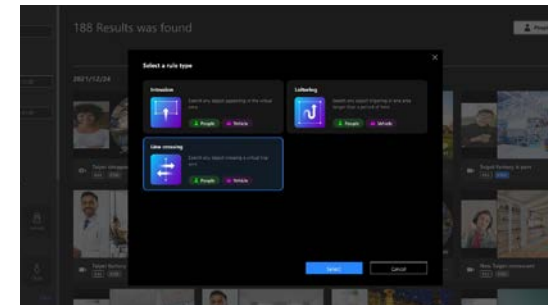
Attribute Search

Use specific attributes (e.g. gender, age group, clothing/vehicle color, vehicle type, etc.) to quickly and accurately search for people or vehicles. With **Attribute Search**, users can narrow down their search parameters to specific factors, such as red motorcycle or blue shirt female.



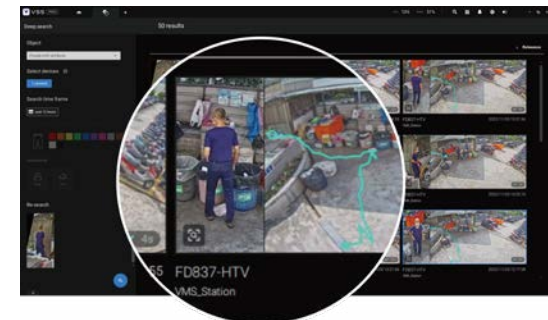
Scene Search

Scene Search allows users to quickly review camera footage by using intrusion, line crossing, or loitering detection on the recorded video. For example using intrusion detection, users can draw a box at a point of interest and select a time period to quickly find results of all events where someone, or vehicle, entered that region.



Re-Search

After finding a person of interest on one camera, users can use that image to search for them again (**Re-Search**) across all other cameras in the entire surveillance system. This helps users identify and track all the activities of this person of interest throughout the property. Only available on VSS Pro.



Network Cameras



Network Camera Naming Rule

FD	9	1	6	7	-	HT	-	v2
1-2 nd	3 rd	4 th	5 th	6 th		7 th		8 th

Network Camera Model

1-2 nd Model Category	
Code	Description
CC	Compact Cube Camera
CD	Corner Camera
CU	Camera Unit
FD	Fixed Dome Camera
FE	Fisheye Camera
IB	Bullet Camera
IP	Box Camera
IT	Turret Dome Camera
IZ	Zoom Lens Camera
MA	Multiple Adjustable Views Camera
MD	Mobile Dome Camera
MS	Multiple Sensor Camera
SC	Smart Counter
SD	Speed Dome Camera
TB	Thermal Bullet Camera
VC	Video Core
VS	Video Server

3 rd A/V Type	
NO.	Description
8	H.264 / MJPEG
9	H.265 / H.264 / MJPEG

4 th VC Series - Amount of Channel	
NO.	Description
1 - 9	1 - 9 Channel

4 th IP Camera Type	
NO.	Description
1	Indoor IP Camera
3	Outdoor IP Camera
5	Mobile Certified

5 th IP Camera - Resolution	
NO.	Description
1	≥ 10MP CMOS Sensor
2	≥ 20MP CMOS Sensor
3	≥ 30MP CMOS Sensor
4	≥ 40MP CMOS Sensor
5	≥ 50MP CMOS Sensor
6	≥ 2.0MP CMOS Sensor
7	≥ 3.0MP CMOS Sensor
8	≥ 5.0MP CMOS Sensor
9	≥ 8.0MP CMOS Sensor

6 th Running Number	
NO.	Description
-	1 - 99

7 th Extension / Feature	
NO.	Description
D	DC Power Input
E	Extended Temperature ≤ -40°C
H	High Dynamic Range (Wide Dynamic Range)
L	Lite
LPC	License Plate Capture
LPR	Embedded License Plate Recognition Software
M	Manual Focal
N	940nm IR LED
P	P-iris (Box Cameras)
T	Remote Focus i-CS (Box Cameras)
V	Outdoor Vandal Proof

8 th Digit Extension	
NO.	Description
v	1 - 99
A	A-Z
O	OSSA

SVC Definition

S SERIES	
SUPREME	
Definition	
Top of the line, cutting edge technology, superior image quality	

V SERIES	
VERSATILE	
Definition	
Advanced and feature rich for most applications, great image quality	

C SERIES	
COMPETITIVE	
Definition	
Cost effective professional surveillance, good image quality	



Network Camera

SUPREME Series

- Top of the line
- Cutting edge technology
- Superior image quality



AI Analytics

Smart VCA included in all S-Series cameras.



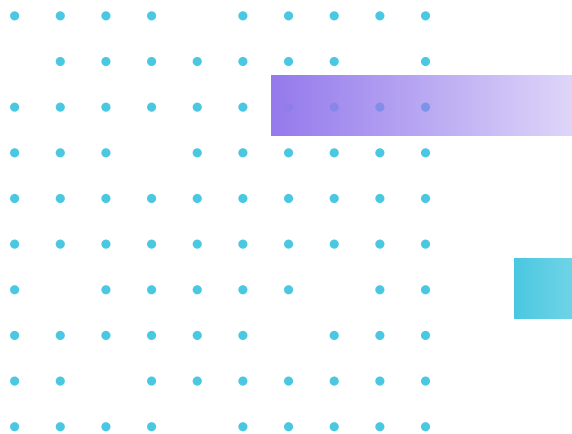
Smart IR III

AI-Based deep learning Adaptive IR illuminators targeting people/ vehicles to achieve best evidence capture.



Detailed Coverage

4K Resolution and Multi-Sensor models for maximum coverage





Network Cameras

SUPREME Series

[BACK TO CONTENTS](#) 

Network Camera

4K Cameras

Maximum Clarity with 91-Series 4K Resolution

4K**Highest Detailed Video**

VIVOTEK 4K cameras have the highest pixel density of all our camera products, 4x standard 1080P resolution.

**AI-Powered Video Analytics**

VIVOTEK's Smart VCA is a suite of multiple analytics that provide faster and more accurate detection for various scenarios.

**Smart Motion Detection**

With accurate precision to detect human activity only, while also intelligently ignoring background changes in a given scene, VIVOTEK's SMD greatly minimizes the number of false alarms.

**Significantly Lower Bandwidth via Smart Stream III**

Fully compatible with H.264 and H.265, VIVOTEK's Smart Stream III allows reducing bandwidth consumption by up to 90%.





NEW

FD9391-EHTV-v2



NEW

IB9391-EHTV-v2



IP9191-HT-v2

4K Cameras	Outdoor Dome	Bullet	Box
Camera Features			
Sensor Type	1/1.8" Progressive CMOS	1/1.8" Progressive CMOS	1/1.8" Progressive CMOS
Lens Type/ Focal Length/ F-number	Motorized/ 4.4 ~ 10.2 mm / F1.38 ~ F2.24	Motorized/ 4.4 ~ 10.2 mm / F1.38 ~ F2.24	Remote Back Focus i-CS/ 3.9 ~ 10 mm/ F1.5
Field of View	110° ~ 43° (H) 57° ~ 24° (V)	100° ~ 43° (H) 50° ~ 24° (V)	119° ~ 46° (H) 63° ~ 26° (V)
Day/ Night	•	•	•
IR Illuminators	50 m, IR LED*4 Smart IR III	50 m, IR LED*4 Smart IR III	-
Min. Illumination	0.02 lux @ F1.38 (Color) <0.005 lux @ F1.38 (B/W) 0 lux with IR illumination on	0.02 lux @ F1.38 (Color) <0.005 lux @ F1.38 (B/W) 0 lux with IR illumination on	0.01 lux @ F1.5 (Color) 0.005 lux @ F1.5 (B/W)
Max. Resolution/ Frame Rate	30 fps @ 3840x2160	30 fps @ 3840x2160	30 fps @ 3840x2160
WDR Technology*	WDR Pro	WDR Pro	WDR Pro
On-board Storage	microSD/SDHC/SDXC card slot	microSD/SDHC/SDXC card slot	microSD/SDHC/SDXC card slot
Video/ Audio/ Network			
Video Compression	Triple-Codec (H.265/H.264/MJPEG)	Triple-Codec (H.265/H.264/MJPEG)	Triple-Codec (H.265/H.264/MJPEG)
Audio	Two-way Audio (Full duplex)	Two-way Audio (Full duplex)	Two-way Audio (Full duplex)
Digital Input/ Output	2/2	3/3	2/2
ONVIF	Profile G/S/T	Profile G/S/T	Profile G/S/T
Solution Integration			
Security	Secure Boot, Signed Firmware, Trend Micro IoT Security	Secure Boot, Signed Firmware, Trend Micro IoT Security	Secure Boot, Signed Firmware, Trend Micro IoT Security
VCA	Smart Motion Detection, Smart VCA, Vision OA	Smart Motion Detection, Smart VCA, Vision OA	Smart Motion Detection, Smart VCA, Vision OA
General			
Power Input/ Consumption	AC 24V / DC 12V / PoE Max. 25 W	AC 24V/ DC 12V/ PoE Max. 25 W	AC 24V/ DC 12V/ PoE Max. 15 W
Housing	IP66, IP67, IK10, NEMA 4X	IP66, IP67, IK10, NEMA 4X	-
Dimensions	ø 174 x 123 mm	ø 153 x 283 mm	155 x 70 x 61 mm (w/o lens) 210 x 70 x 66 mm (w/ lens)
Operating Temperature	-50°C ~ 60°C (-58°F ~ 140°F)	-50°C ~ 60°C (-58°F ~ 140°F)	-10°C ~ 60°C (14°F ~ 140°F)
NDA Compliance Product	•	•	•

* All specifications are subject to change without notice.

Network Camera

2MP Cameras

Best 2MP Image Quality with 65-Series



Smart IR III

AI-Based deep learning Adaptive IR illuminators targeting people/vehicles to achieve best evidence capture.



AI-Powered Video Analytics

VIVOTEK's Smart VCA is a suite of multiple analytics that provide faster and more accurate detection for various scenarios.



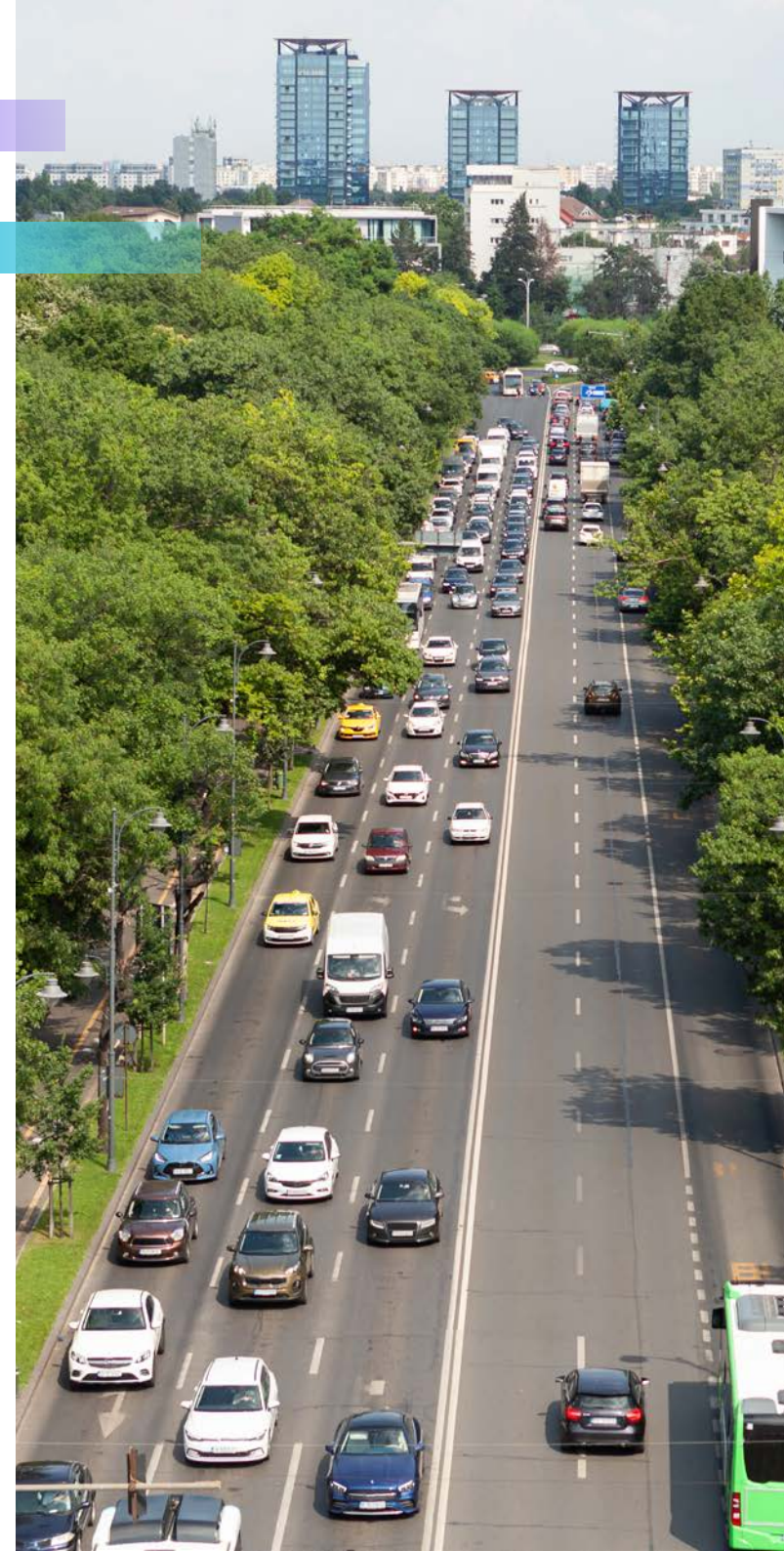
Smart Motion Detection

With accurate precision to detect human activity only, while also intelligently ignoring background changes in a given scene, VIVOTEK's SMD greatly minimizes the number of false alarms.



Significantly Lower Bandwidth via Smart Stream III

Fully compatible with H.264 and H.265, VIVOTEK's Smart Stream III allows reducing bandwidth consumption by up to 90%.





NEW

FD9365-EHTV-v2



NEW

IB9365-EHTV-v2



IP9165-HT-v2

2MP Cameras	Outdoor Dome	Bullet	Box
Camera Features			
Sensor Type	1/2" progressive CMOS	1/2" progressive CMOS	1/2" Progressive CMOS
Lens Type/ Focal Length/ F-number	Motorized/ 4 ~ 9 mm (2.8 ~ 11.4 mm, equivalent focal length @ 1/2.8")/ F1.3 ~ F2.2	Motorized/ 4 ~ 9 mm (3.5 ~ 11.4 mm, equivalent focal length @ 1/2.8")/ F1.3 ~ F2.2	Remote Back Focus i-CS/ 3.9 ~ 10 mm/ F1.5 ~ F2.7
Field of View	120° ~ 46° (H) 60° ~ 26° (V)	100° ~ 46° (H) 52° ~ 26° (V)	110° ~ 43° (H) 59° ~ 24° (V)
Day/ Night	•	•	•
IR Illuminators	50 m, IR LED*4 Smart IR III	50 m, IR LED*4 Smart IR III	-
Min. Illumination	0.01 lux @ F1.3 (Color) <0.005 lux @ F1.3 (B/W) 0 Lux with IR illumination on	0.01 lux @ F1.3 (Color) <0.005 lux @ F1.3 (B/W) 0 Lux with IR illumination on	0.01 lux @ F1.5 (Color) <0.005 lux @ F1.5 (B/W)
Max. Resolution/ Frame Rate	60 fps @ 1920x1080	60 fps @ 1920x1080	60 fps @ 1920x1080
WDR Technology*	WDR Pro II	WDR Pro II	WDR Pro II
On-board Storage	microSD/SDHC/SDXC card slot	microSD/SDHC/SDXC card slot	microSD/SDHC/SDXC card slot
Video/ Audio/ Network			
Video Compression	Triple-Codec (H.265/H.264/MJPEG)	Triple-Codec (H.265/H.264/MJPEG)	Triple-Codec (H.265/H.264/MJPEG)
Audio	Two-way Audio (Full duplex)	Two-way Audio (Full duplex)	Two-way Audio (Full duplex)
Digital Input/ Output	2/2	3/3	2/2
ONVIF	Profile G/S/T	Profile G/S/T	Profile G/S/T
Solution Integration			
Security	Secure Boot, Signed Firmware, Trend Micro IoT Security	Secure Boot, Signed Firmware, Trend Micro IoT Security	Secure Boot, Signed Firmware, Trend Micro IoT Security
VCA	Smart Motion Detection, Smart VCA, Vision OA	Smart Motion Detection, Smart VCA, Vision OA	Smart Motion Detection, Smart VCA
General			
Power Input/ Consumption	AC 24V/ DC 12V/ PoE Max. 25 W	AC 24V/ DC 12V/ PoE Max. 25 W	AC 24V/ DC 12V/ PoE Max. 9 W (DC 12V) Max. 18 W (AC 24V) Max. 9.06 W (PoE)
Housing	IP66, IP67, IK10, NEMA 4X	IP66, IP67, IK10, NEMA 4X	-
Dimensions	ø 174 x 123 mm	ø 153 x 283 mm	155 x 70 x 61 mm (w/o lens) 210 x 70 x 66 mm (w/ lens)
Operating Temperature	-50°C ~ 60°C (-58°F ~ 140°F)	-50°C ~ 60°C (-58°F ~ 140°F)	-10°C ~ 60°C (14°F ~ 140°F)
NDAA Compliance Product	•	•	•

* All specifications are subject to change without notice.

BACK TO CONTENTS

Network Camera

360° Fisheye Cameras

A Whole Different Perspective with Fisheye Models



360° Views

With fisheye lenses, VIVOTEK fisheye IP cameras can cover 360° with no blind spots, excellent for full situational coverage.



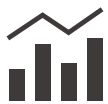
Dewarping Technology

VIVOTEK fisheye lens dewarping technology enables users to target specific areas with different viewing modes.



Smart IR II

With Smart IR II infrared illuminators, users can see in all directions up to 20m in total darkness. (outdoor models only)



AI-Powered Video Analytics

VIVOTEK's Smart VCA is a suite of multiple analytics that provide faster and more accurate detection for various scenarios.



10



1R



FE9391-EHV-v2



FE9191-H-v2



FE9192-H



FE9382-EHV-v2

360° Fisheye Cameras	12 Megapixel			6 Megapixel
Camera Features				
Sensor Type	1/2.3" Progressive CMOS in 4056x3040	1/2.3" Progressive CMOS in 4056x3040	1/2.3" Progressive CMOS in 4056x3040	1/1.8" Progressive CMOS in 3840x2160
Lens Type/ Focal Length/ F-number	Fixed/ 1.22 mm/ F2.0	Fixed/ 1.22 mm/ F2.0	Fixed / 1.22 mm / F2.0	Fixed/ 1.245 mm/ F1.6
Field of View	180° (H) 180° (V)	180° (H) 180° (V)	180° (H) 180° (V)	180° (H) 180° (V)
Day/ Night	•	•	•	•
IR Illuminators	20 m, IR LED*4	-	-	20 m, IR LED*4
Min. Illumination	0.1 lux @ F2.0 (Color) <0.005 lux @ F2.0 (B/W) 0 lux with IR illumination on	0.1 lux @ F2.0 (Color) <0.005 lux @ F2.0 (B/W)	0.1 lux @ F2.0 (Color) <0.005 lux @ F2.0 (B/W)	0.065 lux @ F1.6 (Color) <0.001 lux @ F1.6 (B/W) 0 lux with IR illumination on
Max. Resolution/ Frame Rate	30 fps @ 2944x2944	30 fps @ 2944x2944	30 fps @ 2944x2944	30 fps @ 2048x2048
WDR Technology*	WDR Pro	WDR Pro	WDR Pro	WDR Pro
On-board Storage	microSD/ SDHC/ SDXC card slot	microSD/ SDHC/ SDXC card slot	microSD/ SDHC/ SDXC card slot	microSD/ SDHC/ SDXC card slot
Video/ Audio/ Network				
Video Compression	Triple-Codec (H.265/ H.264/ MJPEG)	Triple-Codec (H.265/ H.264/ MJPEG)	Triple-Codec (H.265/ H.264/ MJPEG)	Triple-Codec (H.265/ H.264/ MJPEG)
Audio	Two-way Audio (Full duplex) (optional p/n)	Two-way Audio (Full duplex) (cable accessory)	One-way Audio	Two-way Audio (Full duplex) (optional p/n)
Digital Input/ Output	1/1 (optional p/n)	1/1 (cable accessory)	-	1/1 (optional p/n)
ONVIF	Profile G/S/T	Profile G/S/T	Profile G/S/T	Profile G/S/T
Solution Integration				
Security	Secure Boot, Signed Firmware, Trend Micro IoT Security	Secure Boot, Signed Firmware, Trend Micro IoT Security	Secure Boot, Signed Firmware, Trend Micro IoT Security	Secure Boot, Signed Firmware, Trend Micro IoT Security
VCA	Smart Motion Detection, Smart VCA, Vision OA	Smart Motion Detection, Smart VCA, Vision OA	Smart Motion Detection, Smart VCA, Vision OA	Smart Motion Detection, Smart VCA, Vision OA
General				
Power Input/ Consumption	PoE / Max. 22.5 W	PoE / Max. 9 W	PoE / Max. 9 W	PoE / Max. 12.5 W
Housing	IP66, IK10, NEMA 4X	IK10	IK10	IP66, IK10, NEMA 4X
Dimensions	ø 150 x 68.2 mm	ø 150 x 68.2 mm	ø 82 x 122 mm	ø 150 x 68.2 mm
Operating Temperature	-40°C ~ 55°C (-40°F ~ 131°F)	-10°C ~ 50°C (14°F ~ 122°F)	-10°C ~ 50°C (14°F ~ 122°F)	-40°C ~ 60°C (-40°F ~ 140°F)
NDA Compliance Product	•	•	•	•

* All specifications are subject to change without notice.

Network Camera

Multi-Sensor Cameras

End to End Coverage with VIVOTEK Multi-Sensor models



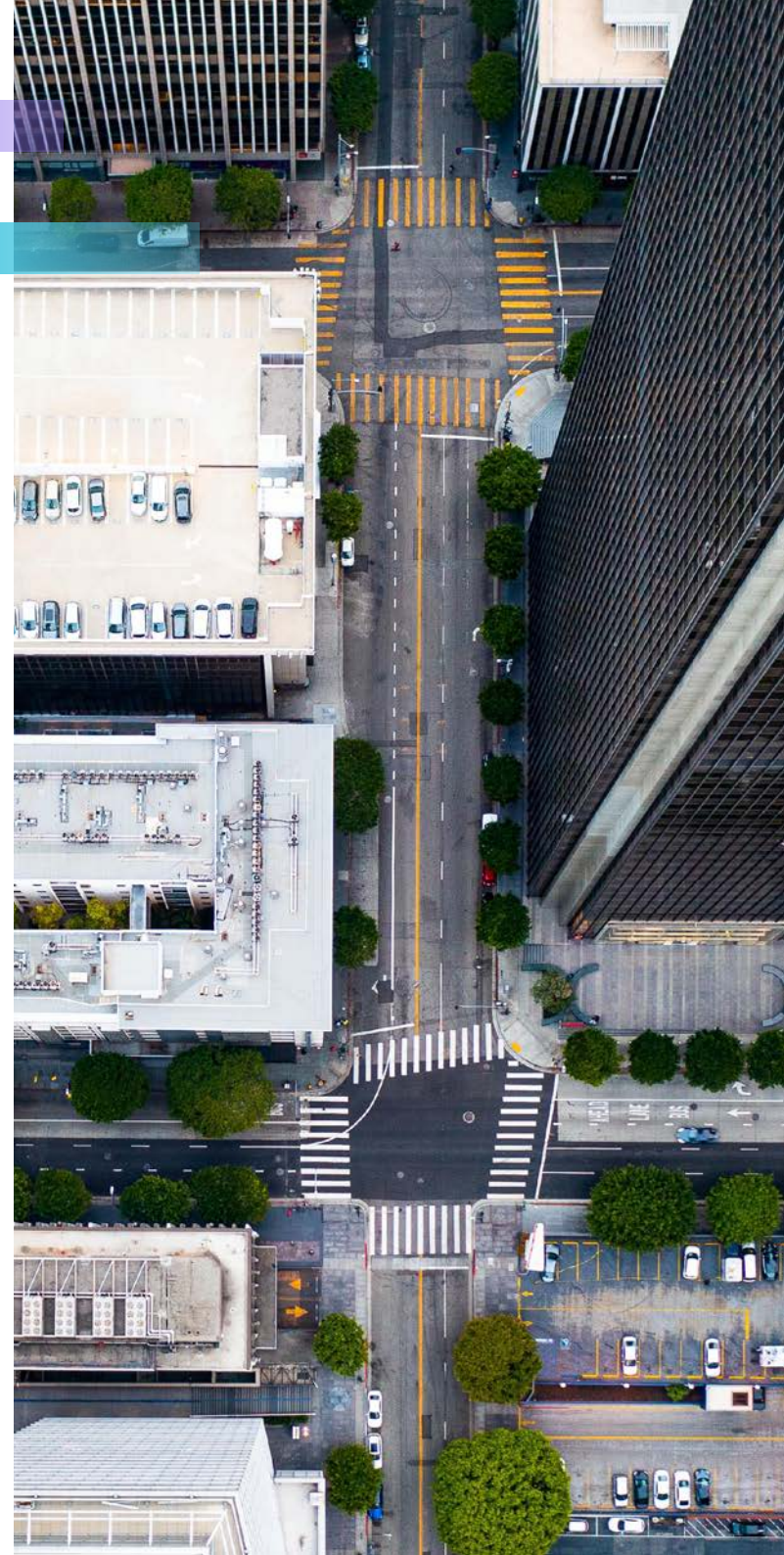
20 Megapixels

4 x 5MP sensors for a total of 20MP for complete comprehensive coverage.



Multi-Directional

The MA9322-EHTVL has 4 independent sensors, allowing users the ability to target 4 regions from a single IP address, 4 cameras in 1.

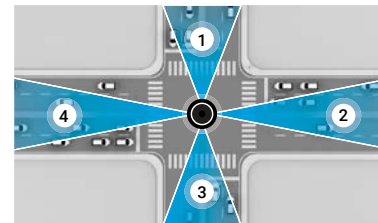




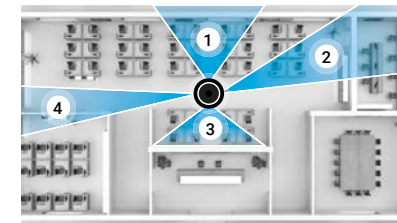
Model **NEW** MA9322-EHTVL MS9321-EHV-v2

20 Megapixel Cameras	Multi-Directional	180° Panoramic
Camera Features		
Sensor Type	1/2.7" Progressive CMOS	1/2.8" Progressive CMOS
Lens Type/ Focal Length/ F-number	Motorized/ 3.7 ~ 7.7 mm/ F1.9 ~ F2.9	Fixed-focal / 3.5 mm / F2.0
Field of View	88.6° ~ 40.1° (H) 61.2° ~ 28.6° (V)	180° (Horizontal) 65° (Vertical)
Day/ Night	•	•
IR Illuminators	30 m	30 m
Min. Illumination	0.035 lux @ F1.9 (Color) 0.005 lux @ F1.9 (B/W) 0 lux with IR illumination on	0.15 lux@F2.0 0 lux with IR illumination on
Max. Resolution/ Frame Rate	12 fps @ 2688x1920	30 fps @ 7168x2688
WDR Technology*	WDR Pro	WDR Pro
On-board Storage	microSD/SDHC/SDXC card slot	microSD/SDHC/SDXC card slot
Video/ Audio/ Network		
Video Compression	Triple-Codec (H.265/H.264/MJPEG)	Triple-Codec (H.265/H.264/MJPEG)
Audio	Two-way Audio (Full duplex)	Two-way Audio (Full duplex)
Digital Input/ Output	1/1	1/1
ONVIF	-	•
Solution Integration		
Security	-	Trend Micro IoT Security Signed firmware / secure boot
VCA	-	Smart Motion Detection, Vision Object Analytics, Smart VCA
General		
Power Input/ Consumption	AC 24V/ PoE Max. 25 W/ 25 W	AC 24V/ PoE
Housing	IP66, IK10, NEMA 4X	IP66, IK10
Dimensions	ø 267 x 114 mm ø 275 x 118 mm (w/ bracket)	308 x 167 x 130 mm
Operating Temperature	-40°C ~ 50°C (-40°F ~ 122°F)	-40°C ~ 55°C (-40°F ~ 131°F)
NDA Compliance Product	•	•

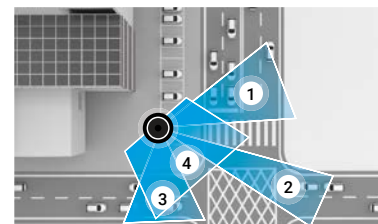
Traffic



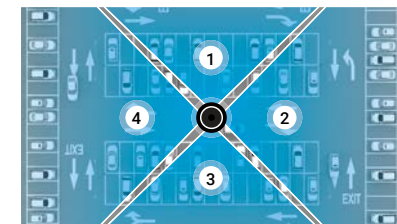
Interiors



Corners



Parking



* All specifications are subject to change without notice.



Network Camera

VERSATILE Series

Advanced and feature rich for most applications, great image quality.



Available AI Analytics

Add Smart VCA to V-Series cameras with additional license purchase.



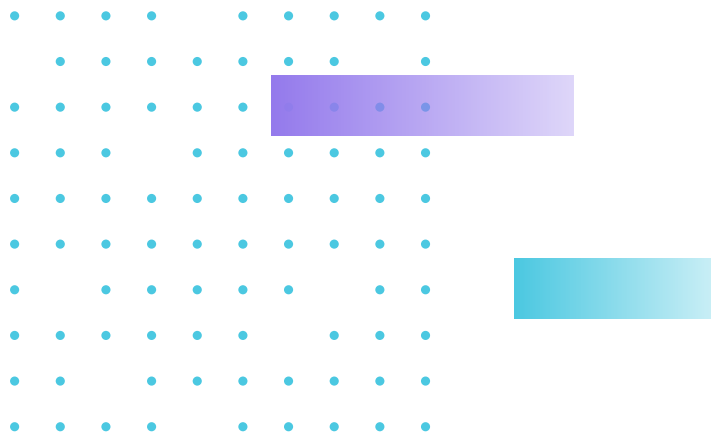
Various Lenses Option

Offer various lens options, from fixed focal length to motorized adjustable lenses, allowing you to capture the finest details.



Wi-Fi Installation


Setup cameras with a smartphone (available on select models only)





Network Cameras

VERSATILE Series

[BACK TO CONTENTS](#) 





Network Camera

5MP 87-A-Series Cameras

Comprehensive Security with VIVOTEK 87-A Series



Fully Loaded

5MP VIVOTEK 87-A series of products include 2-way audio, 2x Digital Inputs, and 2x Digital Outputs to ensure maximum alarm capabilities.



AI-Powered Video Analytics (w/ license purchase)

VIVOTEK's Smart VCA is a suite of multiple analytics that provide faster and more accurate detection for various scenarios.



Smart Motion Detection

With accurate precision to detect human activity only, while also intelligently ignoring background changes in a given scene, VIVOTEK's SMD greatly minimizes the number of false alarms.



Significantly Lower Bandwidth via Smart Stream III

Fully compatible with H.264 and H.265, VIVOTEK's Smart Stream III allows reducing bandwidth consumption by up to 90%.





FD9387-HTV-A/EHTV-A



FD9187-HT-A



IB9387-HT-A/EHT-A

5MP Cameras	Outdoor Dome	Indoor Dome	Bullet
Camera Features			
Sensor Type	1/2.7" Progressive CMOS	1/2.7" Progressive CMOS	1/2.7" Progressive CMOS
Lens Type/ Focal Length/ F-number	Motorized/ 2.7 ~ 13.5 mm/ F1.4 ~ F2.8	Motorized/ 2.7 ~ 13.5 mm/ F1.4 ~ F2.8	Motorized/ 2.7 ~ 13.5 mm/ F1.4 ~ F2.8
Field of View	100° ~ 30° (H) 72° ~ 23° (V)	100° ~ 30° (H) 72° ~ 23° (V)	100° ~ 30° (H) 72° ~ 23° (V)
Day/ Night	•	•	•
IR Illuminators	50 m, IR LED*4	50 m, IR LED*4	50 m, IR LED*6
Min. Illumination	0.075 lux @ F1.4 (Color) <0.01 lux @ F1.4 (B/W) 0 lux with IR illumination on	0.075 lux @ F1.4 (Color) <0.01 lux @ F1.4 (B/W) 0 lux with IR illumination on	0.075 lux @ F1.4 (Color) <0.01 lux @ F1.4 (B/W) 0 lux with IR illumination on
Max. Resolution/ Frame Rate	30 fps @ 2560x1920 60 fps @ 1920x1080	30 fps @ 2560x1920 60 fps @ 1920x1080	30 fps @ 2560x1920 60 fps @ 1920x1080
WDR Technology*	WDR Pro	WDR Pro	WDR Pro
On-board Storage	microSD / SDHC / SDXC card slot	microSD / SDHC / SDXC card slot	microSD / SDHC / SDXC card slot
Video/ Audio/ Network			
Video Compression	Triple-Codec (H.265/H.264/MJPEG)	Triple-Codec (H.265/H.264/MJPEG)	Triple-Codec (H.265/H.264/MJPEG)
Audio	Two-way Audio (Full duplex)	Two-way Audio (Full duplex)	Two-way Audio (Full duplex)
Digital Input/ Output	2/2	2/2	2/2
ONVIF	Profile G/S	Profile G/S	Profile G/S
Solution Integration			
Security	Trend Micro IoT Security	Trend Micro IoT Security	Trend Micro IoT Security
VCA	Smart Motion Detection, Smart VCA (optional)	Smart Motion Detection, Smart VCA (optional)	Smart Motion Detection, Smart VCA (optional)
General			
Power Input/ Consumption	AC 24V (optional) /DC 12V /PoE FD9387-HTV-A: Max. 12 W FD9387-EHTV-A: Max. 22 W	AC 24V (optional) /DC 12V /PoE Max. 12 W	AC 24V/ DC 12V/ PoE IB9387-HT-A: Max. 12.95 W IB9387-EHT-A: Max. 25 W
Housing	IP66, IP67, IK10	-	IP66, IP67, IK10 (Metal housing)
Dimensions	ø 155 x 103.2 mm	ø 139 x 103 mm	118 x 118 x 294.6 mm
Operating Temperature	-30°C ~ 60°C (-22°F ~ 140°F) (-HTV-A) -50°C ~ 60°C (-58°F ~ 140°F) (-EHTV-A)	-10°C ~ 45°C (14°F ~ 113°F)	-30°C ~ 60°C (-22°F ~ 140°F) (-HT-A) -50°C ~ 60°C (-58°F ~ 140°F) (-EHT-A)
NDA Compliance Product	•	•	•

* All specifications are subject to change without notice.



Network Camera

5MP 89-v2-Series Cameras

Essential Surveillance with VIVOTEK 89-v2 Series



Only the Necessities

5MP VIVOTEK 89-v2 series remove the 2-way audio, digital inputs, and digital outputs for customers looking only for a pure IP surveillance solution.



Variety

VIVOTEK 89-v2 series is available in domes (outdoor, indoor), bullets, and turret housings, with both fixed lens and motorized lens options.



AI-Powered Video Analytics (w/ license purchase)

VIVOTEK's Smart VCA is a suite of multiple analytics that provide faster and more accurate detection for various scenarios.



Smart Motion Detection

With accurate precision to detect human activity only, while also intelligently ignoring background changes in a given scene, VIVOTEK's SMD greatly minimizes the number of false alarms.





Model FD9389-EHV-v2 FD9389-EHTV-v2 FD9189-H-v2 FD9189-HT-v2 IB9389-EH-v2 IB9389-EHT-v2 IT9389-H-v2

5MP Cameras	Outdoor Dome		Indoor Dome		Bullet		Turret
Camera Features							
Sensor Type	1/2.7" Progressive CMOS	1/2.7" Progressive CMOS	1/2.7" Progressive CMOS	1/2.7" Progressive CMOS	1/2.7" Progressive CMOS	1/2.7" Progressive CMOS	1/2.7" Progressive CMOS
Lens Type/ Focal Length/ F-number	Fixed/ 2.8 mm / F2.0	Motorized/ 2.8 ~ 10mm/ F1.8 ~ F2.74	Fixed/ 2.8 mm / F2.0	Motorized/ 2.8 ~ 10mm/ F1.8 ~ F2.74	Fixed/ 3.6 mm/ F2.0	Motorized/ 2.8 ~ 10mm/ F1.8 ~ F2.74	Fixed/ 2.8 mm/ F2.0
Field of View	103° (H) 76° (V)	95° ~ 41° (H) 69° ~ 31° (V)	103° (H) 76° (V)	95° ~ 41° (H) 69° ~ 31° (V)	76° (H) 56° (V)	95° ~ 41° (H) 69° ~ 31° (V)	103° (H) 76° (V)
Day/ Night	•	•	•	•	•	•	•
IR Illuminators	30 m, IR LED*4	30 m, IR LED*4	30 m, IR LED*4	30 m, IR LED*4	30 m, IR LED*4	30 m, IR LED*4	30 m, IR LED*2
Min. Illumination	0.06 lux @ F2.0 (Color) 0.01 lux @ F2.0 (B/W) 0 lux with IR illumination on	0.06 lux @ F1.8 (Color) 0.01 lux @ F1.8 (B/W) 0 lux with IR illumination on	0.06 lux @ F2.0 (Color) 0.01 lux @ F2.0 (B/W) 0 lux with IR illumination on	0.06 lux @ F1.8 (Color) 0.01 lux @ F1.8 (B/W) 0 lux with IR illumination on	0.06 lux @ F2.0 (Color) 0.01 lux @ F2.0 (B/W) 0 lux with IR illumination on	0.06 lux @ F1.8 (Color) 0.01 lux @ F1.8 (B/W) 0 lux with IR illumination on	0.06 lux @ F2.0 (Color) 0.01 lux @ F2.0 (B/W) 0 lux with IR illumination on
Max. Resolution/ Frame Rate	30 fps @ 2560x1920 60 fps @ 1920x1080	30 fps @ 2560x1920 60 fps @ 1920x1080	30 fps @ 2560x1920 60 fps @ 1920x1080	30 fps @ 2560x1920 60 fps @ 1920x1080	30 fps @ 2560x1920 60 fps @ 1920x1080	30 fps @ 2560x1920 60 fps @ 1920x1080	30 fps @ 2560x1920 60 fps @ 1920x1080
WDR Technology*	WDR Pro	WDR Pro	WDR Pro	WDR Pro	WDR Pro	WDR Pro	WDR Pro
On-board Storage	microSD/SDHC/SDXC card slot	microSD/SDHC/SDXC card slot	microSD/SDHC/SDXC card slot	microSD/SDHC/SDXC card slot	microSD/SDHC/SDXC card slot	microSD/SDHC/SDXC card slot	microSD/SDHC/SDXC card slot
Video/ Audio/ Network							
Video Compression	Triple-Codec (H.265/H.264/MJPEG)	Triple-Codec (H.265/H.264/MJPEG)	Triple-Codec (H.265/H.264/MJPEG)	Triple-Codec (H.265/H.264/MJPEG)	Triple-Codec (H.265/H.264/MJPEG)	Triple-Codec (H.265/H.264/MJPEG)	Triple-Codec (H.265/H.264/MJPEG)
Audio	One-way Audio	One-way Audio	One-way Audio	One-way Audio	-	-	One-way Audio
Digital Input/ Output	-	-	-	-	-	-	-
ONVIF	Profile G/S/T	Profile G/S/T	Profile G/S/T	Profile G/S/T	Profile G/S/T	Profile G/S/T	Profile G/S/T
Solution Integration							
Security	Secure Boot, Signed Firmware, Trend Micro IoT Security	Secure Boot, Signed Firmware, Trend Micro IoT Security	Secure Boot, Signed Firmware, Trend Micro IoT Security	Secure Boot, Signed Firmware, Trend Micro IoT Security	Secure Boot, Signed Firmware, Trend Micro IoT Security	Secure Boot, Signed Firmware, Trend Micro IoT Security	Secure Boot, Signed Firmware, Trend Micro IoT Security
VCA	Smart Motion Detection, Smart VCA (optional)	Smart Motion Detection, Smart VCA (optional)	Smart Motion Detection, Smart VCA (optional)	Smart Motion Detection, Smart VCA (optional)	Smart Motion Detection, Smart VCA (optional)	Smart Motion Detection, Smart VCA (optional)	Smart Motion Detection, Smart VCA (optional)
General							
Power Input/ Consumption	PoE/ Max. 8.55 W	PoE/ Max. 12.3 W	PoE/ Max. 6.3 W	PoE/ Max. 9.7 W	PoE/ Max. 11 W	PoE/ Max. 12.95 W	PoE/ Max. 7.4 W
Housing	IP66, IK10	IP66, IK10	-	-	IP66, IK10 (housing)	IP66, IK10 (housing)	IP66, IK08
Dimensions	ø 129 x 94 mm	ø 129 x 94 mm	ø 130 X 95 mm	ø 130 X 95 mm	ø 86 x 300 mm	ø 88 x 308 mm	ø 108 x 79 mm
Operating Temperature	w-40°C ~ 60°C (-40°F ~ 140°F)	-40°C ~ 60°C (-40°F ~ 140°F)	-10°C ~ 50°C (14°F ~ 122°F)	-10°C ~ 50°C (14°F ~ 122°F)	-40°C ~ 60°C (-40°F ~ 140°F)	-40°C ~ 60°C (-40°F ~ 140°F)	-20°C ~ 50°C (-4°F ~ 122°F)
NDAA Compliance Product	•	•	•	•	•	•	•

* All specifications are subject to change without notice.



Network Camera

2MP Cameras

Comprehensive Security with VIVOTEK 67-v2 Series



Easy to Install

2MP VIVOTEK 67-v2 series of products include mounting brackets that work with most standard junction boxes as well as Wi-Fi camera setup via a smartphone.



AI-Powered Video Analytics (w/ license purchase)

VIVOTEK's Smart VCA is a suite of multiple analytics that provide faster and more accurate detection for various scenarios.



Smart Motion Detection

With accurate precision to detect human activity only, while also intelligently ignoring background changes in a given scene, VIVOTEK's SMD greatly minimizes the number of false alarms.



Wi-Fi Installation

Use your smartphone to connect via Wi-Fi for easy camera setup.





FD9367-EHTV-v2



FD9167-HT-v2



IB9367-EHT-v2

2MP Cameras	Outdoor Dome	Indoor Dome	Bullet
Camera Features			
Sensor Type	1/2.8" progressive CMOS	1/2.8" progressive CMOS	1/2.8" progressive CMOS
Lens Type/ Focal Length/ F-number	Motorized/ 2.7 ~ 13.5 mm/ F1.4 ~ F2.8	Motorized/ 2.7 ~ 13.5 mm/ F1.4 ~ F2.8	Motorized/ 2.7 ~ 13.5 mm/ F1.4 ~ F2.8
Field of View	110° ~ 33° (H) 55° ~ 18° (V)	110° ~ 33° (H) 55° ~ 18° (V)	105° ~ 33° (H) 55° ~ 18° (V)
Day/ Night	•	•	•
IR Illuminators	50 m, IR LED*4	50 m, IR LED*4	50 m, IR LED*4
Min. Illumination	0.035 lux @ F1.4 (Color) <0.005 lux @ F1.4 (B/W) 0 Lux with IR illumination on	0.035 lux @ F1.4 (Color) <0.005 lux @ F1.4 (B/W) 0 Lux with IR illumination on	0.035 lux @ F1.4 (Color) <0.005 lux @ F1.4 (B/W) 0 Lux with IR illumination on
Max. Resolution/ Frame Rate	60 fps @ 1920x1080	60 fps @ 1920x1080	60 fps @ 1920x1080
WDR Technology*	WDR Pro	WDR Pro	WDR Pro
On-board Storage	microSD/SDHC/SDXC card slot	microSD/SDHC/SDXC card slot	microSD/SDHC/SDXC card slot
Video/ Audio/ Network			
Video Compression	Triple-Codec (H.265/H.264/MJPEG)	Triple-Codec (H.265/H.264/MJPEG)	Triple-Codec (H.265/H.264/MJPEG)
Audio	Two-way Audio (Full duplex)	Two-way Audio (Full duplex)	Two-way Audio (Full duplex)
Digital Input/ Output	1/1	1/1	1/1
ONVIF	Profile G/S/T	Profile G/S/T	Profile G/S/T
Solution Integration			
Security	Secure Boot, Signed Firmware, Trend Micro IoT Security	Secure Boot, Signed Firmware, Trend Micro IoT Security	Secure Boot, Signed Firmware, Trend Micro IoT Security
VCA	Smart Motion Detection, Smart VCA (optional)	Smart Motion Detection, Smart VCA (optional)	Smart Motion Detection, Smart VCA (optional)
General			
Power Input/ Consumption	AC 24V (Optional)/ DC 12V/ PoE Max. 9 W	AC 24V (Optional)/ DC 12V/ PoE Max. 9 W	AC 24V (Optional)/ DC 12V/ PoE Max. 10.77 W
Housing	IP66, IP67, IK10, NEMA 4X	-	IP66, IP67, IK10, NEMA 4X
Dimensions	ø 174 x 123 mm	ø 174 x 123 mm	ø 153 x 288 mm
Operating Temperature	-40°C ~ 60°C (-40°F ~ 140°F)	-10°C ~ 50°C (14°F ~ 122°F)	-40°C ~ 60°C (-40°F ~ 140°F)
NDA Compliance Product	•	•	•

* All specifications are subject to change without notice.



Network Camera

Box Cameras

Customizable, High Resolution Surveillance



High Resolution

5 and 3 Megapixel options to capture highly detailed video.



Changeable Lenses

Change lenses as required to capture the most details.



SNV

Supreme Night Vision (SNV) for great low light performance.





Model	NEW IP9181-HT-v2	IP9181-H	IP9171-HP
Box Cameras	5 Megapixel		3 Megapixel
Camera Features			
Sensor Type	1/2.8" Progressive CMOS	1/1.8" Progressive CMOS	1/2.8" Progressive CMOS
Lens Type/ Focal Length/ F-number	Remote Back Focus/ 2.8 ~ 8.5 mm/ F1.2	Remote Back Focus/ 4.1 ~ 9 mm/ F1.6 ~ F2.4	Remote Back Focus/ 2.8 ~ 8 mm/ F1.2 ~ F1.95
Field of View	107° ~ 36° (H) 77° ~ 27° (V)	90° ~ 46° (H) 68° ~ 35° (V)	114° ~ 51° (H) 84° ~ 39° (V)
Day/ Night	•	•	•
IR Illuminators	-	-	-
Min. Illumination	0.01 lux @ F1.2 (Color) 0.005 lux @ F1.2 (B/W)	0.07 lux @ F1.6 (Color) 0.001 lux @ F1.6 (B/W)	0.01 lux @ F1.2 (Color) 0.001 lux @ F1.2 (B/W)
Max. Resolution/ Frame Rate	30 fps @ 2560x1920 30 fps @ 2880x1632	30 fps @ 2560x1920 60 fps @ 1920x1080	30 fps @ 2048x1536
WDR Technology*	WDR Pro	WDR Pro	WDR Pro
On-board Storage	microSD/ SDHC/ SDXC card slot	microSD/ SDHC/ SDXC card slot	microSD/SDHC/SDXC card slot
Video/ Audio/ Network			
Video Compression	Triple-Codec (H.265/ H.264/ MJPEG)	Triple-Codec (H.265/ H.264/ MJPEG)	Triple-Codec (H.265/H.264/MJPEG)
Audio	Two-way Audio (Full duplex)	Two-way Audio (Full duplex)	Two-way Audio (Full duplex)
Digital Input/ Output	2/2	3/1	3/1
ONVIF	Profile G/S/T	Profile G/S	Profile G/S
Solution Integration			
Security	Secure Boot, Signed Firmware, Trend Micro IoT Security	-	-
VCA	Smart Motion Detection, Smart VCA (optional)	-	-
General			
Power Input/ Consumption	AC 24V/ DC 12V/ PoE Max. 15 W	AC 24V/ DC 12V/ PoE Max. 9.7 W	AC 24V/ DC 12V/ PoE Max. 8.6 W
Housing	-	-	-
Dimensions	155 x 70 x 61 mm (w/o lens) 210 x 70 x 66 mm (w/ lens)	210 x 70 x 63 mm	210 x 70 x 63 mm
Operating Temperature	-10°C ~ 60°C (14°F ~ 140°F)	-10°C ~ 50°C (14°F ~ 122°F)	-10°C ~ 50°C (14°F ~ 122°F)
NDA Compliance Product	•	-	-

* All specifications are subject to change without notice.



Network Camera

Speed Dome Cameras

Great Video Quality PTZ Solutions for both Indoors and Outdoors



Smart Tracking Advanced

Innovative deep-learning algorithm to increase accuracy when tracking people or vehicles in motion.



Outdoor Ready

Designed for outdoor environments with IP66 and IK10 certification plus NEMA 4X.



Camera Link

Enabled to work with Camera Link spotter cameras to effortlessly capture event details.



Airport



Port



Model

NEW

SD9394-EHL

SD9384-EHL

SD9368-EHL

SD9161-H-v2

Speed Domes	8 MP Outdoor	5 MP Outdoor	2 MP Outdoor	2 MP Indoor
Camera Features				
Sensor Type	1/1.8" Progressive CMOS	1/2.8" Progressive CMOS	1/2.8" Progressive CMOS	1/2.8" Progressive CMOS
Lens Type/ Focal Length/ F-number	32x Optical Zoom Auto Focus/ 6.5 ~ 212 mm/ F1.4 ~ F4.9	30x Optical Zoom Auto Focus/ 4.94 ~ 148.24 mm/ F1.3~4.6	40x Optical Zoom Auto Focus/ 4.25 ~ 170 mm/ F1.6 ~ F4.95	10x Optical Zoom Auto Focus/ 5.1 ~ 51 mm/ F1.6 ~ F1.8
Field of View	63.5° ~ 2.0° (H) 37.4° ~ 1.1° (V)	54.1° ~ 1.9° (H) 41.2° ~ 1.4° (V)	65.7° ~ 1.88° (H) 39.39° ~ 1.09° (V)	55.2° ~ 7.1° (H) 31.8° ~ 4.1° (V)
Day/ Night	•	•	•	•
IR Illuminators	200m, IR LED*8	200m, IR LED*8	250 m, IR LED*8	-
Min. Illumination	0.03 lux @ F1.4 (Color) <0.005 lux @ F1.4 (B/W) 0 lux with IR illumination on	0.03 lux @ F1.3 (Color) <0.005 lux @ F1.3 (B/W) 0 lux with IR illumination on	0.04 lux @ F1.6 (Color) <0.005 lux @ F1.6 (B/W) 0 lux with IR illumination on	0.14 lux @ F1.6 (Color) 0.005 lux @ F1.6 (B/W)
Max. Resolution/ Frame Rate	30 fps @ 3840 x 2160	30 fps @ 2560x1920	60 fps @ 1920x1080	60 fps @ 1920x1080
WDR Technology*	WDR Pro	WDR Pro	WDR Pro	WDR Pro
On-board Storage	microSD/SDHC/SDXC card slot	microSD/ SDHC/ SDXC card slot	microSD/ SDHC/ SDXC card slot	microSD/ SDHC/ SDXC card slot
Video/ Audio/ Network				
Video Compression	Triple-Codec (H.265/H.264/MJPEG)	Triple-Codec (H.265/ H.264/ MJPEG)	Triple-Codec (H.265/ H.264/ MJPEG)	Triple-Codec (H.265/ H.264/ MJPEG)
Audio	Two-way Audio (Full duplex)	Two-way Audio (Full duplex)	Two-way Audio (Full duplex)	Two-way Audio (Full duplex)
Digital Input/ Output	44958	2/1	2/1	2/1
ONVIF	Profile G/S/T	Profile G/S/T	Profile G/S/T	Profile G/S/T
Solution Integration				
Security	Secure Boot, Signed Firmware, Trend Micro IoT Security	Secure Boot, Signed Firmware, Trend Micro IoT Security	Secure Boot, Signed Firmware, Trend Micro IoT Security	Secure Boot, Signed Firmware, Trend Micro IoT Security
VCA	Smart Tracking Advanced, Vision OA	Smart Tracking Advanced, Vision OA	Smart Tracking Advanced, Vision OA	Smart Tracking Advanced, Vision OA
General				
Power Input/ Consumption	AC 24V/ DC 48V/ IEEE 802.3 bt PoE Max. 51 W	AC 24V/ DC 48V/ IEEE 802.3 bt PoE Max. 51 W	AC 24V/ DC 48V/ IEEE 802.3 bt PoE Max. 51 W	AC 24V/ DC 24V/ IEEE 802.3at PoE Max. 17 W
Housing	IP66, IK10, NEMA 4X	IP66, IK10, NEMA 4X	IP66, IK10, NEMA 4X	-
Dimensions	ø 256 x 336 mm	ø 256 x 336 mm	ø 256 x 336 mm	ø 172 x 157 mm
Operating Temperature	-40°C ~ 55°C (-40°F ~ 131°F)	-40°C ~ 60°C (-40°F ~ 140°F)	-40°C ~ 60°C (-40°F ~ 140°F)	-10°C ~ 55°C (14°F ~ 131°F)
NDAA Compliance Product	•	•	•	•

* All specifications are subject to change without notice.

BACK TO CONTENTS



Network Camera

Specialty Cameras

Specialized Coverage with distinct VIVOTEK Models



180° Panoramic Views

With 2 sensors stitched together, the MS9390-HV panoramic IP camera provides excellent 180° coverage of medium sized areas.



Split Type Camera System

VC9101 's split-type camera system can support one camera unit (4MP pinhole or 5MP fisheye) for the ultimate discretion. Great for use in ATMs, vending machines, and more.





Model

NEW

MS9390-HV-v2

VC9101

	8 Megapixel / 180° Panoramic	5 Megapixel / Split Type Camera
Camera Features		
Sensor Type	1/2.7" Progressive CMOS	1/2.7" Progressive CMOS
Lens Type/ Focal Length/ F-number	Fixed/ 2.8 mm/ F1.2	Pinhole CU9171-H(F): Fixed/ 3.7mm/ F2.5 Fisheye CU9183-H(F): Fixed/ 1.22mm/ F2.0
Field of View	180° (H) 50° (V)	CU9171-H(F): 93° (H), 48° (V) CU9183-H(F): 180° (H), 180° (V)
Day/ Night	•	-
IR Illuminators	20 m	-
Min. Illumination	0.05 lux @ F1.2 (Color) 0.01 lux @ F1.2 (B/W) 0 lux with IR illumination on	CU9171-H(F): 0.045 lux @ F2.5 (Color) CU9183-H(F): 0.035 lux @ F2.0 (Color)
Max. Resolution/ Frame Rate	30 fps @ 4864x1632	CU9171-H(F): 30 fps @ 2688x1520 CU9183-H(F): 30 fps @ 1920x1920
WDR Technology*	WDR Pro	WDR Pro
On-board Storage	microSD/ SDHC/ SDXC card slot	microSD/ SDHC/ SDXC card slot
Video/ Audio/ Network		
Video Compression	Triple-Codec (H.265/ H.264/ MJPEG)	Triple-Codec (H.265/ H.264/ MJPEG)
Audio	One-way Audio	Two-way Audio (Full duplex)
Digital Input/ Output	-	1/1
ONVIF	Profile G/S/T	Profile G/S/T
Solution Integration		
Security	Secure Boot, Signed Firmware, Trend Micro IoT Security	Secure Boot, Signed Firmware, Trend Micro IoT Security
VCA	Smart Motion Detection, Smart VCA (optional)	Smart Motion Detection, Face Detection
General		
Power Input/ Consumption	PoE/ Max. 20 W	DC 12V/ PoE Max. 8.5 W
Housing	IP66, IK10	-
Dimensions	165 x 112 x 97 mm (w/o sunshield) 165 x 119 x 100 mm (w/ sunshield)	105 x 84 x 30 mm
Operating Temperature	-40°C ~ 55°C (-40°F ~ 131°F)	-10°C ~ 50°C (14°F ~ 122°F)
NDAA Compliance Product	•	•

* All specifications are subject to change without notice.

BACK TO CONTENTS



Network Camera

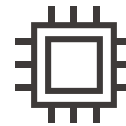
COMPETITIVE Series

Cost effective professional surveillance, good image quality.



Large Variety

Many models and resolutions to choose from for all your surveillance needs.



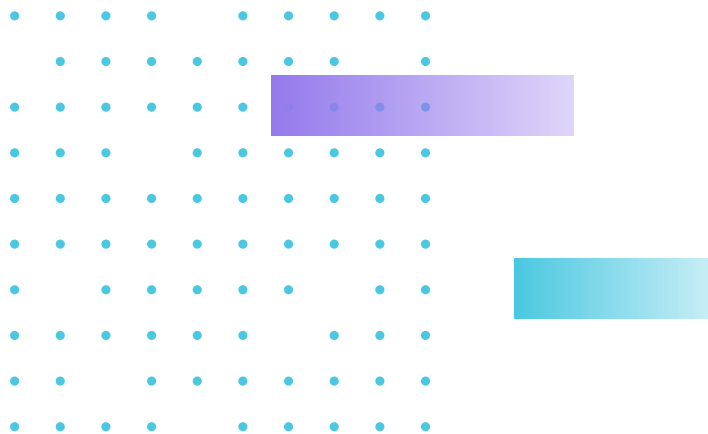
Small Yet Powerful

Focused mainly on surveillance only, less extra parts allow for smaller, less intrusive housings.



Cost Effective

Lower costs to provide more competitive offerings.

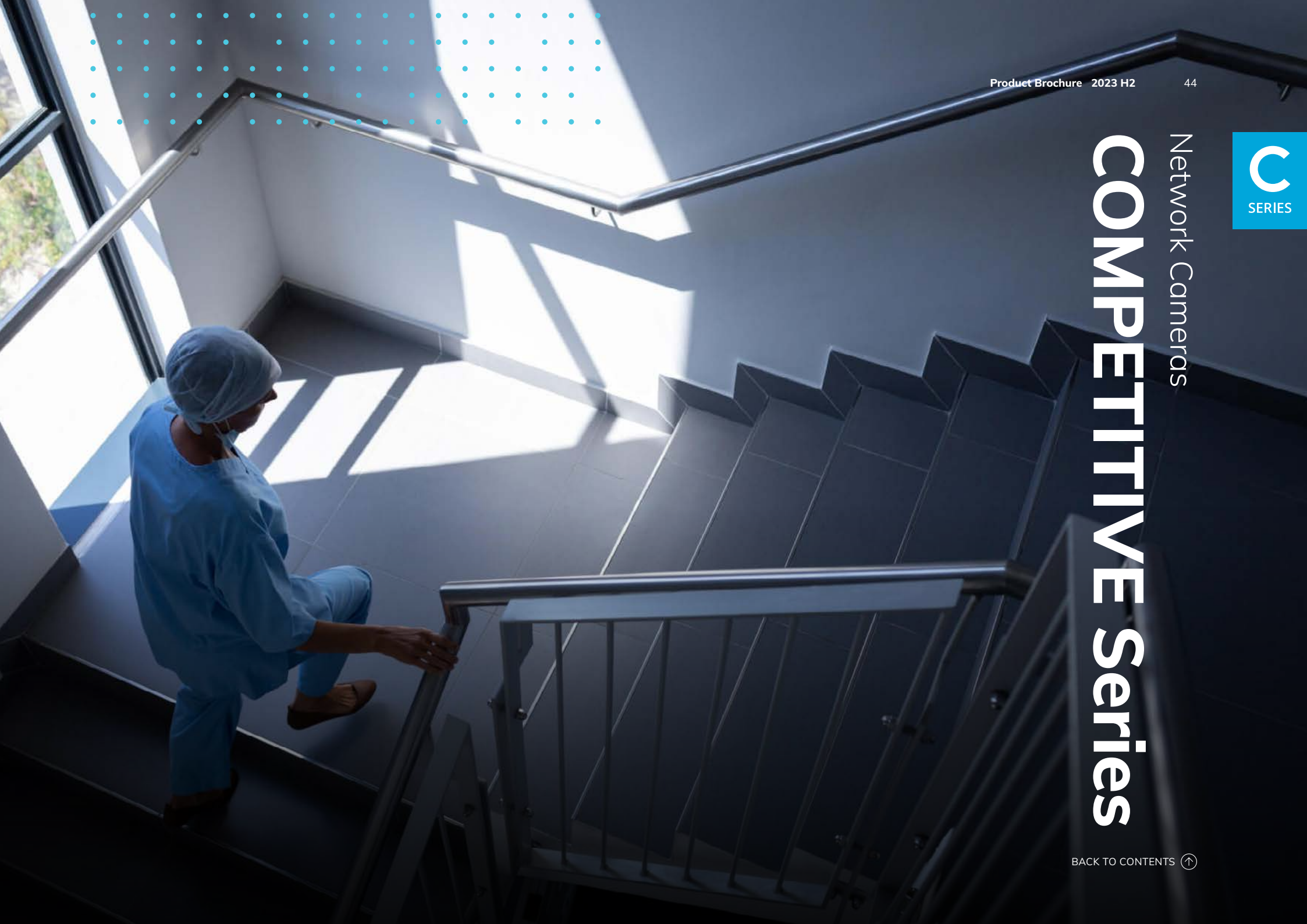




Network Cameras

COMPETITIVE Series

[BACK TO CONTENTS](#) 





Model	FD9388-HTV	FD9368-HTV	IB9388-HT	IB9368-HT	IT9388-HT
SMP 88 / 2MP 68 Series	Outdoor Dome		Bullet		Turret
Camera Features					
Sensor Type	1/2.7" Progressive CMOS	1/2.9" Progressive CMOS	1/2.7" Progressive CMOS	1/2.9" Progressive CMOS	1/2.7" Progressive CMOS
Lens Type/ Focal Length/ F-number	Motorized/ 2.8 ~ 12 mm/ F1.4 ~ F2.8	Motorized/ 2.8 ~ 12 mm/ F1.4 ~ F2.8	Motorized/ 2.8 ~ 12 mm/ F1.4 ~ F2.8	Motorized/ 2.8 ~ 12 mm/ F1.4 ~ F2.8	Motorized/ 2.8 ~ 12 mm/ F1.4 ~ F2.8
Field of View	90° ~ 30° (H) 65° ~ 23° (V)	93° ~ 32° (H) 50° ~ 18° (V)	90° ~ 30° (H) 65° ~ 23° (V)	93° ~ 32° (H) 50° ~ 18° (V)	90° ~ 30° (H) 65° ~ 23° (V)
Day/ Night	•	•	•	•	•
IR Illuminators	30 m, IR LED*2	30 m, IR LED*2	30 m, IR LED*2	30 m, IR LED*2	30 m, IR LED*2
Min. Illumination	0.035 lux @ F1.4 (Color) <0.005 lux @ F1.4 (B/W) 0 lux with IR illumination on	0.055 lux @ F1.4 (Color) <0.005 lux @ F1.4 (B/W) 0 lux with IR illumination on	0.035 lux @ F1.4 (Color) <0.005 lux @ F1.4 (B/W) 0 lux with IR illumination on	0.055 lux @ F1.4 (Color) <0.005 lux @ F1.4 (B/W) 0 lux with IR illumination on	0.035 lux @ F1.4 (Color) <0.005 lux @ F1.4 (B/W) 0 lux with IR illumination on
Max. Resolution/ Frame Rate	20 fps @ 2560x1920	30 fps @ 1920x1080	20 fps @ 2560x1920	30 fps @ 1920x1080	20 fps @ 2560x1920
WDR Technology*	WDR Pro	WDR Pro	WDR Pro	WDR Pro	WDR Pro
On-board Storage	microSD/SDHC/SDXC card slot	microSD/SDHC/SDXC card slot	microSD/SDHC/SDXC card slot	microSD/SDHC/SDXC card slot	microSD/SDHC/SDXC card slot
Video/ Audio/ Network					
Video Compression	Triple-Codec (H.265/H.264/MJPEG)	Triple-Codec (H.265/H.264/MJPEG)	Triple-Codec (H.265/H.264/MJPEG)	Triple-Codec (H.265/H.264/MJPEG)	Triple-Codec (H.265/H.264/MJPEG)
Audio	One-way Audio	One-way Audio	-	-	One-way Audio
Digital Input/ Output	-	-	-	-	-
ONVIF	Profile G/S/T	Profile G/S/T	Profile G/S/T	Profile G/S/T	Profile G/S/T
Solution Integration					
Security	Trend Micro IoT Security	Trend Micro IoT Security	Trend Micro IoT Security	Trend Micro IoT Security	Trend Micro IoT Security
VCA	-	-	-	-	-
General					
Power Input/ Consumption	PoE/ Max. 12.95 W	PoE/ Max. 12.95 W	PoE/ Max. 12.95 W	PoE/ Max. 12.95 W	PoE/ Max. 9.8 W
Housing	IP66, IK10	IP66, IK10	IP66, IK10 (housing)	IP66, IK10 (housing)	IP66, IK10 (Housing)
Dimensions	ø 133 x 104 mm	ø 133 x 104 mm	85 x 85 x 214.5 mm	85 x 85 x 214.5 mm	ø 120 x 91 mm
Operating Temperature	-30°C ~ 60°C (-22°F ~ 140°F)	-30°C ~ 60°C (-22°F ~ 140°F)	-30°C ~ 60°C (-22°F ~ 140°F)	-30°C ~ 60°C (-22°F ~ 140°F)	-30°C ~ 60°C (-22°F ~ 140°F)
NDA Compliance Product	•	•	•	•	•

* All specifications are subject to change without notice.



Model	FD9380-H	IB9380-H	IT9380-H	IT9360-H
5MP 80/2MP 60 Series	Outdoor Dome	Bullet	Turret	
Camera Features				
Sensor Type	1/2.7" Progressive CMOS	1/2.7" Progressive CMOS	1/2.7" Progressive CMOS	1/2.9" Progressive CMOS
Lens Type/ Focal Length/ F-number	Fixed/ 2.8 mm or 3.6 mm / F2.0	Fixed/ 3.6 mm/ F2.0	Fixed/ 2.8 mm or 3.6mm /F2.0	Fixed/ 2.8 mm or 3.6 mm/ F2.0
Field of View	103° (H), 76° (V) [FD9380-H (2.8mm)] 76° (H), 59° (V) [FD9380-H (3.6mm)]	76° (H) 59° (V)	103° (H), 76° (V) [IT9380-H (2.8mm)] 76° (H), 59° (V) [IT9380-H (3.6mm)]	109° (H), 59° (V) [IT9360-H (2.8mm)] 81° (H), 44° (V) [IT9360-H (3.6mm)]
Day/Night	•	•	•	•
IR Illuminators	30 m, IR LED*2	30 m, IR LED*2	30 m, IR LED*2	30 m, IR LED*2
Min. Illumination	0.03 lux @ F2.0 (Color) <0.005 lux @ F2.0 (B/W) 0 lux with IR illumination on	0.03 lux @ F2.0 (Color) <0.005 lux @ F2.0 (B/W) 0 lux with IR illumination on	0.03 lux @ F2.0 (Color) <0.005 lux @ F2.0 (B/W) 0 lux with IR illumination on	0.065 lux @ F2.0 (Color) <0.005 lux @ F2.0 (B/W) 0 lux with IR illumination on
Max. Resolution/ Frame Rate	20 fps @ 2560x1920	20 fps @ 2560x1920	20 fps @ 2560x1920	30 fps @ 1920x1080
WDR Technology*	WDR Pro	WDR Pro	WDR Pro	WDR Pro
On-board Storage	microSD / SDHC / SDXC card slot	microSD / SDHC / SDXC card slot	microSD / SDHC / SDXC card slot	microSD / SDHC / SDXC card slot
Video/ Audio/ Network				
Video Compression	Triple-Codec (H.265/H.264/MJPEG)	Triple-Codec (H.265/H.264/MJPEG)	Triple-Codec (H.265/H.264/MJPEG)	Triple-Codec (H.265/H.264/MJPEG)
Audio	-	-	One-way Audio	One-way Audio
Digital Input/ Output	-	-	-	-
ONVIF	Profile G/S/T	Profile G/S/T	Profile G/S/T	Profile G/S/T
Solution Integration				
Security	Trend Micro IoT Security	Trend Micro IoT Security	Trend Micro IoT Security	Trend Micro IoT Security
VCA	-	-	-	-
General				
Power Input/ Consumption	PoE/ Max. 6.49 W	PoE/ Max. 6.49 W	PoE/ Max. 6 W	PoE/ Max. 6 W
Housing	IP66, IK10 (housing)	IP66, IK10 (housing)	IP66, IK10 (housing)	IP66, IK10 (housing)
Dimensions	ø 117 x 90 mm	ø 91 x 177 mm	ø 105 x 83 mm	ø 105 x 83 mm
Operating Temperature	-30°C ~ 60°C (-22°F ~ 140°F)	-30°C ~ 60°C (-22°F ~ 140°F)	-20°C ~ 60°C (-4°F ~ 140°F)	-20°C ~ 60°C (-4°F ~ 140°F)
NDA Compliance Product	•	•	•	•

* All specifications are subject to change without notice.



Model	FD9366-HV	FD9166-HN
2MP Mini Dome 66 Series	Outdoor Dome	Indoor Dome
Camera Features		
Sensor Type	1/2.9" Progressive CMOS	1/2.9" Progressive CMOS
Lens Type/ Focal Length/ F-number	Fixed/ 2.8 mm/ F1.8 Fixed/ 3.6mm/ F2.0	Fixed/ 2.8 mm/ F1.8 Fixed/ 3.6mm/ F2.0
Field of View	108° (H), 60° (V) [FD9366-HV (2.8mm)] 89° (H), 47° (V) [FD9366-HV (3.6mm)]	109° (H), 59° (V) [FD9166-HN (2.8mm)] 89° (H), 47° (V) [FD9166-HN (3.6mm)]
Day/ Night	•	•
IR Illuminators	20 m, IR LED*2	10 m, IR LED*4
Min. Illumination	FD9366-HV (2.8mm): 0.13 lux @ F1.8 (Color)/ 0.01 lux @ F1.8 (B/W) 0 lux with IR illumination on FD9366-HV (3.6mm): 0.15 lux @ F2.0 (Color)/ 0.01 lux @ F2.0 (B/W) 0 lux with IR illumination on	FD9166-HN (2.8mm): 0.07 lux @ F1.8 (Color)/ 0.01 lux @ F1.8 (B/W) 0 lux with IR illumination on FD9166-HN (3.6mm): 0.16 lux @ F2.0 (Color)/ 0.01 lux @ F2.0 (B/W) 0 lux with IR illumination on
Max. Resolution/ Frame Rate	30 fps @ 1920x1080	30 fps @ 1920x1080
WDR Technology*	WDR Pro	WDR Pro
On-board Storage	microSD/ SDHC/ SDXC card slot	microSD/ SDHC/ SDXC card slot
Video/ Audio/ Network		
Video Compression	Triple-Codec (H.265/ H.264/ MJPEG)	Triple-Codec (H.265/ H.264/ MJPEG)
Audio	One-way Audio	One-way Audio
Digital Input/ Output	1/1	1/0
ONVIF	Profile G/S/T	Profile G/S/T
Solution Integration		
Security	Trend Micro IoT Security	Trend Micro IoT Security
VCA	-	-
General		
Power Input/ Consumption	PoE/ Max. 5.5 W	PoE/ Max. 5.5 W
Housing	IP66, IP67, IK10, NEMA 4X	-
Dimensions	98 x 54 x 111 mm	ø 90 x 50 mm
Operating Temperature	-25°C ~ 60°C (-13°F~ 140°F)	-10°C ~ 55°C(14°F~ 131°F)
NDA Compliance Product	•	•

* All specifications are subject to change without notice.



Model	FD9369	IB9369	FD9182-H
2MP Smart Motion 69 Series	Outdoor Dome	Bullet	Recessed - 5 Megapixel
Camera Features			
Sensor Type	1/3.1" Progressive CMOS	1/3.1" Progressive CMOS	1/2.7" progressive CMOS
Lens Type/ Focal Length/ F-number	Fixed/ 2.8 mm / F2.0	Fixed/ 2.8 mm/ F2.0 Fixed/ 3.6 mm/ F2.2	Fixed/ 2.8 mm/ F2.0
Field of View	116° (H) 65° (V)	118° (H), 65° (V) [IB9369 (2.8 mm)] 90° (H), 49° (V) [IB9369 (3.6 mm)]	103° (H) 76° (V)
Day/ Night	•	•	•
IR Illuminators	30 m, IR LED*1	30 m, IR LED*1	-
Min. Illumination	0.08 lux @ F2.0 (Color) <0.005 lux @ F2.0 (B/W) 0 lux with IR illumination on	IB9369 (2.8 mm): 0.08 lux @ F2.0 (Color)<0.005 lux @ F2.0 (B/W)0 lux with IR illumination on IB9369 (3.6 mm): 0.1 lux @ F2.2 (Color)<0.005 lux @ F2.2 (B/W)0 lux with IR illumination on	0.03 lux @ F2.0 (Color) <0.005 lux @ F2.0 (B/W)
Max. Resolution/ Frame Rate	30 fps @ 1920x1080	30 fps @ 1920x1080	20 fps @ 2560x1920
WDR Technology*	WDR Enhanced	WDR Enhanced	WDR Pro
On-board Storage	microSD/ SDHC/ SDXC card slot	microSD/ SDHC/ SDXC card slot	microSD/SDHC/SDXC card slot
Video/ Audio/ Network			
Video Compression	Triple-Codec (H.265/ H.264/ MJPEG)	Triple-Codec (H.265/ H.264/ MJPEG)	Triple-Codec (H.265/H.264/MJPEG)
Audio	One-way Audio	-	One-way Audio
Digital Input/ Output	-	-	-
ONVIF	Profile G/S/T	Profile G/S/T	Profile G/S/T
Solution Integration			
Security	-	-	Trend Micro IoT Security
VCA	-	-	-
General			
Power Input/ Consumption	PoE: Max. 6 W DC 12V: Max. 5.1 W	PoE: Max. 6 W DC 12V: Max. 5.1 W	PoE/ Max. 3.6 W
Housing	IP66, IK10 (housing)	IP66, IK10 (housing)	IK10(housing)
Dimensions	ø 110 x 85 mm	ø 91 x 182 mm	ø 82 x 122 mm
Operating Temperature	-30°C ~ 55°C (-22°F ~ 131°F)	-30°C ~ 55°C (-22°F ~ 131°F)	-10°C ~ 50°C (14°F ~ 140°F)
NDA Compliance Product	•	•	•

* All specifications are subject to change without notice.



FE9380-HV



NEW

FE9180-H-v2

360° Panoramic Cameras	360° Fisheye Cameras - 5 Megapixel	
Camera Features		
Sensor Type	1/2.7" Progressive CMOS	1/2.7" Progressive CMOS
Lens Type/ Focal Length/ F-number	Fixed/ 1.16 mm/ F2.25	Fixed/ 1.16 mm/ F2.25
Field of View	180° (H) 180° (V)	180° (H) 180° (V)
Day/ Night	•	•
IR Illuminators	10 m, IR LED*4	-
Min. Illumination	0.05 lux @ F2.25 (Color) <0.005 lux @ F2.25 (B/W) 0 lux with IR illumination on	0.05 lux @ F2.25 (Color) <0.005 lux @ F2.25 (B/W)
Max. Resolution/ Frame Rate	30 fps @ 1920x1920	30 fps @ 1920x1920
WDR Technology*	WDR Pro	WDR Pro
On-board Storage	microSD/SDHC/SDXC card slot	microSD/SDHC/SDXC card slot
Video/ Audio/ Network		
Video Compression	Triple-Codec (H.265/H.264/MJPEG)	Triple-Codec (H.265/H.264/MJPEG)
Audio	One-way Audio	One-way Audio
Digital Input/ Output	-	-
ONVIF	Profile G/S/T	Profile G/S/T
Solution Integration		
Security	Trend Micro IoT Security	Trend Micro IoT Security
VCA	-	-
General		
Power Input/ Consumption	PoE/ Max. 12 W	PoE/ Max. 4.6 W
Housing	IP66, IK10	-
Dimensions	ø 150 x 68.2 mm	ø 94 x 35 mm
Operating Temperature	-30°C ~ 60°C (-22°F ~ 140°F)	-10°C ~ 50°C (14°F ~ 122°F)
NDAA Compliance Product	•	•

* All specifications are subject to change without notice.

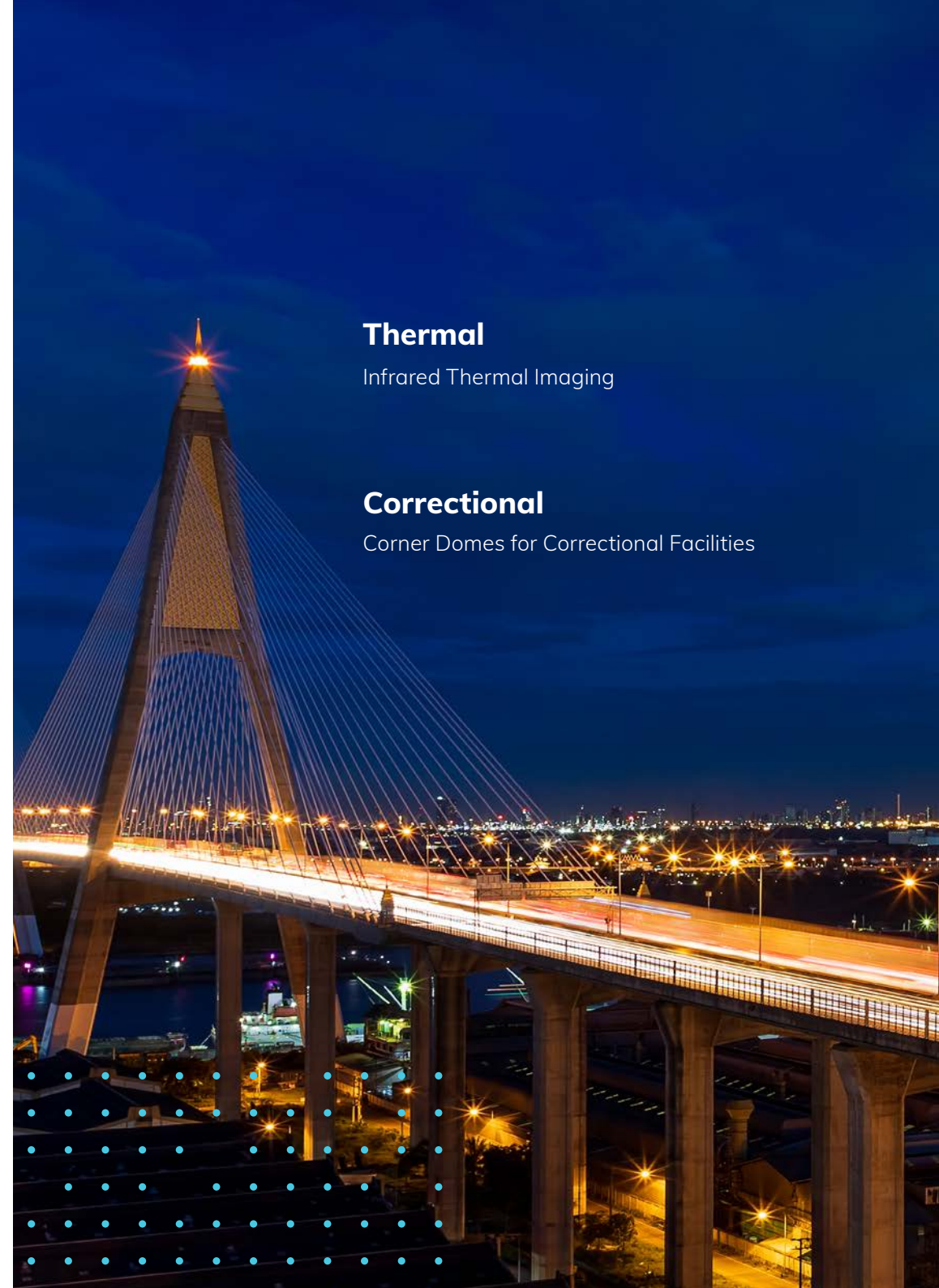
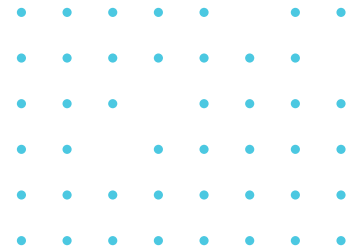


Model	CC9380-HV	CC9381-HV	CC9160-H	CC9160-H(HS)
180° Panoramic Cameras	5 Megapixel		2 Megapixel	
Camera Features				
Sensor Type	1/2.7" Progressive CMOS	1/2.7" Progressive CMOS	1/2.8" Progressive CMOS	1/2.8" Progressive CMOS
Lens Type/ Focal Length/ F-number	Fixed/ 1.45 mm/ F2.2	Fixed / 1.45 mm/ F2.2	Fixed/ 1.66 mm/ F1.95	Fixed/ 1.66 mm/ F1.95
Field of View	180° (H) 120° (V)	180° (H) 120° (V)	180° (H) 100° (V)	180° (H) 100° (V)
Day/ Night	•	•	-	-
IR Illuminators	-	15 m	-	-
Min. Illumination	0.11 lux @ F2.2 (Color) 0.01 lux @ F2.2 (B/W)	0.11 lux @ F2.2 (Color) 0.01 lux @ F2.2 (B/W) 0 lux with IR illumination on	0.03 lux @ F1.95 (Color)	0.03 lux @ F1.95 (Color)
Max. Resolution/ Frame Rate	20 fps @ 2560x1920 (WDR on) 30 fps @ 2560x1920 (WDR off)	20 fps @ 2560x1920 (WDR on) 30 fps @ 2560x1920 (WDR off)	30 fps @ 1920x1080	30 fps @ 1920x1080
WDR Technology*	WDR Pro	WDR Pro	WDR Pro	WDR Pro
On-board Storage	microSD/SDHC/SDXC card slot	microSD/SDHC/SDXC card slot	microSD/SDHC/SDXC card slot	microSD/SDHC/SDXC card slot
Video/ Audio/ Network				
Video Compression	Triple-Codec (H.265/H.264/MJPEG)	Triple-Codec (H.265/H.264/MJPEG)	Triple-Codec (H.265/H.264/MJPEG)	Triple-Codec (H.265/H.264/MJPEG)
Audio	One-way Audio	One-way Audio	One-way Audio	-
Digital Input/ Output	-	-	-	-
ONVIF	Profile G/S/T	Profile G/S/T	Profile G/S/T	Profile G/S/T
Solution Integration				
Security	Trend Micro IoT Security	Trend Micro IoT Security	Trend Micro IoT Security	Trend Micro IoT Security
VCA	-	-	-	-
General				
Power Input/ Consumption	PoE/ Max. 5 W	PoE/ Max. 9.12 W	PoE/ Max. 5 W	PoE/ Max. 5 W
Housing	IP66, IK10	IP66, IK10	-	-
Dimensions	115 x 65 x 59 mm	160 x 72 x 60 mm (Dome to rear panel) 39 mm (Flat to rear panel)	147 x 61 x 41 mm (with bracket)	868 x 49.3 x 28 mm
Operating Temperature	-30°C ~ 50°C (-22°F ~ 122°F)	-30°C ~ 50°C (-22°F ~ 122°F)	-10°C ~ 45°C (14°F ~ 113°F)	-10°C ~ 45°C (14°F ~ 113°F)
NDA Compliance Product	•	•	•	•

* All specifications are subject to change without notice.

Application Specific Solutions

Network Surveillance Products Designed for Distinct User Scenarios.



Thermal

Infrared Thermal Imaging

Correctional

Corner Domes for Correctional Facilities

Counting

People Counting Solutions for Retail & Transportation

Facial Recognition

Hands Free Solution for Access Control

Network Audio

Audio for Security

Media Converters

Effortless Solutions for Converting Media

Application Solution

Thermal Bullet Cameras

Infrared Thermal Imaging



Long Distance Monitoring

VIVOTEK thermal cameras offer different lens options to allow users to easily adapt to different detection scenarios.



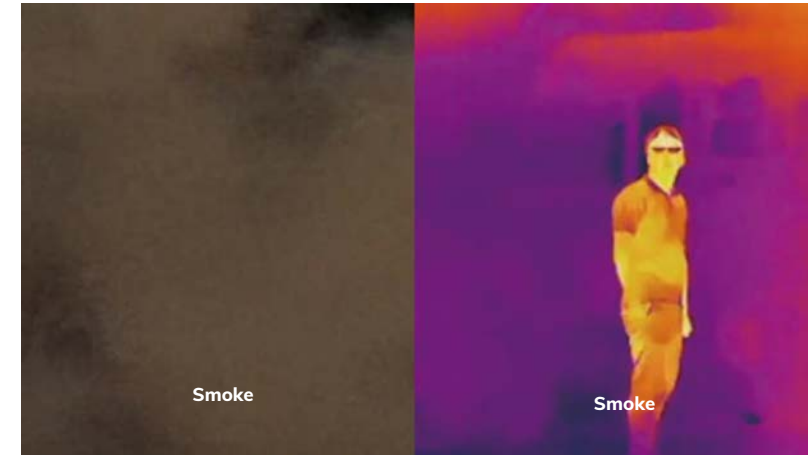
Robust Design for Outdoor Environments

Cameras are IP66/IP67 rated and equipped with NEMA 4X housings. The unique lens guard design provides extra protection from tampering and objects.



Video Analytics for Perimeter Protection

VIVOTEK thermal cameras, with video analytic features such as line crossing and field detection, make perimeter protection both simple and efficient.



Normal Camera

Thermal Camera





Thermal Camera



TB9330-E



TB9331-E

Model		TB9330-E		TB9331-E
Thermal Bullet Cameras				
Camera Features				
Sensor Type		Uncooled Vox Infrared Detector		Uncooled Vox Infrared Detector
Lens Type/ Focal Length/ F-number		Fixed Thermal Lens/ 8.8 mm,19 mm 35 mm, 50 mm/ F1.0		Fixed Thermal Lens/ 8.8 mm,19 mm 35 mm, 50 mm/ F1.0
Field of View		38.3° (H), 26.1° (V) [TB9330-E (8.8mm)] 18.3° (H), 12.3° (V) [TB9330-E (19mm)] 10° (H), 6.7° (V) [TB9330-E (35mm)] 7° (H), 4.7° (V) [TB9330-E (50mm)]		69.6° (H), 49.7° (V) [TB9331-E (8.8mm)] 35.7° (H), 24.2° (V) [TB9331-E (19mm)] 19.8° (H), 13.3° (V) [TB9331-E (35mm)] 14° (H), 9.3° (V) [TB9331-E (50mm)]
Day/ Night		-		-
IR Illuminators		-		-
Min. Illumination		-		-
Max. Resolution/ Frame Rate		30 fps @ 384x256		30 fps @ 720x480
WDR Technology*		-		-
On-board Storage		MicroSD/ SDHC/ SDXC card slot		MicroSD/ SDHC/ SDXC card slot
Video/ Audio/ Network				
Video Compression		Triple-Codec (H.265/ H.264/ MJPEG)		Triple-Codec (H.265/ H.264/ MJPEG)
Audio		Two-way Audio (Full duplex)		Two-way Audio (Full duplex)
Digital Input/ Output		1/1		1/1
ONVIF		Profile G/S		Profile G/S
Solution Integration				
Security		Trend Micro IoT Security		Trend Micro IoT Security
VCA		-		-
General				
Power Input/ Consumption		AC 24V/ DC 12V/ PoE Max. 12.5 W		AC 24V/ DC 12V/ PoE Max. 14 W
Housing		IP66, IP67, IK10, NEMA 4X		IP66, IP67, IK10, NEMA 4X
Dimensions		w/ junction box: 121 x 121 x 472 mm (8.8mm) 121 x 121 x 453 mm (19mm) 121 x 121 x 456 mm (35/50mm)		w/ junction box: 121 x 121 x 472 mm (8.8mm) 121 x 121 x 453 mm (19mm) 121 x 121 x 456 mm (35/50mm)
Operating Temperature		-50°C ~ 60°C (-58°F ~ 140°F)		-30°C ~ 60°C (-22°F ~ 140°F)
NDAA Compliance Product		-		-

Application Solution

Correctional Facilities

Corner Dome Cameras



Designed for Correctional Institutions

Specifically made for prisons, jails, and mental institutions.



Anti-Ligature

Designed in a way to protect inmates from hanging, suicide, and other methods of self inflicted harm.





CD9381-HNTV



CD9381-HNVF2

Model	CD9381-HNTV	CD9381-HNVF2
Corner Dome Cameras	5 Megapixel	
Camera Features		
Sensor Type	1/2.7" Progressive CMOS	1/2.7" Progressive CMOS
Lens Type/ Focal Length/ F-number	Motorized/ 2.8 ~ 8 mm/ F1.8 ~ F2.78	Fixed/ 2.4 mm/ F2.1
Field of View	95° ~ 41° (H) 69° ~ 31° (V)	124° (H) 92° (V)
Day/ Night	•	•
IR Illuminators	10 m, IR LED*2	10 m, IR LED*2
Min. Illumination	0.085 lux @ F2.1(Color) <0.005 lux, @ F2.1(B/W) 0 lux with IR illumination on	0.07 lux @ F2.1(Color) <0.005 lux, @ F2.1(B/W) 0 lux with IR illumination on
Max. Resolution/ Frame Rate	30 fps @ 2560X1920 60 fps @ 1920x1080	30 fps @ 2560x1920 60 fps @ 1920x1080
WDR Technology*	WDR Pro	WDR Pro
On-board Storage	microSD/ SDHC/ SDXC card slot	microSD/ SDHC/ SDXC card slot
Video/ Audio/ Network		
Video Compression	Triple-Codec (H.265/ H.264/ MJPEG)	Triple-Codec (H.265/ H.264/ MJPEG)
Audio	Two-way Audio (Full duplex)	Two-way Audio (Full duplex)
Digital Input/ Output	1/1	1/1
ONVIF	Profile G/S/T	Profile G/S/T
Solution Integration		
Security	Secure Boot, Signed Firmware, Trend Micro IoT Security	Secure Boot, Signed Firmware, Trend Micro IoT Security
VCA	Smart Motion Detection, Smart VCA	Smart Motion Detection, Smart VCA
General		
Power Input/ Consumption	AC 24V/ DC 12V/ PoE Max. 18 W	AC 24V/ DC 12V/ PoE Max. 18 W
Housing	IP67, IP6K9K, IK10+	IP67, IP6K9K, IK10+
Dimensions	226 x 221 x 112 mm	226 x 221 x 112 mm
Operating Temperature	-10°C ~ 55°C (14°F ~ 122°F)	-10°C ~ 55°C (14°F ~ 122°F)
NDA Compliance Product	•	•

Application Solution

Counting Solution



People Counting

VIVOTEK offers highly accurate visual counting solutions for both retail and transportation industries.



Retail

Accurately obtain customer foot traffic data and effortlessly optimize store management. Furthermore with the capability to stitch multiple counting cameras together, users can efficiently manage systems covering expansive floor plans. (Recommended Product SC9133-RTL, Page70)



Transportation

Accurate Counting, combined with Deep Learning Smart Object Classification, is purpose-built for onboard rolling stock and transit vehicle applications, empowering users to receive valuable passenger-flow data and object types. (Recommended Product SC9133, Page70)

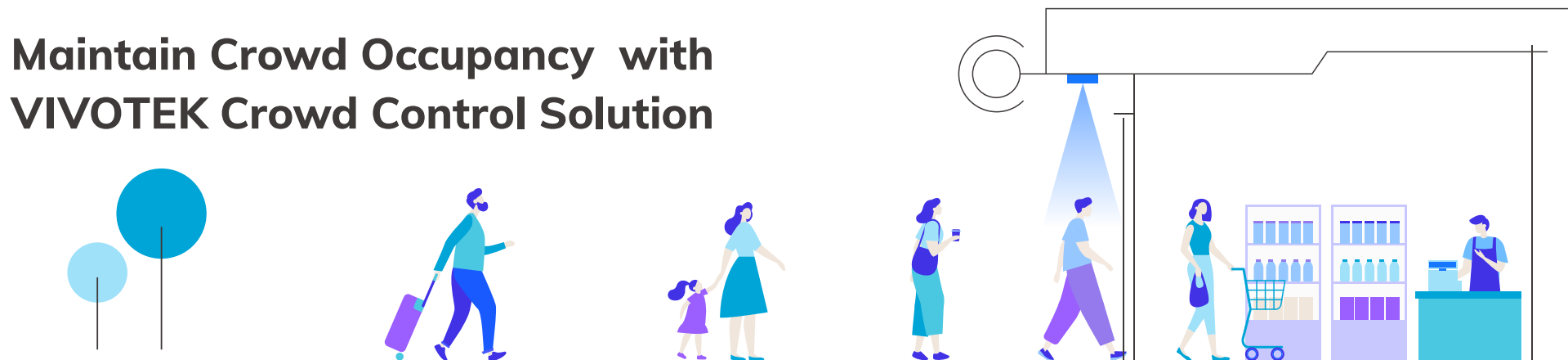




Model	NEW SC9133-RTL	NEW SC9133	SC8131
	SC Series		
Resolution	30 fps @ 1792x1792	30 fps @ 1792x1792	15 fps @ 1280x784
Max. Stream	3 Streams	3 Streams	3 Streams
Mode	Day / Night	Day / Night	Day
WDR Technology	WDR Pro	WDR Pro	WDR Enhanced
Housing	IP66, IK10	IP66, IK10	Metal
Certifications	EN50155, EN45545-2, EN50121-3-2, EN50121-4, EN61373, E-Mark (R10), ECE R118		
Operating Temperature	-30°C ~ 60°C (-22°F ~ 140°F)	-30°C ~ 60°C (-22°F ~ 140°F)	-10°C ~ 40°C (14°F ~ 104°F)
Power Input	PoE	PoE (M12 connector)	PoE
Dimensions	140 x 76 x 42 mm	140 x 76 x 42 mm	160 x 70 x 38 mm
NDA Compliance Product	●	●	●

* For fire and smoke norms compliance details, please contact VIVOTEK. Extra conditions may apply.

Maintain Crowd Occupancy with VIVOTEK Crowd Control Solution



* All specifications are subject to change without notice.

[BACK TO CONTENTS](#)

Application Solution

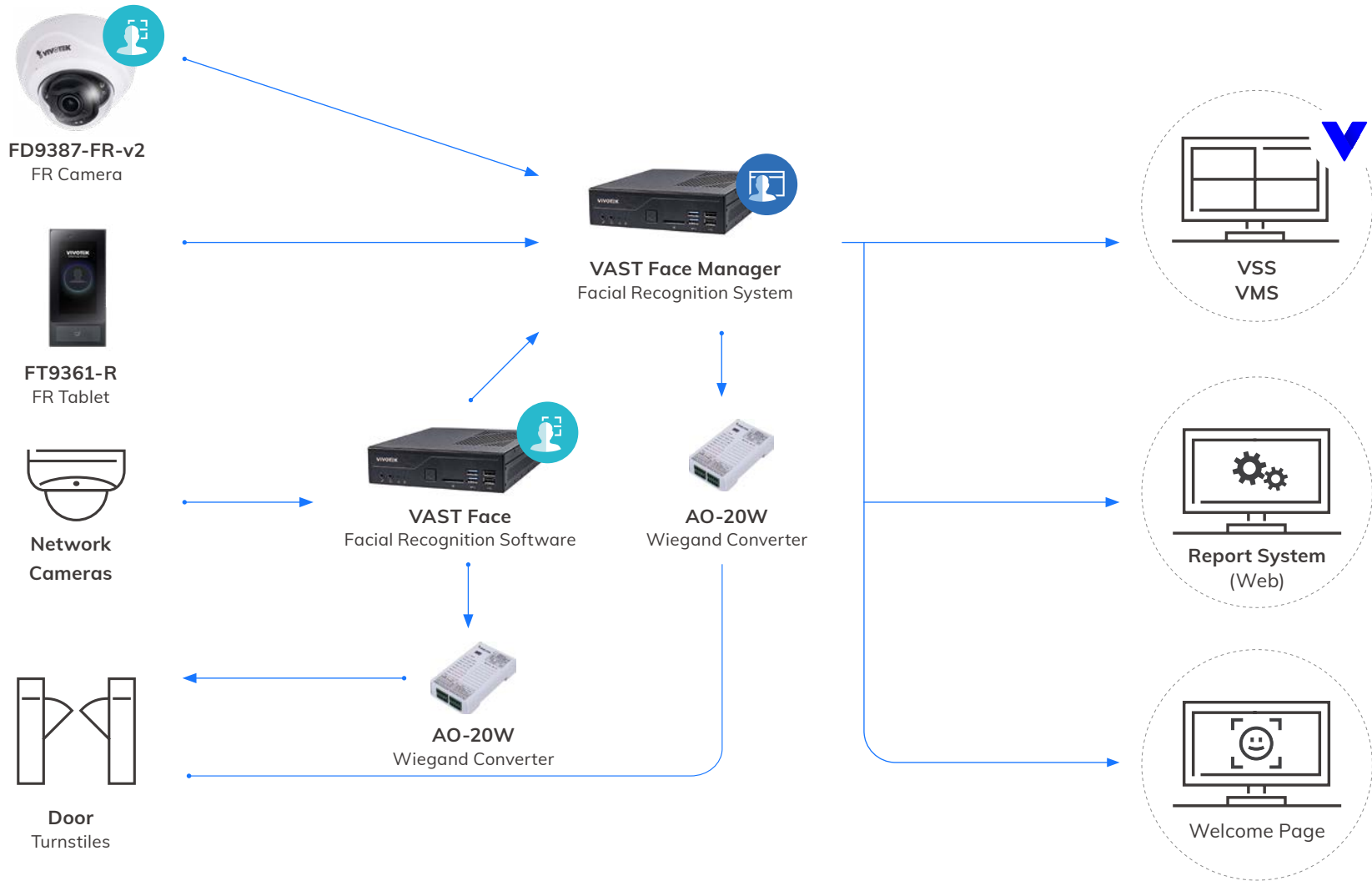
Facial Recognition

Hands Free Solution for Access Control

For the most complete protection in highly sensitive environments, VIVOTEK provides a comprehensive Facial Recognition (FR) Solution. Consisting of workstations, servers and tablets combined with a variety of cameras, VIVOTEK's Facial Recognition Solution provides immediate and accurate detection and recognition for security. Fully integrated with VIVOTEK's new VSS VMS, users can both monitor and manage facial recognition results, producing an intelligent surveillance solution for any application.



Facial Recognition Solution



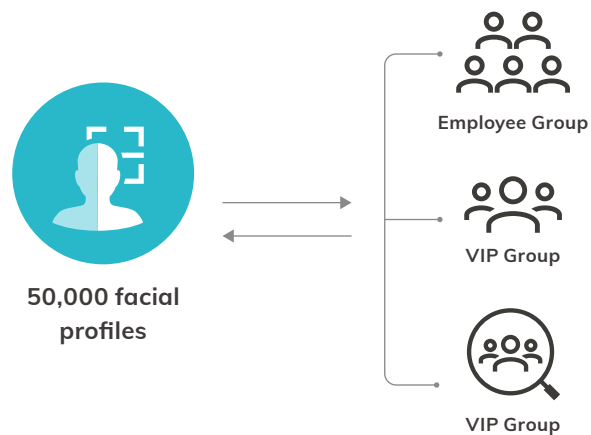


Facial Recognition

VAST Face FR Workstation

Large Capacity of Facial Profiles

Able to store up to 50,000 facial profiles. Administrators can categorize profiles into different groups and grant varied credentials to each group.



Accurate Authentication

Combine with IP cameras to capture facial images and verify in real-time, providing 99% accurate authentication.





VAST Face Workstation



Model **IE9232-F**

	VAST Face Workstation
Hardware	Intel CPU: i7-10700 Memory: DDR4 32GB RAM, HDD: 2.5" 500GB SSD
OS	Linux
Maximum Number of Faces in Database	50,000
Maximum Number of Connected Devices	Up to 6
Power Input	100-240V AC
Power Consumption	Max. 90W
Dimensions	240 x 210 x 57 mm
Weight	1.3 kg net and 2.1 kg gross
Safety Certifications	CE, FCC, UL, CB, BSMI
Supported IP cameras	Any H.264/ H.265 RTSP IP Camera

* All specifications are subject to change without notice.

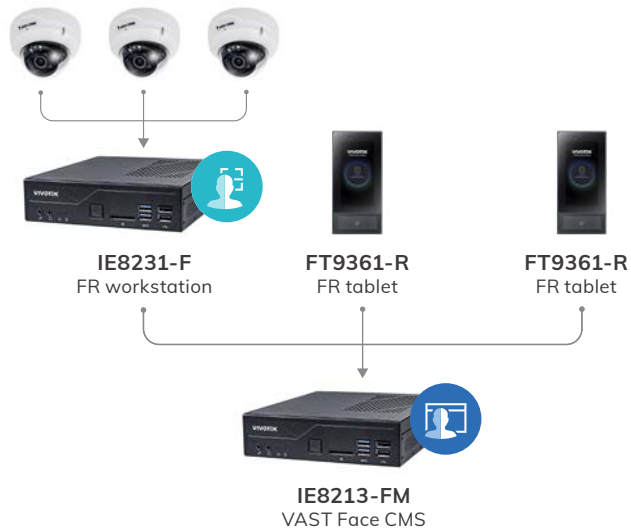


Facial Recognition

VAST Face FR CMS

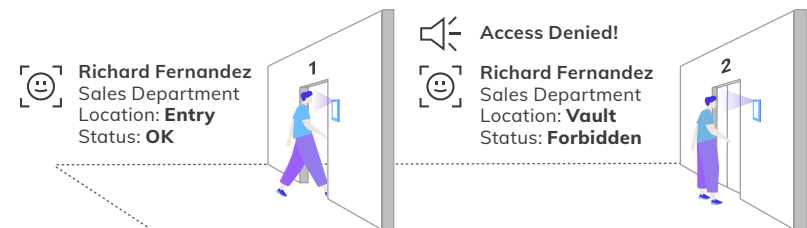
Content Management System

Capable of managing a maximum of 256 connected facial recognition devices to establish people lists, facial profiles and attendance reports.



Highly Secure

Users can define customized access authentication rules and schedules by area or user groups, providing more oversight than traditional card-based access systems.



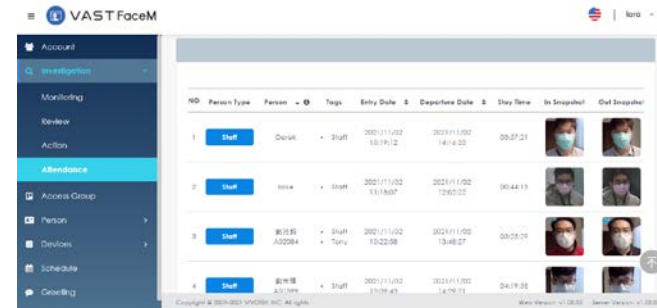
Persons of Interest (POI) Management

Users can assign each person into one or more groups for easier identification.



Rich Infographic Reports

Rich infographic reports provide decision-makers with a bigger picture and deeper understanding of people entering and leaving.



VAST Face CMS



Model

IE9281-FM

	VAST Face Manager
Hardware	Intel CPU: i7-10700 Memory: DDR4-2666 32GB RAM HDD: 2.5" 500GB SSD
OS	Linux
Maximum Number of Faces in Database	50,000
Maximum Number of Connected Devices	Up to 256
Power Input	100-240V AC
Power Consumption	Max. 90W
Dimensions	250 x 225 x 44 mm
Weight	4 kg
Safety Certifications	CE, FCC, VCCI

* All specifications are subject to change without notice.

Application Solution

Facial Recognition Tablet



Hands-Free Access Control

Detect facial profiles and match with profiles in the database, achieving true hands-free access control.



Accurate Authentication

Facial images are captured and verified in real-time, providing 99% accurate authentication.



Huge Capacity of Facial Profiles

Enable to store up to 50,000 facial profiles. Administrators can categorize profiles into different groups and grant varied credentials to each group.



Dual Accreditation Available

Employees must meet both facial and card reader verification in order to pass through, strengthening security to a higher level.

* VAST Face FR CMS license required

Model

FT9361-R

	Facial Recognition Tablet
Hardware	Memory: 8GB ROM 1GB RAM
OS	Linux
Database Size	50,000 Profiles (Max.)
Camera	Resolution: 1920x1080 IR 1.3M @1280x1080
Display	IPS 6" (1440x720)
Build in Card Reader	13.56Mhz Mifare DESFire EV1, EV2
Recognition Distance	0.3-1.5M
Power Input	PoE Class 4 (IEEE802.3at)/ DC 12V
Weigand	Output 24bit/26bit/36bit
Dimensions	221.1 x 103.6 x 26.5 mm
Safety Certifications	EMC: CE , FCC ,NCC

* All specifications are subject to change without notice.



Application Solution

Facial Recognition Camera

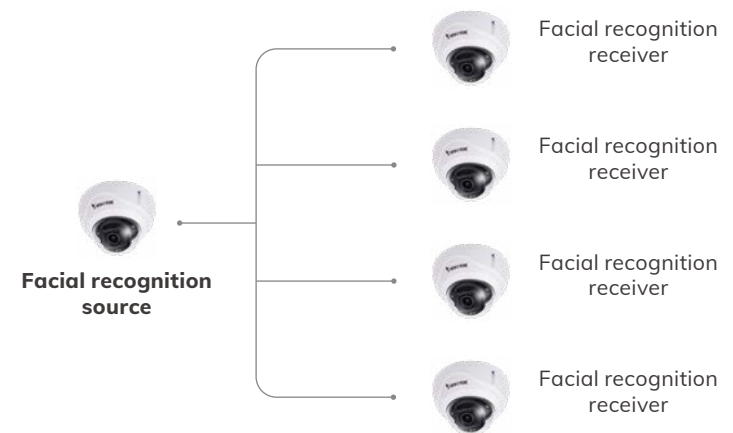
10,000 Faces on the edge

With 99% facial recognition accuracy, it is a powerful tool for accurate facial detection and person of interest control across multiple locations.



Serverless Facial Recognition Infrastructure

It can operate fully without middleware or FTP server, reducing the operational cost. With a single FD9387-FR-v2, users can store up to 10,000 facial profiles in a serverless architecture and manage/maintain the database in one camera, which will automatically synchronize with other facial recognition cameras.





Privacy mode

For enterprise or privacy sensitive regions, this protects personal privacy and prevents sending snapshots of persons of interest (POI). Instead, users can hide POI information on the web or disable picture sharing with third-party systems, which helps to safeguard user privacy and ensures that sensitive data is not shared without their consent.



Model **NEW** FD9387-FR-v2

	Facial Recognition Camera
Camera Features	
Sensor Type	1/2.7" Progressive CMOS
Lens Type/ Focal Length/ F-number	Motorized/ 2.7 ~ 13.5 mm/ F1.4 ~ F2.8
Field of View	95° ~ 30° (H) 70° ~ 23° (V)
Day/ Night	●
IR Illuminators	50 m, IR LED*4
WDR Technology	WDR Pro
Application Features	
Facial Recognition Performance	Up to 99% accuracy ; supports recognition with mask Gender and age estimation; privacy mode
Numbers of Face Captures	30 faces per second
Facial Recognition Profile Database	Up to 10,000 profiles
Automatic Create Profile for Stranger	Yes
Integration	ONVIF profile S event push; HTTP/ HTTPS Push in JSON format

* All specifications are subject to change without notice.

Application Solution

Network Audio



Audio for Security

Event-triggered audio announcements to improve property security.



Automated Audio Clips

Support broadcasting live announcements or pre-recorded audio clips automatically when VSS alarm management is triggered.



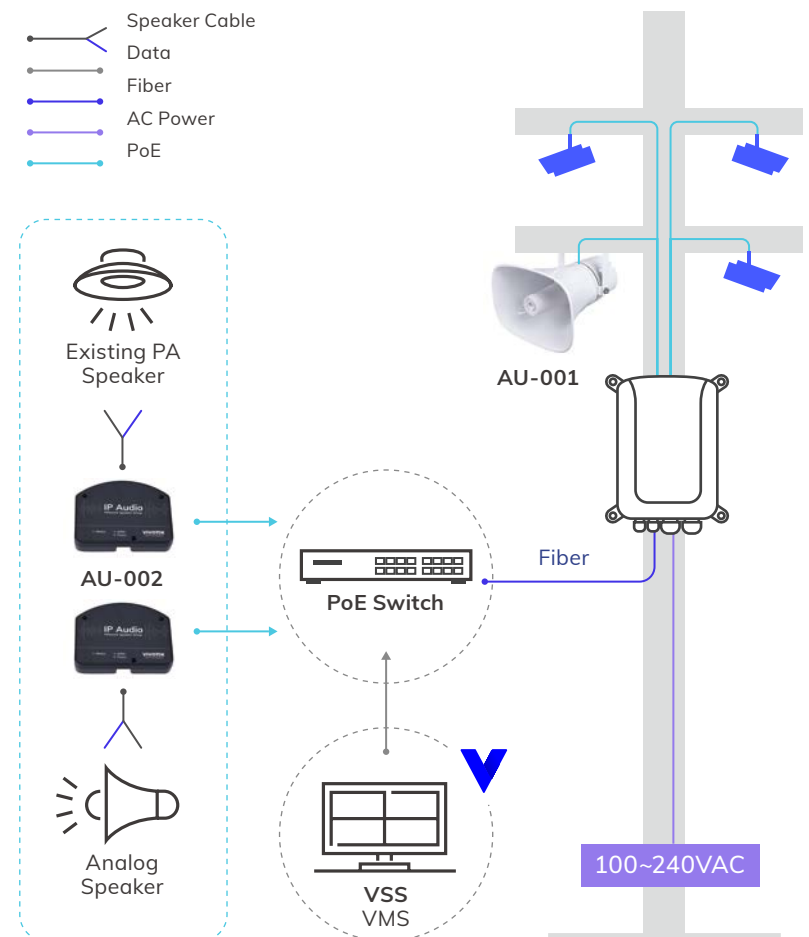
Loitering Alerts

When a person is loitering beyond a preset time limit, an audio warning can be produced.



Deter Crime and Safeguarding

Prevent financial damage from graffiti, breaking and entering, or other criminal acts through proactive audio alarms.





AU-001



AU-002

Model	AU-001	AU-002
Network Audio Solution	Network Horn Speaker	Network Speaker Driver
Product Information		
Average Min. power	20 W	20 W
Frequency Ranges	330 Hz~ 8000 Hz	-
Max. SPL 1W / 1M	106 dB	-
Microphone	100Hz-16KHz Single point, SPL-44 ± 2db AT 2 KΩ	100Hz-16KHz Single point, SPL-44 ± 2db AT 2 KΩ
Network		
SIP support	RFC 3261(SIP base standard)	RFC 3261(SIP base standard)
Interface	WAN: RJ-45x1, 10/100Mbps Fast Ethernet port	WAN: RJ-45x1, 10/100Mbps Fast Ethernet port
Audio Codec	G.711 a/uLaw, G.726, G.722, G.729, iLBC, L16	G.711 a/uLaw, G.726, G.722, G.729, iLBC, L16
Support Function	Auto provision, Audio tone testing, System log	Auto provision, Audio tone testing, System log
Security	Password protection, IP address filter, user access log, authentication	Password protection, IP address filter, user access log, authentication
General		
Casing	Robust aluminum, IP-66	Plastic
Power	PoE+, IEEE 802.3at	PoE+, IEEE 802.3at
Dimensions	280 x 200 x 280 mm	110 x 85 x 25 mm
Weight	1.95 kg	115 g
Safety Certifications	CE, FCC, LVD EN62368-1	CE, FCC, LVD EN62368-1

Application Solution

Media Converters

Effortless Solutions for converting media



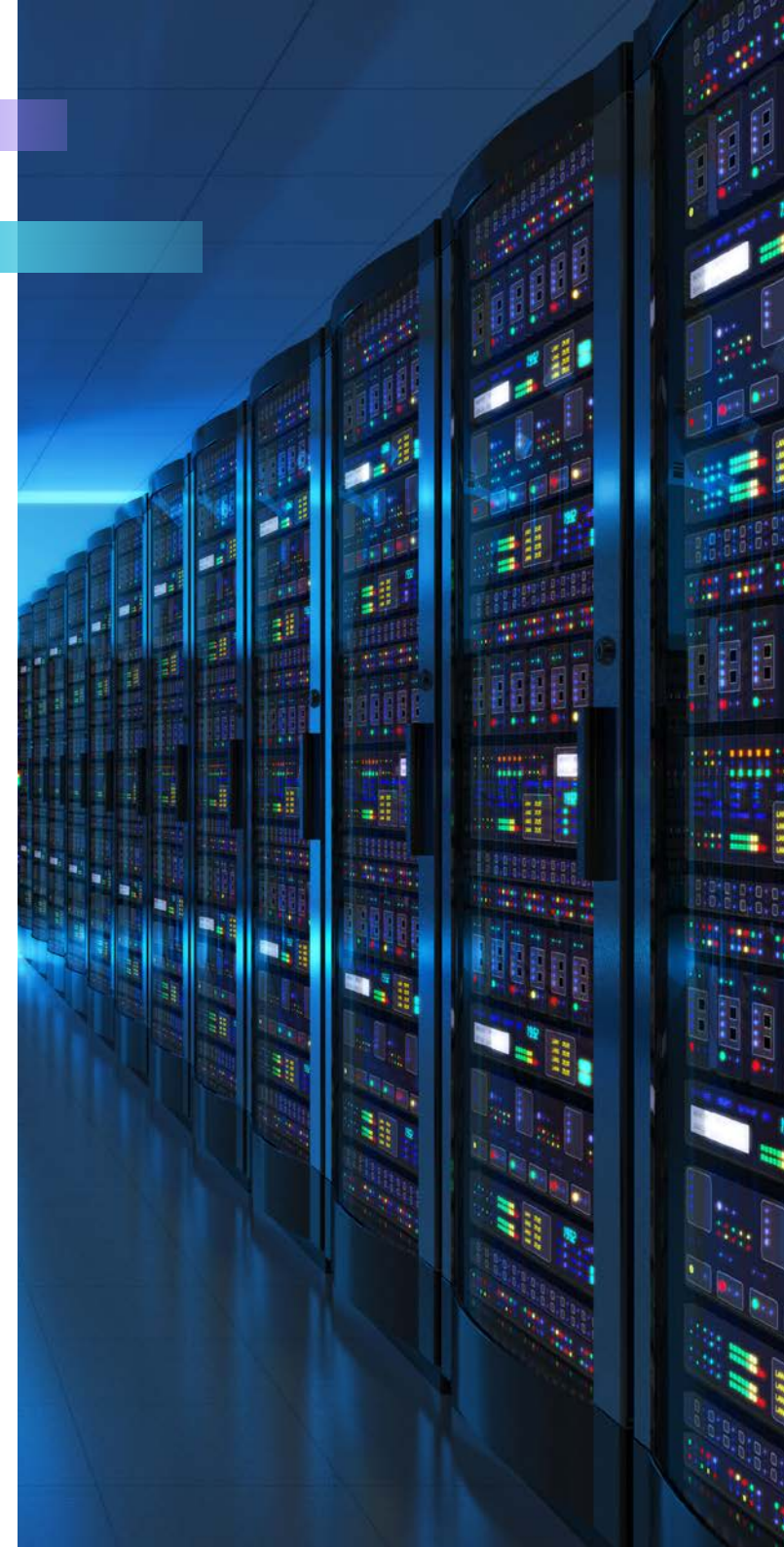
Video Receiver

Easily display network cameras live to an HD monitor.



Video Server

Enables users to bring existing analog cameras onto the IP system.





Model NEW RX9502

Video Receiver	
Local Display	
Channels	Up to 32 channels
Video Output	HDMI
Display Resolution	3840x2160 1920x1080 1280x720
Fisheye Dewarp	•
Video	
Video Compression	H.265/ H.264/ MJPEG
Max. Decoding Capacity	H.265/ H.264: 3840x2160 @ 90 fps (3CH)
LiveView Decoding (Local)	Up to 7680x2560
General	
Connectors	Ethernet 10/100/1000 RJ45 *1 USB 2.0 *1 (Front) USB 3.0 *1 (Back)
Power Input	DC 12V 0.9A
Power Consumption	Max. 11 W
Installation, Management, and Maintenance	Shepherd, VAST 2, VSS
Weight	530 g
Dimensions	198 x 200 x 47 mm
Operating Temperature	-10°C ~ 50 °C (14°F ~ 122°F)

Model VS8100-v2

Video Server	
Features	
Video Source	1 Analog Camera Input
Video Modulation	NTSC/ PAL Auto Detection
Max. Resolution/ Frame Rate	30 fps @ 720x480 / NTSC 25 fps @ 720x576 / PAL
Video/ Audio/ Network	
Video Compression	Dual-Codec (H.264/ MJPEG)
Audio	One-way Audio
Networking	10/100 Mbps Ethernet
Serial Connectors	RS485
ONVIF	Profile S
Solution Integration	
Security	Trend Micro IoT Security
Motion Detection	•
General	
Power Input/ Consumption	DC 12V/ Max. 3 W
Dimensions	65 x 34 x 25 mm
Operating Temperature	0°C ~ 50 °C (32°F ~ 122°F)

* All specifications are subject to change without notice.

Network Video Recorders

Naming Rule

Core+ AI

Desktop NVR

Rack Mount NVR



Network Video Recorders

Naming Rule

ND	9	3	2	2	P	-	v2
1-2 nd	3 rd	4 th	5 th	6 th	7 th		8 th

NVR Model

1-2 nd Model Category	
Code	Description
NR	Rack Mount Type Network Video Recorder (Include Rack Mount Kit)
ND	Desktop Type Network Video Recorder (Without Rack Mount Kit)
NV	Vehicle Type Network Video Recorder
RX	Network Receiver

3 rd A/V Type	
NO.	Description
8	H.264 / MJPEG
9	H.265 / H.264 / MJPEG

4 th Amount of Channel	
NO.	Description
2	2 to the power of 2 = 4 Channels
3	2 to the power of 3 = 8 Channels
4	2 to the power of 4 = 16 Channels
5	2 to the power of 5 = 32 Channels
6	2 to the power of 6 = 64 Channels
7	2 to the power of 7 = 128 Channels

5 th ND/NV/RX Series - HDDs	
NO.	Description
0	No HDD
1	1 HDD
2	2 HDDs
3	3 HDDs
4	4 HDDs
5	5 HDDs
6	6 HDDs
7	7 HDDs
8	8 HDDs
9	9 HDDs

5 th NR Series - HDD Group	
NO.	Description
8	8 HDD for 1 Group

6 th Revision for ND/ NV/ RX Series	
NO.	Description
1-9	Not Specified

6 th Revision for NR* Series	
NO.	Description
1-9	Multiplied by the Number of HDD Group

*e.g., 5th no.=8; 6th no.=2, Total HDD= 8 x 2= 16

7 th Extension/ Feature for ND/ NV/ RX	
NO.	Description
P	PoE
W	Wireless Application

7 th Extension for NR/ NS Series	
NO.	Description
(A)	New version

8 th Digit Extension	
NO.	Description
v	1 - 99

SVC Definition

S SERIES	SUPREME
	Definition
	Top of the line, cutting edge technology, Large-Huge Systems

V SERIES	VERSATILE
	Definition
	Advanced and feature rich for most applications, Medium-Large Systems

C SERIES	COMPETITIVE
	Definition
	Cost effective professional surveillance, Small-Medium Systems

Network Video Recorders

Core+ AI

AI Enhanced Firmware for NVR



VIVOTEK's Core+ ND series network video recorder firmware was embedded with VIVOTEK technology featuring cybersecurity management, Smart VCA event search, Smart Search II functions, and counting solutions. Now next generation Core+ AI firmware has raised the bar even higher. Already enabled with all Core+ features, Core+ AI NVR's add **Deep Search**, utilizing AI to provide the fastest, smartest and most efficient post-event search user experience. VIVOTEK cameras enabled with Vision Object Analytics provide the metadata used by **Deep Search's** AI. **Deep Search** is comprised of two main functions: **Attribute Search** and **Scene Search**.

*Some models may not include all Core+ features. Be sure to check the specific model's specifications

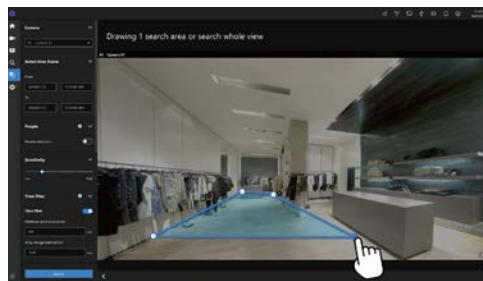
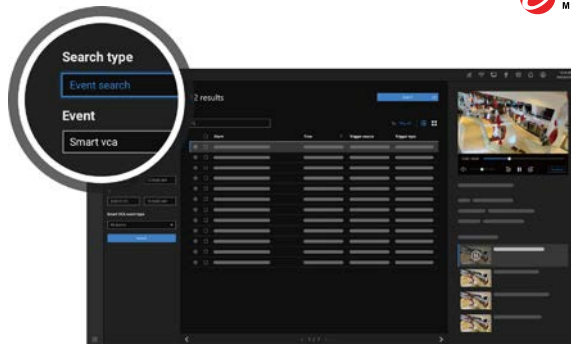
NVR CORE+ AI

Deep Search: Attribute Search

Attribute Search uses people and vehicles as search criteria utilizing multiple attributes (e.g., gender, age group, clothing or car color, vehicle type, etc.) to quickly and accurately find the person / vehicle of interest.

Deep Search: Scene Search

Scene search allows users to search a specific camera's video footage using line crossing detection, intrusion detection, or loitering detection.



Cybersecurity Management

Core+ NVRs support Trend Micro IoT Security, empowering the NVRs to automatically detect and prevent credential-based attacks and block suspicious events. VIVOTEK network cameras enabled with Trend Micro IoT Security can also connect with Core+ NVRs, enabling the NVRs to receive instant notifications of security events from the cameras and to understand the type and status of cyber-attacks, as well as to acquire attack information from cameras.

Smart VCA Event Search

Core+ NVRs support alarm management and event search of VIVOTEK's deep-learning video analytics technology - Smart VCA. VCA rules and data such as people-tracking frames and motion-detection frames can be shown on live or playback video display. Users can search by single or multiple events, playback triggered events and then export these search results to video clips.

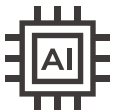
Counting Solution

Core+ NVRs support VIVOTEK's 3D people counting cameras and cloud service software – VIVOCloud. Counting rules can be shown on the NVR's video display from counting cameras. Furthermore, all of the counting data can be stored automatically to the NVR's hard drive as well as be acquired by VIVOCloud. Users can also build customized counting reports through the VIVOCloud interface. This enables tracking of in-store customer flow and benchmarking of campaign performance between different stores or across different time frames to make business more efficient.

Network Video Recorders

Desktop NVR

Intelligent Features and Cybersecurity Protection, Ideal for Middle-Large Scale Systems and General Surveillance.



Core+ AI*

VIVOTEK Core+ AI supporting **Deep Search**, Smart VCA, Smart Search II and Cybersecurity Management, offering a faster and smarter user experience.

* for selected models



4K Display

H.265/ H.264 supported, 4K decoding and local display for clear and vivid monitoring.



RAID Supported*

RAID 0/1/5 configuration provides further data security in case of a rare event hard drive failure.

* Available on selected models



CMS Management

Supports VIVOTEK's VSS CMS management, empowering users to set up and manage surveillance systems with ease. Check specifications of different VSS version.



Retail



City Surveillance



Model



ND9442P/ ND9542P



NEW

ND9326P/ ND9426P



ND9323P/ ND9425P



ND9213P

Network Video Recorders				
Local Display				
Channels	Up to 16/32 channels	Up to 8/16 channels	Up to 8/16 channels	Up to 4 channels
Video Output	HDMI/VGA	HDMI/VGA	HDMI/VGA	HDMI/VGA
Display Resolution	3840x2160/ 1920x1080/ 1280x720	3840x2160/ 1920x1080/ 1280x720	3840x2160/ 1920x1080/ 1280x720	3840x2160/ 1920x1080/ 1280x720
Fisheye Dewarp	Local: 10,1P,1R, 103R, 108R, 1P3R Web: 10, 1R, 1P	Local: 10, 1P,1R, 103R, 108R, 1P3R Web: 10, 1R, 1P	Local: 10, 1R, 103R, 108R Web: 10, 1R, 1P	Local: 10, 1R, 103R, 108R Web: 10, 1R, 1P
Video/ Record				
Video Compression	H.265/H.264/MJPEG	H.265/H.264/MJPEG	H.265/H.264/MJPEG	H.265/H.264/MJPEG
Max. Decoding Capability	H.265/H.264: 3840x2160 @ 90 fps	H.265/H.264: 3840x2160 @ 120 fps	H.265/H.264: 3840x2160 @ 30 fps	H.265/H.264: 3840x2160 @ 30 fps
Decoding Resolution (Local)	Up to 7680x2560	Up to 7680x2560	Up to 3840x2160	Up to 3840x2160
Recording Throughput	192 Mbps	192 Mbps	64 Mbps	64 Mbps
Storage/ General				
Hard Disk	3.5" SATA HDD*4	3.5" SATA HDD*2	3.5" SATA HDD*2	3.5" SATA HDD*1
RAID	RAID 0, 1, 5	RAID 0, 1	RAID 0, 1	-
PoE	16x 802.3at/af Compliant PoE Ports (Total Max. 200 W)	8/16x 802.3at/af Compliant PoE Ports (Total Max. 120 W/200 W)	8/16x 802.3at/af Compliant PoE Ports (Total Max. 120 W/200 W)	4x 802.3at/af Compliant PoE Ports (Total Max. 50 W)
Connectors	Ethernet 10/100/1000 RJ45 *2 Alarm In *16, Alarm Out *8 USB 2.0 *2, USB 3.0 *1 Audio Output *1 Audio Input *1 (Reserved) RS485 (Reserved)	Ethernet 10/100/1000 RJ45 *2 Alarm In *4, Alarm Out *1 USB 2.0 *2, USB 3.0 *1 Audio Output *1 Audio Input *1 (Reserved)	Ethernet 10/100/1000 RJ45 *1 Alarm In *4, Alarm Out *1 USBw 2.0 *1, USB 3.0 *1 Audio Output *1 Audio Input *1 (Reserved)	Ethernet 10/100 RJ45 *1 Alarm In *4, Alarm Out *2 USB 2.0 *1, USB 3.0 *1 Audio Output *1 Audio Input *1 (Reserved)
Power Input	AC 100 ~ 240V/ 50 ~ 60Hz	AC 100 ~ 240V/ 50 ~ 60Hz	AC 100 ~ 240V/ 50 ~ 60Hz	DC 48V 2A
Power Consumption	Max. 300 W	Max. 190 W/ 270W	Max. 175 W/255 W	Max. 96 W
Installation, Management, and Maintenance	VSS, VAST 2, Shepherd, VIVOCLOUD, iViewer (iOS/Android)	VSS, VAST 2, Shepherd, VIVOCLOUD, iViewer (iOS/Android)	VSS, VAST 2, Shepherd, VIVOCLOUD, iViewer (iOS/Android)	VSS, VAST 2, Shepherd, VIVOCLOUD, iViewer (iOS/Android)
Dimensions	432 x 421 x 66 mm	365 x 315 x 44 mm	366 x 320 x 46 mm	264 x 247 x 43 mm
Advanced Features				
Smart VCA Event Search	●	●	●	●
Deep Search	●	●	-	-
Cybersecurity Management	●	●	●	●
Trend Micro IoT Security	●	●	●	●
NDAA Compliance Product	●	●	●	●

* All specifications are subject to change without notice.

Network Video Recorders

Rack Mount NVR

Super Performance and Reliability for Large Scale Systems



Enhanced Decoding Capability

H.265/H.264 supported with enhanced decoding capability for high resolution video cameras up to 20MP.



Hot-Swappable HDD

Supports Hot-Swappable HDD bays with RAID 0/1/5/6/10/50/60, and NVR failover for reliable and secure recording data.



Embedded VAST Security Station

Built-in VIVOTEK VAST Security Station supports multiple VIVOTEK solutions such as Smart VCA, Cybersecurity Management, Transportation, and License Plate Recognition.



Data Magnet Solution

Embedded free Data Magnet for easy integration with 3rd party devices and software.





Industry



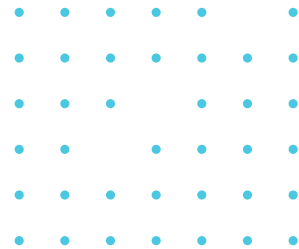
Transportation



Model	 NEW	NR9682-v3	 NEW	NR9581-v3
Rack Mount NVR				
Display				
Channels		64 channels (expandable to 192-CH)		32 channels (expandable to 128-CH)
Video Output		HDMI/DP/DVI/VGA		HDMI/DP/DVI/VGA
Display Resolution		HDMI: 4096x2160/ DP: 7680x4320 DVI: 1920x1200/ VGA: 1920x1200		HDMI: 4096x2160/ DP: 7680x4320 DVI: 1920x1200/ VGA: 1920x1200
Fisheye Dewarp		10, 1P, 1R, 1O3R, 4R, 2P, 4R Pro, 108R and Fisheye Auto-Pan		10, 1P, 1R, 1O3R, 4R, 2P, 4R Pro, 108R and Fisheye Auto-Pan
Video/ Record				
Video Compression		H.265/H.264/MJPEG		H.265/H.264/MJPEG
Max. Decoding Capability		H.264: 1920x1080 @ 690 fps H.265: 1920x1080 @ 450 fps		H.264: 1920x1080 @ 690 fps H.265: 1920x1080 @ 450 fps
Decoding Resolution (Local)		Up to 7680x2560		Up to 7680x2560
Recording Throughput		768 Mbps		512 Mbps
Storage/ General				
Hard Disk		3.5" SATA HDD*16 (Hot Swappable)		3.5" SATA HDD*8 (Hot Swappable)
RAID		RAID 0, 1, 5, 6, 10, 50, 60		RAID 0, 1, 5, 6, 10, 50, 60
Connectors		2.5 Gigabit Ethernet (RJ-45) x2 USB 2.0 x2, USB 3.2 x4 Microphone Audio Jack Input x1 3.5 Line Input Audio Jack x1 3.5 Line Output Audio Jack x1		2.5 Gigabit Ethernet (RJ-45) x2 USB 2.0 x4, USB 3.2 x4 Microphone Audio Jack Input x1 3.5 Line Input Audio Jack x1 3.5 Line Output Audio Jack x1
Power Input		Redundant Power AC 100 ~ 240V		Redundant Power AC 100 ~ 240V
Power Consumption		Max. 920 W		Max. 550 W
Installation, Management, and Maintenance		VSS Pro, Shepherd		VSS Pro, Shepherd
Dimensions		437 x 647 x 132 mm		437 x 533 x 89 mm
Advanced Features				
Cybersecurity Management		●		●
Data Magnet		●		●
Failover		●		●
LPR Solution		●		●
Smart VCA Event		●		●
Deep Search		●		●
NDAA Compliance Product		●		●

* All specifications are subject to change without notice.

PoE Network Products



PoE Network

PoE Network Products

A full range of products designed for video surveillance systems, including power-surge prevention from lightning strikes, network management, multiple topology views of cameras, and more.



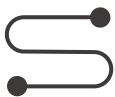
Network & PoE Management

- L2 Network Function
- PoE on/off Control for Each Port
- Cable Diagnostic



Industrial & Outdoor Ready

- Wide Temperature Support
- IP67 and IK10 Certified
- Built-in Surge Protection



Long Range PoE Extension

- 200~300m PoE Delivery
- Support Multiple Cameras with a Single Power Source
- Outdoor-ready Housing

Intuitively Managing IP Surveillance

The image displays three screenshots of a network management interface. The top screenshot shows a 'Topology View' with a network diagram and a list of devices on the right. The middle screenshot shows a 'Map View' with a street map and camera locations marked with green pins, with a 'Topology View' panel on the right. The bottom screenshot shows a 'Device Management' window for a specific device (FE8190) with various configuration options like 'Light', 'Diagnosis', 'Live Stream', 'Management', 'Default', and 'PoE Reset'.

Commercial Series



Model	AW-GEV-267A-370	AW-GEV-104B-130	AW-GEV-264B-370
Type	VivoCam L2+ Managed PoE Switch		VivoCam Web Smart Managed PoE Switch
Description	24xGE PoE + 2xGE Combo + 1xRJ45 Console	8xGE PoE + 2xGE SFP/ Per Port Max. 30W, Power Budget 130W	24xGE PoE + 2xGE SFP/ Per Port Max. 30W, Power Budget 370W



Model	AW-GEL-065A-060	AW-GEL-105A-110	AW-GEL-205A-260	AW-GEL-285A-380
Type	Lite Managed PoE Switch			
Description	4xGE PoE + 2xGE UTP / Per Port Max. 30W, Power Budget 60W / Extended PoE Mode 250m	8xGE PoE + 1xGE UTP + 1xGE SFP / Port 1-2 Per Port Max. 90W bt, Port 3-8 Per Port Max. 30W, Power Budget 110W / Extended PoE Mode 250m	16xGE PoE + 2xGE UTP + 2xGE SFP / Port 1-4 Per Port Max. 90W bt, Port 5-16 Per Port Max. 30W, Power Budget 260W / Extended PoE Mode 250m	24xGE PoE + 2xGE UTP + 2xGE SFP / Port 1-4 Per Port Max. 90W bt, Port 5-24 Per Port Max. 30W, Power Budget 380W / Extended PoE Mode 250m

* All specifications are subject to change without notice.



Model	AW-GTS-287A	AW-FET-060C-065	AW-FGT-100D-120
Type	10G L2+ Managed Switch		Unmanaged FE PoE Switch
Description	20xGE SFP + 4xCombo GE + 4x10G SFP		4xFE PoE + 2xFE UTP Switch / Per Port Max. 30W, Power Budget 60W
			8xFE PoE + 2xGE Combo Switch / Per Port Max. 30W, Power Budget 115W



Model	AW-FGT-180D-250	AW-FGT-260D-380	AP-GIC-011A-030	AP-GIC-011B-090
Type	Unmanaged GE PoE Switch		PoE Injector	
Description	16xFE PoE + 2xGE Combo/ Per Port Max. 30W, Power Budget 250W		24xFE PoE + 2xGE Combo/ Per Port Max. 30W, Power Budget 370W	
			Indoor 1xGE IEEE 802.3at 30W	Indoor 1xGE IEEE 802.3bt 90W

* All specifications are subject to change without notice.

Industrial Series



Model
AW-IHT-1271



Model
AW-IHB-0100



Model
AW-IHB-0400



Model
AW-IHB-0800

Type	Industrial Vivocam L2+ Managed PoE Switch		Industrial Unmanaged PoE Switch	
Description	Industrial 8xGE PoE +4xGE SFP/ Per Port Max. 30W, Power Budget 240W	Industrial 1xGE 802.3bt 90W PoE Injector	Industrial 2xGE 802.3 bt 90W PoE + 2xGE SFP/ Per Port Max. 90W, Power Budget 180W	Industrial 4xGE 802.3bt 90W PoE + 2xGE UTP + 2xGE SFP/ Per Port Max. 90W, Power Budget 360W



Model
AW-IHT-0100



Model
AW-IHT-0601



Model
AW-IHT-0602



Model
AW-IHT-0800

Type	Industrial Unmanaged PoE Switch			
Description	Industrial 1xGE 30W PoE Injector	Industrial 4xGE PoE + 1xGE Combo + 1xGE SFP/ Per Port Max. 30W, Power Budget: 24V DC ~ 56V DC: 120 W, 12V DC: 65 W	Industrial EN50155 4xFE M12 PoE + 2xFE M12/ Per Port Max. 30W, Power Budget 120W	Industrial 4xGE PoE + 2xGE UTP + 2xGE SFP/ Per Port Max. 30W, Power Budget 120W



Model
AW-IHT-1000



Model
AW-IHS-0202

Type	Industrial Unmanaged PoE Switch	Industrial Media Converter
Description	Industrial 8xGE PoE + 2xGE SFP/ Per Port Max. 30W, Power Budget 240W	Industrial 1xFE + 1xFE SFP Media Converter

* All specifications are subject to change without notice.

Long Range Solution



AP-GXC-0100



AP-GXC-0200



AP-GXC-0150



AP-GXC-0250

Type	PoE Extender			
Description	Indoor 1-Port GE PoE Extender 15W/30W/60W/90W	Indoor 2-Port GE PoE Extender 15W/30W/60W/90W	Outdoor 1-Port GE PoE Extender 30W/60W/90W/95W, IP67, IK10	Outdoor 2-Port GE PoE Extender 30W/60W/90W/95W, IP67, IK10

Outdoor Series



AW-GET-083A-120



AP-PSP-050

Type	Outdoor Unmanaged PoE Switch	Outdoor PoE Surge Protector
Description	4xGE PoE + 2xGE UTP + 2xGE SFP	Outdoor PoE Surge Protector 16kV/IP67/IK10

* All specifications are subject to change without notice.

PoE Accessories



AT-CAB-001/AT-CAS-001



AT-CAB-002



AT-SUN-001



AT-SUN-002



AT-SWH-000

Model	AT-CAB-001/AT-CAS-001	AT-CAB-002	AT-SUN-001	AT-SUN-002	AT-SWH-000
Type	Cabinet		Cabinet Accessories		
Description	Cabinet/Cabinet for Speed dome (SD936X)	Side-mount Bracket for HLG Series Power Supply	Sunshield for AT-CAx Series Cabinet	Sunshield for AT-CAx + AT-CAB-002 Cabinet	Power Safety Kit



AT-SWH-002



AT-PSP-001



AT-WPC-001/ AT-WPC-002



AM-314/ AM-414



MDR-10-12

Model	AT-SWH-002	AT-PSP-001	AT-WPC-001/ AT-WPC-002	AM-314/ AM-414	MDR-10-12
Type	Cabinet Accessories				Industrial DIN-Rail Power Supply
Description	Door Open/Close Detection Switch	PoE Surge Protector	M16 Cable Gland for 4~7mm AWG/ for Corrugated Tubing : 5/16"	Pole Mount/ Corner Mount Adapter	Indoor Industrial Din Rail, 12VDC/10W, -20°C ~ 70°C



NDR-75-48



NDR-120-48/ NDR-240-48



DRL-48V120W1EN



DRL-48V240W1EN













HLG-60H-24

Model	NDR-75-48	NDR-120-48/ NDR-240-48	DRL-48V120W1EN	DRL-48V240W1EN	HLG-60H-24
Type	Industrial DIN-Rail Power Supply				Industrial Wall Mount Power Supply
Description	Indoor Industrial Din Rail, 48~55VDC/75W, -20°C ~ 70°C	Indoor Industrial Din Rail, 48~55VDC/120W & 240W, -20°C ~ 70°C	Indoor Industrial DIN Rail, 43.2-52.8VDC/120W Out, -30°C to +70°C (-40°C Cold Start)	Indoor Industrial DIN Rail, 43.2-52.8VDC/240W Out, -30°C to +70°C (-40°C Cold Start)	Outdoor Industrial, 24VDC/60W, -40°C ~ 70°C, IP67

* All specifications are subject to change without notice.

					
Model	HLG-80H-24/HLG-80H-48	HLG-80H-54	HLG-120H-24/HLG-120H-48	HLG-120H-54	HLG-240H-24/HLG-240H-54
Type	Industrial Wall Mount Power Supply				
Description	Outdoor Industrial, 24VDC/80W or 48VDC/80W, -40°C ~ 70°C, IP67	Outdoor Industrial, 54VDC/80W, -40°C ~ 70°C, IP67	Outdoor Industrial, 24VDC/120W or 48VDC/120W, -40°C ~ 70°C, IP67	Outdoor Industrial, 54VDC/120W, -40°C ~ 70°C, IP67	Outdoor Industrial, 24VDC/240W or 54VDC/240W, -40°C ~ 70°C, IP67

					
Model	AA-352	SFP-1000-MM85-X5	SFP-1000-MM13-02	SFP-1000-SM13-10/40	SFP-1000-MM85-X5I
Type	Outdoor Power Box	SFP Transceiver			
Description	IP67, IK10, 24VAC/6A, -40°C ~ 60°C	1.25G Multi-Mode SFP, 850nm, 0.5KM, 0°C ~ 70°C	1.25G Multi-Mode SFP, LC, 1310nm, 2KM, 0°C ~ 70°C	1.25G Single-Mode SFP, LC, 1310nm, 10KM or 40KM, 0°C ~ 70°C	Industrial 1.25G Multi-Mode SFP, LC, 850nm, 0.5KM, -40°C ~ 85°C

					
Model	SFP-1000-MM13-02I	SFP-1000-SM13-10I/40I	SFP-1000-CPTX-X1/X1I	SFP-2000-MM85-X3	SFP-2000-SM13-10
Type	SFP Transceiver			SFP+ Transceiver	
Description	Industrial 1.25G Multi-Mode SFP, LC, 1310nm, 2KM, -40°C ~ 85°C	Industrial 1.25G Single-Mode SFP, LC, 1310nm, 10KM/40KM, -40°C ~ 85°C	1000BaseT, SFP to RJ45, 100M, 0°C ~ 70°C / -40°C ~ 85°C	10G Multi-Mode SFP+, LC, 850nm, 0.3KM, 0°C ~ 70°C	10G Single-Mode SFP+, LC, 1310nm, 10KM, 0°C ~ 70°C

* All specifications are subject to change without notice.

Video Management Software

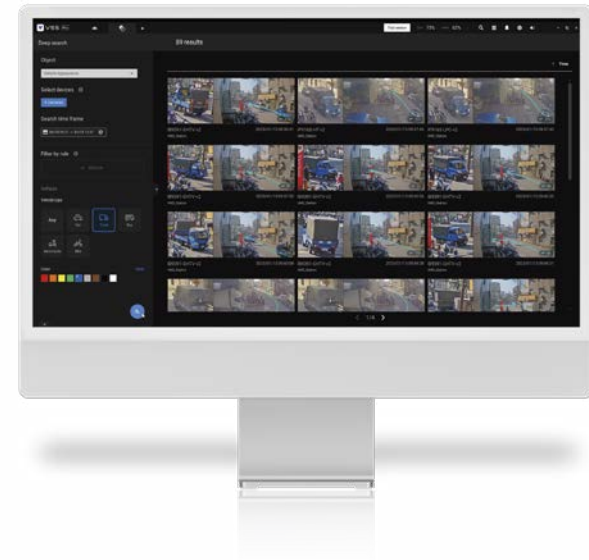
A Quick-to-set-up
A.I. Surveillance System



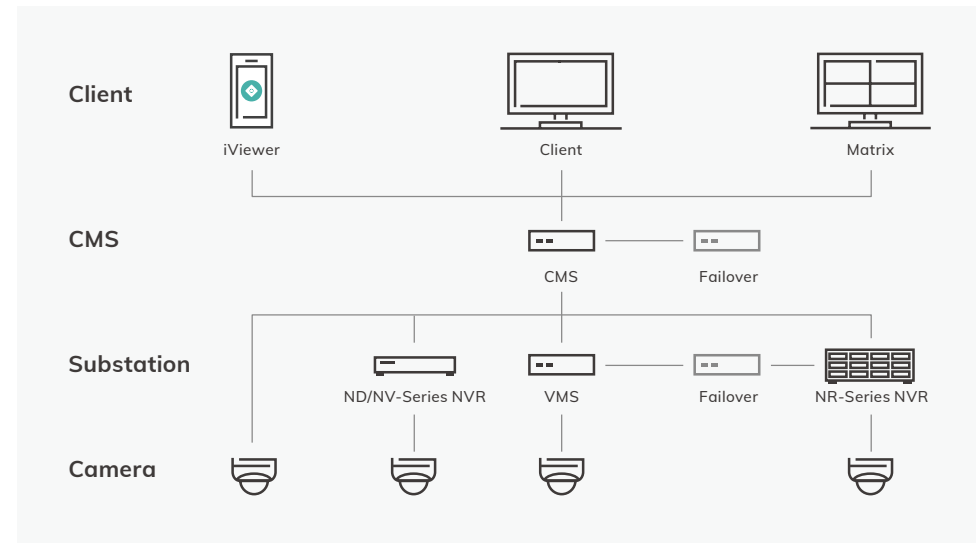
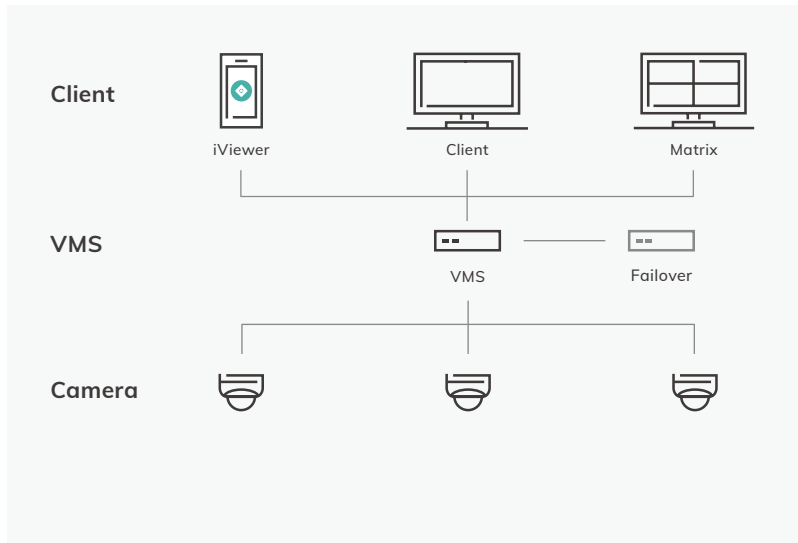
Video Management Software

VAST Security Station

VAST Security Station (VSS) is the next generation of VIVOTEK video management software. VSS expands the capabilities of previous VMS VAST 2, with newly added features including Enhanced User Defined Roles, Encrypted Video Recordings, and AI-based advanced post-event search function **Deep Search**. VSS is available in 3 different editions (Lite, Standard, Professional) to support security projects of all sizes, from small localized opportunities to multi-location enterprise operations.



VSS Architecture Overview





Product Edition	VSS Lite	VSS Standard	VSS Professional
Product Overview	Free entry-level VMS for basic surveillance needs	Cost-effective solution for small and mid-size business	Designed for mid-size to large-scale projects requiring central management and 24/7 operations
Deployment			
Maximum Number of Cameras Per Server	32	128	320
Maximum Number of Clients Per Server		200	
Maximum Number of Simultaneous Video Streaming Output Per Server		2048	
Maximum Number of Substations Per System	0	32 (ND9000/NV series NVR)	700 (ND9000/NV series NVR, VSS Pro NR series NVR, VSS Professional Station)
Maximum Number of Cameras Per System	32	128	22400
Key Features			
Live view	✓	✓	✓
Recording	✓	✓	✓
Playback	✓	✓	✓
Backup	✓	✓	✓
Event	✓	✓	✓
Dashboard	✓	✓	✓
Alarms	-	✓	✓
E-map	-	✓	✓
VCA(Counting) Report	-	✓	✓
Video Wall (Matrix)	-	-	✓
Search			
Bookmark Search	✓	✓	✓
Event Search	✓	✓	✓
Alarm Search	-	✓	✓
Smart Search	-	✓	✓
Deep Search	Object Search	-	✓
	Attribute Search	-	✓
	Scene Search	-	✓
	Re-Search	-	-

* All specifications are subject to change without notice.



User Management			
User Role	Administrator	V	V
	Customizable	V	V
	User Pre-defined	-	-
Video Encryption			
Digital Watermark	V	V	V
Exported Video Encryption	-	V (AES-256 CTR)	V (AES-256 CTR)
Recording Encryption	-	-	V (AES-256 CTR)
Device Compatibility			
Camera	VIVOTEK 8000/9000 series	VIVOTEK 8000/9000 series	VIVOTEK 8000/9000 series
3rd Party Video Source	-	ONVIF, RTSP	ONVIF, RTSP
Substation	-	VIVOTEK ND9000/NV series NVR	VIVOTEK ND9000/NV series NVR, VSS NR series NVR, VSS Professional Station
Joystick	-	V	V
Network Audio Device	-	V	V
Wiegand Converter	-	V	V
I/O Box	-	V	V
Access Control	-	V	V
Integration			
Data Magnet	-	V	V
TCP Message	-	V	V
Failover			
CMS Failover	-	-	V
Substation Failover	-	-	V

Solution Integration Alliance

The SIA (Solution Integration Alliance) Program is a strategic alliance that aims to facilitate the integration of VIVOTEK products into leading software or hardware platforms. With the SIA Program, partners have the flexibility to enhance key functionalities when creating an IP surveillance solution. The SIA Program provides programmable Software Development Kits (SDK) to allow partners to develop customized features on an open platform, allowing the highest possible level of integration. VIVOTEK also provides technical support throughout the development process.

Find out more about enrolling in the VIVOTEK SIA Program, please email sia@vivotek.com for more information.



SIA



VIVOTEK

A Delta Group Company

Distributed by:



www.vivotek.com

VIVOTEK Inc.

6F, No.192, Liancheng Rd., Zhonghe Dist.,
New Taipei City 235, Taiwan
| **T** +886-2-82455282 | **E** sales@vivotek.com

VIVOTEK Japan

〒 105-0012 東京都港区芝大門 2-1-14,
デルタ芝大門ビル
| **T** +81-3-5733-1280 | **E** salesjp@vivotek.com

VIVOTEK USA

2050 Ringwood Avenue, San Jose, CA 95131
| **T** 408-773-8686 | **E** salesusa@vivotek.com

VIVOTEK India

602, Best Sky Tower, Plot No. F-5, Netaji Subhash Place,
Pitampura, New Delhi-110034
| **T** +91-11-45137465 | **E** salesindia@vivotek.com

VIVOTEK EMEA

Zandsteen 15, 2132 MZ Hoofddorp,
The Netherlands
| **T** +31(0)20-800-3817 | **E** saleseurope@vivotek.com

VIVOTEK LATAM

Ejército Nacional No. 418 Piso 7, Oficina 711. Col. Polanco V Sección,
Alcaldía Miguel Hidalgo, Ciudad de México
| **T** + 52 55 1101 1793 | **E** saleslatam@vivotek.com

