



As with all Pro series cameras, IK10 vandal resistant rating Day & Night 3MP HD vandal resistant dome IP camera IPD6132X incorporates Sense up+, a unique technology that successfully delivers stunning video in low-light conditions. Utilizing intelligent image signal processing, AGC control, and 3D Noise Reduction, this model successfully delivers the ultimate low-light image without motion blur. The IPD6132X is capable of producing four independent video streams, different streams can be set for different applications, depending on the individual user requirements. The IP67-rated housing is designed to help the camera body withstand rain and dust and ensures operation under a multitude of harsh weather conditions.

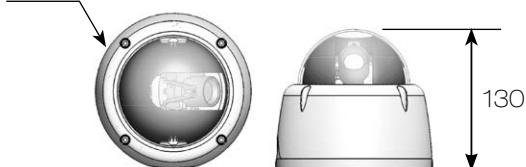
FEATURES :

- Full HD 3.27 megapixel CMOS image sensor
- True H.264 AVC/MPEG-4 part 10 real-time Video compression
- H.264 and Motion JPEG multi-profile Video streaming
- 3D Noise Reduction (MCTF)
- 2D WDR function
- Digital PTZ supported
- Face / tampering / audio / motion / alarm detection
- Impact Resistant Polycarbonate Dome Cover
- Day & Night (IR cut removable)
- 2-way audio supported
- Digital I/O : 1 in, 1 out
- ONVIF supported

DIMENSIONS : (Unit : mm)

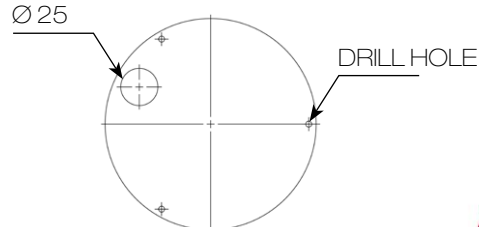
Ø145 x 130

Ø 145



INSTALLATION HOLE SITE DIAGRAM :

Ø 25



SPECIFICATION :

Name	Day & Night 3MP HD Vandal Resistant Dome IP Camera		
Model	IPD6132ESX3.6		
Lens	Focal length	3.3 – 12 mm	
	Iris	F1.4	
	Angle of view	H	79.3° – 29.8°
		V	59.4° – 22.4°
D		99° – 37.3°	
Pick up element	1/2.8" CMOS image sensor		
Effective pixels	2096 (H) x 1561 (V) = 3,271,856 (pixel)		
Chip size	7.96mm (H) x 7.61mm (V)		
Scanning system	Progressive scan		
Infrared cut filter	Auto / schedule / day (color) / night (mono)		
Min. illumination	0.15 Lux at F1.4 (Low light mode)		
White balance	Auto / tungsten / indoor / fluorescents1 / fluorescents2 / outdoor1 / outdoor2		
Back light compensation	Off / on		
Electrical shutter	1/30s – 1/8000s		
Sense up	Off / 1 frame / 2 frames / 3 frames / 7 frames		
Sense up +	Yes		
Auto gain control	36 dB variable gain		
3D Noise Reduction	Off / 1 – 32 selectable		
2D WDR	Off / auto / x2 / x3 / x4		
Privacy masking	Off / on (4 zones)		
Image effects	Brightness, Contrast, Hue, Saturation, Sharpness, Mirror, Flip		
Live Video output	CVBS 1.0Vp-p, 75 ohm, RCA connector		
Audio in / output	Mono, 1.4 Vp-p , 50 K Ω , terminal connector		
IP rating	IP67		
Vandal resistant rating	IK10		
Operating temperature	-40°C – +50°C (-40°F – 122°F)		
Dimension	Ω 145 x 130mm		
Weight	960g		
Power supply	DC12V \pm 10% / PoE (IEEE 802.3af compliant)		
Power consumption	DC12V, 6W / PoE, 7.5W		

Network		
Video compression	H.264 , Motion JPEG	
Resolution	3MP(2048 x 1536), 1080P(1920 x 1080), 720P(1280 x 720), D1(720 x 480), CIF(352 x 240)	
Multiple profile	Profile #1	H.264 : up to 30 FPS @ 1920 x 1080, MJPEG : up to 30 FPS @ 720 x 480
	Profile #2	H.264 : up to 30 FPS @ 1280 x 720, MJPEG : up to 30 FPS @ 352 x 240
	Profile #3	H.264 : up to 30 FPS @ 1920 x 1080, MJPEG : up to 30 FPS @ 1280 x 720
	Profile #4	H.264 : up to 30 FPS @ 720 x 480, MJPEG : up to 15 FPS @ 1920 x 1080
	Profile #5	H.264 : up to 15 FPS @ 2048 x 1536, MJPEG : up to 15 FPS @ 720 x 480
Video streaming	RTP/HTTP, RTP/TCP, RTP/UDP, Multicast	
Video bitrate	128Kbps – 5Mbps	
	Frame rate and bit rate controllable on-the-fly	
	VBR / CBR / GOP supported	
Security	Base64 HTTP encryption	
	Multiple user access levels with password protection	
	10 user accounts available	
Users	8 simultaneous users	
ePTZ & digital zoom	Yes, ROI is supported	
OSD	Text overlay for date, time, and camera name	
Alarm function	Alarm / motion / tampering / face / alarm detection triggering recording into SD card	
	Image upload over FTP and E-mail by face / tampering / audio / motion detection	
CPU, memory	Embedded SoC ARM11, 528MHz, 256MB DDR2, 256MB flash memory	
Maintenance	Firmware update via HTTP	
	Firmware available at web site	
Network interface	10Mbps / 100Mbps Base-T, RJ-45	
PC requirement	OS : Windows 2000, Windows XP, Windows Vista, Windows 7, Windows 8	
	Browser : Windows Internet Explorer 6.0 or above	
	CPU : intel pentium 4 1.8GHz or above	
Network protocols	RAM : 1GB or above, independent display card	
	IP, TCP, UDP, HTTP, SMTP, NTP, DDNS, UPnP, FTP, ARP, DHCP, PPPoE, DNS, RTSP, RTCP, Telnet, ICMP, IGMP, ONVIF Profile S, SNMP, SIP, Bonjour	
Mobile phone	iPhone, iPad, and Android support	
System integration	ONVIF & LILIN HTTP API	
Central management system	CMX 3.6 / NAV 1.0 support	
Video display	LILIN Universal ActiveX & LILIN Java Applet	
OS	Embedded Linux 2.6.32	
Two-way audio	G.711 / PCM	
SD card recording	Support Micro SD/SDHC card for circular recording (card is not included)	
Alarm input / output	Digital 1 input (TTL, +3 – 5VDC) / 1 Output (MOS Relay contact N.O., Load max. 40VDC/300mA)	

