



## SR7424X / SR7428X

DAY & NIGHT 1080P 60 FPS HD VARI-FOCAL IR IP CAMERA



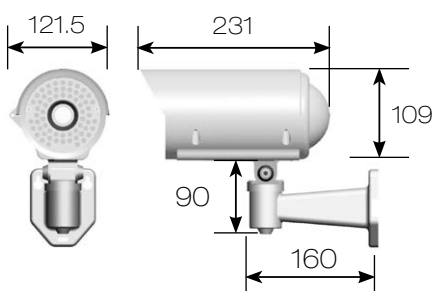
LILIN S Series cameras – SR7424X and SR7428X are best-in-class IP cameras, designed for a variety of outdoor and indoor applications. From LILIN's powerful latest technology, the S Series cameras have an ultra fast frame rate of 60 FPS at 2 megapixel 1080P resolution, this results in crystal clear images. Its IP66-rated housing protects the SR7424X/ SR7428X camera body against dust and rain. IP66 rating ensures operation under harsh weather conditions. Cameras are incorporated with a progressive scan MOS sensor with 0.1 lux at F1.4 low light mode capability, S Series camera – SR7424X and SR7428X are able to capture fast moving objects during daytime and nighttime. The S Series cameras support high performance H.264 and Motion JPEG compression technology, and offers smooth video quality up to 60 FPS at 1080P. Using 60 FPS at 2 megapixel 1080P resolution, can be particularly beneficial when viewing moving objects to ensure pictures are kept sharp.

### FEATURES :

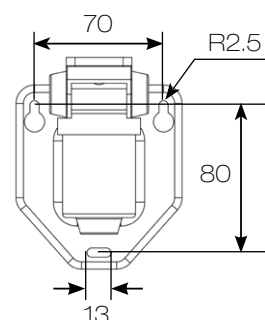
- Full HD 2.0 megapixel MOS image sensor
- 60 FPS @ 1080P True H.264 AVC High Profile video compression
- H.264 and Motion JPEG multi-profile video streaming
- 3D Noise Reduction (MCTF) / HDR function up to 120dB
- Defog function
- Digital PTZ supported
- Tampering / Audio / Motion detection alarm function
- Cable managed housing and bracket
- High efficiency IR LED, radiant distance up to 45m
- Day & Night (IR cut removable)
- 2-way audio supported
- Digital I/O : 1 in, 1 out
- ONVIF supported

### DIMENSIONS : (Unit : mm)

Body : 121.5 x 109 x 231 (W x H x D) Bracket : 160(L)



### INSTALLATION HOLE SITE DIAGRAM :



## SPECIFICATION :

Name		Day & Night 1080P 60 FPS HD Vari-Focal IR IP Camera	
Model		SR7424EX3.6	SR7428EX3.6
Lens	Focal length	3.3 – 12 mm	
	Iris	F1.4	
	Angle of view	H	79.3° – 29.8°
		V	59.4° – 22.4°
D		99° – 37.3°	
Pick Up Element		1/2.86" MOS image sensor	
Effective Pixels		1952 (H) x 1266 (V) = 2,471,232 (pixels)	
Chip Size		5.346mm (H) x 3.336mm (V)	
Scanning System		Progressive Scan	
Infrared Cut Filter		Auto / Schedule / Day (Color) / Night (Mono)	
Min. Illumination		0.1 Lux at F1.4 (Low Light Mode) / 0 Lux with IR LED ON	
White balance		Auto / Tungsten / Indoor / Fluorescents1 / Fluorescents2 / Outdoor1 / Outdoor2	
Back light compensation		Off / On	
Electrical Shutter		1/30(1/25)s – 1/30000s	
Sense up		Off / 1 Frame / 2 Frames	
Sense up +		Yes	
Auto gain control		54 dB Variable Gain	
3D Noise Reduction		Off / 1 – 32 Selectable	
2D WDR		Off / Auto / x2 / x3 / x4 (by normal mode)	
High Dynamic Range		Up to 120dB (by HDR mode, 2 shutter line interleave)	
Privacy Masking		Off / On (4 zones)	
Image Effects		Brightness, Contrast, Hue, Saturation, Sharpness, Mirror, Flip, Defog	
Live Video Output		CVBS 1.0Vp-p, 75 ohm, BNC connector	
Audio In / Output		Mono, 1.4 Vp-p , 50 KΩ , Terminal connector	
IP Rating		IP66	
Window		Ø92 Heat Resistant Glass	
Infrared LED	Peak wavelength	850nm	
	Beam spread	30°	
	Radiant distance	45M	
Operating Temperature		-40°C – +50°C (-40°F – 122°F)	
Dimension		Body : 121.5mm(W) x 109mm(H) x 231mm(D) , Bracket : 160mm(L)	
Weight		1700g	
Power Supply		AC24V (±10%)	AC100 – 240V (±10%)
		PoE+ (IEEE 802.3at compliant)	
Power Consumption		15W ( PoE+, 16.5W )	

Network	
Video compression	H.264 Main and High Profile , Motion JPEG
Resolution	1080P(1920x1080), 720P(1280x720), D1(720x480), CIF(352x240)
Frame Rate	Dual-stream mode, H.264 : up to 60 FPS @ 1920 x 1080, Motion JPEG : up to 30 FPS @ 720 x 480 HDR mode, H.264 : up to 30 FPS @ 1920 x 1080 , Motion JPEG : up to 30 FPS @ 720 x 480
Video Streaming	RTP/HTTP, RTP/TCP, RTP/UDP, Multicast
Video bitrate	128Kbps – 12Mbps
	Frame rate and bit rate controllable on-the-fly
	VBR / CBR / GOP supported
Security	Base64 HTTP encryption
	Multiple user access levels with password protection
	10 user accounts available
Users	8 simultaneous users
ePTZ & Digital zoom	Yes, ROI is supported
OSD	Text overlay for date, time, and camera name
Alarm function	Alarm / motion / tampering / audio detection triggering recording into SD card Image upload over FTP and E-mail by tampering / audio / motion detection
CPU, memory	Embedded SoC, 1.2GHz Dual ARM Cortex-A9 & 600MHz ARM11, 1GB DDR3, 256MB flash memory
Maintenance	Firmware update via HTTP
	Firmware available at web site
Network Interface	10/100/1000 Mbps Base-T, RJ-45
PC requirement	OS : Windows 2000, Windows XP, Windows Vista, Windows 7, Windows 8
	Browser : Windows Internet Explorer 6.0 or above
	CPU : Intel Core 2 Duo E6400 2.13GHz or above
	RAM : 2GB or above, Independent Display Card
Network protocols	IPv4, IPv6, TCP, UDP, HTTP, SMTP, NTP, DDNS, UPnP, FTP, ARP, DHCP, PPPoE, DNS, RTSP, RTCP, Telnet, ICMP, IGMP, ONVIF Profile S, SNMP, SIP
Mobile phone and PDA	iPhone, iPad, and Android support
System Integration	ONVIF & LILIN HTTP API
Central management system	CMX 3.6 / NAV 1.0 support
Video display	LILIN Universal ActiveX & LILIN Java Applet
OS	Embedded Linux 3.8.0
Two-way audio	G.711 / PCM
SD card recording	Support Micro SD/SDHC/SDXC card for circular recording (card is not included)
Alarm input / output	Digital 1 input (TTL, +3 – 5VDC) / 1 Output (MOS Relay contact N.O., Load max. 40VDC/300mA)

