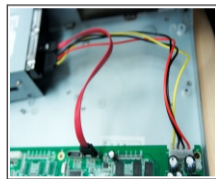


DVR Quick Start Guide Welcome! Let's get started.



Available on the App Store | Google play

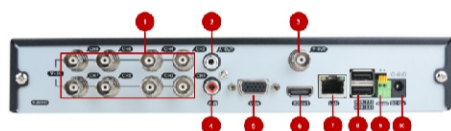
LIVE REMOTE MONITORING THROUGH SMART PHONES TABLETS & PCs



04 Install the HDD plate back into DVR and close cover of the DVR.

NOTE: The new installed HDD should format before recording.

C Get to know the Rear Panel

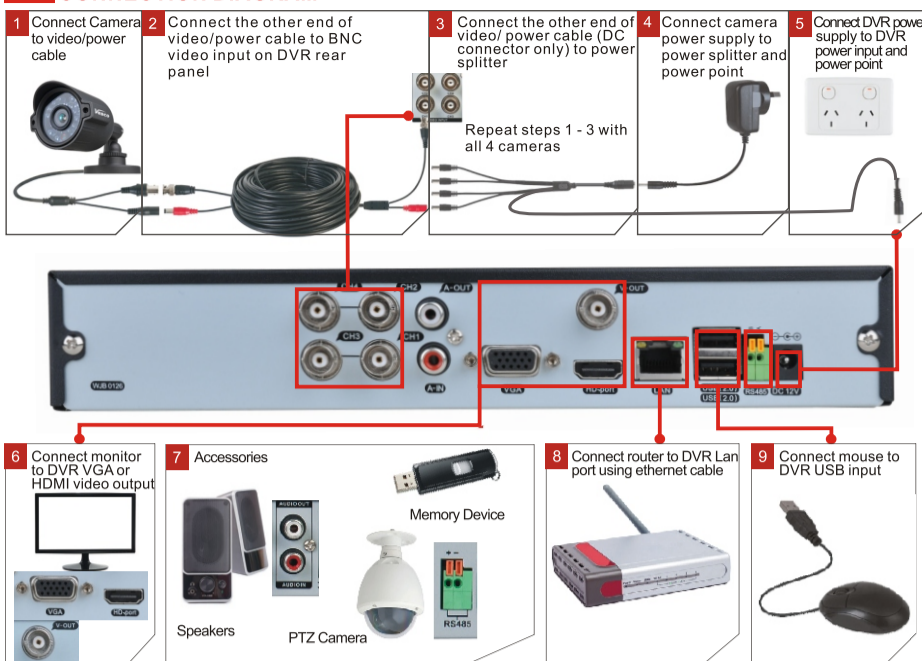


- 1 - VIDEO IN: Video input from up to 4 cameras
- 2 - AUDIO OUT: BNC Audio output for amplified speaker
- 3 - VIDEO OUT: BNC connector for TV or Monitor
- 4 - AUDIO IN: Audio input
- 5 - VGA: VGA output for 19" or larger monitor
- 6 - HDMI: HDMI video output
- 7 - LAN: Network(ethernet) port
- 8 - USB PORTS: For mouse & external USB backup
- 9 - RS485: RS485 for keyboard or PTZ control
- 10 - DC IN: Power input for 12V DC power supply

03

Section 1 Hardware

A CONNECTION DIAGRAM



01

02

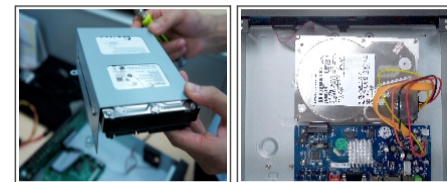
B HARD DISK INSTALLATION

If you have purchased a DVR or kit with a HDD, Skip this step.

01 Remove the screws on the rear panel and side panel, lift the top panel of the DVR up from the back, and slide it towards the back of the DVR to remove it.



02 Install and fix the HDD with the screws into the bottom panel of the DVR



03 Connect the SATA data and power cable to the HDD and the mainboard

02

Section 2 System

NOTE

- 1.The system will pop up a Wizard with the cloud service when you turn on the DVR. Click on "Next" and "OK" to exist the Wizard.
- 2.Right click on the screen and you can access to the instant menu bar on the button.
- 3.When you accessing to the main menu, right click on the mouse you can get back to the previous page.

D HDD Manage

HDD Manage allows you to format the HDD for the new HDD and installed at first time. Access **Main Menu>System**, select on the HDD Manage icon and access to the HDD manage menu



The DVR will detect the new HDD and you will see the R&W Disk from the list. Select the R&W Disk>click on Format HDD>select"OK"to delete all data. The interface will be frozen for a few seconds, please wait a few second and waiting the system to restart.

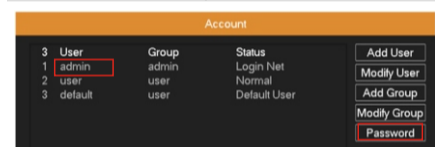
04



E Account

This option allows you to add/modify the users of the DVR. You can modify the password for the new DVR, access to **Main menu>System>Account** and select the user "Admin" and click on the "Password" option and enter the new password, please note that the default password is **blank**. When finished the new password and click the "App" and then "OK" to complete the modification.

NOTE: The default user "admin" is not allowed to modify. You can add a new user for your personal name or other name if you want.



Select "admin" from the Name as following, leave blank for the old password. Enter the new password and confirm. Click on "APP" and "OK".

05

Section 3 The DVR Setup

F General Configuration



- Language** - Choose a system language.
- Video Standard** - Select the correct video standard for your country. USA, Canada is NTSC.
- Resolution** - Select a resolution that is suitable for your HDTV or monitor. 1920*1080 will give you the best display resolution quality.
- System Time** - Select the time zone relevant to your region.
- HDD Full** - Select HDD type by stop or overwrite.

REMIND: After modify the settings, please click App and then ok The DVR will restart after changing the language

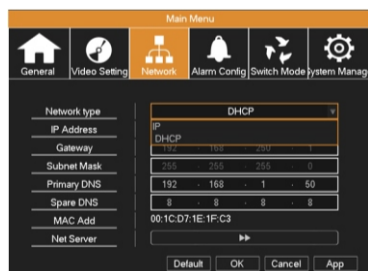
06

G Network Setup

01 Right click on the screen to popup the menu bar. The first icon means Main menu. The 8th icon means to restart the DVR.

- 1.Main Menu
- 2.Quick Play
- 3.Record Mode
- 4.PTZ
- 5.Color Setting
- 6.Output Adjust
- 7.System Info
- 8.Restart System
- 9.View 1
- 10.View 4
- 11.Exit Menu

02 Access **Main Menu > Network>Network type> Select DHCP** (Read more on page 3)



03 Select "DHCP" on the drop down of the box and click "App" then click "OK". The DVR will be automatically assigned a unique IP address. Make sure the router also enables DHCP.

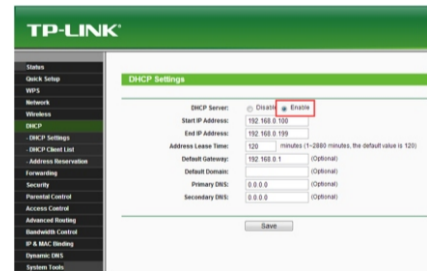
07

Please check the network status on the menu, right click on the screen and pup up the menu bar > click on the "info" icon and select the Network Status.

DHCP: (Dynamic Host Configuration Protocol) is a system where one device on your network (usually a router) will automatically assign IP addresses to devices connected to the network.

NOTE: The DVR will match the IP address about 5-10 mins according to your local network

NOTE: If the DVR cannot get the IP address automatically, you can restart the DVR and check the network status again.

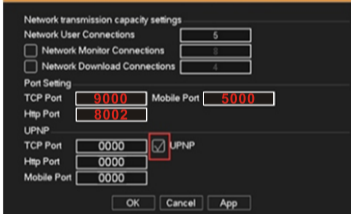


NOTE: The interface of the router here only for reference, each router was with different interface.

04 Access **DVR Main Menu > Network> Net Server >double click "Net transmission capacity, port, UPNP">Enable UPNP>App>OK**

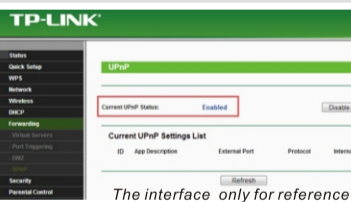
08

(Port Range: 0-65535, recommend to set the **TCP port to 9000, Mobile port to 5000 and Http port to 8002**)



The DVR will auto configure the port forwarding of media, HTTP & mobile ports on the router. Make sure the router also enables UPNP function.

NOTE: This is the port that the DVR will use to send information through. The most important things are: You'll need to enable UPNP on your router so your router can selectively open these ports, allowing the DVR to communicate via the Internet.



05 The DHCP should have the same information with the DVR.

09

H Recording

Access to the menu(Right click on the screen), and click on the third icon to pop up the Record Mode.

Please check current channel status: " " means it is in recording status. (The default setting is tick 4CH with auto mode)



Schedule: It records according to the parameters in **Main Menu>Video Setting>Record Scheme**
Manual: Select the Manual recording and the corresponding channels are recording no matter the channel in any state.
Off: Select off button to turn off all the recording setup.

Section 4 P2P Access

Simple way to remote access for Mobile device & Web

I Mobile Access

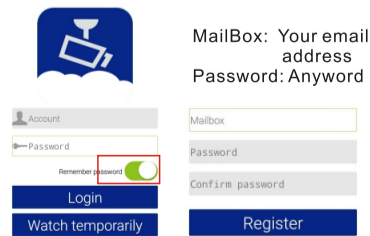
01 Access to **Main Menu>System>P2P QR Code >Click the check box>OK** Make sure the "Connect status" is "Success".

10



02 Download and install app "HDIVS" from App Store or Google Play. Or you can scan QR code from **Main Menu>System>P2P QR Code** to download.

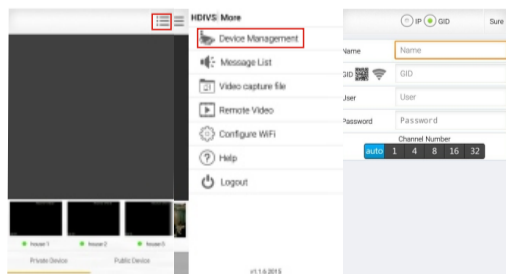
03 Select "Register an Account" on the login interface to register an account.



04 Enter your account and password to login

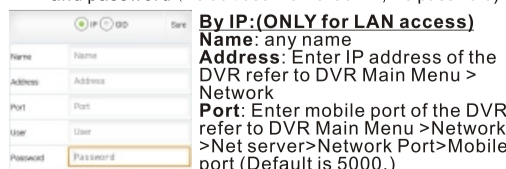
05 Select " " "Device management" to click the add icon on the right top, select the device by "GID"

11



By GID

Name: any name
GID: Click to Scan QR code refer to DVR
Main Menu >System>P2P QR code> UIDID or you can enter the Serial Number manual into GID bar
User name and password: Enter DVR user name and password (Default user name: admin; No password)

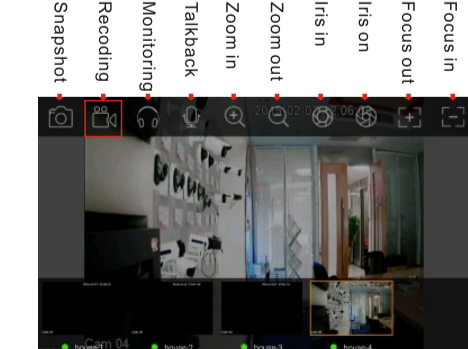


By IP: (ONLY for LAN access)
Name: any name
Address: Enter IP address of the DVR refer to DVR Main Menu > Network
Port: Enter mobile port of the DVR refer to DVR Main Menu > Network >Net server>Network Port>Mobile port (Default is 5000.)

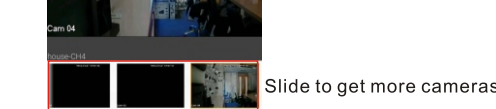
User name and password: Enter DVR user name and password (Default user name: admin; no password)

12

06 To rotate your mobile phone to horizontal screen and you will get more menu on the top. Click on the icon to enable the function, click the icon again to disable the function. For video recording, you can select the camera and click on the recording icon to start recording.

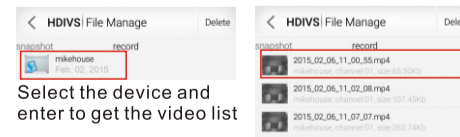


07 Return to the main menu, select the camera you want to preview and it will auto connecting to the DVR. Slide the camera to preview more channels.



13

08 Local Video Playback for Mobile Device select the "Video capture file". You'll see the "snapshot" and Record. Using your finger to slide to the video, Select the video file to play.



Select the device and enter to get the video list

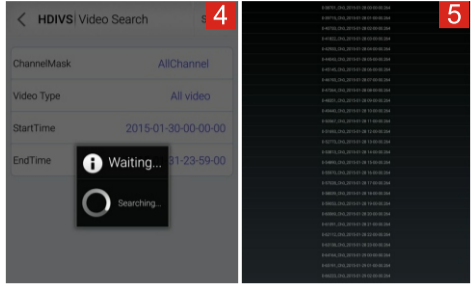
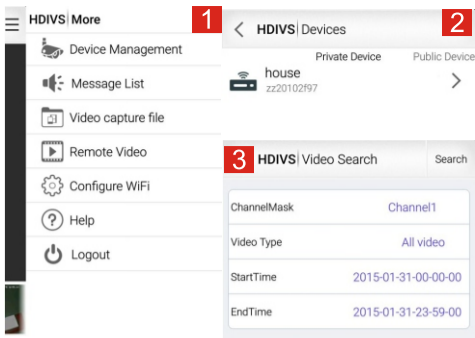
09 Remote Video Playback from the DVR by Mobile Device

- ▶ Click the Remote video on the following (Image 1)
- ▶ Access to the name of your DVR (Image 2)
- ▶ Click on the name to search the videos
- ▶ Select the Channel mask (you can select all channels), select the start time and the end time (Image 3)
- ▶ Click the search menu on the top of the right (Image 4) and waiting to searching the videos
- ▶ The recorded video list was shown on the Image 5 and select the video from the date you want to playback.

Refer the images on page 15

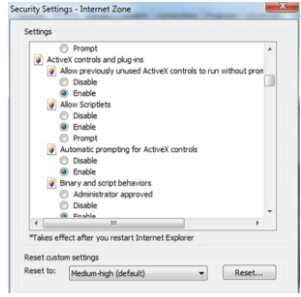
14

For more information about recording, refer to the manual on the CD



B Web Access

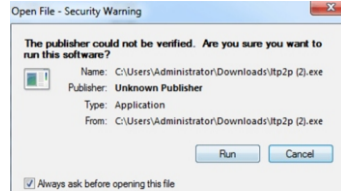
01 Setup the Internet Explorer security. (We recommend you to use the latest IE browser) Run Internet Explorer and go to Internet Options, choose Security Tab and click on Custom level, find "Download unsigned ActiveX controls" and select prompt, then find "Initialize" and enable all the ActiveX options, click OK and restart Internet Explorer.



02 Run Internet Explorer and go to <http://hdvr.ivs168.com/>



Download the ActiveX from the as shown on "Download the ActiveX" [Download the ActiveX](#) The ActiveX will popup automatically or you can download it manually.



Save the ActiveX file and running the ActiveX software, click on Run and click on Next to install the file.

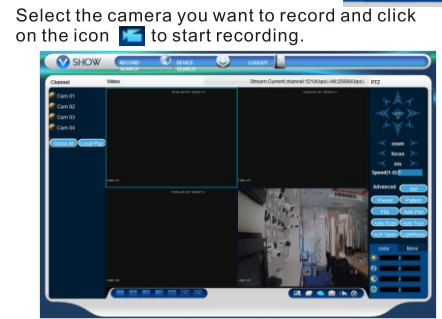
NOTE: Make sure the all the browsers are closed before running the ActiveX.

After installing ActiveX, choose connection by "Device" User Device
UID: Enter the Serial number into "UID" which refer to DVR Main Menu >System>P2P QR code > Serial Number.

Password: Enter the password of the DVR. The default password is blank, if you've setup the new password of the DVR and please enter the new password you've setup.

NOTE: Make sure the ActiveX is installed successful, otherwise you should click "Download the ActiveX" to install manually.

03 Recording by P2P web browser When you login the <http://hdvr.ivs168.com>, please click on the "open all" icon on the left, and you can see the recording icon on the right bottom



For more information about recording, refer to the manual on the CD

Section 5 ISS PC and ISS mobile

Advance mode for professional user, this section is mostly to view more DVR channels in one software

A ISS PC

Access **Main Menu > Network>Network type> Select IP**
Modify the IP Address and Gateway to match your Router IP address

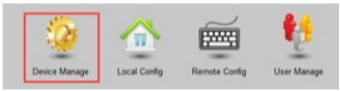
For example: If your router's IP address is 192.168.3.1, then a suitable unique IP address for your DVR will be 192.168.3.xxx(1-255 and make sure the IP does not conflict) and gateway will be 192.168.3.1

NOTE: The above IP address just for a sample purpose

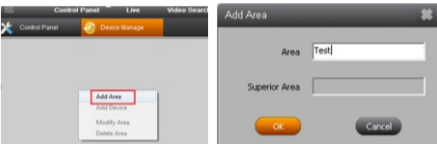


B ISS Operation

- 01** Install the "ISS" software from the CD or you
- 02** Open "ISS" and log in with default user name "admin" and no password.
- 03** Select "Device Manage" from the "Control Panel"



04 Right click and select the "Add Area" > enter any name (E.g. "Test")> OK



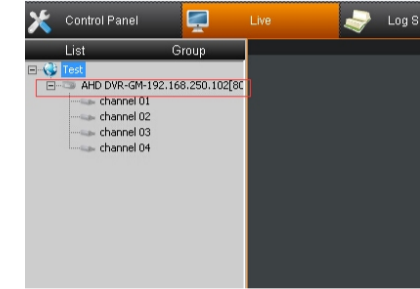
05 Right click on "Test" and select "Add Device".



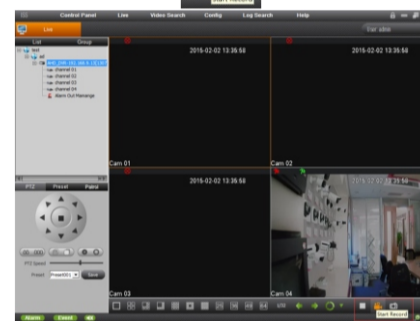
06 Click "Search Device" to find the devices in the LAN, selects the device in the search list and click "Add" icon. Go back to the control panel and click on the live icon to view the cameras



07 The added DVR will appear on the Device List (Control Panel >Live). Double click on the device to connect the DVR and view the list of camera channels. Move the mouse on the channel list and double click on each camera channel to start live monitoring.

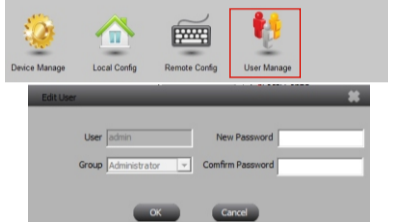


08 The recording icon was on the right bottom of the live interface as shown below, select the camera and click on the recording icon to start recording



09 Modify the password: Access to Control Panel >User Manager

Select the User "admin" Click on the modify icon and popup a window to enter the new password.



For more information about recording, refer to the manual on the CD

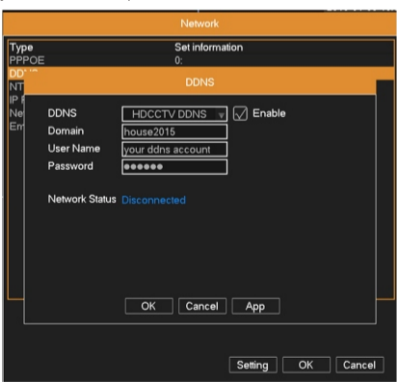
C DDNS Setup

You should deal with a DDNS
We recommend using **HDCCTVDDNS** as your DNS service. This is a free service for DVR owners, which we directly support.
To create an account with DDNS, go to: <http://www.hdccctvddns.com> and click the Register button.
Follow the prompts to create your account.

DDNS is not required for P2P remote access for mobile and web. If you intend to access your DVR using older IP technology you will need to configure this service.

Setup the DDNS on your DVR
Access **Main Menu > Network>Net Service>** Double click the **DDNS**

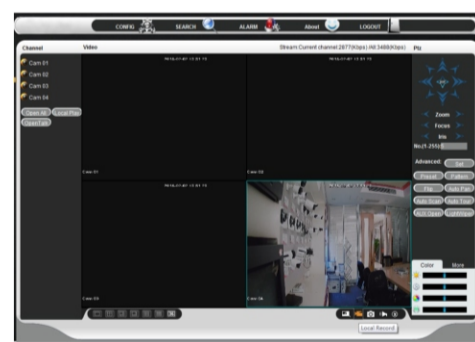
- * Select the **DDNS Type** by the DDNS list, select the "HDCCTVDDNS" and tick the **enable** icon .
- * **Domain Name:** Create the host name that you set up in your DDNS service. This is the address you use to access your network.
For example: house2015.hdccctvddns.com
- * **User Name:** Enter the user ID (Email address) you have registered from the www.hdccctvddns.com
- * **Password:** Enter the password of your registered ID from the www.hdccctvddns.com
- * Click on the "App" and "OK" icon to finish the setup.
- * Waiting the network status of DDNS to be connected, normally you have to wait a few minutes according to your router response.



D Login ISS Web Account

Login your ID and password that you've registered from www.hdccctvddns.com and you will see the domain list, click on the domain name and it will link you to the login page of the DVR. Please enter the user and password of your DVR.
Click on the "open all" menu to connect all the cameras. You will see the recording icon was on the right of the bottom. Select the camera you would like to recording and click on the recording icon

NOTE: please use the latest version of IE browser.

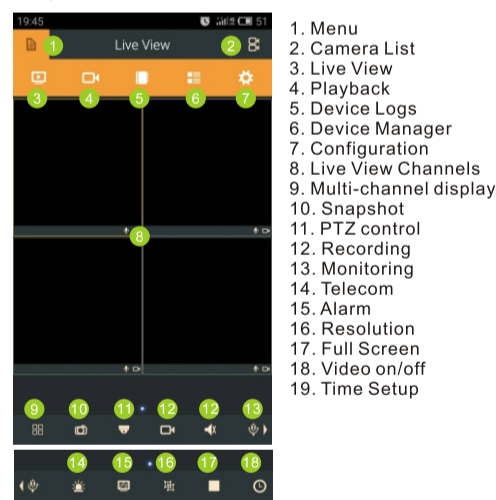


E Mobile Device

01 Download and install app "ISSMobile 2" from App store or Google Play.

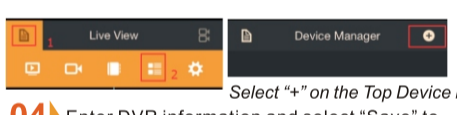


02 ISS Mobile Interface

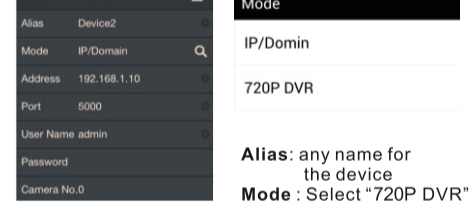


- 1. Menu
- 2. Camera List
- 3. Live View
- 4. Playback
- 5. Device Logs
- 6. Device Manager
- 7. Configuration
- 8. Live View Channels
- 9. Multi-channel display
- 10. Snapshot
- 11. PTZ control
- 12. Recording
- 13. Monitoring
- 14. Telecom
- 15. Alarm
- 16. Resolution
- 17. Full Screen
- 18. Video on/off
- 19. Time Setup

03 Run "ISS Mobile 2" and select Menu > Device Manager



Enter DVR information and select "Save" to add the device



Address: domain name and insert "domain name".hdccctvddns.com (E.g. house2015.hdccctvddns.com)

Port: Enter TCP port of the DVR refer to DVR **Main Menu >Network>Net server>Network Port > TCP port** (Default is 5000.)

User name and password: Enter DVR user name and password (Default user name: admin; no password)

05 Select "Save" at the top bar to save. If save successful, you can see the icon info from Camera No. and Start Live View will appear. If not, please check the information and network setting again.
Refer the images on page 27

23

24

25

26

06 Run "ISS Mobile 2" & select Menu>Device Manager

07 If you want to recording by the ISS Mobile, please select the camera you want to record and click on the recording icon on the bottom and you will see the relative camera will show with a recording icon, that's means this channel was start recording icon

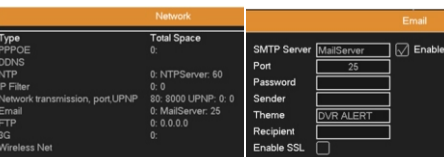
08 Access to Menu, Takes you to the Record List page where you can playback video that you have previously recorded to your mobile device. Select the time bar on the bottom to the exact recording period and click on play to play the video file.

For more information about recording, refer to the manual on the CD

Section 6 Email and Motion Detection

A Email Setup

The DVR will send the alarm information and photos to the appointed address.
Access **Main Menu > Network> Net Service>** Double click **Email**



27

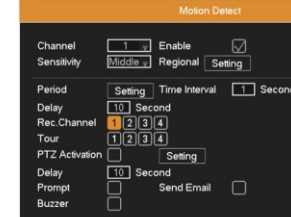
SMTP server: For example, SMTP server address of Gmail is "smtp.gmail.com".
Port: Email server port number, the default port number is 25, if you enable the SSL, the port number have to change to 465

Password: enter your password of your email.
Sender: Set the email sender address.
Theme: The subject of the message, you can set your own.

Recipient: Send an email to the appointed receivers when the alarm is turned on. You can setup the same email as the sender
Enable SSL: Decide whether to use SSL (Secure Socket Layer) protocol to login, if you enable SSL you have to change the Port number.

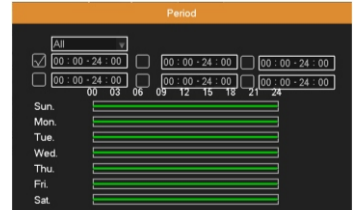
B Motion Detection Configuration

Access to **Main Menu>Alarm Set>Motion Detect**



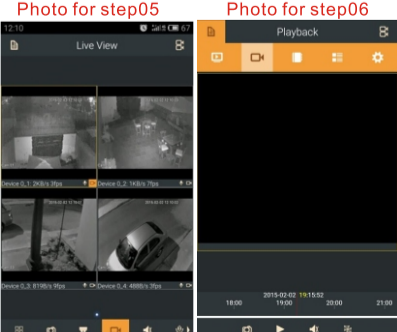
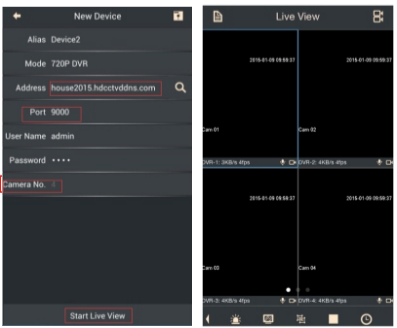
Channel: Selecting the camera you want to setup the motion detection and select the enable menu
Sensitivity: Adjust the sensitivity of motion detection (six options) according to the practical situation

Regional: Click the Setting button, use the mouse or the arrow buttons to highlight the SETUP button for the channel you wish to setup the MOTION DETECTION AREA for, and confirm by pressing select or left click. Right click on the screen to exist the setting.



Period: Click Set button, select one day or all days of detection plan, set the time period (each day is divided into six time sections), then click OK, it will start detecting only in the set range.
Time Interval: Only one alarm signal is turned on even there are several motion detection signals in this interval.
Delay: Delay a few moments to stop when the alarm state is turned off. The range is 10-300 seconds.
Record channel: Choose the recording channel (multiple options supportive). Trigger the recording signal when the alarm is turned on.
Tour: Choose the recording channel (multiple options supportive), which will tour preview with single screen when the alarm is turned on.
Prompt: means popping the alarm information dialog box in the local host computer's screen.
Send Email: means sending an email to user when the alarm is turned on.

29



27

28