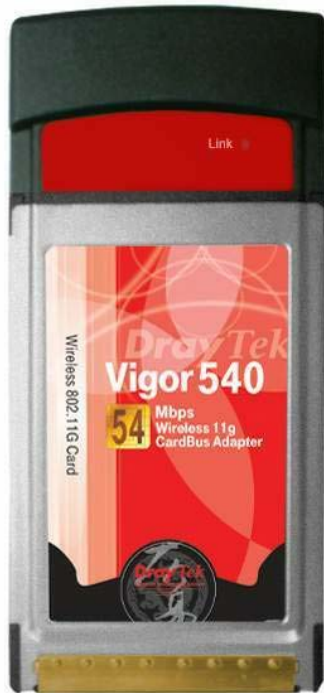


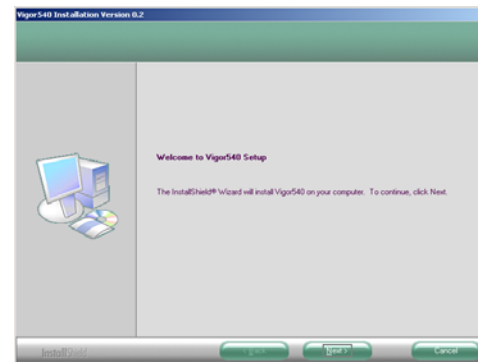
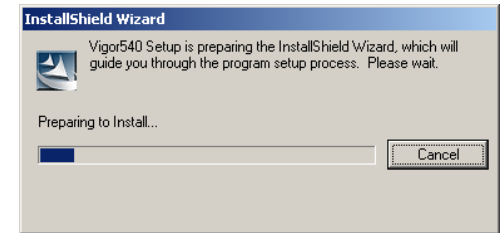
The Vigor540 Wireless LAN Card



Configuration of the Vigor540 Wireless LAN Card is dependent on the operating system. Please follow the instructions carefully. You will need to choose either **step G** or **step H** to complete the configuration for your appropriate operating system.

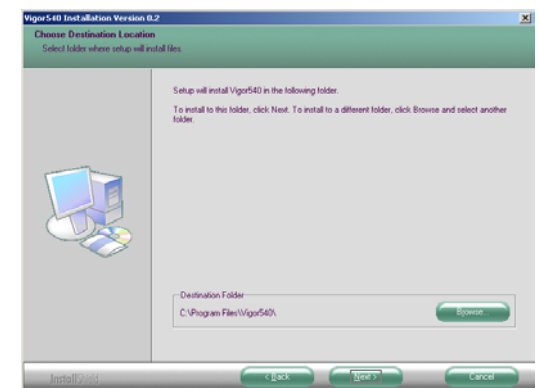
Install the WLAN Driver / Utility

A. Insert the installation CD into your CD-ROM drive. The setup program will start automatically.

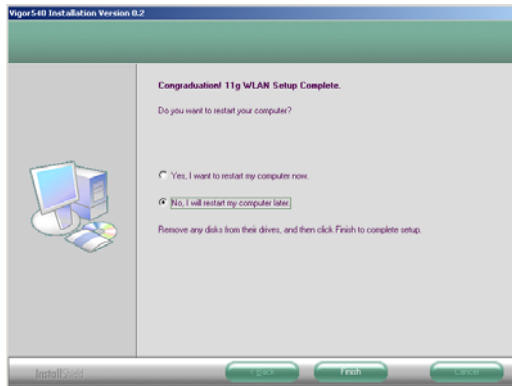
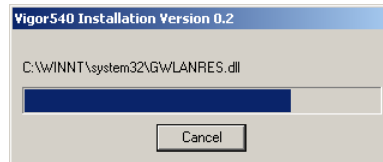


B. Click **Next** to begin the setup.

C. Select the destination folder. To install to the default folder as shown on the right, click **Next** to continue.



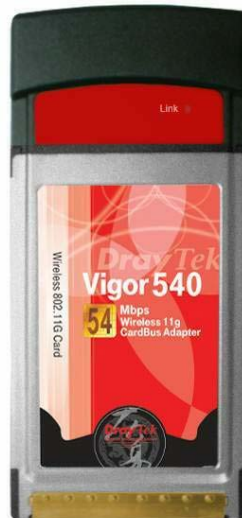
D. During the installation, drivers and utility files will be copied to your system directory.



E. Click **Finish** to complete the installation. Unless you are running Windows 98 SE or ME you will not need to restart.

Connect the Wireless Lan Card to Your PC

F. Connect the Vigor540 Wireless LAN Card to your computer's free slot.



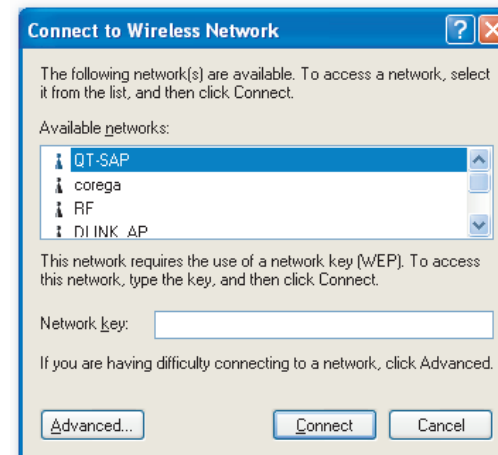
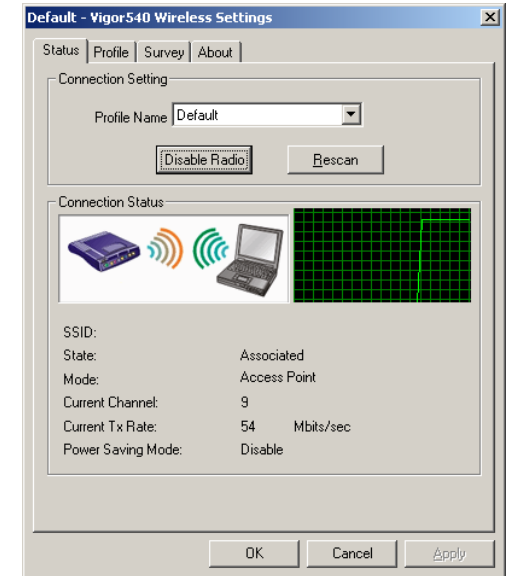
Configure the Network Settings

G. Windows 98 SE / ME / 2000 users will see a **WLAN Manager** shortcut



icon on the desktop. Click on this icon to run

the configuration utility.



H. (Windows XP Only) Windows XP uses the built-in **Wireless Zero Configuration Utility**. To run the utility, click on the **Wireless Network Connection** icon in the System Tray.

*Please refer to the User Manual for detailed configuration settings.