

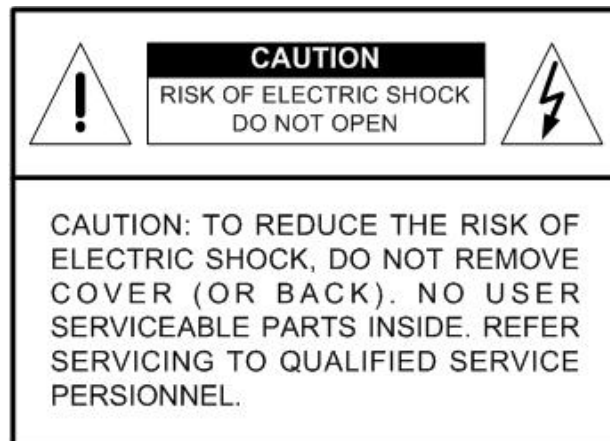
Premium H.264 NVR

User's Manual

Version 1.1

Caution and Preventive Tips

- Switch the 115/230V selector to your local voltage standard
- Handle with care, do not drop the unit
- Mount the unit in an equipment rack or place it on a solid, stable surface.
- Indoor use only. Do not place the unit in a humid, dusty, oily, or smoky site.
- Do not place it in an area with poor ventilation or in an area close to fire or other sources of heat. Doing so may damage the unit as well as cause fire or an electric shock.
- When cleaning is necessary, shut down the system and unplug the unit from the outlet before uncovering the top cover. Do not use liquid cleaners or aerosol cleaners. Use only a damp cloth for cleaning.
- Always shut down the system prior connecting or disconnecting accessories, with the exception of USB devices.



This symbol intends to alert the user to the presence of important operating and maintenance (servicing) instructions in the literature accompanying the appliance.



This symbol intends to alert the user to the presence of unprotected "Dangerous Voltage" within the product's enclosure that may be strong enough to cause a risk of electric shock.

Important Information

Before proceeding, please read and observe all instructions and warnings in this manual. Retain this manual with the original bill of sale for future reference and, if necessary, warranty service. When unpacking your unit, check for missing or damaged items. If any item is missing, or if damage is evident, **DO NOT INSTALL OR OPERATE THIS PRODUCT**. Contact your dealer for assistance.

Rack Mounting

Consult with the supplier or manufacturer of your equipment rack for the proper hardware and procedure of mounting this product in a safe fashion. Avoid uneven loading or mechanical instability when rack-mounting units. Make sure that units are installed to get enough airflow for safe operation. The maximum temperature for rack-mounted units is 40°C. Check product label for power supply requirements to assure that no overloading of supply circuits or over current protection occurs. Mains grounding must be reliable and uncompromised by any connections.

Table of Contents

1. Overview	7
2. System Setup.....	8
2.1 Position the Unit	8
2.2 Select Video Format.....	8
2.3 Connect Devices to the Unit.....	8
2.4 Rear Panel Connectors	9
3. General System Setup	11
3.1 Front Panel Introduction	11
3.1.1 LED Definition.....	11
3.1.2 Functional Keys	12
3.2 Enter OSD Setup Menu.....	14
3.2.1 User Management	15
3.3 Power On / Shutdown the Unit	16
3.3.1 HDD Auto Scan.....	17
3.4 System Date / Time Setting	18
3.4.1 Set Date / Time	18
3.4.2 Daylight Saving Time	19
3.4.3 Network Time Protocol Setup	20
3.5 IP Camera Setting	21
3.5.1 IP Camera Information.....	21
3.5.2 Connection Setup	22
3.5.3 Device Setup	23
3.5.4 Activated.....	23
3.5.5 Status.....	24
3.5.6 Copy Settings	24
3.6 Record Schedule / Quality Setting.....	25
3.6.1 Schedule Setup	25
3.6.2 Preset Record Configuration	26
3.6.3 Per Camera Configuration	26
3.6.4 Record Event Video Only	26
3.6.5 Data Lifetime Setup	27
3.6.6 Pre-Alarm Recording	28
3.6.7 Circular Recording.....	28
3.6.8 Audio Recording	28
3.6.9 Purge Data.....	29
4. Basic Operation.....	30
4.1 View Live / Playback Video	30

4.1.1	Viewing Modes	30
4.1.2	Digital Zoom.....	30
4.1.3	Freeze Live Monitoring Video	31
4.1.4	View Recorded Video	31
4.1.5	Taking Snapshots	32
4.2	Sequence Setup.....	32
4.3	Search Recorded Video	33
4.3.1	Search by Time.....	33
4.3.2	Calendar Search.....	34
4.3.3	Search by Event	35
4.3.4	Search by Text.....	36
4.3.5	Panorama Search.....	37
4.4	Video Export.....	38
4.4.1	Export from OSD Setup Menu	38
4.4.1.1	Select the External Device	38
4.4.1.2	Select Video for Exporting.....	39
4.4.1.3	Digital Signature	40
4.4.1.4	Erase Disc.....	40
4.4.2	Quick Video Export through Front Panel	40
4.4.2.1	ezBurn Introduction	41
4.4.2.2	Export Normal Video	41
4.4.2.3	Export Event Video.....	42
4.5	Dome Control	42
4.5.1	RS485 Setup	42
4.5.2	Dome Controlling Key.....	43
4.5.5	Set Preset Points.....	44
4.5.6	Call Preset Points	45
4.5.7	Run Dome Camera Tour.....	45
4.6	UPnP Function	46
4.6.1	Setting Up the NVR and the PC.....	46
4.6.2	UPnP NAT Traversal Function	47
4.7	System Log Exportation	47
5.	Remote Monitoring Software.....	48
5.1	Remote Monitoring System Requirements	48
5.2	Software Installation	49
5.2.1	Change Internet Settings	49
5.2.2	Install Remote Monitoring Software	51
5.2.2.1	Log in / Log off.....	52
5.2.2.2	Software Upgrades.....	53
5.3	Basic Operation for Monitoring Remotely	53

5.3.1	View Live Video	53
5.3.1.1	Select Display Mode.....	54
5.3.1.2	Operate Cameras with Dome Control	54
5.3.1.3	Digital Zoom of Camera Display.....	55
5.3.1.4	Manually Trigger Relay Output Devices	55
5.3.2	Instant Recording.....	56
5.3.2.1	Record Video Instantly	56
5.3.2.2	Playback Instant Recorded Video	56
5.3.3	Playback Video	56
5.3.3.1	Playback Remote Video	57
5.3.3.2	Playback Local *.drv Files	58
5.3.3.3	Playback Controls	58
5.3.4	Verify Digital Signature	59
5.3.5	Search from Event List	59
5.3.6	Take a Snapshot.....	59
5.3.7	Health Status of HDD.....	60
5.3.8	Normal and Dual Streaming.....	60
5.3.9	Remote Software Upgrade/ Reboot of Connected NVR.....	61
5.3.10	Remote Monitoring Software Troubleshooting	62
Appendix A: Recommended HDDs		63
Appendix B: Remote Controller		64
Appendix C: USB Mouse Operation		66
	Special Operation	66
Appendix D: Keyboard Access Sketch		67
Appendix E: Jog / Shuttle Control.....		68
Appendix F: IP Camera Installation.....		69

1. Overview

The **Premium H.264 NVR** is a premium network video recorder that combines the features of a time-lapse audio / video recorder, a multiplexer, and a video server to create a single security solution.

The **Premium H.264 NVR** is equipped with Power over Ethernet (PoE) ports that eased the connection to IP cameras with just one single cable covering power and network sources. The Plug and Play function helps users to automatically setup IP cameras once they are connected. IP cameras will be set to provide dual streaming to the NVR for recording and Live monitoring. In addition, the Full HD (1080P) video at local monitor display presents high quality images.

The **Premium H.264 NVR** is pre-installed with remote viewing and configuration software, which is a Web-browser plug-in allowing users to view live or recorded video images, and enables remote configuration. The remote software is stored in the **Premium H.264 NVR** and deployed over a LAN, WAN or Internet connection to remote Windows-based computers. This simplifies the installation and maintenance of the software components so all remote users are using the same software coming from the unit.

In addition, the central management software and smart phone applications also provide convenience to monitor at anywhere and anytime.

2. System Setup

The notices and introduction on system installation will be described particularly in this chapter. Please follow the description to operate the unit.

In order to prevent the unit from data loss and system damage that caused by a sudden power fluctuation, use of an Uninterruptible Power Supply (UPS) is highly recommended.

2.1 Position the Unit

Firstly, note to position / mount the NVR in a proper place and be sure to power off the unit before making any connections. The placed location should avoid hindering or blocking the unit from airflow. Enough airflow is needed to protect the unit from overheating. The maximum allowable temperature of operating environment is 40°C.

The unit utilizes heat-conducting techniques to transfer internal heat to the case, especially to the bottom side of the unit.



NOTE: Be sure the rubber feet are not removed, and always leave a space for air ventilation on the unit's bottom side.

2.2 Select Video Format

The NVR is designed to operate under either NTSC or PAL video formats. The switch is positioned on the rear panel.



2.3 Connect Devices to the Unit

This section lists some notices that should be given before making any connections to the NVR.

Connecting Required Devices

Before powering on the unit, cameras and a main monitor should be connected to the unit for basic operation.

Connecting Short-term Device

If any short-term devices shall be installed to the NVR as parts of the unit system, such as USB ThumbDrive® or any USB devices, etc., make sure those devices are connected only after the unit is powered on. The reason is because the NVR can recognize the external devices only after the power-on process is done completely.

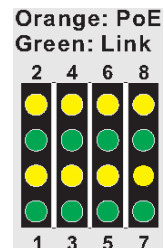
2.4 Rear Panel Connectors

There are various connectors on the rear panel for the NVR installations. The connectors are described as the followings.

LED Indication

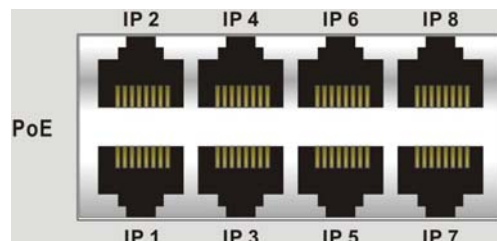
Each IP camera has two corresponding LEDs:

1. The lightened orange LEDs represent the IP camera is connected and power is supplied via PoE. When a LED is off, either the IP camera is not connected or its power supply is separately connected.
2. The blinking green LEDs represent data transmission goes from the IP cameras to the NVS. When a LED is not on, that means the IP camera is not connected.



PoE Ports

The optional PoE ports offer direct connections to four IP cameras. The IP cameras can be “plug and play” if the function is enabled in the OSD menu.



Main Audio Out

The NVR provides a main audio out connectors for connection to an audio output devices, such as an amplified speaker.



VGA Output

VGA output connectors are offered for connecting to VGA main monitors.

**Digital Output**

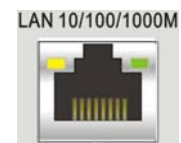
A digital output connector is provided for connection to a displaying device that transfers data digitally to show the best video quality.

Alarm I/O & RS485

The unit provides alarm I/O and RS-485 ports that offer users the flexibility required to connect the unit to the other device. The definition for pins varies when the NVRs have different channels. Refer to **Setup Guide** for detailed pin definitions.

**LAN 10/100/1000M (RJ-45)**

The NVR is capable of networking and it allows the videos to be viewed over the LAN network or the Internet by using the Internet Explorer.

**USB Connector**

There is a USB2.0 port on the rear panel for users to connect external USB devices to the unit, such as ThumbDrive[®], or a USB mouse.

**e-SATA**

Users can connect an e-SATA storage device via this port to expand HDD capacity of the NVR.

**Power Jack**

Connect the power supply cord shipped with the NVR.



NOTE: Use of other power supply cords may cause overloading.

3. General System Setup

Before operating the NVR, some general configuration should be setup first. The following subsections will introduce function keys on the front panel and general configuration of the NVR.

The regular displayed OSD information and its displayed positions are shown as following figure. Title of the channel will be displayed on the top-center of the gird, either in full-screen mode or in multiple channel mode. The current operation status and date/time information will be displayed in the status bar at the bottom of the screen. Move the cursor to any status bar icon and its description will be displayed. Refer to the **Setup Guide** for a list of status bar icons and their descriptions.

CH1	CH2
CH3	CH4
2010/12/09 04:31:22 PM	

3.1 Front Panel Introduction

The front panel controls enable users to control the unit and preset the programmable functions.

3.1.1 LED Definition

The LEDs on the front panel of the NVR are described as follows.



Network LED

The LED lights up when the NVR is connected to a network and blinks when data is being transferred.



REC LED

The LED blinks while the NVR is recording.



Alarm LED

The LED lights up when an alarm is triggered.

3.1.2 Functional Keys

This section describes the functional keys, which are for normal operation, on the front panel of the NVR.

Please refer to the **Setup Guide** for the graphical illustration of functional keys.

POWER Key

- After power cord is correctly connected, press this key to switch power on.
- Press and hold this key to quick shutdown the NVR.

CHANNEL

- In both Live and Playback modes, press the CHANNEL key to view the corresponding video in full-screen. The number of the CHANNEL keys corresponds to the number of cameras supported by the unit.
- In Dome Control mode, the key “1” is used to access the Set/Go preset menu; the keys “11” ~ “16” are for quick access of preset points 1~6.

COPY

In Playback mode, press this key to select the start and end time of the export video. Refer to section **Video Export** for detailed information.

IP

Press this key and it will be lightened up. Then press channel keys to show full-screen display of IP Camera channels. Press this key again to exit IP Camera viewing mode, and the light of the key will be off.

DOME

Press the key to enter Dome Control mode. Please refer to Section **Dome Control** for detailed controlling operation.

MODE

Press repeatedly to select desired main monitor display format. According to the monitor displaying type, there are several available viewing modes: full-screen, 2-windows, and 8-windows. Refer to section **Viewing Modes** for detailed information.

PLAY

Press this key to switch between live image and playback video.



NOTE: The video of latest 5~10 minutes cannot be played back because the video is still saved in the buffer.

FREEZE

- Press FREEZE while viewing live image, the live video will be frozen. The date / time information shown on the monitor will continue updating, as well as the recording of video. Press FREEZE again to return to live mode.
- Press FREEZE while playing the recorded video, the playback video will be paused. Press LEFT / RIGHT to move the recorded video reverse / forward by single step. Press FREEZE again to continue playing video.

SEQ (Sequence)

Press to start automatic sequence display of video from all installed cameras.

SEARCH

In both Playback and Live mode, press SEARCH to enter the Search menu for searching and playing back recorded video by date / time, event, or text.

MENU

Press this key to enter the OSD setup menu.

Direction Keys

- In Zoom mode, these keys function as Direction keys.
- In the OSD setup menu, the LEFT / RIGHT keys are used to move the cursor to previous or next fields. To change the value in the selected field, press UP / DOWN keys.

ESC

- Press to cancel or exit from certain mode or OSD setup menu without changing the settings made previously.
- When password protection is switched off, press ESC for five seconds to lock up the system. Press ESC for five seconds again to unlock.



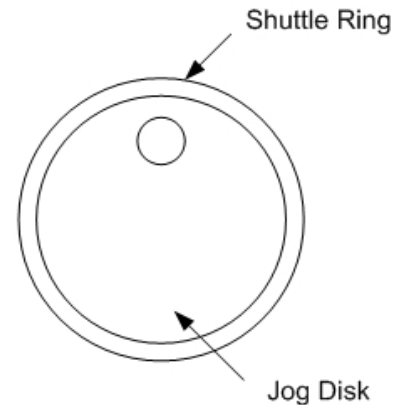
NOTE: Enter the OSD menu and go to <System> → <User Management> to enable or disable the password protection.

ENTER / ZOOM

- In OSD setup menu or selection interface, press this key to make the selection or save settings.
- In live full-screen viewing mode, press this key to view a 2× zoom image; press it again to return.

JOG / SHUTTLE (for specified models)

The jog/shuttle knob, shown as the figure on the right, is a combination of a shuttle ring with an embedded jog disk. It provides wide latitude in playback control. Note that the jog/shuttle knob is active only when the NVR is in Playback mode.



Please refer to **Appendix F: Jog / Shuttle Control** for further information.

3.2 Enter OSD Setup Menu

The configuration of the NVR can be customized through the intuitive Graphical User Interface (GUI) OSD setup menu. Collaborating with a USB mouse, setting up the NVR can be easy as operating on a PC. Press MENU and select an account to login.

The next step is to enter a corresponding password. The preset password for the administrator account “admin” is “1234”.



NOTE: It is strongly suggested to change the preset password to prevent unauthorized access to the unit.

An icon displayed at the status bar will show the authority level of the account. Under logout condition, the icon will be a guest icon. When an account is logged in, its authority level number (1~8) will be shown.

Before completely logout, other functions can also be accessed without having to login again. There are two ways to logout: manually logout by pressing ESC key at Live mode, or auto logout when keys are not pressed for 5 minutes at Live/ Menu mode.

3.2.1 User Management

The NVR provides the option to create up to seven sets of usernames and passwords with customized authority, excluding the preset “admin” account. From the Main Menu, select <System> → <User Management> and the menu is as the following.

User Management	
Password Protection	On
Account Setup	
Permission Setup	
Load Default Setting	No

Password Protection

Select <On> to request for username and password for accessing functions listed in Authority Setup menu, or select <Off> to allow free access.

Account Setup

Setup customized account, password, and privilege level in this menu. The account is case sensitive. The privilege level rank from level 1~8, and level 8 has highest privilege. Alternatively, select <Disable> to stop using the account. A second password can also be specified, if required.



NOTE: The username and privilege level of the preset administrator account “admin” cannot be changed.

Permission Setup

Setup the allowed authority level for accessing the functions listed in this menu. The functions include: Playback/Search, Hidden Camera, Dome Control, Export Data, Menu Access, System Setup, Monitor Setup, Camera Setup, Record Setup, Sequence Setup, Event Setup, Database Setup, Configuration, PoE Setup, and Shutdown. In accordance with users' privilege level defined in <Account Setup>, the authority level here also ranks from levels 1~8, with level 8 as the highest level. Users will be able to access any function that is set to their equivalent level or lower. Alternatively, select <DISABLE> to allow free access.



NOTE: The “Menu Access” cannot be set to <Disable>.

When the account does not have authority to access certain functions, an error message will be displayed on the screen.

Load Default Setting

Select <Yes> to load the default setting.

3.3 Power On / Shutdown the Unit

If the NVR must be shutdown for any reason, please use the proper shutdown and power on procedures to avoid damaging the NVR.

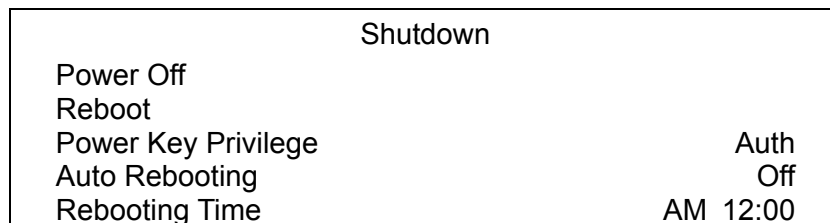
To Power On the Unit:

Check the type of power source before plug in the power cord to the NVR (the acceptable power input is between AC110V~AC240V), and power on the unit using the power key on the front panel.

The color bar and system checking information will be shown on the monitor and then disappear when the unit has been completely powered up.

To Restart / Shutdown the Unit:

Press MENU and input the username and password that has sufficient authority to access the OSD setup menu. Select <Shutdown> in Main Menu and press ENTER to enter the Shutdown menu, which displays as follows.

**Power Off**

Select this item to shut down the unit. Do not remove the power during shut down until the message "You can safely turn off NVR now!" displays.

Reboot

Select this item to reboot the unit. The color bar and system checking information are displayed on the monitor until the unit is completely restarted.

Power Key Privilege

This item allows users to define quick shutdown actions after long pressed the Power key. <Auth> will require login of authorized account when protection is enabled, <Confirm> will require confirmation before quick shutdown, <Direct> will directly shutdown the NVR, and <Disable> will disable quick shutdown function.

Auto Rebooting

The NVR can be set to reboot automatically once a day/week at predetermined time in order to keep the NVR system more stable. Select <Off> to disable the auto rebooting function

Rebooting Time

If the auto rebooting function is enabled, select a desired time to perform the auto rebooting function.

3.3.1 HDD Auto Scan

When the NVR found file system error while recording, the NVR will reboot and HDD auto scan will be initiated. If by any chance auto scan failed, the HDD will need to be formatted.



NOTE: If users wish to initiate HDD auto scan function for abnormal power loss as well, enter the OSD setup menu via an authorized account and access <Database> to set <Repair On Power Loss> to <On>. HDD auto scan will be initiated every time the NVR powers on if it previously loss power abnormally or if there is file system error.

Read the following troubleshooting to finish the auto scanning process.

- **Skip Auto Scan:** During the scanning process, users can press any key to skip the process.
- **Time Expired:** When the scanning process took more than predetermined time (3hrs for 1TB HDD, 6hrs for 2TB HDD, etc), the scanning process is treated as failed and will be automatically terminated. The NVR will reboot.
- **Format HDD:** If the scanning process is failed, users will be prompted to confirm format of the HDD with error. When users confirmed to format the HDD with error, login of an authorized account is required if password protection is enabled. If users select cancel or do not respond within 5 minutes, the HDD with error will be marked as a NG HDD. A NG HDD will not be counted as a part of the NVR's database. It will just stay there doing nothing.
- **Recover NG HDD:** Enter the OSD setup menu via an authorized account and access <Database>. Then select <Internal Disks> and find the NG HDD from the list. Under <Action> column, select <Format> to format the NG HDD. Then select <Add> to add the formatted HDD to the database.



NOTE: The above actions will be recorded in the system log data.

3.4 System Date / Time Setting

Users can set the current date, time and other OSD parameters in Date/Time menu (under System setup menu). The login account should have authority to access the System setup menu. In OSD setup menu, select <System> and press ENTER, then select <Date/Time> to access the Date/Time menu; the menu displays as follows.

Date/Time	
Date	2010/12/07
Time	PM 10:39:26
Time Zone	Off
Date/Time Display	1 Row
Date Display Mode	Y/M/D
Time Display Mode	12 HR
Daylight Saving Time Setup	
Network Time Protocol Setup	

3.4.1 Set Date / Time

Set Date / Time

Select <Date> or <Time> and press ENTER for adjusting the settings. LEFT / RIGHT keys are used to move the cursor to previous or next field, ENTER is for selecting, and UP / DOWN are used to change the value in the selected field.



NOTE: The new date / time setting applies to record new video. The date and time of previously recorded video will not be changed.



NOTE: If time settings have to be changed in any case, it is strongly recommended to format the HDDs to avoid database corruption.

Date / Time Display

Users are allowed to set the time OSD displays in 1 row or 2 rows. Use the UP / DOWN keys to change the setting.

Date Display Mode

This function allows user to set the OSD display type of the date. There are three options to select from: <Y/M/D>, <M/D/Y> or <D/M/Y>. “Y” represents “Year”, “M” represents “Month” and “D” represents “Day”.

Move to the item and press ENTER, the option starts blinking. Use UP / DOWN keys to change the setting.

Time Display Mode

User can set the time format to <12 HR> or <24 HR>. Use the UP / DOWN keys to change the format.

3.4.2 Daylight Saving Time

Daylight Saving Time

The item is for people who live in certain regions to observe Daylight Saving Time. Select <On> to enable, or <Off> to disable the function.

If the function is disabled, the DST Start / End time and DST Bias will be grayed out and cannot be accessed.



NOTE: If this function is enabled, the date/time information will be shown on the screen with a DST icon when playing back recorded video or searching video in the event list. “S” indicates summer time and “W” indicates wintertime.

DST Start / End

The items are used to program the daylight saving duration. Use LEFT / RIGHT keys to move the cursor to the next or previous field, UP / DOWN to change the settings in the selected field.

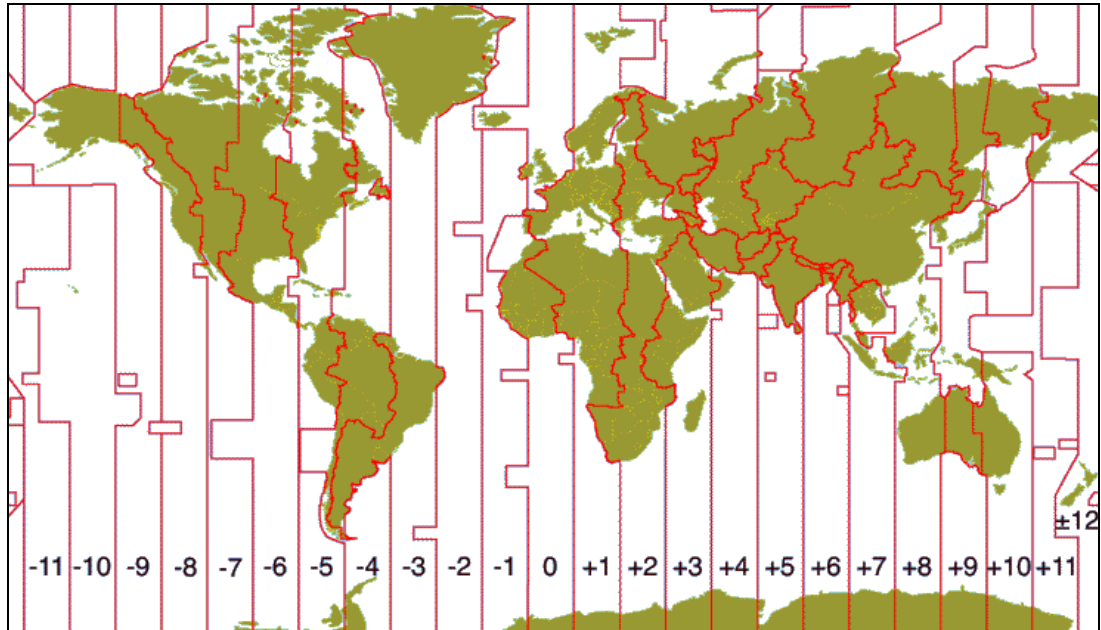
DST Bias

The item allows user to set the amount of time to move forward from the standard time for daylight saving time. The available options are in minutes.

3.4.3 Network Time Protocol Setup

Time Zone

Select **<Time Zone>** to enter the time zone. To find out the correct local time zone, please visit www.greenwichmeantime.com or refer to the following figure.



NOTE: The **<Time Zone>** must be set to the correct local time zone or the **<Network Time Protocol Setup>** will not be accessible.

Network Time Protocol Setup

After entering the time zone, the **<Network Time Protocol Setup>** option will appear. Select the **<Network Time Protocol Setup>** to set the NTP server. The default NTP server is time.nist.gov, but the user can change it to other NTP servers when desired. A list of IP addresses of the NTP servers is listed below.

129.6.15.28	129.6.15.29	132.163.4.101
132.163.4.102	132.163.4.103	128.138.140.44
192.43.244.18	131.107.1.10	69.25.96.13
206.246.118.250	208.184.49.9	64.125.78.85
207.200.81.113	64.236.96.53	68.216.79.113

After the time server is set, select **<Yes>** for **<Manually Time Sync>** to sync the time immediately. The time sync can also be updated periodically. Select **<On>** for **<Automatically Time Sync>**, and the time will be automatically synced once an hour.

3.5 IP Camera Setting

IP cameras can be connected by the PoE ports for PoE supported models, or by internet via <Camera> setup menu. When IP cameras are connected by the PoE ports, settings of the IP cameras will be automatically retrieved if the PoE PnP function is enabled.



NOTE: Go to <PoE Setup> → <PoE PnP> to enable the PoE PnP function.

The <Camera> setup menu will be shown as below.

Camera	
IP Camera Select	CH01
IP Camera Name	CH01
IP Camera Hidden	Off
Device Search	
Hostname/IP	X.X.X.X
Connection Setup	
Device Setup	
Activated	No
Status	
Copy Settings	



NOTE: If the IP camera is already activated, items <Device Search>, <Hostname/IP>, <Connection Setup>, and <Copy Settings> will be grayed out and cannot be accessed.

3.5.1 IP Camera Information

IP Camera Name

Access this item to enter the name of the IP camera to be shown on the monitor.

IP Camera Hidden

If users want to hide the display of image from the IP camera, select <On>. Note that the display in the remote monitoring software will also be hidden. Otherwise select <Off> and the live image will be shown on the monitor.

Device Search

Select this item and press ENTER to automatically search for IP cameras installed in the same LAN network to the NVR. If the IP cameras are ONVIF devices, "Brand Name/Onvif" will be shown under the "Brand" column.

Hostname/IP

Access this item to enter the hostname or IP address of the IP camera, for example 192.168.1.123.

3.5.2 Connection Setup

Enter <Connection Setup> to configure the connection and data transmission setting of the connected IP Camera. The menu will be shown as below.

Connection Setup	
Account	Admin
Password	****
Management Port	80
Main Stream Setup	
Dual Stream Setup	
IP Dome Protocol	None
IP Dome ID	0

Account / Password

Access these two items to enter a valid account name and password of the connected IP camera.

Management Port

Access this item to enter the default port of the IP camera.

Main Stream Setup

Under this menu, users can setup configuration for the main stream. First choose streaming format from <H264>, <MJPEG>, or <MPEG4>. If users will setup streaming index, port, and protocol manually, set <Advance Streaming Options> to <On> and select preferred values from the corresponding menu items. Otherwise, keep <Advance Streaming Options> as <Off> and the NVR will take care of the setting.

Main Stream Setup	
Streaming Format	H264
Advance Streaming Options	Off
Streaming Index	Stream1
Streaming Port	554
Streaming Protocol	RTP+RTSP

Dual Stream Setup

Under this menu, users can setup configuration for the dual stream. First set <Dual Streaming Support> to <Yes> and continue to the rest of the setting. If users wish to record the dual stream, choose <Yes> next to <Dual Streaming Recording>. The remaining items are the same as in <Main Stream Setup>. Choose streaming format from <H264>, <MJPEG>, or <MPEG4>. If users will setup streaming index, port, and protocol manually, set <Adv. Dual Streaming Options> to <On> and select preferred values from the corresponding menu items. Otherwise, keep <Adv. Dual Streaming Options> as <Off> and the NVR will take care of the setting.

Dual Stream Setup	
Dual Streaming Support	Yes
Dual Streaming Recording	Yes
Dual Streaming Format	H264
Adv. Dual Streaming Options	Off
Dual Streaming Index	Stream2
Dual Streaming Port	554
Dual Streaming Protocol	RTP+RTSP

IP Dome Protocol / IP Dome ID

If the connected device is an IP Dome Camera, then select an appropriate IP Dome Protocol from the provided options and setup its Dome ID.

3.5.3 Device Setup

Enter <Device Setup> to configure the basic settings of the IP camera. The basic settings include the IP camera's product name, image quality, image adjustment, etc. Set the item <Apply> to <Yes> to apply the changes.



NOTE: The <Device Setup> menu may have fewer or more menu items according to different IP camera models.

3.5.4 Activated

Access this item and select <Yes> to activate the connection to the IP camera. To deactivate the connection, select <No>.



NOTE: Once the connection to the IP camera is activated, menu items <Device Search>, <Hostname/IP>, <Connection Setup>, and <Copy Settings> will be grayed out and cannot be accessed.

3.5.5 Status

After the connection to the IP camera is activated, users can check the connection status. The menu will be shown as below.

	Status	
Model		ONVIF
Streaming Format	H264(MP)	H264(MP)
Resolution	1280×720	720×576
PPS	25.40	25.40
Bandwidth	189.34 B/Sec	51.59 KB/Sec
Pkg. lost rate	0.00%	0.00%

The information shown on the monitor is “read only”.



NOTE: For an example of step-by-step IP camera setup, please refer to **Appendix G: IP Camera Installation**.

3.5.6 Copy Settings

This item allows users to copy the settings set on the current selected IP camera to any other IP cameras. Enter this menu and select one or more cameras to copy the settings. Then select <CONFIRM> to apply the settings.

Copy Settings							
COPY TO:							
<input type="checkbox"/> 01	<input type="checkbox"/> 02	<input type="checkbox"/> 03	<input type="checkbox"/> 04	<input type="checkbox"/> 05	<input type="checkbox"/> 06	<input type="checkbox"/> 07	<input type="checkbox"/> 08
<input type="checkbox"/> SELECT ALL	<input type="checkbox"/> DESELECT ALL	<input type="checkbox"/> CONFIRM	<input type="checkbox"/> CANCEL				



NOTE: When an IP camera is already activated, it will be greyed out and cannot be selected.

3.6 Record Schedule / Quality Setting

The Record setup menu allows users to set recording quality, recording schedules, and other recording parameters. Login with a proper account to access Record setup menu. In the Main menu, move the cursor to <Record> and press ENTER; the following menu is displayed.

Record	
Record Mode Setup	
Schedule Setup	
Preset Config	Best Quality
Per Camera Config	
ezRecord Setup	
Data Lifetime Setup	
Pre-Alarm Recording	15 Sec
Circular Recording	On
Audio Recording	On
Purge Data	

3.6.1 Schedule Setup

The Schedule Setup is used to set the day and night time, or weekend recording schedule. Select <Schedule Setup> from the Record setup menu and press ENTER; the following menu is displayed.

Schedule Setup	
Day Time Start	AM 06:00
Day Time End	PM 06:00
Night Time Start	PM 06:00
Night Time End	AM 06:00
Weekend Schedule	On
Weekend Start	Fri PM 06:00
Weekend End	Mon AM 06:00

- Make appropriate changes of the start time of Day and Night Time using Direction keys.
- Press ENTER to confirm the settings or ESC to cancel.
- If a weekend record is required, select <On> to enable the Weekend Schedule in advance and then set the Weekend Start/End time.
- Press ESC to return to previous page.

3.6.2 Preset Record Configuration

The <Preset Config> is used to select the preset recording quality and frame rate. In normal circumstances, it is strongly recommended to set the preset configuration as <Best Quality>.

3.6.3 Per Camera Configuration

This function is used to set the Day / Night / Weekend PPS (Picture per Second) and Quality for each channel. The Preset Configuration must be set to <OFF> for accessing these schedules.

Per Camera Config			
Camera Select			CH1
	Day	Night	Weekend
Normal PPS	30	30	30
Normal Qlty	Mid	Mid	Mid
Event Max PPS	30	30	30
Event Qlty	Best	Best	Best
Event Act	Both	Both	Both

- First, select a Camera for setting its record configuration. The image and recording settings from the selected camera will be shown on the screen.
- Move the cursor using Direction keys and press ENTER to select an item.
- Change the value using UP / DOWN keys.
- Press ENTER to confirm the settings or ESC to abort.
- Press ESC to return to Record setup menu.

3.6.4 Record Event Video Only

If the NVR shall start recording only when alarms are triggered, follow the steps below:

- Enter the OSD setup menu with an account with appropriate authority.
- In the OSD setup menu, select <Record> menu. Move the cursor to the item <Preset Config>, and select <Event only>.

Refer to OSD Setup Manual, Section **Preset Record Configuration** for further information.

3.6.5 Data Lifetime Setup

Data Lifetime indicates the duration that a video is saved and recallable in the HDD. Only those video recorded within Data Lifetime can be displayed on the screen and played back. The video exceeded Data Lifetime will be hidden and cannot be retrieved for playback.

Data Lifetime Setup	
Data Lifetime Mode	General
Data Lifetime	0 Days
Data Lifetime By Day	
Data Lifetime By Channel	



NOTE: To play back a video exceeding the data lifetime, please extend the duration until the recording data / time of the video is included.

Data Lifetime Mode

This item allows the user to choose preferred data lifetime mode. There are three types of data lifetime mode: General, By Day, and By Channel. When a specific mode is selected, further settings of the other two items below will be grayed out and cannot be accessed.

Data Lifetime

When data lifetime mode is set as <General>, this item will be accessible. Press ENTER to select this item and press UP / DOWN keys to set the data lifetime. The value ranges from <1> to <365> days. Alternatively, select <0> to disable this function.

Data Lifetime By Day

When data lifetime mode is set as <By Day>, this item will be accessible. Enter this menu and users can setup data lifetime of each weekday independently. The value ranges from <1> to <365> days. Alternatively, select <0> to disable this function.

Data Lifetime By Channel

When data lifetime mode is set as <By Channel>, this item will be accessible. Enter this menu and users can setup data lifetime of each channel independently. The value ranges from <1> to <365> days. Alternatively, select <0> to disable this function.

3.6.6 Pre-Alarm Recording

This item is for setting recording duration of pre-alarm video. The pre-alarm recording function aims to allow users to playback a complete event video. Users can playback not only the video recorded after the alarm is triggered, but also the video recorded few seconds before the alarm is triggered.

When an event is triggered while normal recording is in effect, the unit will start copying the pre-alarm and the post-alarm video to the event video. The pre-alarm duration can be set from 0~70 seconds.

The quality of the pre-alarm video is the same as the quality setting for normal record video; and the quality of the post-alarm video is the same as the quality setting for event record video.

3.6.7 Circular Recording

Users can choose to record video in circular mode or in linear mode. If circular mode is selected, the NVR will stores new video into the HDD spaces while overwrite the oldest recorded video. Alternatively, if linear mode is selected, the NVR will stop recording when the HDD is full. In the meantime, the internal buzzer will start beeping and an alert icon will be shown at the status bar to inform users that the disk is full.

From the Record setup menu, move the cursor to <Circular Recording> and press ENTER, then select <ON> / <OFF> using UP / DOWN keys.

3.6.8 Audio Recording

This item allows user to enable / disable Audio recording function of the unit. When it's set to <On>, audio input is recorded and saved with the video. When it's set to <Off>, audio is ignored.

3.6.9 Purge Data

This item is used to delete the Normal or Event recording video. In Record setup menu, move the cursor to <Purge Data> and press ENTER; the Purge Data menu is displayed.

Purge Data	
Purge All Data	No
Purge All Event Data	No
Purge Event Before	2010/12/01
Start To Purge	No

Purge All Data

The item is used to delete all recorded video from the database. Set this item to <Yes using UP / DOWN keys, and start the deletion by setting <Start To Purge> to <Yes>.

Purge All Event Data

The item is used to delete all event video from database(s). Using UP / DOWN keys to select <Yes> and start the deletion by setting <Start To Purge> to <Yes>.

Purge Event Before

The item is used to delete event video before a specific date. Use LEFT / RIGHT keys to move the cursor to next or previous field, ENTER to select the item and UP / DOWN to adjust the value.

Start To Purge

After the video or data to be deleted are selected, set this item to <Yes> to start the deletion or choose <No> to cancel.

4. Basic Operation

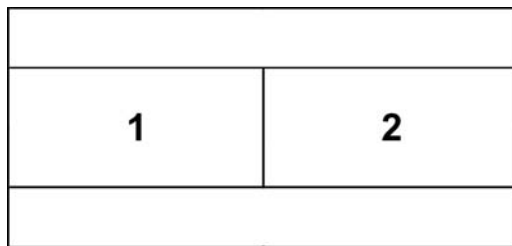
The NVR allows users to access some general operations through the front panel easily. The following sections introduce the general operations.

4.1 View Live / Playback Video

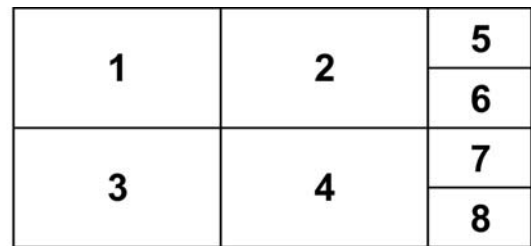
The general functions in Live and Playback mode are described in the following sections.

4.1.1 Viewing Modes

The NVR provides a few different viewing modes. Press any CHANNEL key directly to view the corresponding IP camera in full-screen mode. In addition, press MODE to view in multiple window modes. The following figure shows the available multiple window modes. Press MODE repeatedly to switch to the next available viewing modes.



2-windows



8-windows

4.1.2 Digital Zoom

Users are able to view a 2× full-screen in live and playback mode. To view the 2× full-screen, follow the steps.

- Press any CHANNEL key to view the corresponding camera in full-screen.
- Press ENTER to view 2× zoomed screen of the selected camera.
- To view a specific area in 2× zoomed screen, use Direction keys to pan / tilt the zoomed screen.
- Either press ENTER again or press ESC to leave the Zoom mode.

4.1.3 Freeze Live Monitoring Video

Users can freeze Live monitoring video at any time to check displaying image at the moment. Press FREEZE key while viewing Live monitoring video, the image will be frozen immediately. However, the date / time information will not be paused. The system clock will keep on ticking. Press FREEZE key again to resume Live monitoring video of instant time.

4.1.4 View Recorded Video

To view recorded video, users can press PLAY key directly. After pressing the PLAY key, the NVR starts to resume playback the recorded video from the suspended point of record. If it is the first time to use the PLAY key, the NVR will playback from the very beginning of the record. Alternatively, users can select records from the Search menu to playback specific video. Refer to section **Search Recorded Video** for further information.

The Forward or Reverse playback speed indicator will be shown in the status bar during Playback mode.

The general operations in playback mode are described as follows.

Key Usage in Playback

The key usage is slightly different in Playback mode. Following is the key usage found in playback mode.

- **LEFT** (Reverse Playback)
Press this key to reverse playback the recorded video. Press the key repeatedly to increase the speed of reverse playback by 1×, 2×, 4×, 8×, 16×, or 32×.
- **RIGHT** (Forward Playback)
Press this key to playback the recorded video fast forward. Press the key repeatedly to increase the speed of forward playback by 1×, 2×, 4×, 8×, 16×, or 32×.

- **FREEZE**

Press FREEZE to pause the playback video. When the recorded video is paused, press LEFT / RIGHT to move playback video single step reverse / forward respectively. Press FREEZE again to resume playback video.

- **PLAY**

Press it to start playing back video or stop playing back video and return to live mode.

Pause Playback and Single Step Forward

To pause and resume recorded video, follow these steps.

- Press any CHANNEL key to view the corresponding camera in full-screen.
- Press FREEZE to pause the current playback image.
- Press RIGHT / LEFT Direction keys to move the video single step reverse / forward. Press and hold RIGHT / LEFT keys to repeatedly reverse / forward the video single step.
- Press FREEZE again to resume the playback operation.

4.1.5 Taking Snapshots

When a playback video of a single channel display is paused, users can press ENTER key to capture and export snapshots to an external storage device, excluding optical drives. Note that the system log will keep a record of any snapshot exportation.

4.2 Sequence Setup

This section introduces the way to view sequence mode with the Main Monitor. Sequence function can avoid manual backtracking and provides more flexibility while monitoring surveillance.

Automatic sequence function can be observed in any viewing modes. Select certain viewing mode and press SEQ to toggle the automatic sequence. Press SEQ again to stop.

4.3 Search Recorded Video

The NVR is capable of searching and playing back recorded video by date / time, events, or text. To search by time, select a specific date and time of the wanted video or enter Calendar Search. To search by event, select channels to display the event list. In Live or Playback mode, press SEARCH to enter the Search menu.

Search	
Search By Time-----	
From:	2010/12/07 PM 04:45:36
End:	2010/12/08 AM 08:15:12
Select:	2010/12/08 PM 04:45:36
Begin Playback	
Calendar Search	
Search By Event-----	
Select Channel:	CH1 CH2 CH3 CH4 <input type="checkbox"/> All
Event List	
Search By Text -----	
Text Query Page	



NOTE: "Search By Text" only functions when a POS machine is connected and text data is stored.

4.3.1 Search by Time

Follow the steps to search video by date and time.

- Press SEARCH to enter the Search menu.
- Move the cursor to "From" and press ENTER will start playing recorded video from the specified "From" time.
- Move the cursor to "End" and press ENTER will start playing recorded video from the specified "End" time.
- Move the cursor to "Select" and press LEFT/RIGHT keys to choose date/ time. Press ENTER and adjust the values by UP/DOWN keys.
- Press ENTER to confirm the settings or ESC to abort.
- Move the cursor to <Begin Playback> and press ENTER to start playing back the selected video.
- Press PLAY again to return to live video.



NOTE: If there is no available recorded video that matches the specified time and date, the unit starts to playback from the next available video.



NOTE: The date/time information will be shown on the screen with a DST icon if the Daylight Saving Time function is enabled. “S” indicates summer time and “W” indicates winter time.

4.3.2 Calendar Search

Follow the steps below to search recorded video via Calendar Search.

- Press SEARCH button to enter the Search menu.
- Move the cursor to <Calendar Search> and press ENTER. A calendar will be shown as below.

Calendar Search

Date/Time -----

December▼ 2010							
	Sun	Mon	Tue	Wed	Thu	Fri	Sat
48	28	29	30	1	2	3	4
49	<u>5</u>	<u>6</u>	<u>7</u>	<u>8</u>	<u>9</u>	<u>10</u>	<u>11</u>
50	<u>12</u>	13	14	15	16	17	18
51	19	20	21	22	23	24	25
52	26	27	28	29	30	31	1
1	2	3	4	5	6	7	8

Search By Time -----

From/End From End

Select 2010/12/07 PM 10:34:18

Begin Playback

- Move the cursor to year/ month and press ENTER. Then press UP/DOWN keys to adjust the value and press ENTER again to confirm.
- Move the cursor and press ENTER to select any date shown in bold and underlined font. The bar below the calendar will change according to the recorded data of the selected date.
- Then select preferred time from the time bar. Alternatively, move the cursor to the time shown at the bottom. Press ENTER and adjust the values of hour/ minute/ second via UP/DOWN keys.
- The <From> and <End> buttons allows users to playback video from the beginning or end of the database.
- Note that the time blocks highlighted in red represent events occurred.
- Select <Begin Playback> and press ENTER to start playing back selected video.

4.3.3 Search by Event

“Event List” allows users to search wanted video by event. The Event List is displayed as below:

Event List		
Date Time	Ch	Type
2010/12/07 AM 11:26:50	2	Motion
2010/12/07 AM 11:53:03	5	Alarm
2010/12/17 PM 12:14:42	3	Alarm
2010/12/07 PM 12:45:31	1	Motion
2010/12/07 PM 12:55:56	1	Alarm
First Page		
<input type="button" value="<<<"/> <input type="button" value="<<"/> <input type="button" value="<"/> <input type="button" value=">"/> <input type="button" value=">>"/> <input type="button" value=">>>"/>		

The list displays events by date, time, triggered camera and alarm type. As some events are deleted, others are displayed. The latest recorded event video will be listed on the top.

Follow these steps to search event video through Event List:

- Press SEARCH to enter the Search menu.
- To search event video that has been recorded on a specific camera, use LEFT / RIGHT to move the cursor and press ENTER to select or de-select a channel.
- Move the cursor to <Event List> and press ENTER to list the event video of the selected channels. The Event List displays.
- To exit the event list, press ESC.

Follow the steps to playback video from Event List.

- Press and hold UP / DOWN to select from the Event List.
- Press ENTER to play back the selected event record.
- Press the buttons at below to go to previous/next pages.
- Press PLAY to return to Live mode.

4.3.4 Search by Text

When a POS device is connected to the NVR, users can search for videos with text data. The “Text Query Page” is displayed as below:

Text Query Page		
By Text		Off
Item		
Item		
By Numerals		Off
Value		
Value (Upper Limit)		
By Date/Time		Off
From:	2010/12/07 AM 00:00:00	
To:	2010/12/09 AM 00:00:00	
By Channel		Off
Text Query List		

There are three ways to search: by text, by numerals, or by text and numerals. In the mean time, date/time and/or channel can be specified to narrow down range, thus the search will be faster. Refer to below for search options.

By Text:

- **Exception:** Search for video with data containing the exception string set in the OSD setup menu.
- **OR:** Enter two sets of word strings. Search for videos with data containing EITHER ONE of the word strings.
- **AND:** Enter two sets of word strings. Search for videos with data containing BOTH of the word strings.
- **Specific:** Specify one set of word string. Search for videos with data containing the specific word string.

By Numerals:

- **Outside The Range:** Enter two numbers to specify a range. Search for videos with data containing number(s) out of the range.
- **Inside The Range:** Enter two numbers to specify a range. Search for videos with data containing number(s) within the range.
- **Less Equal Than:** Enter one number. Search for videos with data containing number(s) less than or equal to the specific number.
- **Greater Equal Than:** Enter one number. Search for videos with data containing number(s) greater than or equal to the specific number.
- **Specific:** Specify a number. Search for videos with data containing the specific number.

4.3.5 Panorama Search

In addition to the various search methods listed above, the NVR also provides users a different way to search for video of one specific channel via preview images, called panorama search. Please refer to the following steps to do panorama search.

- First, start to playback video of one specific channel in full-screen.
- Press FREEZE and the video will be paused.
- Press MODE once, panorama search will be started and the preview images will be in 1 second interval, with 20 preview images displayed.
- Press LEFT/RIGHT, the previous/next 20 preview images in 1 second interval will be displayed.
- Press MODE the second time, panorama search preview will be refreshed in 1 minute interval.
- Press MODE the third time, panorama search preview will be refreshed in 1 hour interval.
- Press MODE the fourth time, panorama search preview will be refreshed in 1 day interval.
- Move the mouse cursor to the frame preferred and click on it to start playback the video from the selected frame.
- Press PLAY to return to Live mode.

4.4 Video Export

The following sections will show how to export video through the OSD setup menu and through the hot keys on the front panel, respectively. Note that the system log will keep records of all video exportations, including duration, start time, and end time.

4.4.1 Export from OSD Setup Menu

The Video Export menu enables only the accounts with proper authority to export recorded video with digital signature to a USB ThumbDrive® or a DVD+RW drive. Login with an authorized account to export video.

The exported video will be named by the exporting date and time, and classified by event type. Each recorded video will be exported into four files if digital signature is required, including *.gpg, *.avi (or *.drv), *.sig and readme.txt.

Make sure an external storage device is available and connected to the appropriate port for video export. From the Main menu, select <Video Export> and press ENTER. The menu is displayed as below.

Export			
Select Device			
Select Ch:	Ch1	Ch2	Ch3 Ch4 <input type="checkbox"/> All
From:	2010/12/07 AM 11:50:05		
To:	2010/12/09 PM 03:09:18		
Select Events			
Data Type			Normal
Export Format			DRV
Digital Signature			No
Erase Disc			No
Begin Export			No

4.4.1.1 Select the External Device

The available external devices for exporting video will be listed by name and free size in Select Device menu. The Select Device menu displays as follows.

Select Device		
Device Name	Available	Sel
xxx-xxx-x-x-xx	256 MB	No
xx-xxx-xx-xxxx	1.5 GB	No

The NVR only supports EXT3 file system. If an external HDD will be connected to the unit, ensure the format of the HDD is EXT3.

Device Name

The item shows the name of the available device.

Available

The item shows the free space of the available device.

Select

Set the item to <Yes> to set it as an exporting destination, or <No> to cancel.

4.4.1.2 Select Video for Exporting

Select video from desired channel(s) with specific date / time and/or event(s), and set the item <Begin Export> to <Yes> to start exporting. Following are the items for selecting video.

Select Channel

Select the channel to export. Move the cursor to the desired channel using LEFT / RIGHT keys, select or de-select a channel by pressing ENTER.

From / To Time

The items are used to set the time which data export begins and ends. Move the cursor using LEFT / RIGHT keys, and press ENTER to select the date / time items; adjust the selected date and time value by UP / DOWN keys.

Select Events

Select this item to display the event list. Move the cursor to scroll through the event list and press ENTER to select event(s) to be exported.

Data Type

The item is used to select exporting video type. The options are <Normal> (export normal video only), <Event> (export event video only) and <Both> (export both normal and event video).

Export Format

This item is for selecting exporting video format. The options are <DRV>, <AVI>, and <Original>. The DRV and AVI files are compressed video files while the original files are raw data of the unit's recorded video.

The DRV and original files can only be played back with the remote monitoring software and playback software, and multiple cameras video can be played back from one file. The AVI files can be played back with Windows Media Player. Note that if multiple channels are exported for AVI files, each channel is exported to a separate file.

4.4.1.3 Digital Signature

Users can export video clip with or without a digital signature. Set this item to <Yes> to export with the signature file, or <No> to export without it.

Each recorded video with digital signature will be exported into four files, including *.gpg, *.avi (or *.drv), *.sig and readme.txt. The *.gpg file name is as the last eight MAC (Media Access Control) address of the unit.

Make sure that an external storage device, such as a USB Hard Drive or USB ThumbDrive[®], is available and connected to the appropriate port for export.

For more information on verifying digital signature, see appendix **Verify Digital Signature** in the OSD Setup Manual.

4.4.1.4 Erase Disc

This function is used to remove data found on a DVD+RW disk prior to exporting new information to the drive. Select <Yes> and press ENTER to start deleting data.

4.4.2 Quick Video Export through Front Panel

Through front panel control, the NVR allows users to easily export wanted video as *.drv file with the built-in DVD+RW or to an external device, such as a USB ThumbDrive[®]. To export video to an external device, make sure the device is connected to the NVR.



NOTE: Once an external device has been connected to the NVR, the device has priority over the built-in DVD+RW. That means the video will be exported to the external device instead of the built-in DVD+RW.

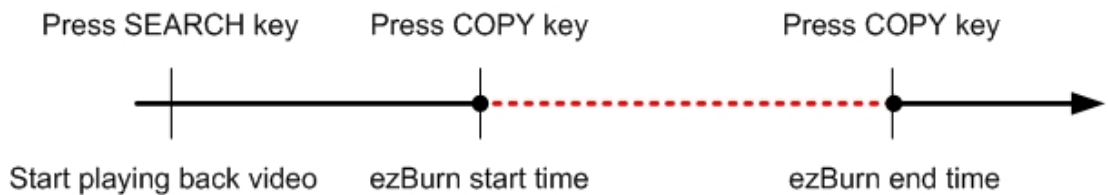
Depending on the size of video, the exporting process may take about 10 minutes to 1 hour.

4.4.2.1 ezBurn Introduction

Built with the ezBurn technology, ezBurn function provides users the easier way to export desired video with built-in DVD+RW or to an external device, such as an USB ThumbDrive®.

TWO keys (SEARCH and COPY) and THREE touches are all what's needed for completing the export. The entire exporting process will be done through the front panel, without needing to enter the OSD setup menu.

The ezBurn exporting process is illustrated as below figure:



The entire process is described step by step in the following sections.



NOTE: The file exported using ezBurn will be in .drv file format, which can only be played using the remote player software.

4.4.2.2 Export Normal Video

To Export normal video to external device, follow these step:

- Press SEARCH and playback wanted normal video by entering date/time. Note if the screen is showing in multiple channel mode, please make sure there is no window displaying in Live mode, or the export will not work.
- After entering Playback mode, playback the video and press COPY once to mark the starting point of the export video. The playback continues.
- Press COPY again to mark the ending point of the export video. Then the “ezBurn” window will display as below figure. The information shown on the window is “read only”.

ezBurn confirmation

Selected Device: Built-in DVD+RW

All data on the disc will be erased.

Exported Required Size = 11 MB

Real Export Range:

From: 2010/12/07 AM 10:41:13

To: 2010/12/07 AM 10:41:21

Enter: Yes ESC: No

- Press ENTER to start the export; or, press ESC to abort.
- If there is no exportable device connected to the NVR, then a warning message will be shown on the screen, as below figure:

```

No exportable device detected.
Please install the target device/media to the NVR.
Enter: Retry   ESC: Exit
  Retry   Esc

```

4.4.2.3 Export Event Video

To export event video, follow these steps:

- Press SEARCH and playback wanted event video. To playback event video, refer to OSD Setup Manual Section **Search Recorded Video**.
- After entering Playback mode, press COPY. The “ezBurn” window will display as below figure. The information shown on it is read only.

```

ezBurn confirmation
Selected Device: Built-in DVD+RW
All data on the disc will be erased.
Exported Required Size = 11 MB
Export Event Info:
  Data      Time      Ch      Type
2010/12/07 AM 10:42:35 13      Motion
Enter: Yes  ESC: No

```

- Press ENTER to start the export the whole event video to the connected device; or, press ESC to abort.
- If there is no exportable device connected to the NVR, then a warning message will be shown on the screen.

4.5 Dome Control

The NVR allows users to control a dome camera via the function keys on the front panel. In Live mode, users can press any CHANNEL key to display the desired dome camera in full-screen. To enter Dome Control mode, press the DOME key and a dome control panel will be displayed. To exit the Dome Control mode and return to Live mode, press ESC or DOME.

4.5.1 RS485 Setup

The NVR can also control the dome cameras via RS-485 communication protocol. The RS-485 parameters of the NVR must be set to the same as the parameters set in dome camera.

Users are allowed to change the RS-485 settings of the NVR. Select <System> in Main menu, then select <RS485 Setup> from the System setup menu and press ENTER. The following menu is displayed.

RS485 Setup	
Unit ID	224
Baud Rate	9600
Bits	8
Stop	1
Parity	None



NOTE: The settings become effective after saving the changes and exiting from the menu.

4.5.2 Dome Controlling Key

After pressing DOME to enter Dome Control mode, a dome control panel will be displayed. The controlling buttons are: Iris Close/Open, Focus Far/Near, Zoom Out/In, Preset, Live, Pan/Tilt Speed, Direction buttons, and Auto Focus. The functions are described as below.

Iris Close

Click on it to close the Iris on the dome camera.

Iris Open

Click on it to open the Iris on the dome camera.

Focus Far

Click on it to focus the lens of selected dome camera at a farther point.

Focus Near

Click on it to focus the lens of selected dome camera at a nearer point.

Zoom Out

Click on it to zoom out the lens of selected dome camera. This function enables users to shrink the current image and a larger viewing area can be displayed.

Zoom In

Click on it to zoom in the lens of selected dome camera. This function enables users to enlarge a certain area.

Preset

This key is used to enter the Dome Preset menu to set up certain position as a preset and go to the predetermined preset positions for viewing.

Live

Click on it to exit Dome Control mode and return to live full-screen viewing mode.

Pan/Tilt Speed

Users can select preferred pan/tilt speed.

Direction Buttons

Click on the buttons to pan and tilt the lens of selected dome camera.

Auto Focus

Click on this button to automatically adjust focus of the dome camera.

The front panel keys can also perform the functions listed above. Please refer to **Setup Guide** for the graphical illustration of functional keys.

4.5.5 Set Preset Points

The NVR allows users to set preset positions. The amount of preset points depends on the dome manufacturer.

Follow the steps to set preset points.

- Press a Channel key to view the corresponding camera in full-screen.
- Then press DOME to enter Dome Control mode. The dome control panel will be displayed.
- Use Direction keys to pan/tilt the dome camera to desired position.
- Click <Preset> on the dome control panel or press CH1 key to access the Set/Go Preset function. A numeral keyboard will be displayed as below.

1	2	3	BS
4	5	6	Set Preset
7	8	9	Go Preset
Exit	0	Clear	Run Tour

- Input a desired preset number.
- Click on the <Set Preset> button to save the position. Now the preset position is set and ready to be called.

4.5.6 Call Preset Points

Follow the steps to call preset points.

- Press a Channel key to view the corresponding camera in full-screen.
- Then press DOME to enter Dome Control mode. The dome control panel will be displayed.
- Click <Preset> on the dome control panel or press CH1 key to access the Set/Go Preset function. A numeral keyboard will be displayed.
- Input a desired preset number.
- Click on the <Go Preset> button to call the preset point. Then the selected dome camera will rotate to the preset position automatically.

4.5.7 Run Dome Camera Tour

Users can also display dome camera tour setup at the dome camera side.

Follow the steps to run display of dome camera tour.

- Press a Channel key to view the corresponding camera in full-screen.
- Then press DOME to enter Dome Control mode. The dome control panel will be displayed.
- Click <Preset> on the dome control panel or press CH1 key to access the Set/Go Preset function. A numeral keyboard will be displayed.
- Click on the <Run Tour> button to run display of dome camera tour.
- Press any Direction keys to end the display of dome camera tour.

4.6 UPnP Function

UPnP is the abbreviation for Universal Plug and Play, which is a technology that integrates a universal protocol for widespread plug-and-play devices to ease the network implementation. When a PC and a NVR both installed the UPnP function, the PC can automatically recognize the NVR in the same local area network.

The advantage of this function is that PCs can connect to the NVR via the remote control software by directly clicking on the icon representing the NVR in **<My Network Places>** folder.

4.6.1 Setting Up the NVR and the PC

Enable the UPnP function in the NVR:

Enter the OSD setup menu with proper account and access **<System>** → **<Network Setup>** → **<UPnP Setup>**. The menu is as the following:

UPnP Setup	
UPnP	On
UPnP NAT Traversal	No

Set the first item UPnP to **<On>** and the NVR is ready.

Install the UPnP interface components in a PC:

- Click **<Start>** → **<Control Panel>** → **<Add or Remove Programs>**.
- Then click **<Add/Remove Windows Components>** on the left.
- In Windows Components Wizard, double click on **<Networking Services>**, then check the box in front of **<Universal Plug and Play>**.
- Click **<OK>**, then **<Next>** and the installation process will begin.
- When the installation is completed, the icon representing the NVR can be found in **<My Network Places>** folder.
- Double click on the icon will open an internet browser that connects to the NVR via the remote control software.

4.6.2 UPnP NAT Traversal Function

The UPnP NAT traversal function will help to automatically setup a router if the NVR connects to the internet via a router.

When a PC connects to a NVR not in the same local area network, a real IP address and corresponding port number is required. However if the NVR is behind a router, the communication between the PC and the NVR will be transmitted back and forth by the router. The router will need to setup port mapping (forwarding) before images from the NVR can be remotely viewed on the PC. For each individual NVR, the setting needs to be done individually. Imagine if there is tens or hundreds of NVRs. The setting will take a long time.

Fortunately, if the NVR has UPnP NAT traversal function, the setting of the router will be done automatically when it is enabled. Just select <Yes> for the menu item UPnP NAT Traversal in the UPnP setup menu and it will take care of everything.

4.7 System Log Exportation

In the Configuration setup menu, select <System Log> and a list of system logs will be displayed on the screen. Users can export the system log as a data file to an external storage device. Connect a USB storage device and click on <Export> (or press COPY key) to export the system log file to the USB storage device. Note that in the mean time, a digital signature file will also be exported.

Also under the Configuration setup menu, set <Operation Log> to <On> and operation logs will begin to be recorded in the system log. Alternatively, set to <Off> and operation logs will not be part of the system log.

5. Remote Monitoring Software

The remote monitoring software is a remote browser-based software application designed to operate with the NVR products. Using the software, users are allowed to view live and recorded video, and to configure the NVRs remotely via a LAN, WAN or Internet on a personal computer.

The connected PC will automatically download the remote monitoring software plug-ins from the NVR when the NVR is connected by entering its IP address in the address bar on the browser.

The tasks that can be performed with the remote monitoring software are listed below:

- Remote viewing of live/ recorded video
- Remote setup of the NVR
- Remote control of dome cameras
- Alarm notification from the NVR
- Up to five connections to one NVR simultaneously, including the preset “admin” and four other accounts



NOTE: The Menu function allows users to remotely access the NVR's OSD setup menu, with some limitations. Refer to the above sections or the OSD Setup Manual for setting configuration of the NVR.

5.1 Remote Monitoring System Requirements

Items	Requirements
Personal Computer	Minimum: Intel® Core™ Duo 2.4GHz RAM 1GB
	Recommended: Intel® Core™ i7-2600 3.4GHZ RAM 4 GB
Hard Disk Drive	Requires 20 MB for software installation
Operating System	Windows XP, Windows 7
Web Browser	Microsoft Internet Explorer version 8.0 or above
Monitor Resolution	Minimum 1024×768 with 16-bit color
Network Card	Minimum: 10/100 Mbps
	Recommended: 10/100/1000 Mbps

5.2 Software Installation

Refer to the following description to install the remote monitoring software.

5.2.1 Change Internet Settings

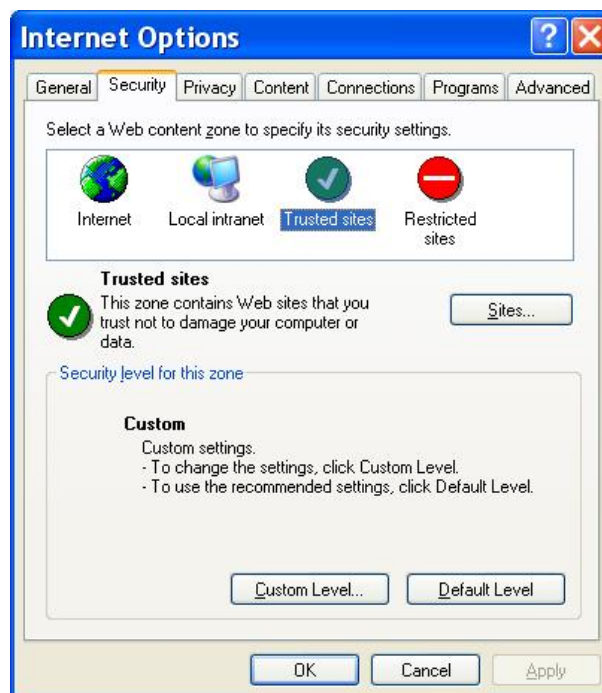
The PC operating with the remote monitoring software should be set to accept ActiveX plug-ins. Please follow the steps to set the Internet security settings appropriately.

- Before operating the remote monitoring software, please check the IP address of the NVR. To check the IP address, press MENU key on the unit and enter username and password to access OSD setup menu. Select <System>, <Network Setup>, then <LAN Setup> to check the IP.
- Start the IE; it can be started either by clicking on the desktop icon, or by using the Start menu to access it.

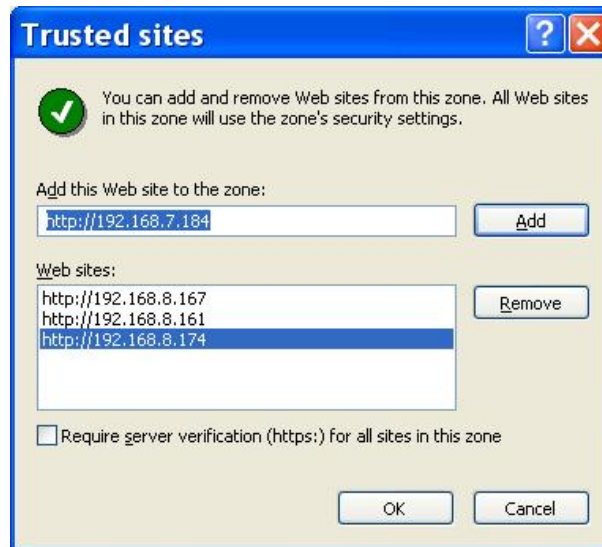


NOTE: Windows IE provides the ActiveX component that is required when using the remote monitoring software.

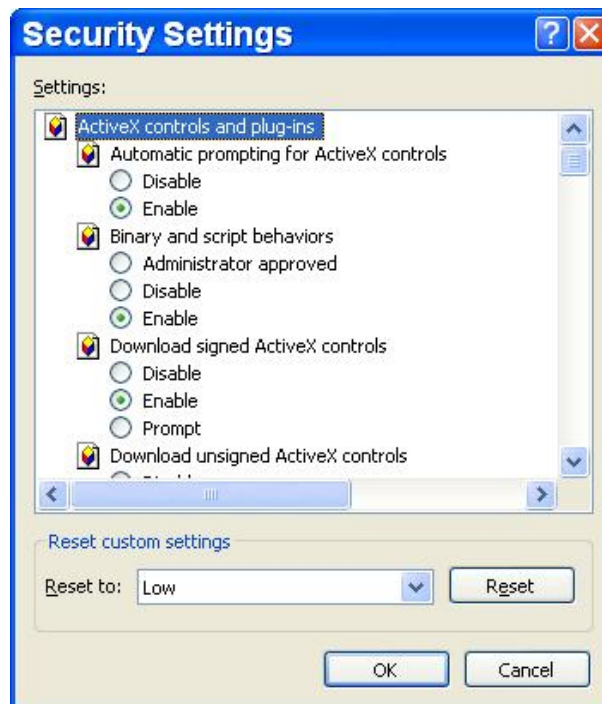
- Select <Tools> from the main menu of the browser, then <Internet Options>, and then click the <Security> tab.
- Select <Trusted sites> and click <Sites> to specify its security setting.



- Uncheck “Require server verification (https:) for all sites in this zone”. Type the IP address of the unit in field and click <Add> to add this web site to the zone.



- Click <OK> to confirm the setting and close Trusted sites dialog.
- In the Security Level area, click <Custom Level>. The Security Settings screen is displayed.



- Under <ActiveX controls and plug-ins>, set all items to <Enable> or <Prompt>.
- Click <OK> to apply the setting and close the <Security Settings> screen.
- Click <OK> to close Internet Options dialog.

Now the installation can continue to the next step.

5.2.2 Install Remote Monitoring Software

Start the browser to initiate the installation of the remote monitoring software on the PC. The IP address of the NVR can be saved as a Favorites item in the web browser to enable easy access in the future.

- Start the IE; it can be started either by clicking on the desktop icon, or by using the Start menu to access it.
- Enter the IP address of the NVR in the address bar at the top of the browser.
- The ActiveX controls and plug-ins dialog will show twice for confirmation; click <Yes> to accept ActiveX plug-ins. The remote monitoring software plug-ins will be downloaded and installed on the PC automatically when the connection is successfully made.



NOTE: Do not enter any leading “0” characters in the address, for example, “192.068.080.006” should be entered as “192.68.80.6”. If the default trigger port 80 is changed into another one, take port 81 for example, the IP address should be entered as “192.68.80.6:81”.



- A version check starts to verify whether the remote monitoring software was installed already, and also check if the version is the same as that stored in that particular NVR. This process may take up to 30 seconds.
- When the software is completely downloaded and installed, the Login Screen is now displayed.



5.2.2.1 Log in / Log off

Login using the same accounts setup in the NVR. The authority level is also the same as setup in the NVR.

One preset account “admin” and up to four other accounts can access a NVR at the same time. Nevertheless, if the “admin” account is currently accessing the NVR’s OSD setup menu via front panel of the NVR, then the “admin” account at the remote monitoring site cannot change the settings at the same time. The “admin” account at the NVR side has priority.



The following steps demonstrate procedures to connect and login to the NVR.

- Start the remote monitoring software by entering the IP Address of the NVR in the Address bar of the browser. Alternatively, click on the Favorite entry for the unit (if the IP address of the unit has been set).
- Enter the Username and password. The login username and password can be saved to ease future login. The default username and password is **admin / 1234**.
- Click <OK> to log in to the NVR. The process may take a few seconds.
- If the connection is made successfully, the main window will display live video of the attached cameras.

If the IE browser is closed, the remote system is logout and disconnected from the NVR at the same time.

5.2.2.2 Software Upgrades

If a new version of the remote monitoring software is available on the NVR, upgrade will be prompted while accessing the unit. Follow the steps to upgrade the software.



- The message as the above figure will be prompted. Click <Yes> to accept version upgrade.
- Start the IE again and enter the IP address of the NVR in the Address bar of the browser; or if the unit address is set as a Favorite site, click the Favorites entry for the unit.
- When the software is completely downloaded and installed, the Login Screen will be displayed.

5.3 Basic Operation for Monitoring Remotely

When a NVR is successfully connected, the main window of the remote monitoring software will be displayed. Please refer to the **Setup Guide** for the graphical illustration of functional items.

The functions on the remote monitoring software will be described in the following sections.

5.3.1 View Live Video

View live video from the cameras attached to the NVR by clicking <Live> button on the main window toolbar. Choose a desired display mode – full-screen, 4-windows, 9-windows, 16-windows, and 20-windows – after the live images of the NVR are displayed on the main window. When a dome camera is connected and viewed in single channel full-screen mode, the dome camera control operation can be accessed. To choose desired display mode and to operate dome camera control, refer to the following sections.

5.3.1.1 **Select Display Mode**

Choose the number of windows to be displayed on the main window. Click one of the display buttons in MODE section. Available selections are 4, 9, 16, and 20 camera displays. To view certain window in full-screen, either double-click on the preferred grid, or click on the corresponding CAMERA button.

5.3.1.2 **Operate Cameras with Dome Control**

The remote monitoring software allows users to control and configure a dome camera remotely.

Click on any CAMERA button displayed with a dome icon to view the camera in full-screen. The Dome Control Panel will be displayed on the main window. The items on the Dome Control Panel are described as follows.

Auto Focus (A.F.)

Click on it and the focus of the camera will be automatically adjusted to show a clearer image.

Set/Go Preset & Run Tour (•←)

The remote monitoring software allows its users to store up to 255 preset points according to the allowance of the supported dome cameras.

Use Direction buttons to pan/tilt dome camera to an appropriate position. Then click this button, select <Set Preset> and choose a preferred number from the pull-down list. The preset point is named as the selected number.

Click this button, select <Go Preset> and choose a preferred number from the pull-down list to call the preset point for viewing.

Click this button, select <Run Tour> and the dome camera will start the tour set previously at the dome camera side.

Dome ID (ID)

Click for changing the dome ID and protocol. Proper authority is required to access this function.

Focus +/-

Use to adjust the camera lens to focus on objects for a clear view. Click on <Focus +> to focus near or <Focus -> to focus far.

Iris +/-

This item is used to open and close the iris to let more or less light into the camera. Click on <Iris +> to open iris or <Iris -> to close iris.

Zoom +/-

Users are allowed to zoom-in or zoom-out using the adjusting buttons. Zoom-in to enlarge a certain area and zoom-out to view more area.

Direction Button

This button is used to pan and/or tilt the dome camera. Click the arrows in the directions to be viewed.

5.3.1.3 Digital Zoom of Camera Display

Users can view the camera zoom-in images via the digital zoom function. Right click on any preferred camera grid, in any kind of display mode, and select the digital zoom item to switch on the function. Users then can easily control zoom in/out via mouse scroll wheel.

Move the scroll wheel away from users to zoom in and move toward the users to zoom out. On the upper left-hand corner will show zoom-in magnification. The maximum magnification is X7. Also on the lower right-hand corner will display the position of current viewing area (shown as an inner white rectangle) comparing with the original screen (shown as an outer rectangle frame).

In addition, the viewing area can be dragged and moved by left clicking and holding the mouse while moving.



NOTE: This function will use up a lot of CPU resources. It is recommended not to open too many programs at the same time to avoid crash of CPU.

5.3.1.4 Manually Trigger Relay Output Devices

The remote monitoring software allows users to manually trigger relay output devices while monitoring at the remote site. Right click on any camera grid and select relay out A, B, or C to manually trigger any of them. This is especially convenient when users wishes to trigger any relay output devices while monitoring at the remote site.

5.3.2 Instant Recording

Instant Recording function allows users to record video to the PC by one click.



NOTE: The Audio function is set to OFF as the default setting.

5.3.2.1 Record Video Instantly

Follow the steps to start recording instantly:

- Click on the <Instant Recording> button.
- Select the destination folder to save the video.
- Click on the button again to stop recording.



NOTE: The instant recording video will be saved as *.drv file.

5.3.2.2 Playback Instant Recorded Video

Follow the steps to playback a video recorded by “Instant Recording”.

- Click <Play> on main window toolbar and click <Local Playback> tab.
- Click <Open> to choose a recorded file.
- Click <OK> to start playing the recorded video.

5.3.3 Playback Video

The remote monitoring software allows users to either view recorded video from the NVR, or from the hard disk drive of the PC.

To access the Playback screen, click <Play> button on the main window toolbar. There are three tabs in the Playback screen: <Remote Playback>, <Local Playback>, and <Verify> tabs. <Remote Playback> allows users to playback from the NVR. <Local Playback> enables users to playback a recorded video file stored in the hard disk drive of the PC. <Verify> is provided for users to authenticate if the exported video is altered.

The NVR continues recording while playing back recorded video on the PC, either remote playback or local playback.

5.3.3.1 Playback Remote Video

To view remote video, click <Play> on the main window toolbar, and then <Remote Playback> tab. The <Remote Playback> screen will be displayed.

The <From> and <To> in the <Available Record Video> display the date and time from which recorded video is available for playback.

To playback remote video segments, follow these steps:

- Choose <Playback> in <Select> field for playback recorded video.
- In <Start> field, users can change the date and time either by typing desired numbers directly or by using the arrow buttons.

To type directly:

Click on day, month and year of date field respectively, and type the desired numbers directly. Follow above steps to adjust the hour, minute and second of time field.

To use the arrow buttons:

Click on the arrow button next to the date field to display the calendar; then click the left and right arrow at the top of the calendar to change the date. Use up and down arrow next to the time field to change to the wanted time.

- The other way to select date and time is by moving the blue sliding bar.
- Click <OK> to start the playback, or click <Close> to abort.
- The other option <Download (.DRV)> in <Select> field enables users to download the video segment of selected date and time to the PC. The selection of time duration is the same as described above. Files downloaded will be in *.drv format.

5.3.3.2 Playback Local *.drv Files




The <Local Playback> tab allows users to playback *.drv video files stored in the PC's hard drive.

Follow below steps to playback a downloaded *.drv file with the remote monitoring software.

- Click <Open> and the file selection screen is displayed.
- Select the *.drv video file for playback and click <OK>.
- Click <OK> in the <Local Playback> Screen to start the playback, or click <Cancel> to abort.
- View the video playback using the Playback controls.
- To end the playback, click <Live> to return to live video.

5.3.3.3 Playback Controls

When the local or remote video is being played, the remote monitoring software is in Playback Mode. The playback controls toolbar will emerge on the main window toolbar. The Playback controls and indicators are described as below.

Icon	Name	Description
	Fast Backward / Step Backward	<ol style="list-style-type: none"> 1. Click to play the recorded video in backward direction. Click repeatedly to select the backward playback speed: 1x, 2x, 4x, 8x, 16x, or 32x. 2. When playback is paused, click repeatedly to move backward step-by-step.
	Play / Pause	<ol style="list-style-type: none"> 1. While playing, click to pause the playback. 2. When paused, click to resume the playback.
	Fast Forward / Step Forward	<ol style="list-style-type: none"> 1. Click to play the recorded video in forward direction. Click repeatedly to select the forward playback speed: 1x, 2x, 4x, 8x, 16x, or 32x. 2. When playback is paused, click repeatedly to move forward step-by-step.

5.3.4 Verify Digital Signature

The digital signature aims to authenticate a video file exported from the NVR. Follow the description to verify the digital signature.

- Click <Play> on the main window toolbar.
- Click <Verify> tab to display the Verify window.
- Click <Browse> to select the *.gpg, *.avi, *.sig files respectively, which belong to the exported video to be authenticated.
- Click <Verify> to start verifying digital signature.
- The result of verify will be shown in the <Status Log> field. It returns a GOOD or BAD signature result. A GOOD signature indicates the exported clip has not been altered.

5.3.5 Search from Event List

Click SEARCH, the Event List appears. The List contains information about the alarm events that the unit recorded and saved. Up to 1024 events can be listed in the Event List.

The Event List displays each event by its number, the date and time of the event, the type of the event (including Alarm In, Motion Detection, and Video Loss), and the camera channel where the event occurred.

To view an event video, follow these steps:

- Click SEARCH button positioned in the main window toolbar. The Event List appears.
- Scroll through the Event List and highlight the interested events.
- Double-click on the desired event to view the event video.

5.3.6 Take a Snapshot

Snapshot is a simple screen capture tool. When users click on the SNAPSHOT button, it will capture the screenshot of the window that is currently showing on the screen. Each click captures one screenshot to be saved as a JPEG file on the desktop. The snapshot file will be named as "Snapshot-*".

5.3.7 Health Status of HDD

This function verifies HDD status of the NVR. The information items shown in the chart are described as below:

Device Name

This item shows the model name of the HDD.

Int./Ext.

This item indicates whether the HDD is an internal or external device.

Total Size

This item indicates the total size of the HDD.

State

This item indicates whether the HDD is active or non-active.

Temperature

This item indicates the current temperature of the HDD in Celsius degree.

5.3.8 Normal and Dual Streaming

For different networks with different bandwidths, two streaming options are provided – normal and dual streaming. The preset is normal streaming.

Users who are using high-speed networks, normal streaming will be a recommended choice. Depending on the HDD capacity and network usage, set the remote monitoring software to occupy high or low bandwidths.

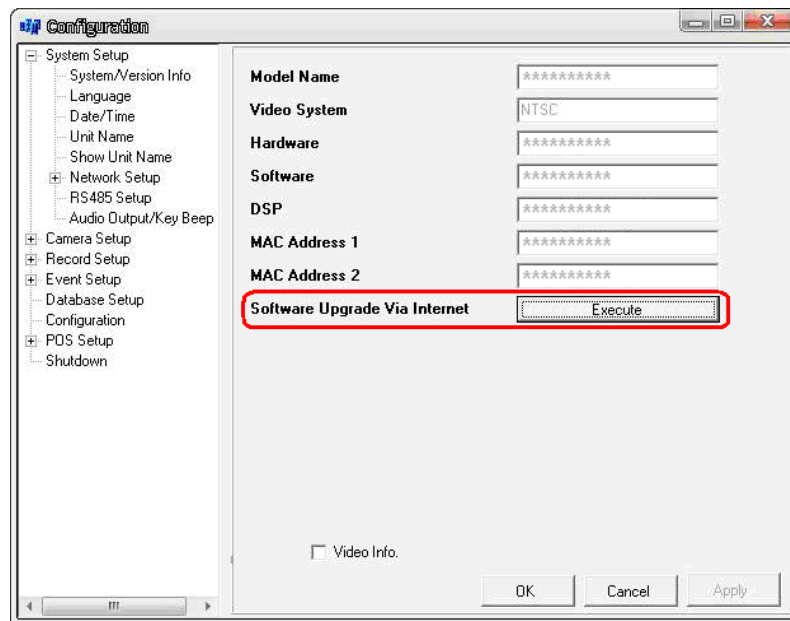
For networks with limited bandwidth, dual streaming will be a better choice. It enables coexistence of high quality streaming at local NVR site and lower quality streaming but faster transmission for the remote monitoring site. To select dual streaming, click on the bandwidth icon and the icon will change color. Then users can furthermore choose different bit rates to adjust for the best displaying quality.

5.3.9 Remote Software Upgrade/ Reboot of Connected NVR

Users can remotely perform software upgrade or reboot the connected NVR.

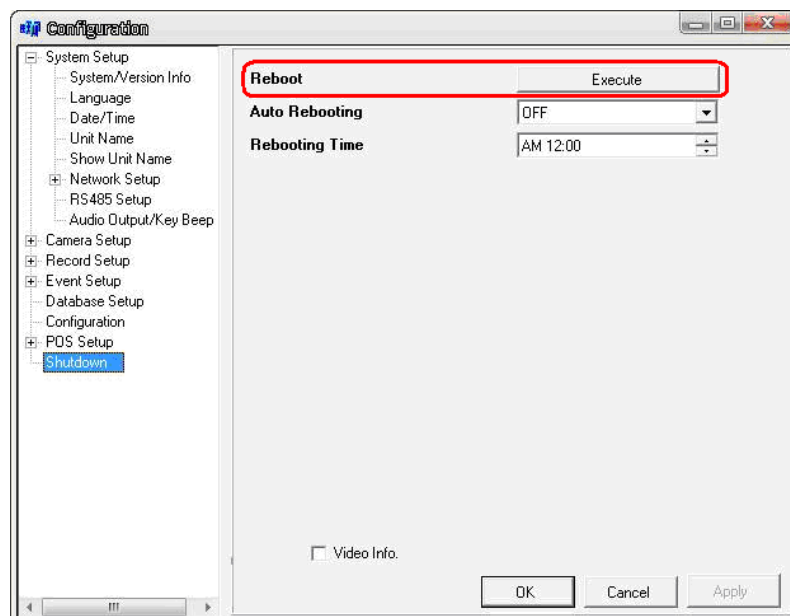
Remote Software Upgrade

Click MENU button in the main window toolbar. A Configuration window will be displayed. Go to <System Setup> → <System/Version Info> and the menu is as shown below. Then click on the Execute button and locate the upgrade file “*.tar” or files “*.tgz & *.md5” to start remote software upgrade.



Remotely Reboot

Also from the Configuration window, access the Shutdown menu as shown below. Then click on the Execute button to remotely reboot the NVR.



5.3.10 Remote Monitoring Software Troubleshooting

What happened if the server requests to upgrade the software every time the NVR is connected? If the following screen displays repeatedly, please follow the steps to delete the temporary internet files.



- Select <Tools> from the main menu of the web browser, then <Internet Options>, and then click the <General> tab.



- Click the <Delete Files> button in the <Temporary Internet Files> field; the <Delete Files> screen displays as below.



- Check the <Delete all offline content> box and click <OK>.
- Now, enter the IP address of the NVR to make the connection again.

Appendix A: Recommended HDDs

The following is a list of recommended SATA HDDs.

Brand	Model Name	Model Number	Size
WD	Caviar Blue	WD10EALX	1.0TB

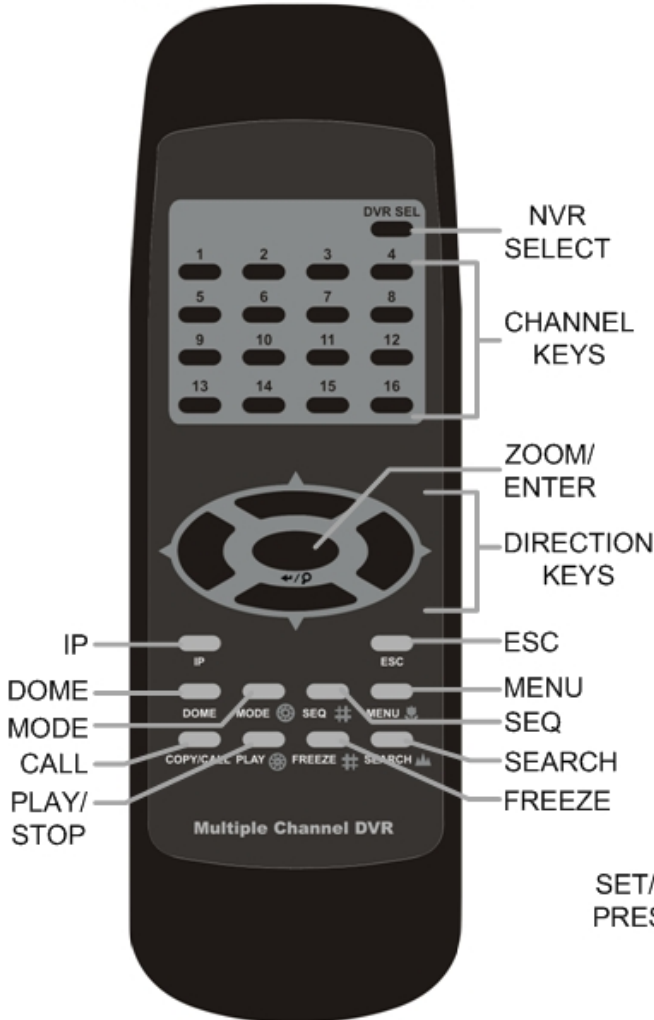


NOTE: After a HDD is successfully installed, users will see a number shown in front of the device name when retrieving internal disks information in the OSD setup menu via <Database> → <Internal Disks>. The number represents the SATA port that the HDD is connected to.

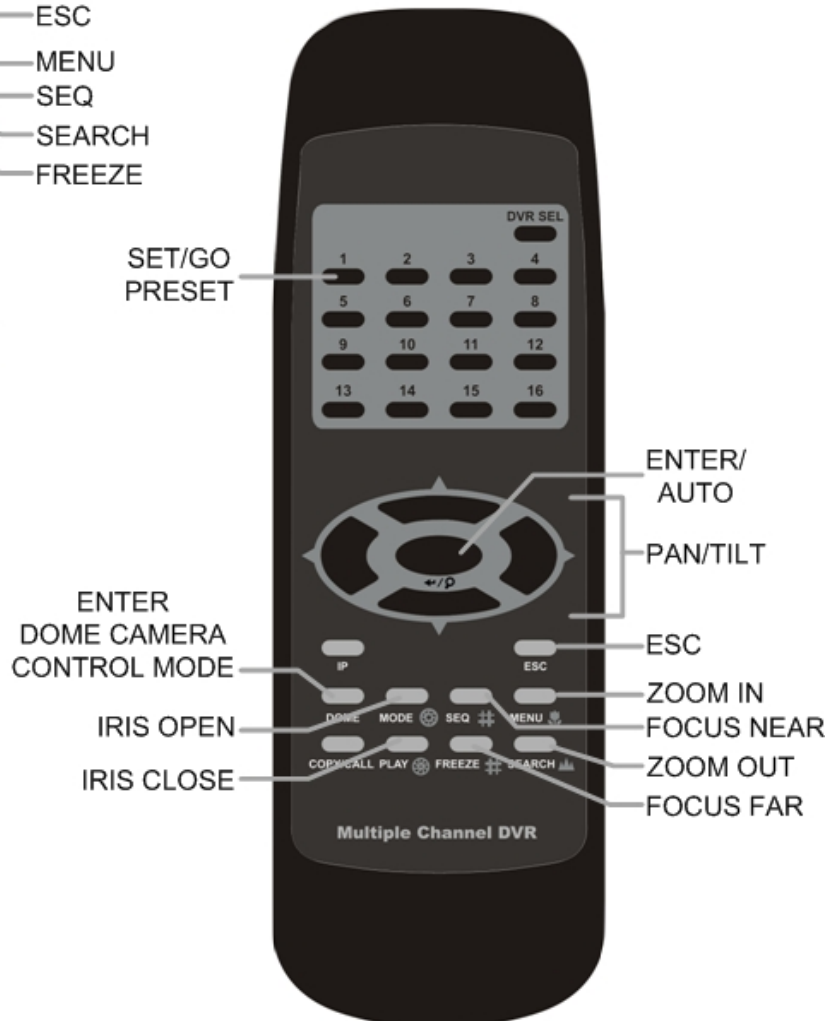
Appendix B: Remote Controller

A remote control is provided for the NVR. The operational function keys (on the left) and dome camera control keys (on the right) on the remote control are listed as below figure:

NVR Control Mode



Dome Camera Control Mode



The keys of the remote control function as the keys of the front panel of the NVR. The only difference between the remote control and the front panel is the “NVR SEL” key. The NVR Selection key is used to switch control between different NVRs.

The remote control can be used to control up to 16 NVRs. To setup the remote control, the first thing is to assign a unique NVR Unit ID to different NVRs.

Use the front panel of the NVR, and follow this path to change the NVR Unit ID: <Main Menu> → <System> → <RS485 Setup> → <Unit ID>. Change the NVR Unit ID to any number between 224 and 239, and exit the menu.

The ID Table is listed below for reference.

NVR Unit ID	224	225	226	227	228	229	230	231
Remote Control #	1	2	3	4	5	6	7	8

NVR Unit ID	232	233	234	235	236	237	238	239
Remote Control #	9	10	11	12	13	14	15	16

After the NVR Unit ID is changed, setup the “NVR SEL” of the remote control. Press “NVR SEL”, and then press the Remote Control # immediately to select the NVR. For example, assuming that the NVR Unit ID is set to 225, press “NVR SEL” and press “2” immediately. Now, the remote control will only be able to control the specified NVR. Press “NVR SEL”, and then press the Remote control # to switch between NVRs.

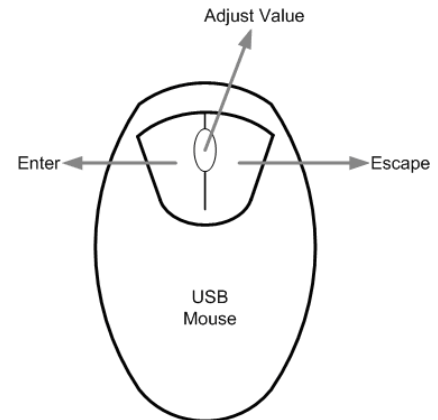
To exit the single NVR control mode, press “NVR SEL”, and then press “ESC” to do so.

Appendix C: USB Mouse Operation

Users can use an USB mouse to operate the NVR. To use the USB mouse, please read through the following descriptions.

Plug in an USB mouse to any USB port of the NVR. Move the USB mouse, and the cursor should appear. Move the cursor to the right side of the screen and a Live Panel will be displayed. The icons on the Live Panel are the same as the functional keys on the front panel of the NVR.

Clicking the left button functions the same as pressing the "ENTER" key. Clicking the right button functions the same as pressing the "ESC" key. The scroll wheel is used to change values.



For example, if users want to change dome camera ID, enter the OSD setup menu with an authorized account and go to the following path: <Camera> → <Connection Setup> → <IP Dome ID>.

Left click on <IP Dome ID> and scroll the wheel up or down, the ID number will change as the scroll wheel moves. Stop moving the scroll wheel when the preferred ID number appears, then left click on the <IP Dome ID> and the ID number will be changed.



NOTE: Users can access the OSD menu with an authorized account and go to <Monitor> → <Mouse Sensitivity> to setup preferred sensitivity level of USB mouse.

Special Operation

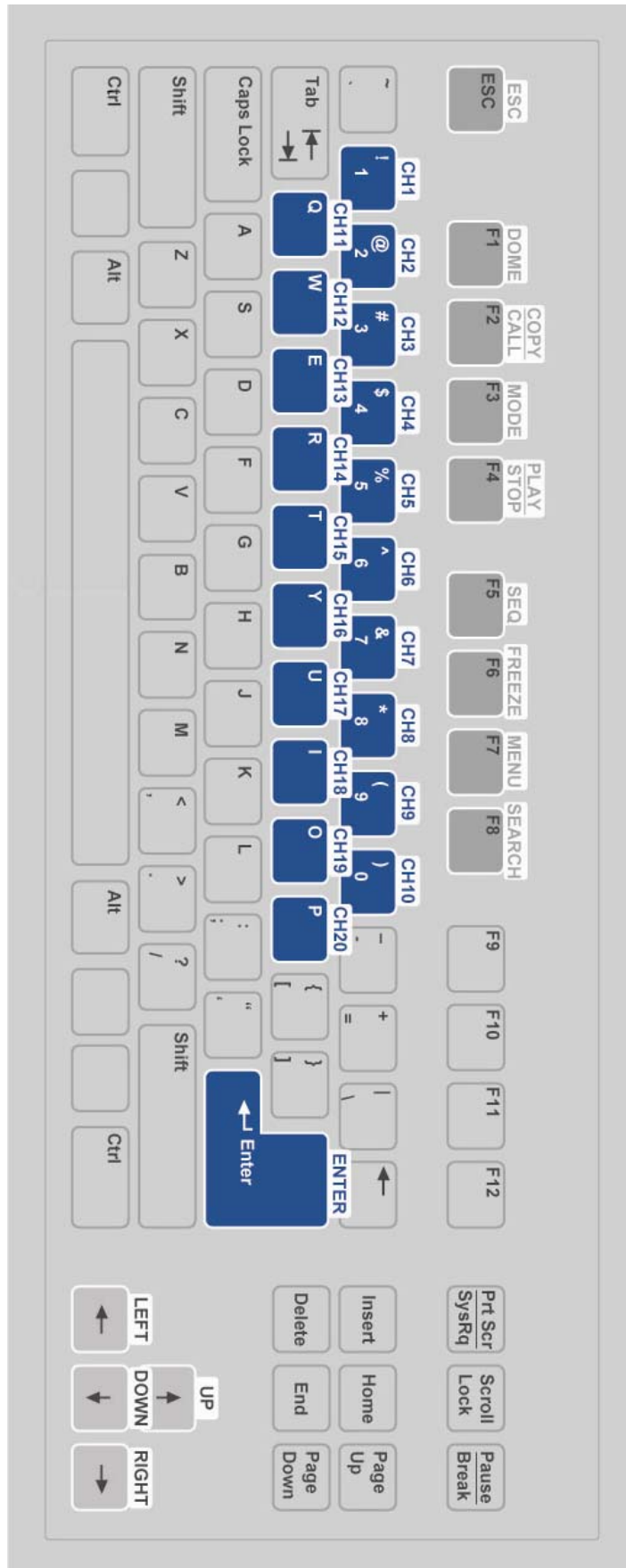
There is a special operation provided when an USB mouse is connected.

Camera Title Alignment

Users are allowed to change the display position of camera titles of all channels. To change the camera title position of any single channel, left click on the camera title and drag to any preferred position. If users want to set all of the camera titles to the same position that is set for a specific channel, right click on the specific camera title and select <Align Here> from the pull-down menu. Other options allow users to quickly set all camera titles to the preset positions at once.

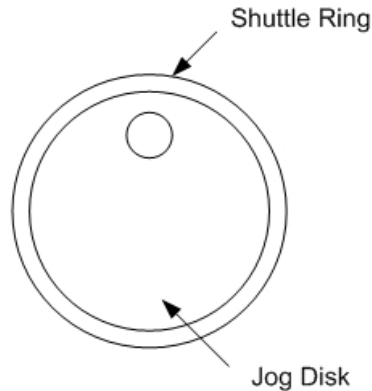
Appendix D: Keyboard Access Sketch

The following sketch shows the keys used to access and control the connected NVR.

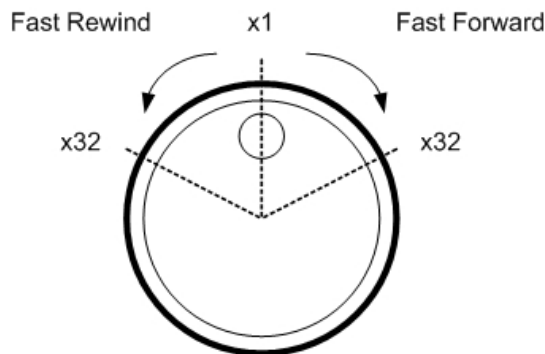


Appendix E: Jog / Shuttle Control

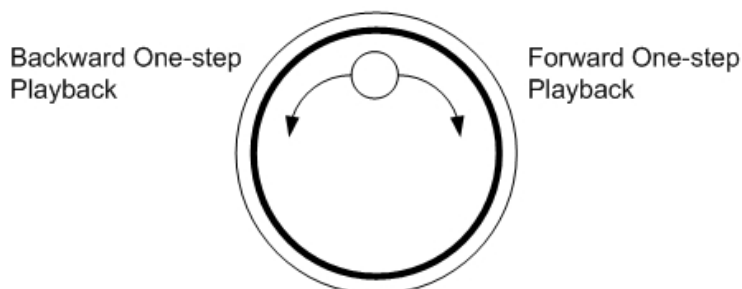
The jog/shuttle knob is used to provide wide latitude in playback control. Note that the jog/shuttle knob is active only when the NVR has been in Playback mode.



While playing back recorded video, users can rotate the shuttle ring to select different speed of forward and backward playback. Rotating the shuttle ring clockwise/counterclockwise causes the unit to playback faster forward/ backward. According to the rotating angle the shuttle ring, users can choose the playing speed from 1×, 2×, 4×, 8×, 16×, and 32×, in both forward and reverse directions, shown as below figure:



Inside the shuttle ring is the jog disk, shown as below figure. It can turn in either direction. Once the video is paused, users can use the jog disk to playback by single-step. Clockwise rotation causes a forward one-step playback; and counterclockwise rotation causes a backward one-step playback.



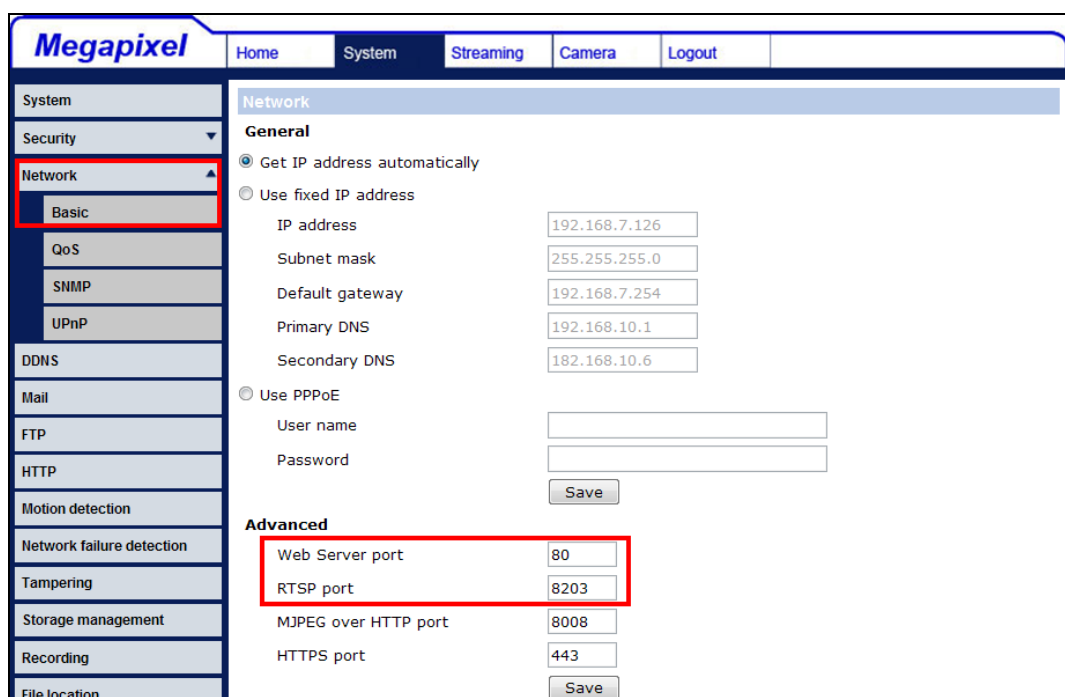
Appendix F: IP Camera Installation

The following is an example of connection to an IP camera via internet.

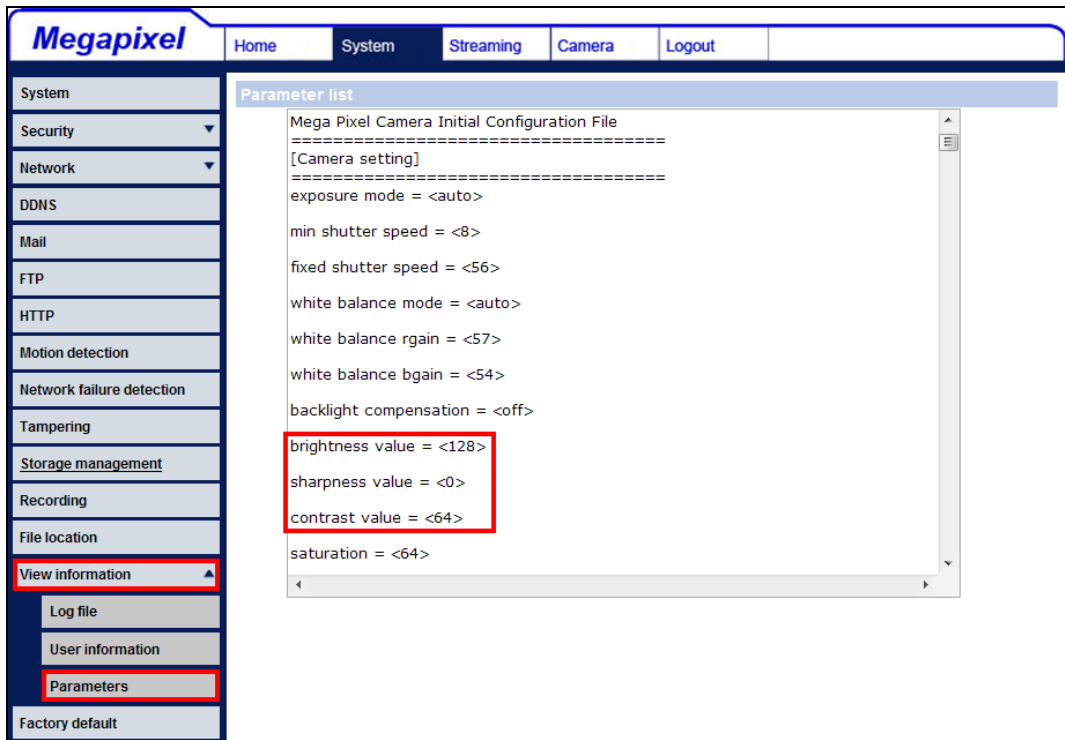
- Step 1.** Enter the IP address (for example: 192.168.1.242) of the IP camera to access its web management page. Login using the administrator's username and password (for example: Admin & 1234).



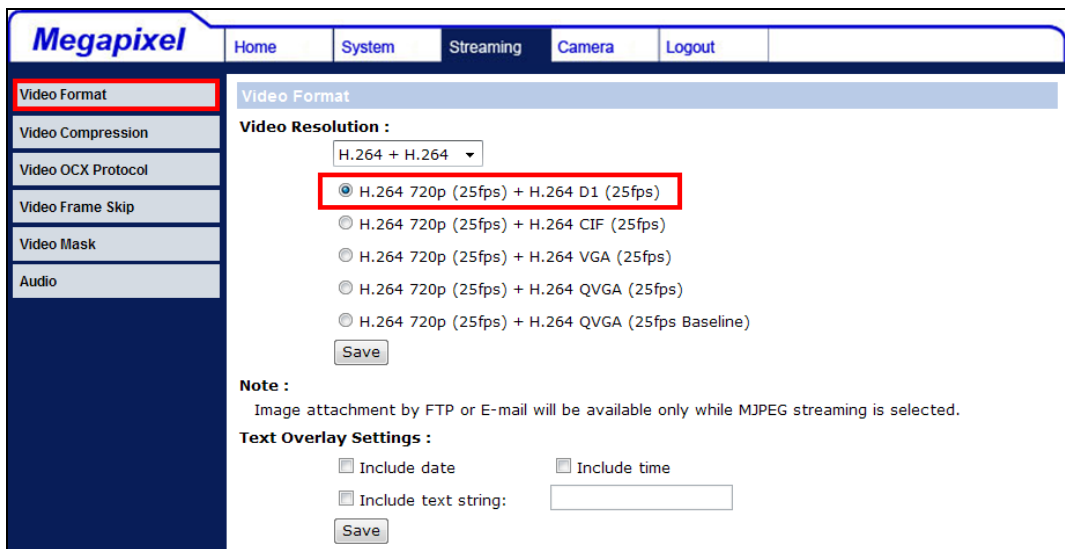
- Step 2.** Access the System menu and click on “Network” → “Basic” to find management port and RTSP port. The management port is **80** and the RTSP port is **8203**.



Step 3. Next click on “View information” → “Parameters” to look for current camera image settings: Brightness=128, Sharpness=0, and Contrast=64.



Step 4. Access the Streaming menu and click on “Video Format” to look up for video resolution: main stream=H.264 720p (25fps), dual stream=H.264 D1 (25fps).



Step 5. Access the **<Camera>** menu of the NVR to setup the IP camera. Select a preferred channel. The menu should look like the following:

IP Camera	
IP Camera Select	CH17
IP Camera Name	CH17
IP Camera Hidden	Off
Device Search	
Hostname/IP	192.168.1.242
Connection Setup	
Device Setup	
Activated	No
Status	
Copy Setting	

Step 6. If the IP camera is UPnP compatible and is in the local area network, select **<Device Search>** and press ENTER to automatically search for the IP camera. Alternatively, manually enter the Hostname/IP as 192.168.1.242.

Step 7. Access the **<Connection Setup>** menu to enter connection setting parameters: Account=**Admin**, Password=**1234**, and Management Port=**80**.

Connection Setup	
Account	Admin
Password	****
Management Port	80
Main Stream Setup	
Dual Stream Setup	
IP Dome Protocol	NONE
IP Dome ID	

Step 8. Access the **<Main Stream Setup>** menu to setup main stream configuration: Streaming Format=**H264**. If **<Advance Streaming Options>** is set to **<Off>**, the Streaming Port and Streaming Protocol will be setup automatically. If the parameters are different, set **<Advance Streaming Options>** to **<On>** and the values can be modified manually.

Main Stream Setup	
Streaming Format	H264
Advance Streaming Options	On
Streaming Index	Stream1
Streaming Port	8203
Streaming Protocol	RTP+RTSP

Step 9. If users wish to connect the IP camera via dual stream, access the **<Dual Stream Setup>** menu to setup dual stream configuration: Dual Streaming Support=**Yes**, Dual Streaming Recording=**Yes** or **No**, and Dual Streaming Format=**H264**. If **<Adv. Dual Streaming Options>** is set to **<Off>**, the Dual Streaming Port and Dual Streaming Protocol will be setup automatically. If the parameters are different, set **<Adv. Dual Streaming Options>** to **<On>** and the values can be modified manually.

Main Stream Setup	
Dual Streaming Support	Yes
Dual Streaming Recording	Yes
Dual Streaming Format	H264
Adv. Dual Streaming Options	On
Dual Streaming Index	Stream2
Dual Streaming Port	8203
Dual Streaming Protocol	RTP+RTSP

Step 10. Access the **<Device Setup>** menu to enter device setting parameters: Sharpness=**0**, Brightness=**128**, and Contrast=**64**.

Device Setup	
Product ID	Nx Series
Image Resolution	H264(720P)+H264(D1)
Sharpness	0
Brightness	128
Contrast	64
Apply	No

Step 11. Set **<Apply>** to **<Yes>** and the device setting parameters will be applied.

Step 12. Set **<IP Camera>** → **<Activated>** to **<Yes>** and the video from the IP camera should be displaying on the screen after a few seconds.

Step 13. Access **<IP Camera>** → **<Status>** and the current status of the IP camera will be displayed as shown below. The information is “read only”.

Status		
Model		Nx Series
Streaming Format	H264(MP)	H264(MP)
Resolution	1280×720	720×576
PPS	25.40	25.40
Bandwidth	189.34 KB/Sec	51.59 KB/Sec
Pkg. lost rate	0.00%	0.00%

Troubleshooting:

If the video does not show on the screen, perform the following checks:

1. Check if the target IP device is supported by the NVR. Make sure that <Streaming Port>, <Streaming Protocol>, and <Streaming Format> are set correctly.
2. Check the menu item <Hostname/IP>. Try to connect the IP camera via the browser directly and see if the video shows correctly.
3. Make sure the settings of the items <Account>, <Password>, and <Management Port> in <Connection Setup> are correct. Confirm items in <Device Setup> menu and see if the settings are correct. Try to connect the IP camera via the browser directly and see if the video shows correctly.
4. If everything seems to be correct, the problem might be bandwidth and performance.
 - ◆ Reduce the resolution, quality, or FPS of the IP camera.
 - ◆ Reduce the GOV/GOP setting.

Limitation:

The Alarm I/O function is not supported for IP cameras.