

DYNACOLOR

2015

IP Surveillance Solution
Product Catalogue

NETWORK CAMERA & PTZ
NETWORK VIDEO RECORDER
VIDEO MANAGEMENT SOFTWARE
SUPPORTING PRODUCT

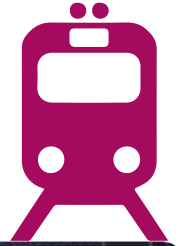


AIRPORT



PARKING

STATION



FREEWAY



STORE



I About

DynaColor specializes in video surveillance products and AOI systems. Headquartered in Taipei since 1991, DynaColor has achieved continuous growth and market recognition.

Digital Surveillance Solution

DynaColor designs and manufactures digital surveillance products, including speed dome cameras, fixed cameras, network video recorders (NVRs), video servers & decoders, and keyboard controllers. These products are used in various places, including retail stores, government facilities, schools, city halls, airports, military sites, prisons, parks, streets, banks, shopping malls, stadiums, and a wide range of other medium and high security applications.

DynaColor delivers digital surveillance solutions for small and large applications, from the very simple surveillance task with only a few cameras for small stores and buildings, to large installations with complex networks and needs.

A Reputation of Quality

DynaColor has established an excellent reputation not only in digital surveillance products, but also in the LCD AOI system and industrial cameras. Quality is controlled during every phase of development, as DynaColor is ISO-9001:2008 certified by DNV.

Technological advances and customer orientation are the keys to DynaColor's success in a rapidly changing market.

Through focused management and revenue-based incentive programs, DynaColor has quickly identified, executed, and excelled every planned product. By working closely with our partners, many well-known companies worldwide, DynaColor constantly improves our technology, operation, quality control, and manufacturing. It is our goal to become the leading provider of innovative products and a reliable business partner in each of our targeted sectors. DynaColor has established overseas branches in Irvine, California, in Tokyo, Japan and in Shanghai, China to facilitate sales activities and services for our customers abroad. To learn more about DynaColor, please visit our websites:
<http://www.dynacolor.com.tw>
<http://www.dynacolor.co.jp>

Corporate Strategy

• Technology-Driven

Enrich professional man-power, acquire and develop core technology.

• Strategic Alliance

Expand worldwide cooperative partnerships through technical alliance, marketing alliance and application alliance, 3 perspectives to provide professional total solutions and services.

• Niche Products

Provide full featured and value-added products, be customer orientated, and meet various market needs.



Greeting from CEO

For more than 23 years, DynaColor dedicates itself to be an "image solution provider." Starting with award-winning CRT alignment system, DynaColor became the industry leader in high quality, cost effective multiplexer and industrial camera over the years. In the rapidly changing digital surveillance market, DynaColor develops a wide range of competitive products, which offer our clients a comprehensive product portfolio and the flexibility for customization.

We believe having a strong R&D team is the foundation to provide our customers innovative solutions. With highly experienced engineers (over 30% of total employees) in DynaColor, we can assure our clients the competitiveness and reliability of our products. Through OEM projects, commissioned by top brands around the world, we possess the critical know-how and credentials to serve our clients in accordance to their specific needs. We adopt the ISO 9001 standard to regulate our administrative process and to ensure strict quality control process. It is our commitment to quality, innovation and customer support that provides our clients the advantage to excel in the ever evolving and highly competitive market.

In this year, amid optimistic prospect yet challenged by fierce competition in the industry, DynaColor will focus on providing our customers the total video surveillance solution, synchronizing video camera products, digital video recorders and system control units. With our advanced video processing technology, solid system integration credential and competence in customized products, we believe DynaColor is the solution for your video surveillance requirement.

H Series NVR

ULTRAWIN H.264 NETWORK VIDEO RECORDER



MODEL

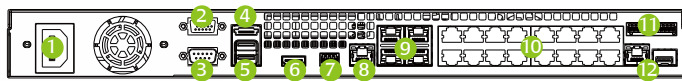
H100
H108 (8CH PoE)
H200
H216 (16CH PoE)

Front Panel



- | | |
|----------------------|-----------------|
| 1. HDD Cartridges | 5. Audio Output |
| 2. Camera Indicators | 6. Reset |
| 3. USB 2.0 Ports | 7. Status LEDs |
| 4. Audio Input | 8. Power Key |

Rear Panel



- | | |
|------------------|--------------------------|
| 1. Power Jack | 7. RS-485 |
| 2. VGA Output | 8. WAN 10/100/1000 Mbps |
| 3. RS-232 | 9. LAN 10/100/1000 Mbps |
| 4. e-SATA Port | 10. Built-in PoE Switch* |
| 5. USB 3.0 Ports | 11. Alarm I/O |
| 6. HDMI | 12. Uplink / SFP Combo |

Advanced Functions

- Up to 128 IP Channels Support*
- Built-in 8 / 16 Port PoE, 802.3at
- IP Camera Plug & Play Support*
- Full HD Local Display Output
- 3MP / 5MP / 4K IP Camera Support*
- Fisheye Dewarping*
- H.264 Baseline / Main Profile / MJPEG Recording and Playback*
- Secure Closed Circuit LAN for IP Cameras
- PoE Watchdog
- Self-Diagnosis System
- IP Camera Dual Stream Support*
- Up to 4 Internal SATA Ports
- Audio Recording*
- SFP Combo for Fiber Optics Transition
- Compatible with 3rd Party VMS Software

Humane Technology

- Export AVI Files for Microsoft® Media Player
- Intelligent Playback Search
- Manual / Schedule / Event Recording
- DDNS and IP Filter
- USB Mouse / Keyboard / Thumb Drive Support

Upgrade Kits

- DS80 e-SATA External Storage
- RAID Module, Support 0 / 1 / 5 / 10
- External PoE Switch with Built-in Alarm I/O and SFP Combo, Support Camera Plug & Play*

Note: Items marked with an asterisk (*) are optional

Advanced Functions

- Embedded Linux System
- Full HD Local Display Output
- 4 / 8 / 16 IP Channels Support
- 3MP / 5MP / 4K IP Camera Support
- H.264 / MJPEG Recording and Playback
- Built-in 4 / 8 / 16 Port PoE, 802.3at
- Secure Closed Circuit LAN for IP Cameras
- IP Camera Automatic Recovery
- IP Camera Plug & Play Support
- IP Camera Dual Stream Support
- Per Channel Recording Configuration
- Audio Recording
- Onvif Profile S Conformance
- Dyna**Remote**™ & Dyna**Guard**™ CMS Support
- iOS and Android Smartphones Support

Humane Technology

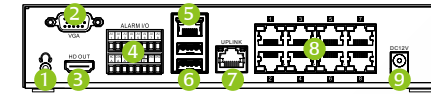
- Full HD GUI
- UPnP
- Export AVI Files for Microsoft® Media Player
- Panorama Search
- USB Mouse / Keyboard / Thumb Drive Support
- Push Video Notification (By Smartphone)
- RSS Instant Status Update
- Cloud Access
- Cloud Backup

Front Panel



1. USB 2.0 Port
2. Power Key
3. Status LEDs

Rear Panel



1. Audio Output
2. VGA Output
3. HDMI
4. Alarm I/O
5. LAN 10/100/1000 Mbps
6. USB 3.0 Ports
7. Uplink
8. Built-in PoE Switch*
9. Power Jack



MODEL

- M100
- M104 (4CH IP)
- M108 (8CH IP)
- M116 (16CH IP)
- M200
- M204 (4CH IP)
- M208 (8CH IP)
- M216 (16CH IP)

M Series NVR

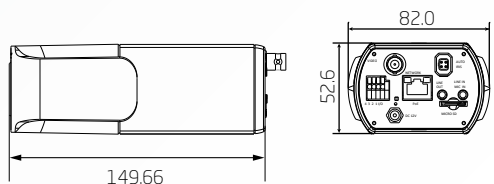
ULTRAECO H.264 NETWORK VIDEO RECORDER



Z6



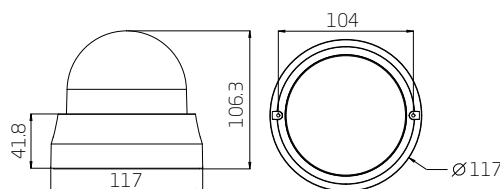
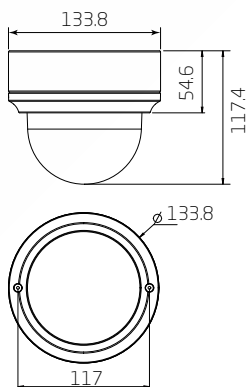
- Multiple Progressive Scan CMOS Sensors Support
- 4K Ultra HD 8M@30 fps / 6M@30 fps / 3M@60 fps / 2M@120 fps
- Specific ARM for Analytics Hardware Acceleration
- H.264 Baseline / Main Profile / High Profile and MJPEG Codec Support
- High Dynamic Range*
- 3D Motion Compensated Noise Reduction (MCTF)
- Text Overlay and Privacy Masks
- BNC Analog Output
- Auto Back Focus Support
- Onvif Profile S Conformance



- Multiple Progressive Scan CMOS Sensors Support
- 4K Ultra HD 8M@30 fps / 6M@30 fps / 3M@60 fps
- H.264 Baseline / Main Profile / High Profile and MJPEG Codec Support
- Intelligent Motion Detection and Tampering Alarm
- 3D Motion Compensated Noise Reduction (MCTF)
 - IR LED Module (Up to 40m)*
 - Weatherproof (IP66 International)*
- Triple Power Support (PoE, DC 12V and AC 24V)
 - Onvif Profile S Conformance

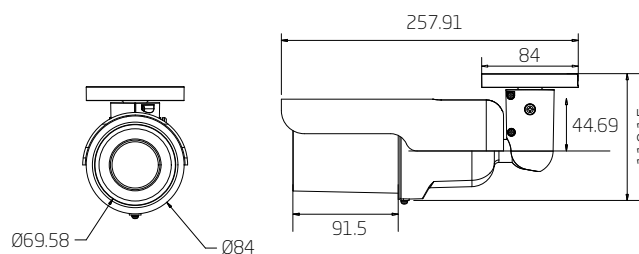


ZF



ZM

- Multiple Progressive Scan CMOS Sensors Support
- 4K Ultra HD 8M@30 fps / 6M@30 fps / 3M@60 fps
- H.264 Baseline / Main Profile / High Profile and MJPEG Codec Support
- Intelligent Motion Detection and Tampering Alarm
- 3D Motion Compensated Noise Reduction (MCTF)
 - IR LED Module (Up to 40m)*
 - Weatherproof (IP66 International)*
- Triple Power Support (PoE, DC 12V and AC 24V)
 - Onvif Profile S Conformance



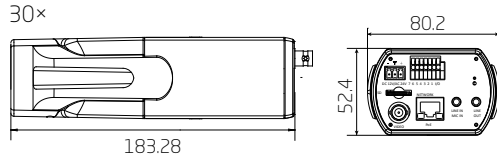
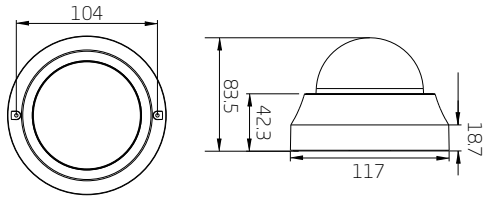
Z5

- Multiple Progressive Scan CMOS Sensors Support
- 4K Ultra HD 8M@30 fps / 6M@30 fps / 3M@30 fps
- H.264 Baseline / Main Profile / High Profile and MJPEG Codec Support
- Intelligent Motion Detection and Tampering Alarm
- 3D Motion Compensated Noise Reduction (MCTF)
 - IR LED Module (Up to 40m)*
 - BNC Analog Output
 - Weatherproof (IP66 International)
- Triple Power Support (PoE, DC 12V and AC 24V)
 - 3-Axis Cable Management Bracket
- All-in-One Cable (Alarm, Power, BNC and RJ-45)
 - Onvif Profile S Conformance



ZN

- Multiple Progressive Scan CMOS Sensors Support
- 4K Ultra HD 8M@30 fps / 6M@30 fps / 3M@60 fps
- H.264 Baseline / Main Profile / High Profile and MJPEG Codec Support
- Multiple and Dynamic Region of Interest (ROI) Windows
- Intelligent Motion Detection and Tampering Alarm
- 3D Motion Compensated Noise Reduction (MCTF)
- Text Overlay and Privacy Masks
- True Day/Night Function
- IR LED Module (Up to 30m)*
- Weatherproof (IP66 International)*
- Onvif Profile S Conformance



Z7

- Multiple Progressive Scan CMOS Sensors Support
- 3M / 4M@60 fps
- 3x / 30x Optical Zoom and Auto Focus
- P-iris Control (3x Zoom Model)*
- High Dynamic Range
- Specific ARM for Analytics Hardware Acceleration
- H.264 Baseline / Main Profile / High Profile and MJPEG Codec Support
- 3D Motion Compensated Noise Reduction (MCTF)
- Text Overlay and Privacy Masks
- Onvif Profile S Conformance

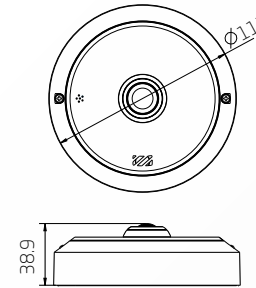


05

ZD

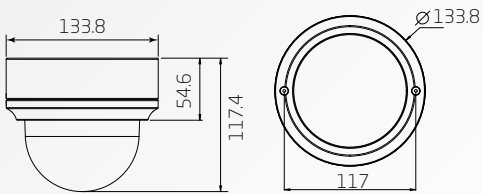
Actual Size

- Multiple Progressive Scan CMOS Sensors Support (4:3, 5:4 & 16:9 Aspect Ratios)
- Up to 6M@30 fps
- Edge Fisheye Dewarping: Wall (180°) or Ceiling (360°) Mount Support
- Digital PTZ Support
- True Day/Night Function
- Built-in Mic & Speaker
- Wide Dynamic Range
- Built-in IR LED (Up to 5m)
- Compact Elegant Design
- Onvif Profile S Conformance



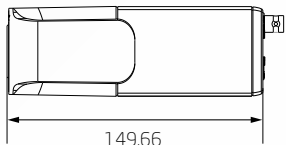
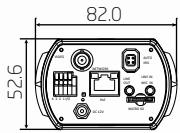
Unit: mm

Note: Items marked with an asterisk (*) are optional



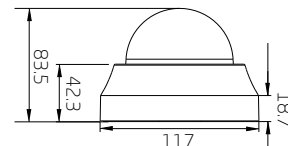
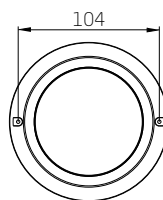
PF

- Multiple Progressive Scan CMOS Sensors Support
 - Up to 4M@30 fps
- Multiple Motorized Lens / AF Lens Support
 - Quad Stream Support
- Dual Streams: 4M@30 fps + D1@30 fps
- H.264 Baseline / Main Profile / High Profile and MJPEG Codec Support
 - High Dynamic Range
- IR LED Module (Up to 40m)*
 - IK10 Vandal Proof
- Conduit Installation Design
 - P-iris Control*
- Low Latency Live Streaming
- Triple Power Support (PoE, DC 12V and AC 24V)
 - Weatherproof (IP66 International)
 - Onvif Profile S Conformance



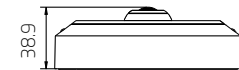
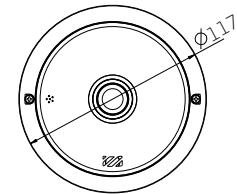
P6

- Multiple Progressive Scan CMOS Sensors Support
 - Up to 4M@30 fps
- Dual Stream Support
- Dual Streams: 4M@30 fps + D1@30 fps
- H.264 Baseline / Main Profile / High Profile and MJPEG Codec Support
- High Dynamic Range
- Low Latency Live Streaming
- Low Power Consumption on Encoding
- Auto Back Focus Support*
- BNC Analog Output
- RS-485 Support
- Triple Power Support (PoE, DC 12V and AC 24V)
- Onvif Profile S Conformance



PD

- Multiple Progressive Scan CMOS Sensors Support
 - Up to 4M@30 fps
- 360° Panoramic View
 - Dual Stream Support
- Dual Streams: 4M@30 fps + D1@30 fps
- H.264 Baseline / Main Profile / High Profile and MJPEG Codec Support
 - Wide Dynamic Range
- Built-in IR LED (Up to 5m)
- Edge Fisheye Dewarping: Wall (180°) or Ceiling (360°) Mount Support
 - Digital PTZ Support
- Multiple Dewarped Windows and Selectable Display Mode
 - microSDXC 64GB Support
 - PoE / DC 12V Support
- Weatherproof (IP66 International)*
 - Onvif Profile S Conformance



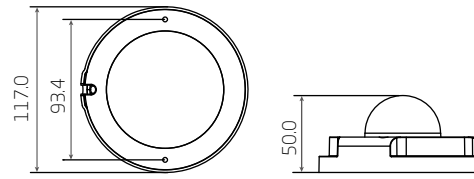
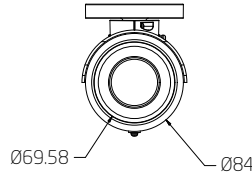
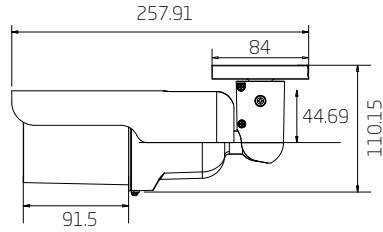
PN

- Multiple Progressive Scan CMOS Sensors Support
 - Up to 4M@30 fps
- Quad Stream Support
- Dual Streams: 4M@30 fps + D1@30 fps
- H.264 Baseline / Main Profile / High Profile and MJPEG Codec Support
- High Dynamic Range
- IR LED Module (Up to 30m)*
- 3-Axis Adjustable Design
- Low Power Consumption on Encoding
- Intelligent Motion Detection and Tampering Alarm
- True Day/Night Function
- Compact Elegant Design
- Triple Power Support (PoE, DC 12V and AC 24V)
- Weatherproof (IP66 International)*
- Onvif Profile S Conformance



P5

- Multiple Progressive Scan CMOS Sensors Support
- Up to 4M@30 fps
- Multiple Lens Support
- Quad Stream Support
- Dual Streams: 4M@30 fps + D1@30 fps
- H.264 Baseline / Main Profile / High Profile and MJPEG Codec Support
- High Dynamic Range
- IR LED Module (Up to 40m)*
- 3-Axis Cable Management Bracket
- All-in-One Cable (Alarm, Power, BNC and RJ-45)
- P-Iris Control*
- True Day/Night Function
- Triple Power Support (PoE, DC 12V and AC 24V)
- Weatherproof (IP66 International)*
- Onvif Profile S Conformance

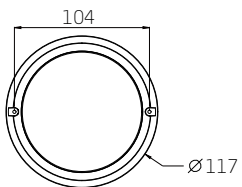
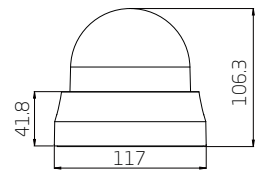


P1



- Multiple Progressive Scan CMOS Sensors Support
 - Up to 4M@30 fps
 - Quad Stream Support
- Dual Streams: 4M@30 fps + D1@30 fps
- H.264 Baseline / Main Profile / High Profile and MJPEG Codec Support
 - High Dynamic Range*
 - Low Latency Live Streaming
- Low Power Consumption on Encoding
 - 2D/3D Noise Reduction
- microSDXC 64GB Support
- Weatherproof (IP66 International)*
- Onvif Profile S Conformance

PM

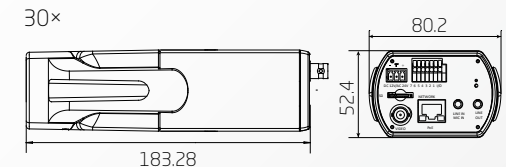


- Multiple Progressive Scan CMOS Sensors Support
- Up to 4M@30 fps
- Quad Stream Support
- Dual Streams: 4M@30 fps + D1@30 fps
- H.264 Baseline / Main Profile / High Profile and MJPEG Codec Support
- High Dynamic Range
- IR LED Module (Up to 40m)*
- 3-Axis Adjustable Design
- P-iris Control*
- Intelligent Motion Detection and Tampering Alarm
- True Day/Night Function
- Compact Elegant Design
- Triple Power Support (PoE, DC 12V and AC 24V)
- Weatherproof (IP66 International)*
- Onvif Profile S Conformance

07



- # P7
- Multiple Progressive Scan CMOS Sensors Support
 - Up to 4M@30 fps
 - 3x / 30x Optical Zoom and AF
 - Dual Stream Support
 - Dual Streams: 4M@30 fps + D1@30 fps
 - H.264 Baseline / Main Profile / High Profile and MJPEG Codec Support
 - High Dynamic Range
 - Low Latency Live Streaming
 - Smart Event
 - BNC Analog Output
 - RS-485 Support
 - Triple Power Support (PoE, DC 12V and AC 24V)
 - Onvif Profile S Conformance

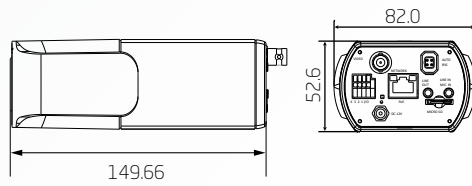


Unit: mm

Note: Items marked with an asterisk (*) are optional

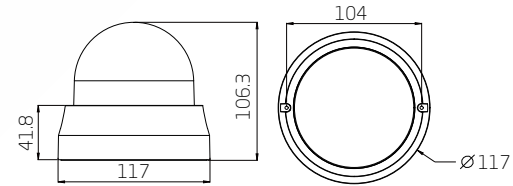


Q6



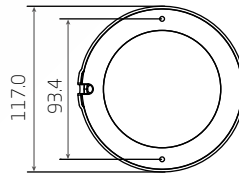
- Multiple Progressive Scan CMOS Sensors Support
- Dual Stream Support
- Dual Streams: 3M@30 fps + SVGA@30 fps / 4M@15 fps + XGA@30 fps
- H.264 Baseline / Main Profile / High Profile and MJPEG Codec Support
- High Dynamic Range
- Low Latency Live Streaming
- Low Power Consumption on Encoding
- Auto Back Focus Support*
- BNC Analog Output
- RS-485 Support
- Triple Power Support (PoE, DC 12V and AC 24V)
- Onvif Profile S Conformance

QM

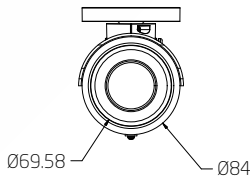
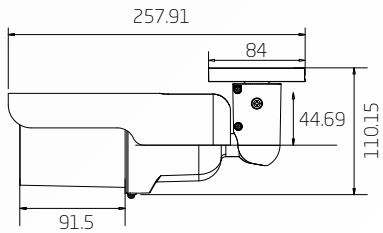
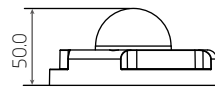


- Multiple Progressive Scan CMOS Sensors Support
 - Up to 4M@15 fps
 - Quad Stream Support
- Dual Streams: 3M@30 fps + SVGA@30 fps / 4M@15 fps + XGA@30 fps
 - H.264 Baseline / Main Profile / High Profile and MJPEG Codec Support
 - High Dynamic Range
 - IR LED Module (Up to 40m)*
 - 3-Axis Adjustable Design
 - P-iris Control
- Intelligent Motion Detection and Tampering Alarm
 - True Day/Night Function
- Triple Power Support (PoE, DC 12V and AC 24V)
 - Weatherproof (IP66 International)*
 - Onvif Profile S Conformance

Q1



- Multiple Progressive Scan CMOS Sensors Support
- Up to 3M@30 fps
- Quad Stream Support
- Dual Streams: 3M@30 fps + SVGA@30 fps / 4M@15 fps + XGA@30 fps
- H.264 Baseline / Main Profile / High Profile and MJPEG Codec Support
- High Dynamic Range*
- Low Latency Live Streaming
- Low Power Consumption on Encoding
- microSDXC 64GB Support
- 2D/3D Noise Reduction
- Weatherproof (IP66 International)*
- Onvif Profile S Conformance

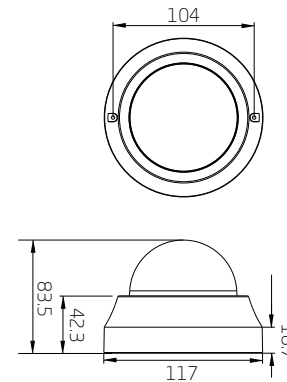


- Multiple Progressive Scan CMOS Sensors Support
- Up to 4M@15 fps
- Multiple Lens Support
- Quad Stream Support
- Dual Streams: 3M@30 fps + SVGA@30 fps / 4M@15 fps + XGA@30 fps
- H.264 Baseline / Main Profile / High Profile and MJPEG Codec Support
- High Dynamic Range
- IR LED Module (Up to 40m)*
- 3-Axis Cable Management Bracket
- All-in-One Cable (Alarm, Power, BNC and RJ-45)
- P-Iris Control*
- Triple Power Support (PoE, DC 12V and AC 24V)
- Weatherproof (IP66 International)*
- Onvif Profile S Conformance

Q5



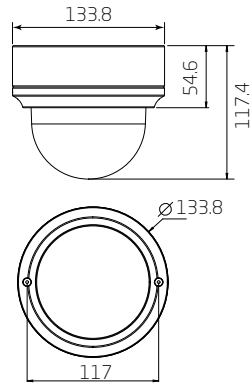
QN



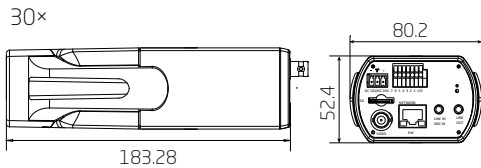
- Multiple Progressive Scan CMOS Sensors Support
- Up to 4M@15 fps
- Quad Stream Support
- Dual Streams: 3M@30 fps + SVGA@30 fps / 4M@15 fps + XGA@30 fps
- H.264 Baseline / Main Profile / High Profile and MJPEG Codec Support
- High Dynamic Range
- IR LED Module (Up to 40m)*
- 3-Axis Adjustable Design
- P-iris Control
- Intelligent Motion Detection and Tampering Alarm
- True Day/Night Function
- Triple Power Support (PoE, DC 12V and AC 24V)
- Weatherproof (IP66 International)*
- Onvif Profile S Conformance



QF



- Multiple Progressive Scan CMOS Sensors Support
- Up to 4M@15 fps
- Multiple Motorized Lens / AF Lens Support
- Quad Stream Support
- Dual Streams: 3M@30 fps + SVGA@30 fps / 4M@15 fps + XGA@30 fps
- H.264 Baseline / Main Profile / High Profile and MJPEG Codec Support
- High Dynamic Range
- IR LED Module (Up to 40m)*
- IK10 Vandal Proof
- Conduit Installation Design
- P-iris Control*
- Triple Power Support (PoE, DC 12V and AC 24V)
- Weatherproof (IP66 International)
- Onvif Profile S Conformance



09

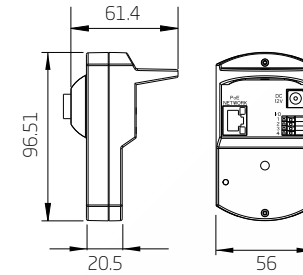
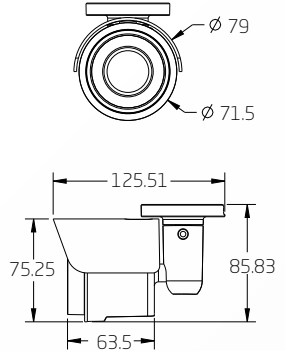
- Multiple Progressive Scan CMOS Sensors Support
- 3x / 30x Optical Zoom and AF
- Dual Stream Support
- Dual Streams: 3M@30 fps + SVGA@30 fps / 4M@15 fps + XGA@30 fps
- H.264 Baseline / Main Profile / High Profile and MJPEG Codec Support
- High Dynamic Range
- Low Latency Live Streaming
- Smart Event
- BNC Analog Output
- RS-485 Support
- Triple Power Support (PoE, DC 12V and AC 24V)
- Onvif Profile S Conformance

Q7

QJ



- Multiple Progressive Scan CMOS Sensors Support
- Smart Focus Lens Support
- Dual Stream Support
- Dual Streams: 3M@30 fps + SVGA@30 fps / 4M@15 fps + XGA@30 fps
- H.264 Baseline / Main Profile / High Profile and MJPEG Codec Support
- High Dynamic Range
- IR LED Module (Up to 15m)*
- Low Latency Live Streaming
- Low Power Consumption on Encoding
- Smart IR Mode
- microSDXC 64GB Support
- 3-Axis Cable Management Bracket
- PoE / DC 12V Support
- Weatherproof (IP66 International)*
- Onvif Profile S Conformance



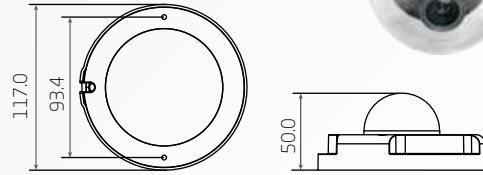
QH

- Multiple Progressive Scan CMOS Sensors Support
- Multiple M12 Mount Lens Support
- Dual Stream Support
- Dual Streams: 3M@30 fps + SVGA@30 fps / 4M@15 fps + XGA@30 fps
- H.264 Baseline / Main Profile / High Profile and MJPEG Codec Support
- High Dynamic Range
- Built-in IR LED (Up to 5m)
- Low Latency Live Streaming
- Low Power Consumption on Encoding
- 1 Alarm Inputs, 1 Alarm Outputs
- Built-in Mic & Speaker
- microSDXC 64GB Support
- PoE / DC 12V Support
- Onvif Profile S Conformance



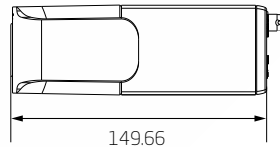
Unit: mm

Note: Items marked with an asterisk (*) are optional



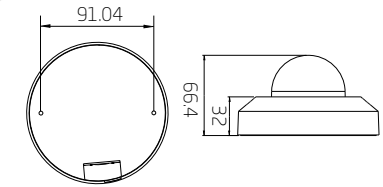
X1

- Sony Progressive Scan CMOS Sensor
- 1.3M / 2M Resolution*
- Quad Stream Support
- Dual Streams:
Full HD 1080P@60 fps + D1@30 fps
- Ultra Dynamic Range (Up to 120dB)
- 3D Noise Reduction / 2D Noise Reduction
- Weatherproof Dongle Cable*
- Weatherproof (IP66 International)*
- Security Torx Against Tampering
- Onvif Profile S Conformance



X6

- Sony Progressive Scan CMOS Sensor
- 1.3M / 2M Resolution*
- C/CS Mount Lens
- Quad Stream Support
- Dual Streams:
Full HD 1080P@60 fps + D1@30 fps
- Ultra Dynamic Range (Up to 120dB)
- Triple Power Support (PoE, DC 12V and AC 24V)*
- BNC Analog Output
- RS-485 Support*
- Auto Back Focus Support*
- Onvif Profile S Conformance



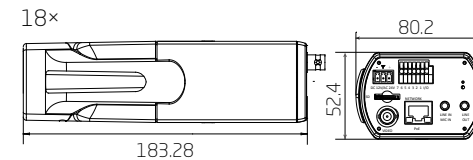
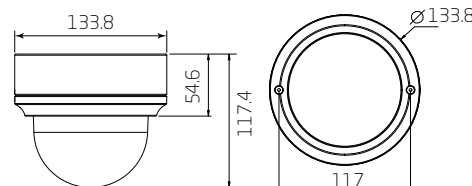
XL

- Sony Progressive Scan CMOS Sensor
- Quad Stream Support
- Ultra Dynamic Range (Up to 120dB)
- 3D Noise Reduction / 2D Noise Reduction
- Smart IR Mode
- Built-in Mic & Speaker*
- True Day/Night Function
- Compact Outlook with Built-in IR LED Module (Up to 5m)
- Digital Image Stabilization
- Weatherproof (IP66 International)*
- Onvif Profile S Conformance

XF



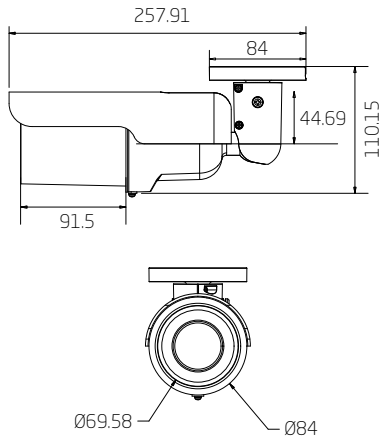
- Sony Progressive Scan CMOS Sensor
- 1.3M / 2M Resolution*
- Quad Stream Support
- Dual Streams: Full HD 1080P@60 fps + D1@30 fps
- Ultra Dynamic Range (Up to 120dB)
- High Power PoE+ (802.3at)*
- BNC Analog Output
- IR LED Module (Up to 25m)*
- Weatherproof (IP66 International)*
- Onvif Profile S Conformance



X7

- Sony Progressive Scan CMOS Sensor
- 3x / 18x Optical Zoom and AF
- P-iris Control (3x Zoom Model)*
- Quad Stream Support
- Ultra Dynamic Range (Up to 120dB)
- 3D Noise Reduction / 2D Noise Reduction
- Smart IR Mode
- Network Failure Detection
- True Day/Night Function
- Digital Image Stabilization
- Onvif Profile S Conformance





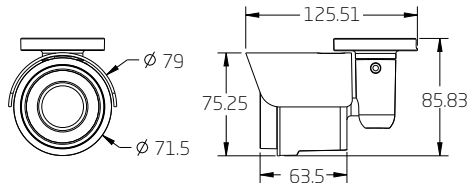
- Sony Progressive Scan CMOS Sensor
 - 1.3M / 2M Resolution*
 - Quad Stream Support
- Dual Streams: Full HD 1080P@60 fps + D1@30 fps
 - Ultra Dynamic Range (Up to 120dB)
 - True Day/Night Function
 - Digital Image Stabilization
 - IR LED Module (Up to 25m)*
 - High Power PoE+ (802.3at)*
- 3-Axis Cable Management Bracket
- All-in-One Cable (Alarm, Power, BNC and RJ-45)
 - P-iris Control (3x Zoom Model)*
 - BNC Analog Output
- Onvif Profile S Conformance

X5



XJ

- Sony Progressive Scan CMOS Sensor
 - 1.3M / 2M Resolution*
- Quad Stream Support
- Dual Streams: Full HD 1080P@60 fps + D1@30 fps
- Ultra Dynamic Range (Up to 120dB)
- IR LED Module (Up to 15m)
- Smart IR Mode
- True Day/Night Function
- Digital Image Stabilization
- Weatherproof (IP66 International)*
- Onvif Profile S Conformance



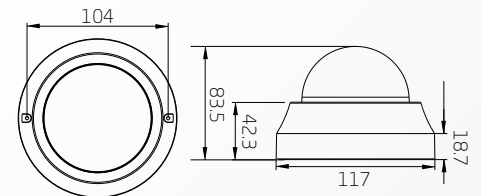
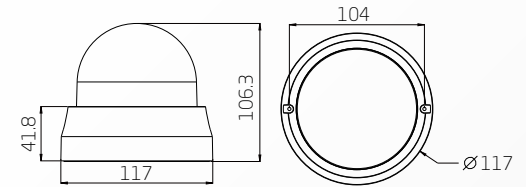
XN

- Sony Progressive Scan CMOS Sensor
 - 2M Resolution*
- Quad Stream Support
- Dual Streams: Full HD 1080P@60 fps + D1@30 fps
- Ultra Dynamic Range (Up to 120dB)
- 3-Axis Adjustable Design
- Smart IR Mode
- Network Failure Detection
- True Day/Night Function
- IR LED Module (Up to 25m)*
- Digital Image Stabilization
- Weatherproof (IP66 International)*
- Onvif Profile S Conformance



XM

- Sony Progressive Scan CMOS Sensor
 - 1.3M / 2M Resolution*
 - Quad Stream Support
- Dual Streams: Full HD 1080P@60 fps + D1@30 fps
 - Ultra Dynamic Range (Up to 120dB)
- 3D Noise Reduction / 2D Noise Reduction
 - Smart IR Mode
- Network Failure Detection
- True Day/Night Function
- IR LED Module (Up to 25m)*
- Digital Image Stabilization
- Weatherproof (IP66 International)*
- Onvif Profile S Conformance





Full HD Ultra WDR Speed Dome

720/820Z-E

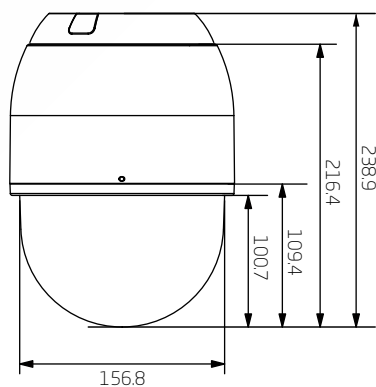
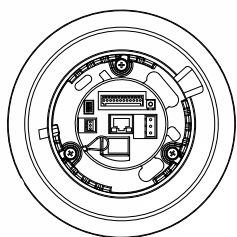
- Sony Progressive Scan CMOS Sensor
- Up to 30x Optical Zoom
- F1.4, Large Aperture
- 12x Digital Zoom
- Ultra Dynamic Range (>96db)
- Supreme Frame Rate Support: 1080P@60 fps + D1@30 fps
- Quad Stream Support
- H.264 Baseline / Main Profile / High Profile + MJPEG Codec Support
- Electronic Image Stabilizer
- 2D / 3D Noise Reduction
- 802.3at 60W PoE+ Support for Heater Activation*
- Weatherproof (IP66 International)*
- Onvif Profile S Conformance

3M Real-time Speed Dome

720/820Z-M

- Sony Progressive Scan CMOS Sensor
- Up to 30x Optical Zoom
- F1.4, Large Aperture
- 10x Digital Zoom
- Wide Dynamic Range
- Image Defog Feature
- 3M@30 fps + SXGA@30 fps
- Supreme Frame Rate Support: 1080P@60 fps + D1@30 fps
- Quad Stream Support
- H.264 Baseline / Main Profile / High Profile + MJPEG Codec Support
- 2D Noise Reduction
- 802.3at 60W PoE+ Support for Heater Activation*
- Weatherproof (IP66 International)*
- Onvif Profile S Conformance

720
INDOOR



Ceiling-Mounting

P-HM4-00



Pendant-Mounting

P-IM3-00
(720 Model)



Pendant-Mounting

P-IM0-00
(820 Model)



Inceiling-Mounting

P-TM5-00

Unit: mm

Note: Items marked with an asterisk (*) are optional

NEW

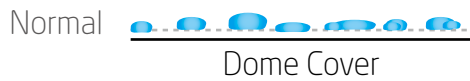
WATER-REPEL DOME COVER



6.2" Dome Cover

Adopting hydrophobic coating, the water-repellent dome cover avoids water attaching to the dome cover and provides consistent clear images in rainy weather. When water droplets fall on the water-repellent dome cover, the small water droplets become cohesive with each other and soon flow away from the cover surface without adhering to the cover and blocking the view. Moreover, the water-repellent surface possess self-cleaning property that dirt or dust attached to the cover surface will be picked up and washed off by water droplets, leaving stainless cover surface and clearer images.

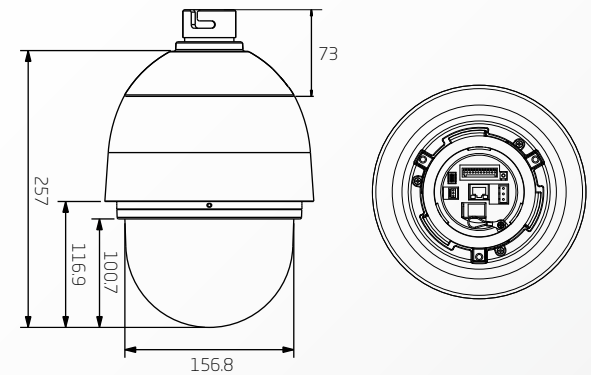
The figures below illustrate the differences between dome cover surfaces with and without water-repellent coating.



*Available For A Model / F Model / M Model / 820 Model



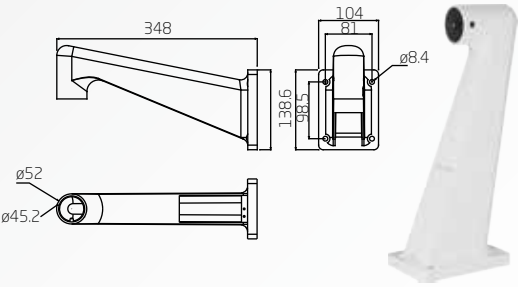
820
OUTDOOR



Standard Pendant Mount

P-SPX-00

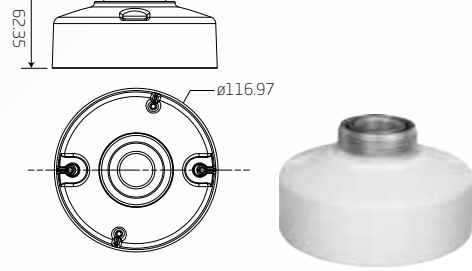
*Anti Rust is optional



Mini Dome Mount Kit

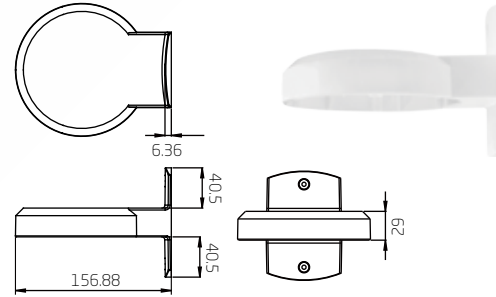
C-IM2-00

NPT 3/4" (in) NPT 1-1/2" (out)



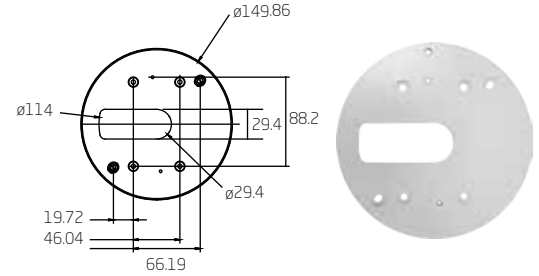
Rugged Dome Wall Mount Bracket

C-BR6-00



Mini Dome 4S Box Adaptor

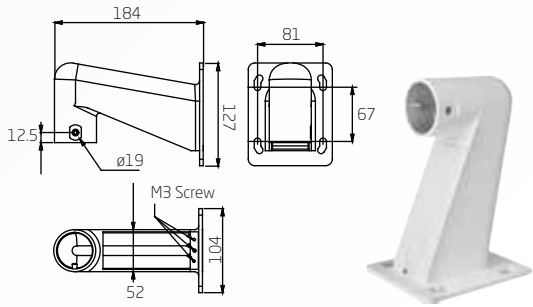
C-BA1-00



Mini Pendant Mount

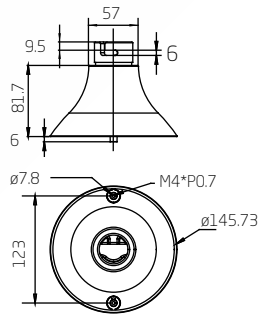
P-MPX-00

*Anti Rust is optional



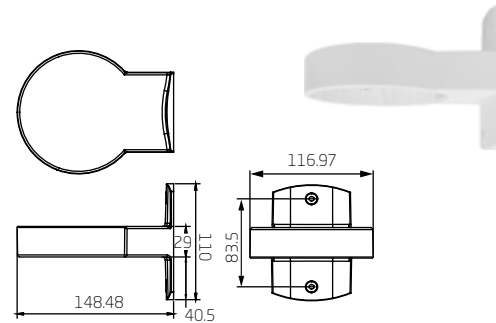
Compact Dome Mount Kit

C-IM7-00



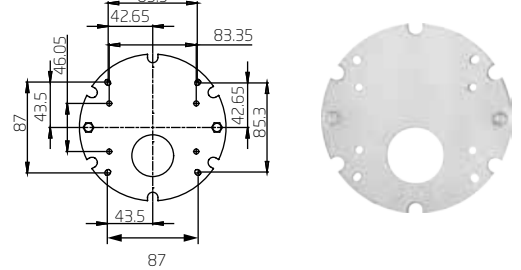
Mini Dome Wall Mount Bracket

C-BR5-00



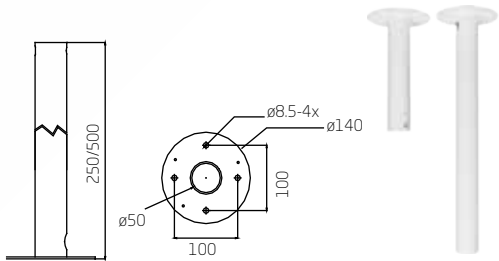
Compact Dome 4S Box Adaptor

C-BA2-00



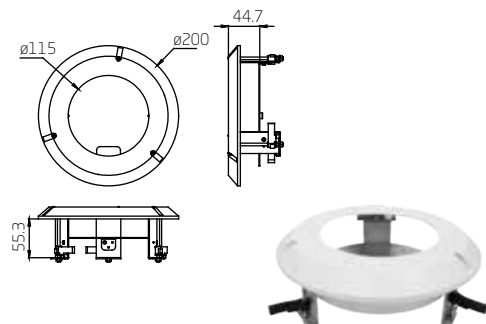
Straight Tube

P-STX-00



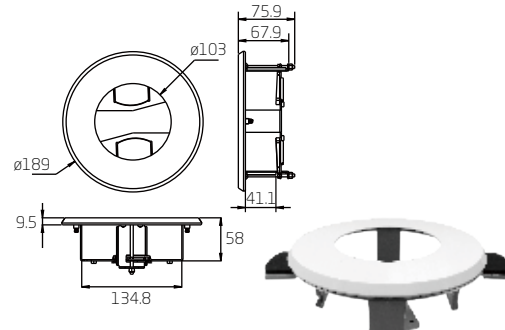
Vandal Dome T-Bar

C-TM2-00



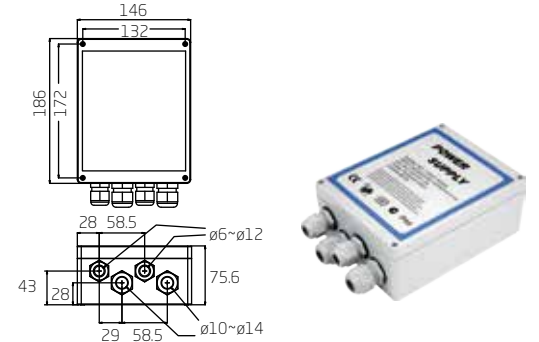
Rugged Dome T-Bar

C-TM3-00



Power Box

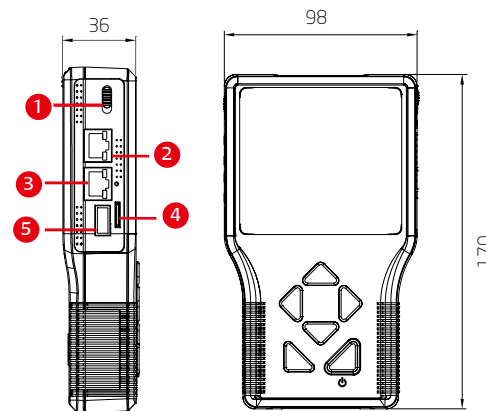
D77H07



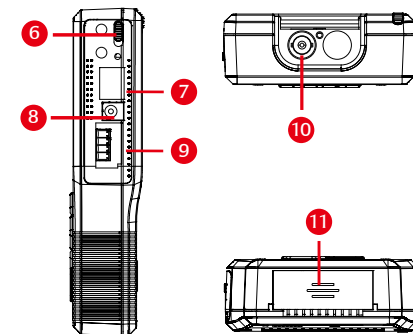
IP Camera Tester

DT-2

- 3.5" with 320 X 240 QVGA Resolution
- 10/100 Mbps Ethernet with RJ-45 Connector
- 30W PoE+ (802.3at) Support
- PoE Meter Function Support
- 3MP / 5MP IP Camera Support
- H.264 / MJPEG Video Decode Support
- Onvif Profile S Conformance
- Local Video Storage and Playback
- PTZ Control (Ethernet / RS-485)
- Major IP Cameras and Protocols Support
- High Capacity Li-ion Battery
- UTP Cable Test
- NTSC / PAL Video In and Out / Audio In / Speaker Out



1. PoE Switch Bypass / Power Bank
2. LAN / PoE Out
3. LAN / PoE In
4. Micro SD
5. USB



6. Power On / Off
7. CAT5
8. DC12V
9. RS-485
10. AV In
11. Speaker

Unit: mm

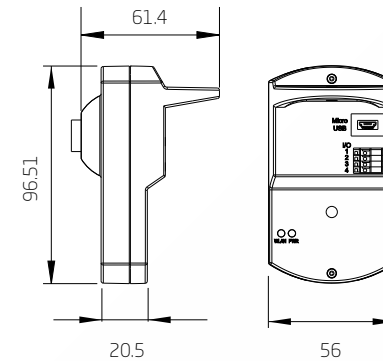
Note: Items marked with an asterisk (*) are optional



WiFi Camera

WH - WiFi

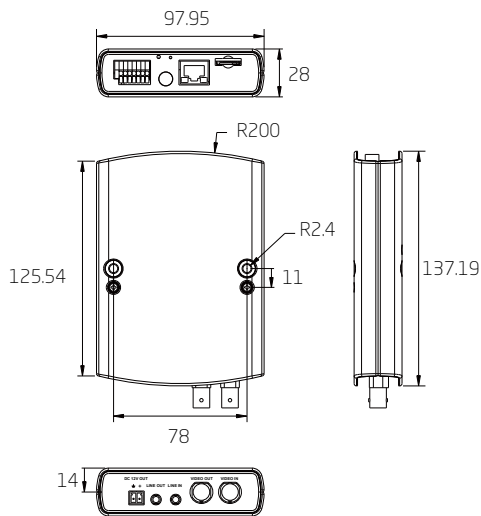
- Progressive Scan CMOS Sensor
- 2M / 3M Resolution
- Wide Dynamic Range
- 802.11 b/g/n, WiFi Connection
- Built-in Mic & Speaker*
- True Day/Night Function
- IR LED Module (Up to 5m)
- Micro SD Support
- Micro USB DC5V Support
- Onvif Profile S Conformance



Video Server

WS

- Dual Streams: D1 + D1@60 fps
- Quad Stream Support
- H.264 Baseline / Main Profile / High Profile and MJPEG Codec support
- Alarm Input / Output
- BNC Input / Output
- Line In / Line Out
- RS-485 Support
- DC 12V Power Output
- Triple Power Support: PoE, DC 12V~ 48V and AC 24V
- Onvif Profile S Conformance

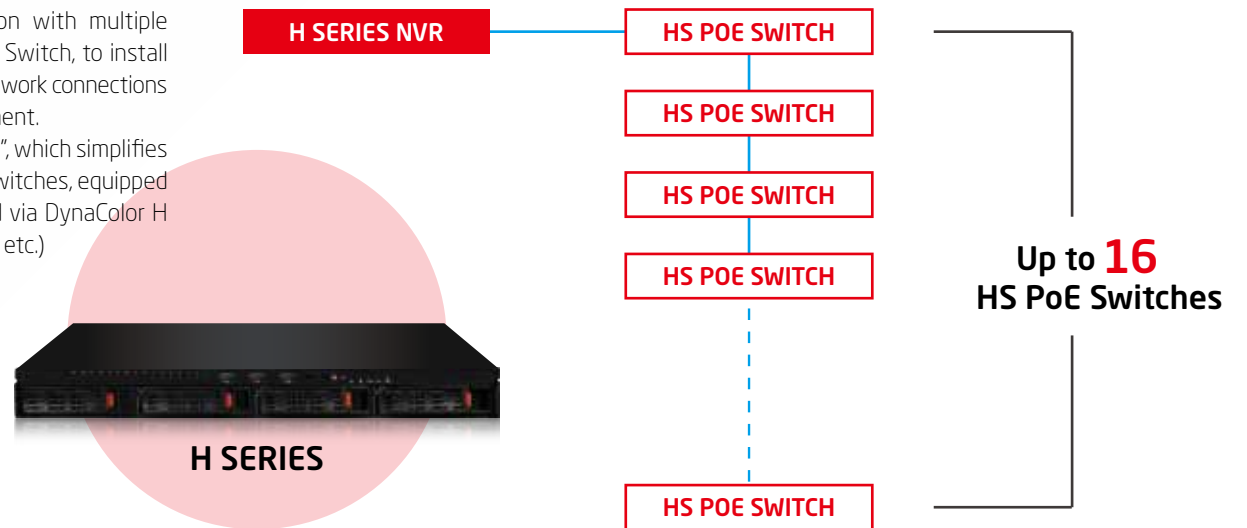


NEW

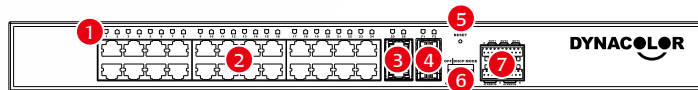
PoE Management

DynaColor H Series is applicable to simultaneous connection with multiple external PoE Switches, the exclusive DynaColor HS Web Smart Switch, to install more IP cameras / devices. Such combination not only expands network connections but also enhances the thorough security in the target environment. Both embedded and external PoE switches support "Plug N' Play", which simplifies the IP camera / device installation, at the same time, both PoE switches, equipped with smart Web management, can be managed and monitored via DynaColor H Series (settings include connection status, power consumption, etc.)

SYSTEM DIAGRAM



Front Panel



- 1. Status LEDs
- 2. Built-in PoE Switch
- 3. LAN 10/100/1000 Mbps
- 4. Uplink / SFP Combo
- 5. Reset
- 6. DHCP
- 7. Alarm I/O

Rear Panel



- 1. Power Jack

Smart PoE Switch

HS Series

- Up to 24 Port PoE, 802.3at
- Built-in DHCP Server
- Per Channel PoE Management
- PoE Watchdog
- SFP Combo Port

MODEL

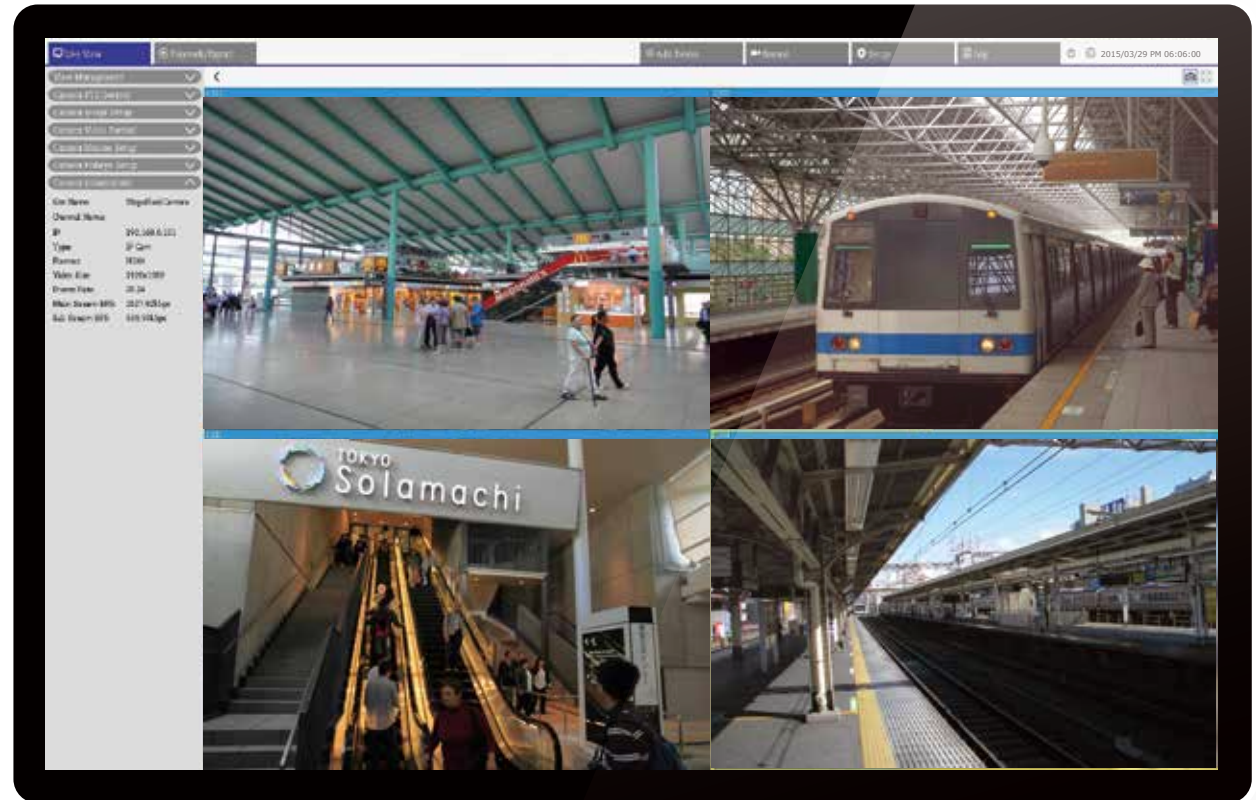
- HS08
- HS16
- HS24



Video Management Software

VMS

- PC-based Recording and Monitoring Software
- Simultaneously up to 128 Channels Live View
- Support DVR / NVR / IP Camera
- Up to 4K Ultra HD (8M) Resolution Support
- Scheduled Recording
- Event Playback and Alert Notification
- PTZ Control
- Fisheye Dewarping
- Relay Output Control
- Direct IP Camera Configuration
- Digital PTZ Support
- Multiple Language Support
- PoE Management*



Unit: mm

*Only available while loading VMS on Dynacolor NVR and using Dynacolor HS Series PoE Switch

Quad Streaming IP Camera - W Series

				
W1	W2	W3	W5	W6
Micro Dome Camera	Vandal Dome Camera	Lite Dome Camera	IR LED Bullet Camera	Box Camera
				
W7	W8	WA	WB	WF
AF Zoom Camera	Fisheye IR LED Camera	Compact Dome Camera	Compact Bullet Camera	Rugged Dome Camera
				
WH	WJ	WL	WM	WN
Micro Box Camera	Micro Bullet Camera	Micro Dome Camera	Mini Dome Camera	Mini Dome Camera

Ultra Dynamic Range IP Camera - X Series

				
X1	X5	X6	X7	XF
Micro Dome Camera	IR LED Bullet Camera	ABF Box Camera	AF Zoom Camera	Compact Dome Camera
				
XB	XJ	XL	XM	XN
Compact Bullet Camera	Micro Bullet Camera	Micro Dome Camera	Mini Dome Camera	Mini Dome Camera

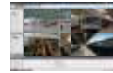
Hyper IP Camera - Z Series

				
Z5	Z6	Z7	Z8	ZA
IR LED Bullet Camera	ABF Box Camera	AF Zoom Camera	Fisheye IR LED Camera	Compact Dome Camera
				
ZD	ZF	ZM	ZN	
Mini Fisheye/IR LED Camera	Rugged Dome Camera	Mini Dome Camera	Mini Dome Camera	









Supporting Product

		
DT-2	VD4	WS
IP Camera Tester	Video Decoder	Video Server

Video Surveillance Software


VMS
Video Management Software



Superior IP Camera - P Series

			
P1	P5	P6	P7
Micro Dome Camera	IR LED Bullet Camera	ABF Box Camera	AF Zoom Camera
			
PD	PF	PM	PN
Mini Fisheye IR LED Camera	Rugged Dome Camera	Mini Dome Camera	Mini Dome Camera



Prime IP Camera - Q Series

				
Q1	Q5	Q6	Q7	QF
Micro Dome Camera	IR LED Bullet Camera	ABF Box Camera	AF Zoom Camera	Rugged Dome Camera
				
QM	QN	QJ	QH	
Mini Dome Camera	Mini Dome Camera	Micro Bullet Camera	Micro Box Camera	



Hyper IP High Speed Dome

	
720/820Z-M Module	720/820Z-E Module
3M 30X Digital WDR Speed Dome	1080P 30X Shutter WDR Speed Dome





H.264 Network Video Recorder - Linux / Windows Based

	
H100	H200
Plug N' Play, Embedded PSE, Alarm I/O, SFP Combo	Plug N' Play, Embedded PSE, Alarm I/O, SFP Combo, Selectable CPU

H.264 Network Video Recorder - Linux Based

	
M100	M200
4 / 8 Built-in PoE, 1080P Local Display, 4K Camera Support, Plug N' Play	16 Built-in PoE, 1080P Local Display, 4K Camera Support, Plug N' Play, Embedded PSE

iOS / Android / Mac / PC Software

			
NetGuard	NetGuard HD	XGuard	DroidGuard
for iPhone/iPod Touch	for iPad	for MAC OS	for Android Phone

QUALITY POLICY OF DYNACOLOR

DELIVERING THE ULTIMATE QUALITY PRODUCTS
AND QUALITY SERVICES FOR OUR CUSTOMERS



USA

CHINA

JAPAN

TAIWAN (HEADQUARTERS)

❖ DynaColor (USA), INC.

Irvine Business Park, Suite 108, 9272 Jeronimo Road, Irvine, CA 92618, USA
Toll Free Phone: +1-866-DYNA-USA / +1-866-396-2872
Main Phone: +1-949-297-3700 / Fax: +1-949-297-3737
E-mail: info@dynacolorusa.com

❖ DynaColor (Japan), INC.

202 Hirakawa-cho Court, 1-1-1 Hirakawa-cho, Chiyoda-ku, Tokyo, 102-0093 Japan
Tel: +81-3-3265-0037 / Fax: +81-3-3265-0038
E-mail: info@dynacolor.co.jp
URL: http://www.dynacolor.co.jp

❖ DynaColor (China) Shanghai Office

7F-8, No. 889, Yanan W. Road, Changning, Shanghai, China
Tel: +86-21-5204-8689 / Fax: +86-21-5204-9009

❖ DynaColor Factory (Fab1)

4F, No. 189, Kang Chien Road, Neihu, Taipei 114, Taiwan
Tel: +886-2-2659-6799 / Fax: +886-2-2659-0700

❖ DynaColor Factory (Fab2)

9F, No. 209, Nan Yang Street, Xizhi, New Taipei City 221, Taiwan
Tel: +886-2-2695-8199 / Fax: +886-2-2695-6989

❖ DynaColor (China) Factory

No.71-1, Dongwu South Road, Wuzhong Economic Development Zone, Suzhou, China
Tel: +86-512-660-53358 / Fax: +86-512-660-51838



DynaColor, INC. (HEADQUARTERS)

🏠 No. 116, Jou Tz Street, Neihu, Taipei 114, Taiwan
☎ +886-2-2659-8898 📠 +886-2-2659-8868 ✉ info@dynacolor.com.tw 🌐 http://www.dynacolor.com.tw