

# DynaHawk™ ZM Series

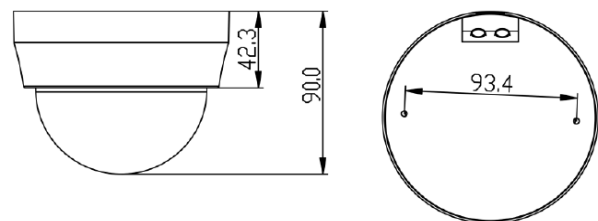
## Ultra High Definition Mini Dome Camera



The Ultra High Definition Multiple Streams Mini Dome IP Camera is an easy setup camera with PoE supported to reduce complicate cabling without sacrificing performance. Quad Streams Compression (H.264 Baseline / Main / High Profile / SVC + MJPEG) are supported for efficient bandwidth and storage management. Up to 4k2k real time resolution is offered for providing high definition images. Also, the H.264 encoder performance can up to 1080p 60 fps. For dark environments, the camera has incorporated WDR, 3DNR and Day/Night ICR technologies to capture clear images in lowlight conditions.

### ■ Key Features

- Sony Progressive Scan CMOS Sensor 8M / 6M / 4M / 3M Resolution
- Multi-exposure HDR (Multi-exposure Sensors is required)\*
- Low Latency Streaming
- Low Power Consumption on Encoding
- Quad codec support (H.264 Baseline / Main Profile / High Profile / SVC + MJPEG)
- Quad Streams Support
- Tampering Alarm
- Motion Detection
- Text Overlay and Privacy Masks
- 3D Motion Compensated Noise Reduction (MCTF)
- Network Failure Detection
- True Day/Night Function (ICR)
- IR LED Module support (working distance up to 40m) \*
- Weatherproof (IP66 International)\*
- 64GB micro SD Card support
- ONVIF Profile S Support



# DynaHawk™ ZM Series - Mini Dome IP Camera

Camera		Z4SA-M	Z4SF-M
Image Sensor		1/1.8" Sony Progressive CMOS	1/1.7" Sony Progressive CMOS
Effective Pixels		6M	12M
Minimum Illumination	Color B/W		TBD TBD
Shutter Speed		1 ~ 1/10000 sec.	
Lens			
Lens		Motorized	Motorized
Focal Length		4-8 mm	3.3-8 mm
F Number		F1.6	F1.5
FOV		TBD	TBD
Operation			
Multiple Languages		English / French / German / Italian / Japanese / Korean / Portuguese / Russian / Simplified Chinese / Spanish / Traditional Chinese	
Image Setting	Iris Control*	DC Iris / P-iris	
	Backlight Compensation	On/Off	
	White Balance	Auto / Manual / ATW / Indoor / Outdoor	
	Noise Reduction 3D	Low / Middle / High / Off (w/ Motion Compensation)	
	Wide Dynamic Range	Gamma WDR On / Off	
	Privacy Mask	On/Off	
	Brightness	Manual	
	Exposure	Auto / Manual	
	Sharpness	Manual	
	Contrast	Manual	
	Saturation	Manual	
	Hue	Manual	
	Digital Zoom	Support	
	Motion Detection	On / Off / By Schedule	
	Privacy Mask Type	Color	
	ICR	Auto / On / Off / Smart	
	ICR + IR LED*	Auto / LED On / LED Off / Smart IR / Light Sensor	
	Tampering Alarm	On / Off / By Schedule	
Audio	Two-way Audio	Line in / Line Out	
	Compression	G.711/G.726	
Network			
Interface		RJ-45, 1Gbps Ethernet	
Video Compression		MJPEG / H.264 (MPEG-4 Part 10/AVC) Baseline / Main Profile / High Profile / SVC	
Video Streaming	Single stream	H.264 6M (3072x2048) @25/30 fps	H.264 4K2K (3840x2160) @25/30fps
	Dual Streams	H.264 6M (3072x2048) @25/30 fps + H.264 720P @25/30fps Note: 1 of the streamings can be MJPEG	H.264 1080P @50/60 fps + H.264 1080P @25/30 fps Note: 1 of the streamings can be MJPEG
	Quad Streams	H.264 1080P @50/60 fps + H.264 SXGA @25/30 fps + H.264 720P @25/30 fps + H.264 D1 @25/30 fps Note: 1 of the streamings can be MJPEG	
Video Resolution	H.264	6M (3072 x 2048) / Full HD 1080P / SXGA / HD / 720P / XGA / SVGA / D1 / VGA / 4K2K (3840 x 2160) / Full HD 1080P / SXGA / 720P / XGA / SVGA / D1 / VGA / CIF / QVGA	
	MJPEG	Full HD 1080P / SXGA / 720P / XGA / SVGA / D1 / VGA / CIF / QVGA	
Protocol		IPv4/v6, TCP/IP, UDP, RTP, RTSP, HTTP, HTTPS, ICMP, FTP, SMTP, DHCP, PPPoE, UPnP, IGMP, SNMP, QoS, ONVIF	
Security		HTTPS / IP Filter / IEEE 802.1X	
Alarm	Input	1 Set 5V 10kΩ pull up	
	Output	1 Set Photo Relay Output 300V DC/AC	
Event Notification		HTTP / FTP / SMTP	
Micro SD		microSDHC 32GB support	
Supported Web Browser		Internet Explorer (6.0+) / Chrome / Firefox / Safari	
User Account		20	
Password Levels		User and Administrator	
Mechanical			
Built-in IR Illuminator*	Working Distance	up to 40 m	
	Wavelength	850 nm	
	Number of LEDs	6	
LED Indicator		Power / Link / ACT	
Connectors	Type	Indoor	
	Alarm	4 of 8 Pin Terminal Block (Female)	
	Power	3 Pin Terminal Block (Female)	
	Ethernet	RJ-45	
	Analog Video	1.0 Vp-p / 75 Ω / BNC cable*	
	Audio*	4 of 8 Pin Terminal Block (Female)	
General			
Operating Temperature		-10°C ~ 50°C (14° ~ 122°F)	
Humidity		10% ~ 90%, No Condensation	
Weatherproof Standard*		IP66	
Dimension		Ø 117 x 90 mm (Ø 4.6 x 3.6 in.)	
Weight		280g	
Power Source		DC 12V / AC 24V / PoE	
Power Consumption		TBD	
Regulatory		CE / FCC	

\* mark for optional items

Product specification and availability are subject to change without notice.