

DynaHawk™ WM Series

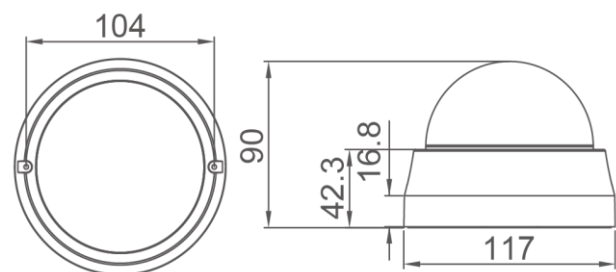
Full HD Multiple Streams Mini Dome Camera



The Full HD Multiple Streams Mini Dome IP Camera is an easy setup camera with PoE supported to reduce complicate cabling. Up to 3 Megapixel Resolution is offered for providing high definition images. Quad Streams Compression (H.264 Baseline / Main / High Profile + MJPEG) are supported for efficient bandwidth and storage management. For dark environments, the camera has incorporated WDR, 3DNR and Day/Night ICR technologies to capture clear images in lowlight conditions.

Key Features

- Sony Progressive Scan CMOS 3M Sensor
- Quad Streams Support
- Dual Streams- Full HD 1080P Real-time + D1 Real-time
- Quad Stream Compression- H.264 Baseline / Main / High Profile + MJPEG
- Multi-language Support
- Tampering Alarm
- Wide Dynamic Range
- Motion Detection
- Privacy Masks
- Smart Picture Quality / 3D Noise Reduction
- Network Failure Detection
- True Day/Night (ICR)
- IR LED Module (working distance up to 25 m)*
- Weatherproof (IP66 International)*
- microSD Support
- ONVIF Support



DynaHawk™ WM Series - Mini Dome IP Camera

Camera		W3S1-M	
Image Sensor		1/2.8" Sony Progressive CMOS	
Effective Pixels		2048(H) x 1536(V)	
Minimum Illumination		0.2 lux (Color) / 0.02 lux (B/W)	
Shutter Speed		1 ~ 1/10000 sec.	
Lens			
Lens		3x Optical Zoom, Auto Focus / Motorized / Vari-focal Lens	
Focal Length		3X AF - 3~9 mm Motorized / Vari-focal 3~10.5 mm	
F Number		3X AF - F 1.2 Motorized / Vari-focal 3~10.5 mm - F1.4	
FOV		3X AF - 99.7° (Wide) Motorized / Vari-focal 3~10.5 mm - 95° (Wide)	
Operation			
Multiple Languages		English / French / German / Italian / Korean / Simplified Chinese / Traditional Chinese / Russian / Portuguese / Spanish / Japanese	
Image Setting	Iris Control*	Vari-focal / Motorized - DC-Iris 3X AF - P-Iris / DC-Iris	
	Backlight Compensation	On / Off	
	White Balance	Auto / Manual / ATW / One Push	
	Noise Reduction	3D On / Off	
	Wide Dynamic Range	On / Off	
	Privacy Mask	On / Off	
	Brightness	Manual	
	Exposure	Auto / Manual	
	Sharpness	Manual	
	Contrast	Manual	
	Saturation	Manual	
	Hue	Manual	
	Digital Zoom	Support	
	Motion Detection	On / Off / By Schedule	
	Privacy Mask Type	Color	
Audio*	ICR	Auto / On / Off / Smart	
	ICR + IR LED*	Auto / LED On / LED Off / Smart IR / Light Sensor	
	Tampering Alarm	On / Off / By Schedule	
	Two-way Audio	Line in / Line out	
	Compression	G.711 / G.726	
Network			
Interface		RJ-45 10/100Mbps	
Video Compression		H.264 (MPEG-4 Part 10/AVC) / MJPEG	
Video Streaming		Dual Streams H.264 + H.264 / H.264 + MJPEG Quad Streams H.264 x 4 / H.264 x 3 + MJPEG	
Video Resolution		H.264- 2048 x 1536 (3M) / Full HD 1080P / SXGA / HD 720P / XGA / SVGA / D1 / VGA / CIF MJPEG- Full HD 1080P / SXGA / HD 720P / XGA / SVGA / D1 / VGA / CIF	
Frame Rate		Dual Streams : 1080p (30/25 fps) + D1 (30/25 fps)	
Protocol		ARP, IPv4/v6, TCP/IP, UDP, RTP, RTSP, HTTP, HTTPS, ICMP, FTP, SMTP, DHCP, PPPoE, UPnP, IGMP, SNMP, QoS, ONVIF	
Security/Authorization		HTTPS / IP Filter / IEEE 802.1X	
Alarm*	Input	1 Set 5V 10kΩ pull up	
	Output	1 Set Photo Relay Output 300V DC/AC	
Event Notification		HTTP / FTP / SMTP	
Micro SD		microSDHC 32GB support	
Supported Web Browser		Internet Explorer (6.0+) / Chrome / Firefox / Safari	
User Account		20	
Password Levels		User and Administrator	
Mechanical			
Built-in IR Illuminator*	Working Distance	Up to 25m	
	Wavelength	850 nm	
	Number of LEDs	24	
LED indicator		Power / Link / ACT	
Connectors	Type	Indoor	Outdoor
	Alarm	4 of 8 Pin Terminal Block (Female)*	N/A
	Power	3 Pin Terminal Block (Female)	N/A
	Ethernet	RJ-45	RJ-45
	Analog Video	1.0 Vp-p / 75 Ω / BNC cable* (Installation purpose)	N/A
	Audio	4 of 8 Pin Terminal Block (Female)*	N/A
General			
Operating Temperature		-10°C ~ 50°C (14° ~ 122° F)	
Humidity		10% ~ 90%, No Condensation	
Weatherproof Standard*		IP66	
Dimension		Ø 117 x 90 mm (Ø 4.6 x 3.6 in.)	
Weight		280 g	
Power Source		PoE / DC 12V / AC 24 V	
Power Consumption		System: 3.8 W (Built-in IR Illuminator: +1.5W, 3X Zoom Lens: +4W, Motorized Lens: +1.8W)	
Regulatory		FCC / EMC / LVD / RoHS	

* mark for optional items

Product specification and availability are subject to change without notice.



DYNACOLOR, INC.

No. 116, Jou Tz Street, Neihu, Taipei 114, Taiwan

TEL: (886)2-2659-8898

FAX: (886)2-2659-8868

http://www.dynacolor.com.tw

info@dynacolor.com.tw