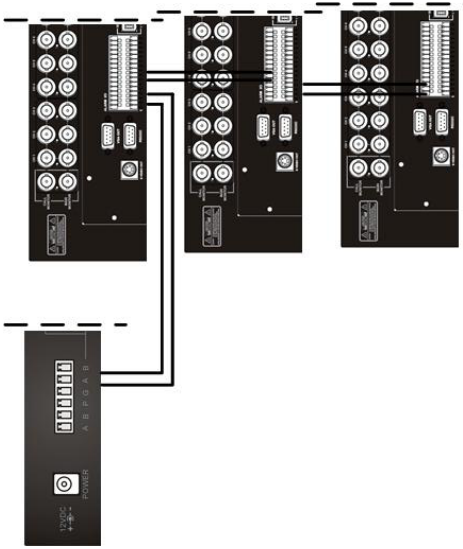


# 7323-2 Setup Guide

## ● System Diagram

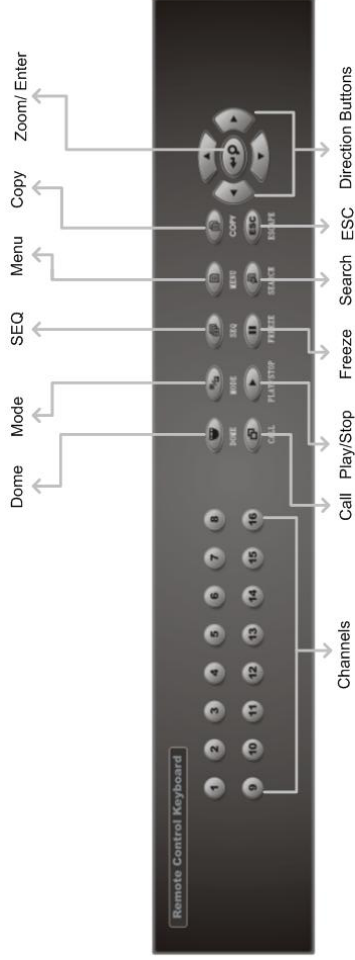
Before using the unit (7323-2), make sure connect the unit and the DVR correctly. There is a system diagram below to show you how to connect your device.



If you turn on the power (with adaptor) or connect 7323-2 with RS485 cable, the keyboard (7323-2) will automatically search DVRs that connect with 7323-2 by RS485 cable. The channel LED will be lighted one by one during search period. The action will be continued until 7323-2 has received any response from any DVR. The channel LED corresponds to the responsive DVR will be flashed.

## ● Function Keys

The function keys on the front panel are described below for normal operation.



## ● Rear Panel Connections



## ● ID Select

If you want to control any particular DVR, press the channel key correspond to the particular DVR over 1.5 second. When this channel LED flashed, it means that the communication was established between 7323-2 and DVR.

The channel key corresponds to DVR RS485\_ID

CH_Key	1	2	3	4	5	6	7	8
RS485_ID	224	225	226	227	228	229	230	231
CH_Key	9	10	11	12	13	14	15	16
RS485_ID	232	233	234	235	236	237	238	239

## ● Connect Pin Assignment



Pin No.	Definition	Pin No.	Definition
A	RS485 DA	G	Ground
B	RS485 DB	A	RS485 DA
P	12VDC in	B	RS485 DB

## ● Specification And Connectors

Specification	
Power Input	12 Volt DC ( ±15% )
Power Consumption	0.5 Watt
Environment	0° C~50° C
Humidity	Less than 90%
Dimension	390 (W) x 88 (D) x 45 (H) mm
Connector	
Power	DC Jack
Remote I/O	Terminal Block
Cable	
RS485 ID	RS485 one to one, 1000 meter maximum
RS485 ID	Default is 254 (Fixed)